

2024|2025 Prospectus



Central
Coast
Council

Central Coast Regional
Sporting & Recreation
Complex

Index

Message from the Chief Executive Officer, Central Coast Council	3
Message from the Administrator, Central Coast Council	3
Where is the Central Coast Regional Sporting & Recreation Complex	4
Interesting facts about the Central Coast	8
People of the Central Coast	9
Illustrative site plan of the complex	10
Technical specifications	12
Event guidelines	14
Amenities	15
Sports and event equipment	16
Funding	18
Testimonials	19
Contact details	Back

From the CEO

It's been another highly successful year for the Central Coast Regional Sporting and Recreation Complex (CCRSRC) at Tuggerah.

Throughout the 2022-23 Financial Year we welcomed 111,517 visitors to the venue boosting overall numbers (participants and spectators) to more than 280,000 since opening in 2019.

What consistently impresses about this facility is its adaptiveness and flexibility to cater for a wide range of sports at a community and representative level. These include Cricket, Oztag, Rugby League, Rugby Union, Soccer, Touch Football, Australian Football (AFL) and Cross Country.

Key reasons the CCRSRC is so popular among the various sporting codes is that it is ideally located just off the M1 mid-way between Sydney and Newcastle within easy reach of different types of accommodation and all the attractions of our coastal lifestyle.

We can't rest on our laurels and are determined to continue upgrading the facility, so it remains truly world class. Recent upgrades have included fencing, shading and seating as well as a complete restoration of the main field that includes floodlighting to greater than 300 lux.

In 2023 our highly professional staff got an international lesson in how to prepare grass in a different way, working with experts from FIFA to prepare the pitch for the German international women's team.

I invite anyone interested in discovering what this state-of-the-art facility can do for your sporting, leisure or recreational events to contact our Management Team for more information – their details are on the back of this prospectus.



David Farmer

Chief Executive Officer
Central Coast Council

From the Administrator

From its inception the goal of Central Coast Regional Sporting and Recreation Complex (CCRSRC) was to become a premier multi-sport facility capable of hosting everything from community events through to world class athletes and teams.

I'm proud to say we continued to make great strides in this regard with several milestones being achieved recently.

Since opening in 2019 we've hosted 336 events equating to 816 event days and generating an estimated \$25 million in economic stimulus for the local economy. Those numbers would have been higher but for the intervention of COVID.

A true highlight was hosting the German Women's football team for the FIFA Women's World Cup Australia and New Zealand 2023 ©. This was a long tender process involving three years of work and international co-operation to convince them we had the facility to meet their needs.

Reports from Zurich, FIFA headquarters, and Germany itself were glowing, particularly of the efforts to create an international pitch. I would like to congratulate Council staff for delivering both on and off the field.

In 2023 we also hosted the Koori Knockout for a second time, after delivering it in 2019. This is the largest Indigenous sporting event in NSW, attracting thousands for a weekend of spectacular rugby league.

We will continue to tender for events ensuring everyone can enjoy the beautiful Central Coast and all it has to offer whether they win, lose or draw.

Find out more about our amazing facility by talking to our Management Team – their details are on the back of this prospectus.



Rik Hart

Administrator
Central Coast Council

Where is the Central Coast Regional Sporting & Recreation Complex?

The Central Coast region of New South Wales is known for its magnificent national parks, extensive waterways and golden sandy beaches. Tuggerah sits alongside one of three major interconnected coastal lagoons, Tuggerah Lakes.

The Regional Complex is very accessible not only by car but by train as well, being only 400m from Tuggerah Station.

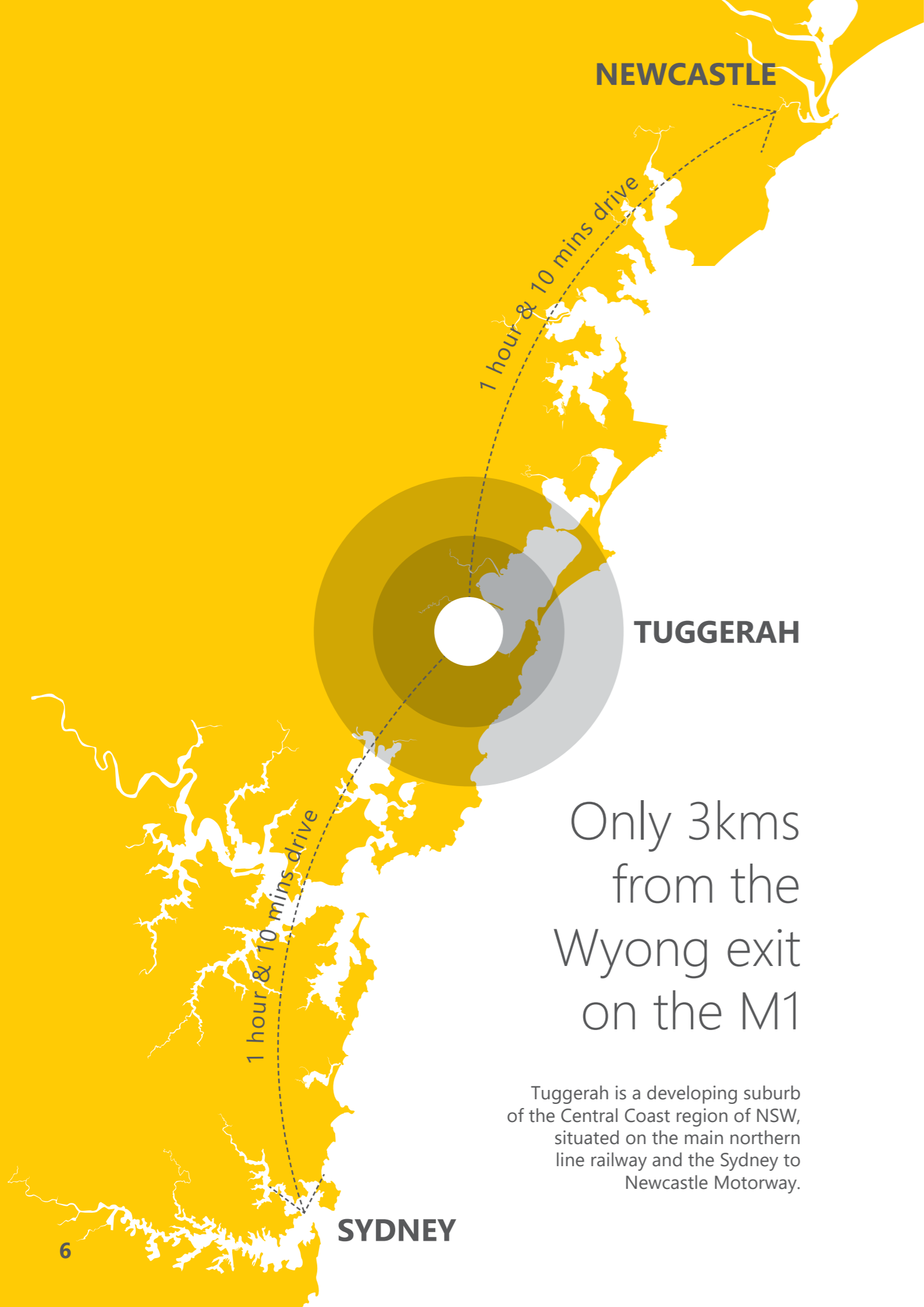
The complex has 448 parking bays on site, including 24 accessible parking bays. Additional parking is also available within walking distance from the complex with close proximity to the train station as well as major shopping centres within the precinct.

The Entrance

EDSACC

Mingara

Central Coast Regional Sporting & Recreation Complex



NEWCASTLE

1 hour & 10 mins drive

TUGGERAH

Only 3kms
from the
Wyong exit
on the M1

Tuggerah is a developing suburb
of the Central Coast region of NSW,
situated on the main northern
line railway and the Sydney to
Newcastle Motorway.

SYDNEY

1 hour & 10 mins drive



Interesting facts about the Central Coast

The Central Coast is a beautiful, thriving and vibrant area with an array of coastal waterways and bushland, as well as a diverse range of restaurants and eateries, with everything at your fingertips.

Weather

- Weather is humid subtropical: hot and humid summers and mild to chilly winters.
- Average 22 degrees in Summer and 15 degrees in Winter.
- Rainfall is spread fairly evenly throughout the year, but is slightly less frequent in Winter and Autumn.
- Average annual rainfall ranges from 1200–1600mm near the coast to between 800–1200mm further inland.

Main attractions

- Beaches and coastline
- Bushland, walking tracks and lookouts
- Soft adventure activities
- Laid back lifestyle
- Friendly community

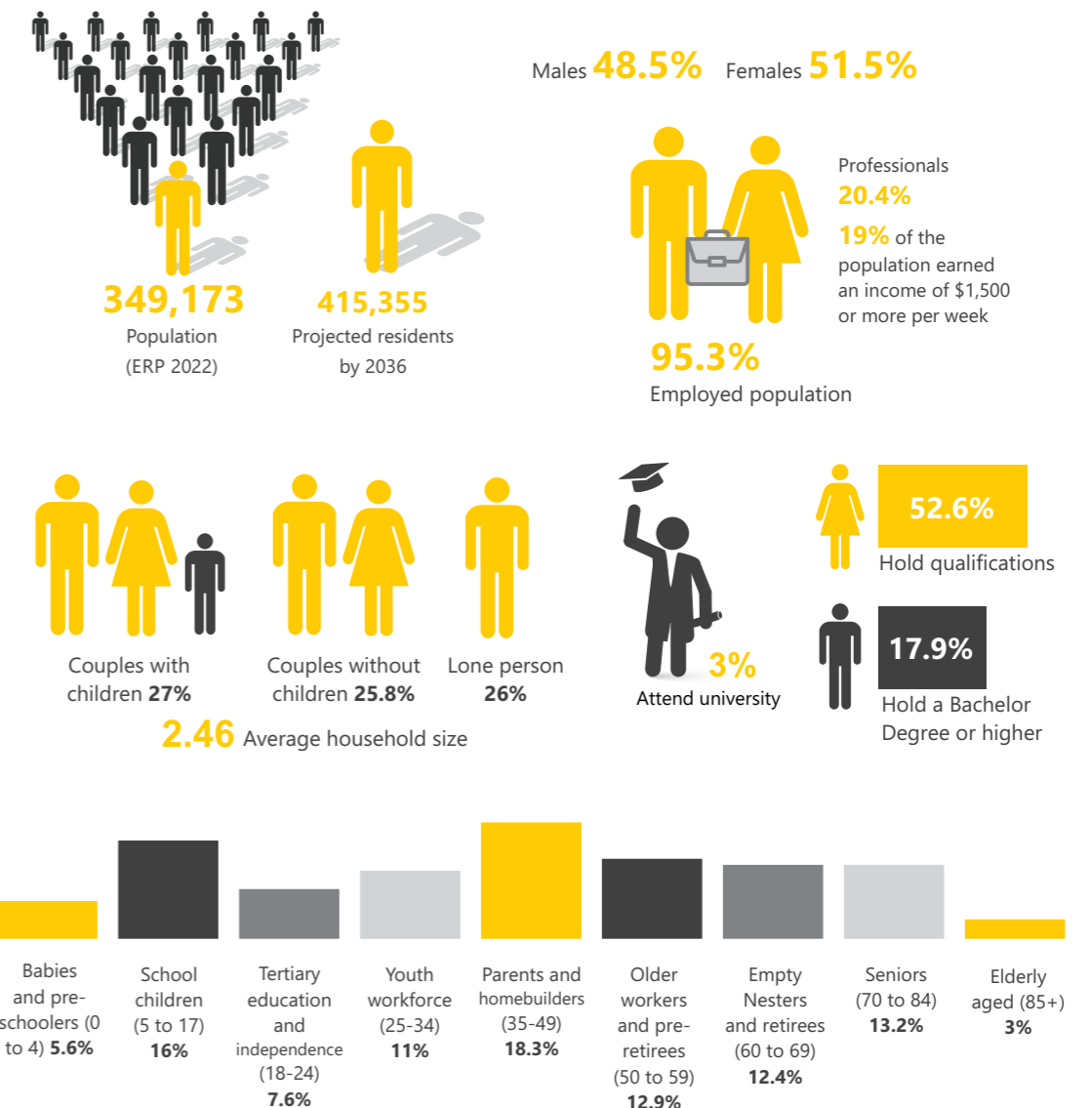


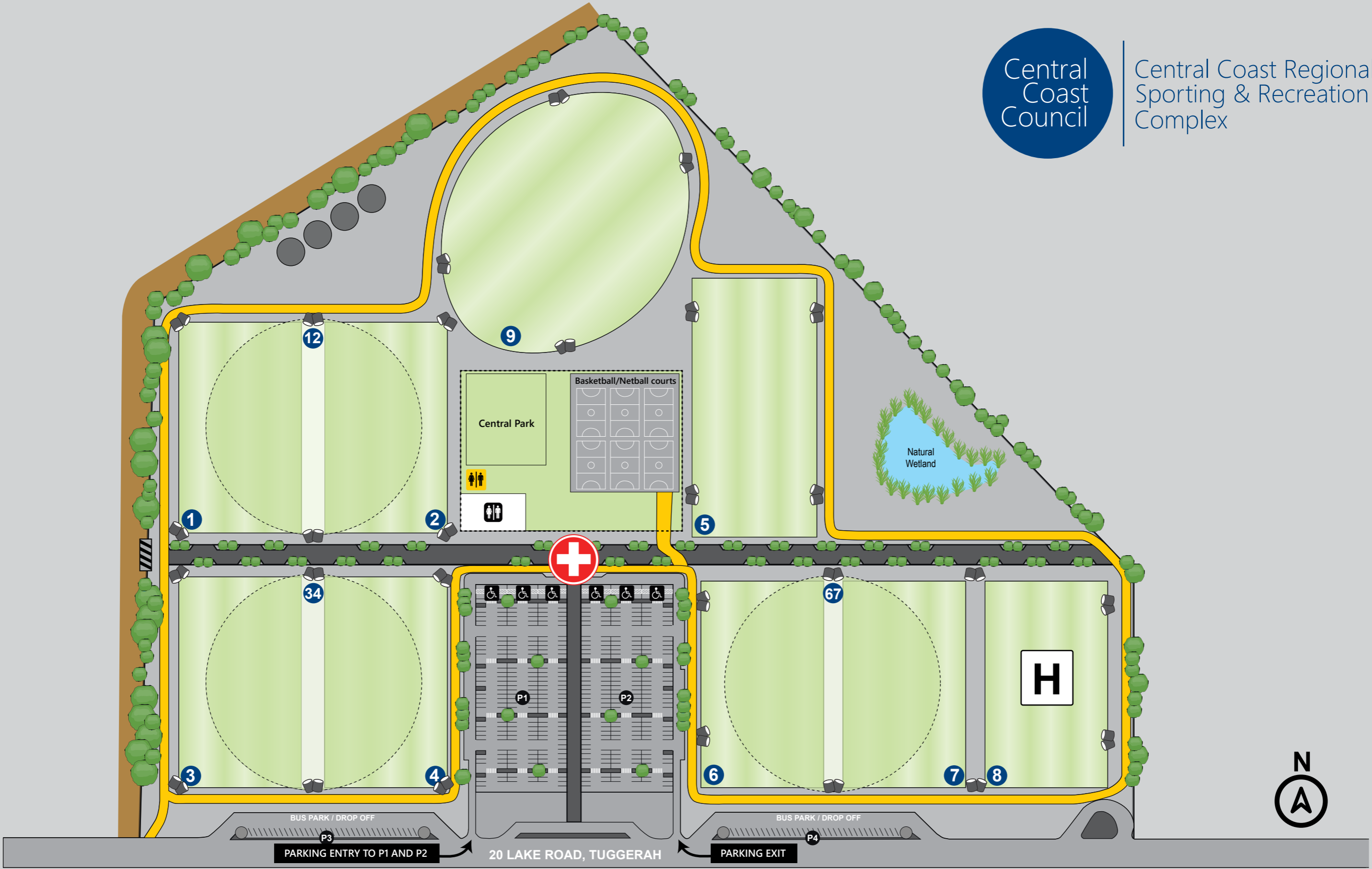
People of the Central Coast

Those living on the Central Coast have an incredible sense of community; they are passionate, friendly, welcoming and proud of where they come from.

Population

- 3rd most populated region in NSW
- 9th largest region in Australia
- 349,173 people living in the Central Coast (id population and household forecast 2022)
- 5.5 million people living within a two hour travel distance





To Bryant Drive
 To Tuggerah Station (400m)

Map Legend

- Sports Field ID
- Water Storage Units
- Service Road
- Parking Bays
- Floodlights
- Main Boulevard (560m x 10m)
- Service Gate
- Public Parking
- Amenities
- Shared Pathway (2,020m)
- Helipad
- Ambulance / Emergency Vehicles
- Temporary Toilets

Central Coast Regional Sporting & Recreation Complex

Technical specifications

Oval sports fields

AFL

Field numbers : **12 and 34** (combining 1&2 and 3&4)

151m x 112m with a minimum 4m run off area

Field number : **67** (combining 6&7)

151m x 110m with a minimum 4m run off area

Orientation for these fields is 75° east of north

Field number : **9** (main field)

159m x 127m with a minimum 4m run off area

Orientation for main field is 44° east of north

Cricket

Field numbers : **12 and 34** (combining 1&2 and 3&4)

Pitch 25m x 6m – Outfield 60m x 72m (measured from centre of wicket table)

Field number : **67** (combining 6&7)

Pitch 25m x 6m – Outfield 56m x 72m (measured from centre of wicket table)

Orientation for above fields is 7° east of north

Field number : **9** (main field)

Pitch 25m x 15m – Outfield 57.5m x 79.5m (measured from centre of outside pitch)

Orientation for main field is 44° east of north

All fields have a minimum 4m run off area

Fields 12, 34 and 67 are clear of rectangular playing fields

Floodlights

All fields have 100 lux lighting levels, except for Field 5 which has 300+ lux levels.

Rectangular sports fields

Soccer

Field numbers : **1 to 8 inclusive**

105m x 68m with a min. 4m run off area

Orientation for all fields is 7° east of north

Rugby

League or Union

Field numbers : **1 to 4 inclusive**

100m x 68m with an in-goal area of 8.7m from try line to dead ball line

Field number : **5**

100m x 70m with an in-goal area of 22m from try line to dead ball line

Field numbers : **6 to 7 inclusive**

100m x 68m with an in-goal area of 8m from try line to dead ball line

All fields have a minimum 4m run off area

Goal post width 5.7m

Orientation for all fields is 7° east of north

Turf species and drainage

The turf species used on Field 5 is Cynodon Dactylon – Santa Ana.

All other fields are Cynodon Dactylon - 'Legend' Couch incl. cricket wickets.

All fields, except for Field 5, are constructed on a **soil** based profile – 'sand slitted' with subsurface drainage. Field 5 has been designed as a **sand** based field with subsurface drainage and a perched water table – allowing for faster drainage.

Event guidelines

Booking an event

A comprehensive guideline to holding events at the Complex can be downloaded from Council's website (refer to Contacts on back page). These guidelines provide advice regarding the application process, statutory requirements and other Council provisions. We are also available to guide you through the process.

Site inspections

If you have never been, we look forward to welcoming you to the Complex. Please give us at least two week's notice to confirm a suitable date and time.

Application process

Once you have familiarised yourself with the Event Guidelines and have determined which areas / sports fields you would like to book for your event, you will be able to download the Event Application form from the website (refer to Contacts on back page). You are also encouraged to call our officer to determine availability of the areas you require before submitting your application form for processing.

Once your application has been approved in principle, you will be required to submit your Risk Management Plan and Environmental Risk Assessment. Easy to follow templates are available to assist you. We also have blue-print Traffic Management Plans from which you can draft your Traffic Control Plan (if required).

Fees and charges

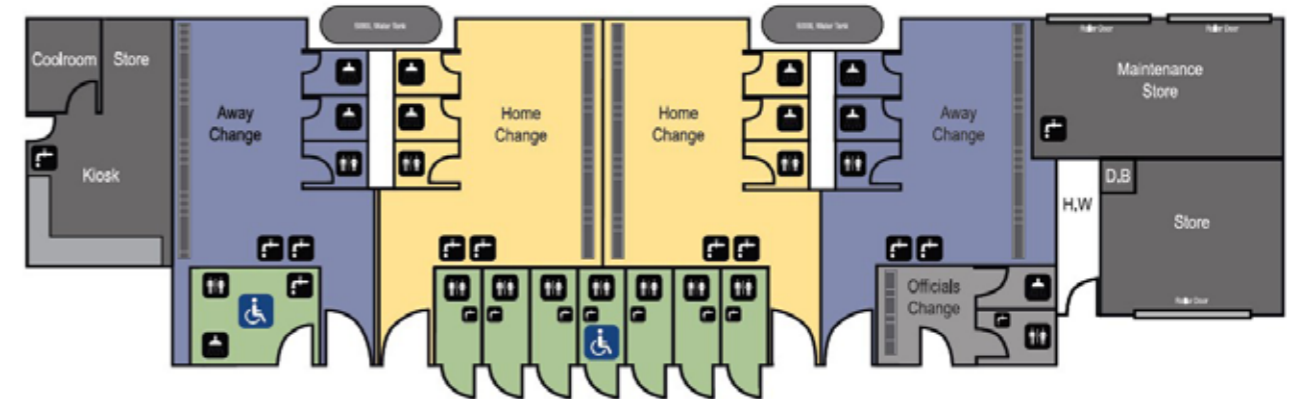
Upon receipt of your application, a Cost Estimate will be prepared for your consideration before finalising the hiring agreement. Fees and charges are adopted by Council and reviewed annually.

Safety, security and services

Our Event Guidelines (available on the website) can provide you with all the information needed to deliver a successful event. From food and beverages, to waste management, this comprehensive document will advise and direct you. If you can't find the answers you are looking for, our office is happy to take your call.



Amenities



Map Legend

- | | | |
|--------------------|---------------------|-------------------|
| Amenities | Aluminium Bench | Home Change Rooms |
| Ambulant Amenities | Water Storage Units | Away Change Rooms |
| Showers | Basins | Public Amenities |



Amenities block (built)

- Two home & away dressing sheds with internal showers and toilets
- Seven public toilets with one ambulant toilet
- One fully accessible change room including shower
- One officials change room with internal shower and toilet
- Kiosk with cold room and storage

Amenities block (stalls)

- Two blocks consisting of 14 stalls each
- Each block is interchangeable M/F





Sports equipment

- 8 pairs soccer goal posts (7.32 x 2.44m)
- 8 pairs soccer box nets (for above)
- 4 sets of 8 AFL goal posts (12m / 8m)
- 7 pairs rugby goal posts (12m)

Additional equipment

We have a range of equipment (on site and at no hire charge) to assist you with the delivery of your event.

- Mobile electronic scoreboard (can be set up for almost all sporting codes)
- Public Address System (covers the complex or can be isolated to certain areas)
- Mobile grandstands (20 units seating 50 each)
- Crowd control barriers (195 units / 2.26m x 1.10m = Approx. 420 running meters)
- Field 5 (premier field) has a white picket fence installed around it.

Funding

Grants and sponsorships are available to help with your next event

Major Events are a key component of the visitor economy and Central Coast Council is committed to developing and attracting sporting and entertainment events to the Central Coast.

There are many grants and sponsorships available for event organisers to help fund your next event.

For more information visit
centralcoast.nsw.gov.au/funding



Testimonials

"We, the German Women's National Team, had the privilege of utilizing the Central Coast Regional Sporting & Recreation Complex during our participation in the FIFA Women's World Cup 2023. The facility proved to be an outstanding venue for our daily training sessions. We would like to particularly emphasize that the condition of the playing field was excellent. The care and maintenance of the turf contributed to an optimal training environment, which was crucial for our team. We were 100% satisfied and would return without hesitation."

German Women's National Team - FIFA Women's World Cup 2023
Valentin Rudolph
Team Manager Women's National Team



"The Central Coast Regional Sporting & Recreation Complex is an amazing facility that has allowed our squad to train on a stadium quality pitch as needed to give our team the best possible preparation heading into A-League competition matches. The complex has also allowed our Academy Mens, Womens and youth teams to train and play pre-season games on a great surface, as well as host tournament style pre-season competitions."

Darren Dobson
A-League Men Team Manager
Central Coast Mariners FC



"Playing in my first NSW Koori Knockout was amazing - and to be playing at Tuggerah was even better. The facility has a great set up for big carnivals like this and there was such a fun vibe about the place."

Olivia Kernick
Current NRLW And Australian Women's Rugby League representative player and 2023 Daly M winner.



Contacts

Karen Lightfoot

Regional Sports Activation Officer

T: +61 (02) 4350 5352

M: +61 (04) 3619 2120

E: Karen.Lightfoot@centralcoast.nsw.gov.au

E: CCRSRC@centralcoast.nsw.gov.au

Central Coast Regional

Sporting & Recreation Complex

20 Lake Road, Tuggerah NSW 2259

[centralcoast.nsw.gov.au/
regionalssportingcomplex](http://centralcoast.nsw.gov.au/regionalssportingcomplex)



Central
Coast
Council