

# Central Coast Council Heritage Study Review 2020

VOLUME 3: CULTURAL HERITAGE LANDSCAPE FRAMEWORK

Carolyn Tallents Landscape Architect

David Scobie Architects with Comber Consultants, Carolyn Tallents and Dr. Terry Kass

## Issue register

| Date of Issue          | Reason for Issue | Prepared by | Signed                  |
|------------------------|------------------|-------------|-------------------------|
| Issue A – August 2020  | Draft            | C Tallents  |                         |
| Issue A1 – August 2020 | Draft 2          | C Tallents  |                         |
| Issue B                | Draft 3          | C Tallents  |                         |
| Issue C- October 20    |                  | C Tallents  | <i>Carolyn Tallents</i> |

Photos on front cover courtesy of Central Coast Council except colour shot - NSW Rural Fire Service



David Scobie

Heritage Consultant for DSA Pty Ltd

Contact: David Scobie Tel. (02) 9967 2426 and Mobile 0412 415 010 and email: scobuiearchitect@gmail.com

Consultants to Central Coast Council for the Heritage study Review 2020



## Contents

|          |  |           |
|----------|--|-----------|
| <b>1</b> | <b>Introduction .....</b>                                  | <b>4</b>  |
| 1.1      | Cultural landscapes .....                                  | 4         |
| 1.2      | Why establish a cultural landscape approach? .....         | 5         |
| 1.3      | Key objectives and outcomes .....                          | 6         |
| <b>2</b> | <b>Draft Methodology .....</b>                             | <b>6</b>  |
| 2.1      | Settlement patterns and land use .....                     | 9         |
| 2.2      | The landscape.....   | 10        |
| 2.2.1    | River Landscapes .....                                     | 17        |
| 2.2.2    | Plateau Lands .....  | 17        |
| 2.2.3    | The Valleys.....   | 18        |
| 2.2.4    | The Lakes.....   | 19        |
| 2.2.5    | Brisbane Water.....  | 20        |
| 2.2.6    | Coast, Escarpments and Beaches.....                        | 22        |
| 2.2.7    | Hinterlands .....  | 23        |
| 2.2.8    | Freeway interface and Central Lands .....                  | 23        |
| 2.2.9    | Townships and Development Corridor- Gosford to Wyong ..... | 24        |
| 2.3      | Details of the cultural landscape assessment .....         | 25        |
| 2.4      | Conservation Management Guidelines .....                   | 28        |
| <b>3</b> | <b>Case Study .....</b>                                    | <b>29</b> |
| <b>4</b> | <b>Conclusion .....</b>                                    | <b>29</b> |
| <b>5</b> | <b>References .....</b>                                    | <b>31</b> |
| <b>6</b> | <b>Appendices .....</b>                                    | <b>32</b> |
| 6.1      | Appendix 1 Case Study .....                                | 32        |

# 1 Introduction

This document is prepared in support of the Central Coast Council Comprehensive LEP Heritage Review by David Scobie Architects Pty Ltd and the following consultants:

|                  |  |
|------------------|--|
| Jillian Comber   | Aboriginal and Archaeology               |
| David Nutley     | Maritime history                         |
| Terry Kass       | Historian                                |
| Carolyn Tallents | Natural heritage and Cultural Landscapes |

David Scobie has assembled this team to address the Heritage Review and provide input in terms of their appropriate skills and experience.

The subject of this report is the landscape contribution to the Cultural Heritage Landscape Framework methodology. This document does not undertake the full Cultural Heritage Landscape Assessment for the Central Coast Local Government Area (LGA). In establishing a draft methodology it allows for the required components of the study to be outlined and provides advice towards the implementation of this full study.

Following the development of a methodology a nominated case study has been undertaken to test this methodology and framework for the future Cultural Landscape Assessment of the entire Central Coast. This testing may enable the methodology to be modified on the basis of the findings of the case study.

## 1.1 Cultural landscapes

Cultural landscapes, cultural heritage and cultural significance are sometimes terms that are interchangeable, however all of these terms contain the influence of human activity. The cultural landscape is defined as the landscape resulting from human activity and intervention over time. It includes the layers of human activity and values in the natural landscape. As an 'imprint of human history' these landscapes can tell us about achievements and values of our predecessors, from our First Peoples to non-Indigenous activities and settlement over time.

The Department of Environment, Climate Change and Water NSW (previously National Parks and Wildlife Service) in the **Cultural Landscapes – A practical guide for park management** defines the cultural landscape.

*The cultural landscape concept emphasises the landscape-scale history and the connectivity between people, places and heritage items. It recognises the present landscape is a product of long-term and complex relationships between people and the environment..... For the purposes of this guide, cultural landscape are defined as: "...those areas which clearly represent or reflect the patterns of settlement or use of the landscape over a long time, as well as the evolution of cultural values, norms and attitudes toward the land"*

The **Guidelines to the Burra Charter: Cultural Significance** (Australia ICOMOS Inc. 1988) describes cultural significance as

*aesthetic, historic, scientific or social value for past, present or future generations.*

These values as, described in the Burra Charter, can be summarised.

**Aesthetic value:** includes aspects of sensory perception including form, scale, colour, texture and material fabrics, smells and sounds.

**Historic value:** includes history of aesthetics, science and society and underlies all of these terms. Historic value *'has influenced, or been influenced by, an historic figure, event, phase or activity'*. If evidence of this association survives the historic value will be stronger.

**Scientific value:** the *'research value of a place will depend on the importance of the data involved, on its rarity, quality or representativeness and on the degree to which the place may contribute further substantial information.'*

**Social value:** *'Social value embraces the qualities for which a place has become a focus of spiritual, political, national or other cultural sentiment to a majority or minority group'*.

## 1.2 Why establish a cultural landscape approach?

The Cultural Landscape approach is a valuable method of looking at the landscapes and places of the Local Government Area (LGA) as it combines an appreciation of the natural landscape and their ecological values, with the cultural influences, those modified by human activity. It recognises that the landscape we see is a montage of different elements.

By understanding and reading the Cultural Landscape, the LGA can be recognised as a series of Cultural Landscape units or areas subdivided into manageable and comprehensive parcels. These parcels are multifaceted and complex, representing the landscape patterns and historical associations the landscape holds. They are not delineated purely by means of physical or visual criteria.

Through the recognition of these varied places, management principles and actions can be carried out with the knowledge of what needs to be protected, what areas may be capable of being modified and the best planning practices to respect/enhance the values of these places. This should inform the planning of the Central Coast and enable any proposed actions or future development to respect the values these places hold.

The identification of the varied Cultural Landscape areas resulting from the future full study will enable landscape conservation management initiatives to be developed. Further detailed analysis of particular landscapes will then be advantageous and necessary as part of the continuing land use planning process for the region.

The **Central Coast Regional Plan 2036**, NSW Department of Planning Industry and Environment, identifies the importance of the Cultural Landscapes. Direction 8 specifically provides reasons for recognition and Actions to be undertaken, providing strong reasons why these landscapes are of significance to future planning. The document states:

### ***'Direction 8 – Recognise the cultural landscape of the Central Coast***

*Cultural heritage is important to communities because it provides tangible connections to the past. Heritage items can also attract tourism which can contribute to local economies.*

*Aboriginal people have a strong connection to the landscape and the region is fortunate to have a rich Aboriginal heritage. Conserving this heritage and respecting the Aboriginal community's right to determine how it is identified and managed, will preserve some of the world's longest-standing spiritual, historical, social and educational values.*

*The region also has a rich non-Aboriginal heritage which includes numerous buildings and sites, including the World Heritage convict trail in the west of the region.*

*The landscape of the Central Coast creates an important cultural identity for its community, with the region's scenic amenity providing a dramatic backdrop and setting for development.*

*New development needs to respect the scenic values and character of different places. Well-located new development can create new communities that also have a strong sense of identity and place.*

*Heritage can add value to the character of a new development and should be considered in the planning process as a potential asset. It can give a development an added attraction or help establish a unique identity.*

### **Actions**

*8.1 Protect the Central Coast's scenic amenity by planning for development that respects the distinct qualities of different places.*

*8.2 Identify and protect heritage values to minimise the impact of urban growth and development, and to recognise its contribution to the character and landscape of the region.*

*8.3 Complete cultural landscape mapping and implement the findings through appropriate local planning controls.' (Central Coast Regional Plan 2036)*

## **1.3 Key objectives and outcomes**

The objectives and outcomes of undertaking a Cultural Landscape approach are:

- To assess the historic Cultural Landscapes of the LGA in order to gain an understanding of areas where the historic importance and cultural heritage value can be seen in the landscape today.
- To inform and enlighten us on aspects of our social history, and promote a sense of place.
- To include an understanding of the natural and cultural aspects of the landscapes to aid the planning process in the LGA.
- To identify that the landscape as we see it is a result of a complex combination of events, activities and influences over time.
- To assist in the protection of key Cultural Landscapes within the LGA, and to enable these to be recognisable in the future.
- To add to the layers of conservation and protection within the LEP going beyond individual items and places.
- To result in a legible set of areas, places, reserves and townscapes that have been researched, recorded and described.
- To outline management guidelines for the Key Cultural Landscapes.

## **2 Draft Methodology**

The methodology has been developed with particular reference to the type of landscapes and cultural heritage present with the Central Coast LGA. The contributing factors to the cultural landscapes to be assessed and recorded are described. The framework to assist in the cultural heritage landscape assessment is sequential and should relate to the overall heritage review. Four main sections should be covered

1. **Settlement patterns and land use** – Includes Aboriginal cultural heritage values and cultural landscapes – This includes the importance of the Aboriginal community connection to the land and the spiritual values that this holds. This assessment would embody the values identified through consultation with the Aboriginal community. It is expected that the types of cultural landscape items that may be

identified include but are not limited to: circulation routes and connections used by Aboriginal people in their movements over the land including between country, but also between sites; landforms and vegetation of significance – ridgelines, outcrops, significant trees or vegetation groups; views and sightlines – possible lookouts; shelters, middens and archaeological deposits; spatial distributions and topography associated with stories, songs, dances and traditional spiritual practice.

2. **The landscape** – includes:

**Natural landscapes** – natural features assessed through landform, vegetation, water form and

**Cultural landscapes** – looking at processes that have shaped the landscape.

3. **Cultural landscape identification, assessment and analysis**

Overall landscape patterns, spatial organisation of land use, vegetation patterns (tree groupings).

Building clusters, structures and other special features.

Circulation routes.

Historical associations including interpretive and associative value.

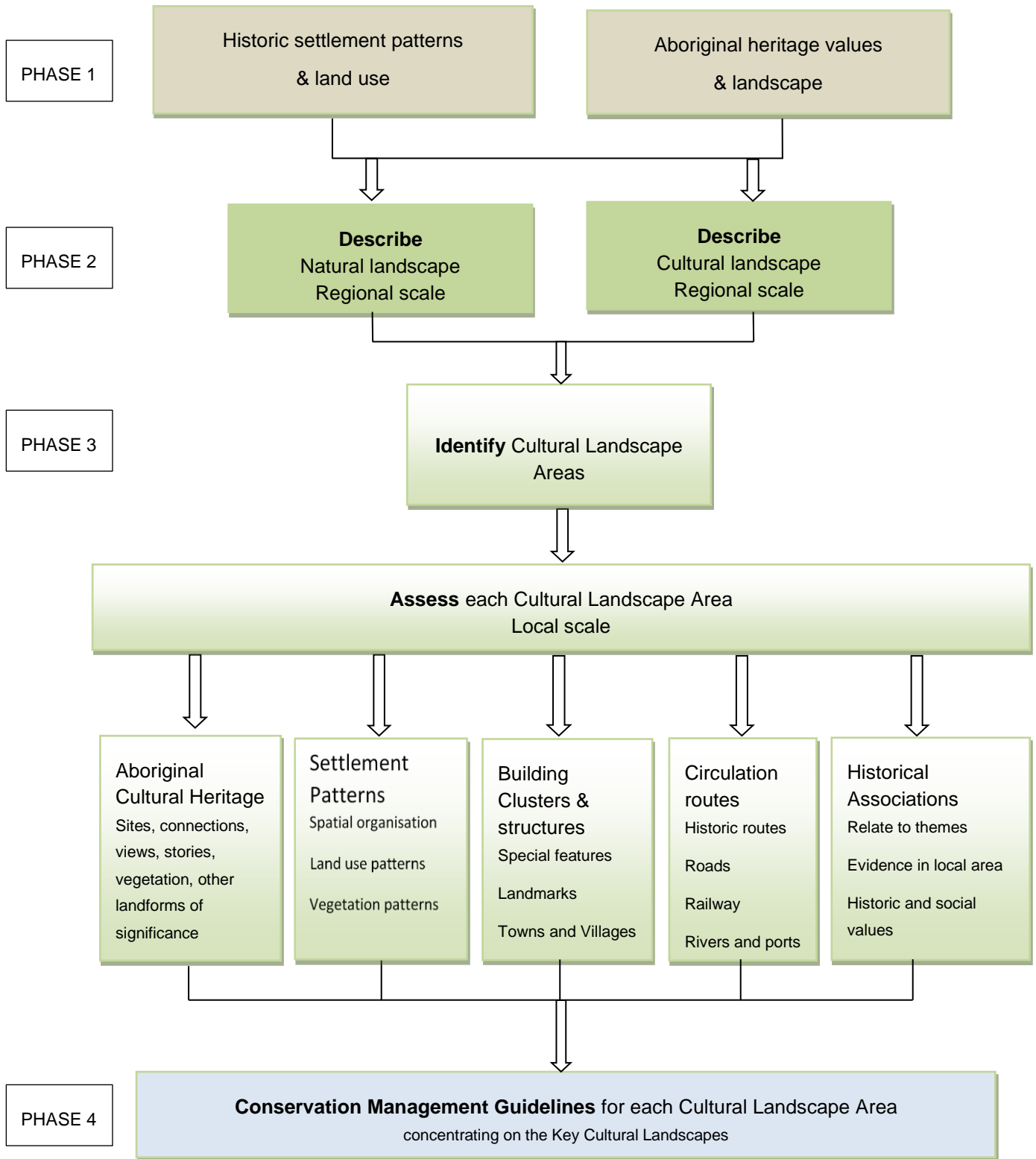
4. **Conservation management**

Once the cultural landscape assessment and analysis has been carried out the broad conservation management guidelines are outlined for each cultural landscape.

**Key towns and villages**

The overall Heritage review will include the towns and villages, particularly those identified in the State Heritage Inventory. These towns and villages are being reviewed by David Scobie and the study team. However during the analysis of the Cultural Landscape in phase 3 the assessment of building clusters and structures would also list the key towns and villages within the landscape. A list of the main villages within each Cultural Landscape is identified in section 2.2, concentrating on the rural villages and towns, as opposed to the areas within the urban development areas.

The following methodology will describe how this sequential process may be undertaken. A diagram of the process is shown in Figure 1.



**FIGURE 1 METHODOLOGY DIAGRAM**

## 2.1 Settlement patterns and land use

Settlement patterns are a way of understanding how the land was settled, and the progression of this settlement. These patterns are not always linked. Many patterns in the present day landscape were established, not only by the first inhabitants, being the Darkinjung and Guringai people, but also following this, with European occupation in the first half of the 19<sup>th</sup> Century, with some earlier than this. These include roads, tracks, clearing of trees, sites of towns and villages. The previous thematic histories of Gosford and Wyong provide a framework for understanding the present landscape, its making, meaning and the cultural values present to this day.

The first inhabitants of the region were the Darkinjung and Guringai people. (Kass, *Thematic History of the City of Gosford*, p15) Shell middens are evident around Kincumber, Patonga and Pearl Beach. The higher inland areas have rock shelters with ochred drawings, rock engravings and axe-grinding grooves. A number of geographical clans have been researched, divided amongst the rivers, beaches and valleys of the LGA. Occupation has been evidenced in Mangrove Creek mid-way along the sides of the hills over 7,000 years ago, and it is expected much longer than this period. The Darkinjung and Guringai people influenced the land on which they lived, with much more detailed study of the agricultural activities carried out by Aboriginal people in relatively recent times. The gathering of shells and middens is well known, along with fire, but the use of fire has been attributed to the promotion of plants to thrive that were good food sources, and not only to encourage grazing by kangaroos. The landscape can be seen to be a valuable resource and managed to increase favourable conditions. The grinding of seeds to make flour, the collection of berries, native fruits and use of the *Macrozamia* fruit in the leaner winter months ensured that the diet of fish was supplemented well by a broad range of the native plants present within the region.

In order to understand the significant areas within the LGA to Aboriginal people it is important to consult with the Aboriginal community. This would be part of the future Cultural Landscape study. This significance is expected to go beyond sites themselves to embody but not be limited to places, landforms of importance, view corridors and sight lines, linking elements, views connecting areas and symbolic places passed down through stories. This layer of significance is an important part of the cultural landscape assessment.

European settlement originally followed the rivers in search of good productive land for early settlers following the arrival of the First Fleet in 1788, however much of the land to the west was too rugged and provided little attraction. As these lands became populated and 'taken up' other areas were investigated. As settlement increased this often occurred in pockets, without links or connections to the earlier areas. This is evident when viewing some of the early land grant maps, where the earliest grants can be seen scattered around the LGA, or developing along river corridors or connections with the lakes and coastline. These are evident following up stream along the rivers, around the foreshore of Brisbane Water, the towns of Gosford and Wyong, and in some of the areas of potential richer farming along Narara and Erina Creeks (Kass, *Gosford Thematic History*, p17).

The nature of the farming also progressed from early subsistence production to support the early settler and their family, to cattle and agricultural activities such as orchards and crops to provide produce to the growing Sydney market.

The practices of clearing the land for settlement resulted in timber harvesting and timber mills in areas with the LGA.

By considering these settlement patterns, the later nature of settlement throughout the region and reading the way these have shaped the land, a greater understanding of the landscape can be understood along with evidence of this past and the relationship to the present.

Due to the scale of the Central Coast area and the vast differences in landscape types these settlement patterns are also varied.

Following the understanding of these patterns phase 2 can then be developed.

## 2.2 The landscape

### NATURAL LANDSCAPES of the Central Coast

The natural landscape is shaped by geological forces, erosion, ocean activity and the resultant vegetation. The landforms and topographic features are the result of millions of years of evolving landscape characteristics. This brief overview summarises the main natural features of the LGA on a regional scale. More detailed assessment on a local scale would occur during the cultural landscape assessment in phase 3, with identification of the local natural and cultural features of the landscape to be assessed within each cultural landscape area.

The geology, soils and resultant landforms are described broadly here in the way they have shaped the landscape and what we see today, rather than describing in detail each distinct geological formation.

The **western areas** of the LGA consist of **sandstone plateaus with steep escarpments**. The landscape is heavily dissected by creeks and rivers and much of the area remains densely forested. This character is also present along much of the **Hawkesbury River**, where **outcropping sandstone cliffs** drop steeply to the Hawkesbury River and the larger creeks are visible winding their way north, again dissecting the landscape. **Mangrove Creek, Mooney Mooney Creek and Mullet Creek** are natural features that have strongly shaped the landscape with development possible only on the flatter areas at the base of these steeply incised corridors.

Many of these areas are National Parks, with **Dharug** and **Popran National Park** in the west and **Brisbane Water National Park** in the south and east. The forested and rugged areas further north and west of the current M1 freeway include state forests, comprising **McPherson State Forest, Olney State Forest, Ourimbah State Forest** and **Jilliby State Forest**. **Brisbane Water National Park** extends north, tracing the path of Mooney Mooney Creek across the M1 as far as Peats Ridge and Central Mangrove.

The rugged vegetated areas extend in the south around Pearl Beach and Patonga and follow west along the Hawkesbury River and north to Kariong. This rugged landscape and rural land then dominates the areas west of the M1 for the remainder of the LGA. Patches of this steep and vegetated landscape can be found in the east of these areas in small areas and these will be described later. The line of change can be seen most dramatically along the eastern edge of the sandstone topped plateau between **Mt Penang** and **West Gosford**. The Gosford road cuts through this steep escarpment and the waterfalls, and rainforest pockets along this edge are clearly visible. This accounts for a very dramatic entry into Gosford.

These areas to the west consist of three broad landscape types. The first being the steeply undulating forest areas, discussed. These areas include two larger water bodies, **man-made waterbodies**, the Mangrove Creek Dam and the Mooney Mooney dam. These dams are totally enclosed by dense forest.

The second is the **plateau lands** through the centre, generally running in a north-south direction. These lands are mostly flat topped plateaus with some gentle undulations. They have been cleared during settlement and consist of rural land, favoured for their production, with grassed pasture predominating. The resulting landscape is cleared, with scattered trees, production crops, orchards and pasture land.

The third landscape character type is the **valleys**, generated by eroded Narrabeen shale side slopes, which are more easily eroded than the sandstone. These are located north of Kariong and are more prominent west and north-west of Wyong. These valleys cut through the surrounding forest, are more gently sloping and are cleared along the valley floor as they follow the meandering rivers or creeks. Vegetated ridgelines and steep areas divide them from each other. The **Wyong - Yarralong valley** runs west of Wyong and

then north as the valley forks into two at the upper reaches, with one leading to Cedar Brush Creek further north-west and the second leading to Ravensdale.

The **Jilliby-Dooralong valley** runs north from the M1 as far as Lemon Tree, with cleared valley floor and vegetated sides slopes of the enclosing Jilliby State Conservation Area.

A shorter valley occurs west of the M1 following Ourimbah Creek at **Palm Grove**. The cleared valley stops at the north-west edge of the Jilliby State Conservation Area but the creek continues through the forest to a source draining the plateau near Kulnura.

These areas of predominantly forests, productive agricultural lands, pasture and rural lifestyle occupy more than half of the LGA, with the more developed areas east of the M1.

The areas east of these rugged, vegetated areas of the LGA are dominated by the **coastal lagoons** in the north and the **Brisbane Water** in the south.

Brisbane Water as we see it today can be understood as a drowned river valley. Areas of flat sand deposits are visible along its edges, numerous islands are located where higher land was not inundated and steeper sloped areas also edge the water. The water body is a large expanse with a highly articulated edge forming bays, beaches and inlets. It runs north from Broken Bay near Lion Island to Gosford, with side inlets at Kincumber Broadwater and Woy Woy Bay. The body of water is the widest in the north near Gosford where Point Frederick juts out finger-like into the water.

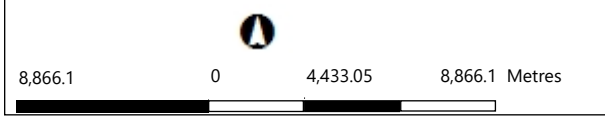
The **coastal lagoons**, in order from north to south, include **Lake Munmorah, Budgewoi Lake** and **Tuggerah Lake**. A few smaller lagoons exist further south; **Wamberal Lagoon, Terrigal Lagoon, Avoca Lake** and **Cochrane Lake** inland from Macmasters Beach. The large northern lakes are surrounded by relatively flat land with long and narrow sand spits separating them from the ocean. The **prominent headland of Norah Head** provides a form of separation between the two long beaches of Budgewoi beach and Tuggerah Beach. Although sometimes broken up into separate beaches by name only, these beaches are long sandy stretches of at least 8 kilometres each and form a distinctive contrast with the headlands south of The Entrance. On the western shores of the lakes a number of bays are located, punctuated by 'Points'. Some of the distinctive points across the bays include Budgewoi Point in the north separating Lake Munmorah from Budgewoi Lake; Wallarah Point separating Budgewoi Lake from Tuggerah Lake; and Chittaway Point, extending into the southern reaches of Tuggerah Lake. The rivers of **Wyong River** and **Ourimbah Creek** meander their way over relatively flat land into Tuggerah Lake.

The remaining coastline contrasts strongly with the Lakes. From **Bateau Bay** in the north to **Box Head** in the south the topography of the coastline becomes more varied, and steep, characterised by projecting sandstone headlines and smaller beaches. Of these, Terrigal, Wamberal and Forresters beach are longer and straighter sandy beaches with the sandstone cliffs of the **Wyrrabalong National Park** headland at Bateau Bay to the north. The coastal areas of Avoca can be seen as a topographic basin formed behind the beach around the coastal Lagoon, with Terrigal as a similar formation. Macmasters Beach and Copacabana are somewhat similar, but smaller in nature with the south facing headland of Copacabana jutting into the Tasman Sea.

The coastal open space system has been recognised as an important scenic and biodiversity corridor with opportunities to strengthen, expand and protect these natural assets.



- Legend**
- Local Government Area
  - + Railway Stations
  - M1 Motorway
  - Railway Lines
  - Surrounding LGAs
  - Major Roads - 1:400000
  - Crown Land
  - State Forests
  - Waterways and Ocean
  - NPWS Reserves



These maps have been compiled from various sources and the publisher and/or contributors accept no responsibility for any injury, loss or damage arising from the use, error or any omission therein. While all care is taken to ensure a high degree of accuracy, users are invited to notify Councils Geospatial Information Section of any map discrepancies. No part of this map may be reproduced without prior written permission. Measurements made within the mapping application should be treated as approximate only and are not survey accurate.

**FIGURE 2: NATURAL LANDSCAPES OF THE CENTRAL COAST**

South of Macmasters Beach the coastline is extremely rugged and diverse, with small bays, small beaches and sandstone headlands, (often named Points- Second point, Third Point, Bouddi Point, Gerrin Point), leading to steeply vegetated ridgelines. This area is predominantly taken up by **Bouddi National Park** and extends down to **Broken Bay** and the entrance to Brisbane Water as previously noted.

The remaining areas of the LGA can be described as **hinterland**, moderately sloping land with vegetated ridgelines and semi-cleared valleys. Much of the area between Matcham and Fountaindale remains forested and provides green links through this area. Mt Elliot is also a distinctive forested ridgeline separating North Gosford and Wyoming from the hinterland areas of Holgate and Matcham.

By reviewing the aerial photographs of the LGA, along with the landscape as we experience it, it is possible to understand this diverse topographic environment and its mix of dense forest, coastal areas and intermediate valleys and hinterland. This physical and natural environment can then be understood along with the cultural forces that have played a role in what we see within this landscape today.

Opportunities to expand biodiversity corridors exist by linking the areas in the west with the central and coastal areas. These corridors would provide increased flora and fauna habitat and movement for species across the LGA, also acting as linked stepping stones where continuous corridors may not be possible. These corridors would also include scenic value and recreational value.

Some of the natural landscapes present within the Central Coast LGA are either protected as National Parks or are forests, and nature reserves. Some of those present include:

**National Parks:** Bouddi, Popran, Dharug, Brisbane Water, Wyrribalong.

**State Conservation Areas:** Munmorah, Jilliby, Lake Macquarie.

**State Forests:** Ourimbah, McPherson, Olney, Wyong, Strickland.

**Nature Reserves:** Wamberal, Rileys Island, Pelican Island, Saratoga Island, Koolewong, Tuggerah, Wambina, Colonga Wetlands, Palm Grove.

**Other Reserves:** Kincumber Mountain Regional Reserve, Rhumbalara Reserve, Katandra Reserve, Sutton Reserve, and reserves along the many foreshores.

There may be other smaller nature reserves and areas of land that need to be identified within each of the detailed Cultural Landscape Assessments during the future study and opportunities where these can be physically linked as biodiversity corridors and scenic corridors explored.

## **CULTURAL LANDSCAPES** and components of the Central Coast

This framework is not a complete Cultural Heritage Landscape Assessment of the LGA. However the cultural influences within the area have been looked at in order to gain an understanding and provide guidelines for the future study. The types of cultural landscapes present in the LGA have been determined on a preliminary basis to this future study through an assessment of the landscape patterns, the natural landscape and the historic settlement data. These areas do not have definitive edges and areas may overlap. The scale of different activities within the landscape is both shaped by the character of the landscape and in turn these activities shape it.

Aboriginal activities within the landscape have occurred for tens of thousands of years with the landscape being a result of this close and collaborative relationship by Aboriginal people and the land. The spiritual connection with the land and landscape has been identified in some heritage listings, however there is significantly more detail to be undertaken in this area. This report, contributing to the framework, does not include the detailed consultation with the Aboriginal community. This would be a detailed assessment undertaken as part of the methodology described.

As early as 1788 Governor Arthur Phillip explored some of the bays at Brisbane Water. (Kass, *Gosford Thematic History*, p10). On a later journey in June 1789 Governor Arthur Phillip along with Captain John Hunter explored the area as far as Wiseman's Ferry. Though he found a harbour as good as Sydney Cove, it was not suitable for the main settlement "the land at Broken Bay being in general very high and in most parts rocky and barren". (Kass, *Gosford Thematic History*, p10).

The early settlements occurring along the Hawkesbury River were along the most accessible parts, in areas of deposited silt near and beside the river. Settlement also continued into the creeks with Mangrove Creek being one of the earliest areas to be settled. Evidence of these areas of early settlement may be found in wharfs within the creek areas, along with the subdivision and paddock layout of the lands.

The scale and spatial organisation of the settlement areas can be seen as settlement progressed to the plateau areas.

The scale of beef and grazing is often relatively large, with paddock divisions for dairy cattle and crops being smaller in size. These types of landscape patterns can be seen within the rural areas of the LGA and would be assessed for each Cultural Landscape area.

The landscape of the northern lakes has made these areas suitable for certain industries including power stations, due to the relative flatness of the land and the existence of a large water body that could be used for cooling required within the process of electricity generation. The resultant landscape displays the characteristics of this industry, making it an attractant as well as a product of this industry.

Similar observations can be made along the scenic lake edges or coastal areas, where the settlement patterns within this landscape have occurred due to the attraction of the landscape, however at the same time these settlements have changed the landscape and influenced them to the current day. Some of these changes may be seen as relatively positive, whilst others may be negative.

Further assessment of the major cultural landscape influences would be carried out in the future Cultural Landscape study. However, in order to understand the types of Cultural Landscapes that are present within the LGA the settlement as described in the Gosford and Wyong Thematic History studies has been reviewed.

The following Cultural Landscapes have been identified based on preliminary assessment.

1. River Landscapes
2. Plateau Lands
3. The Valleys
4. The Lakes
5. Brisbane Water
6. Coast, Escarpments and Beaches
7. Hinterlands
8. Freeway Interface and Central Lands
9. Townships and Development Corridor

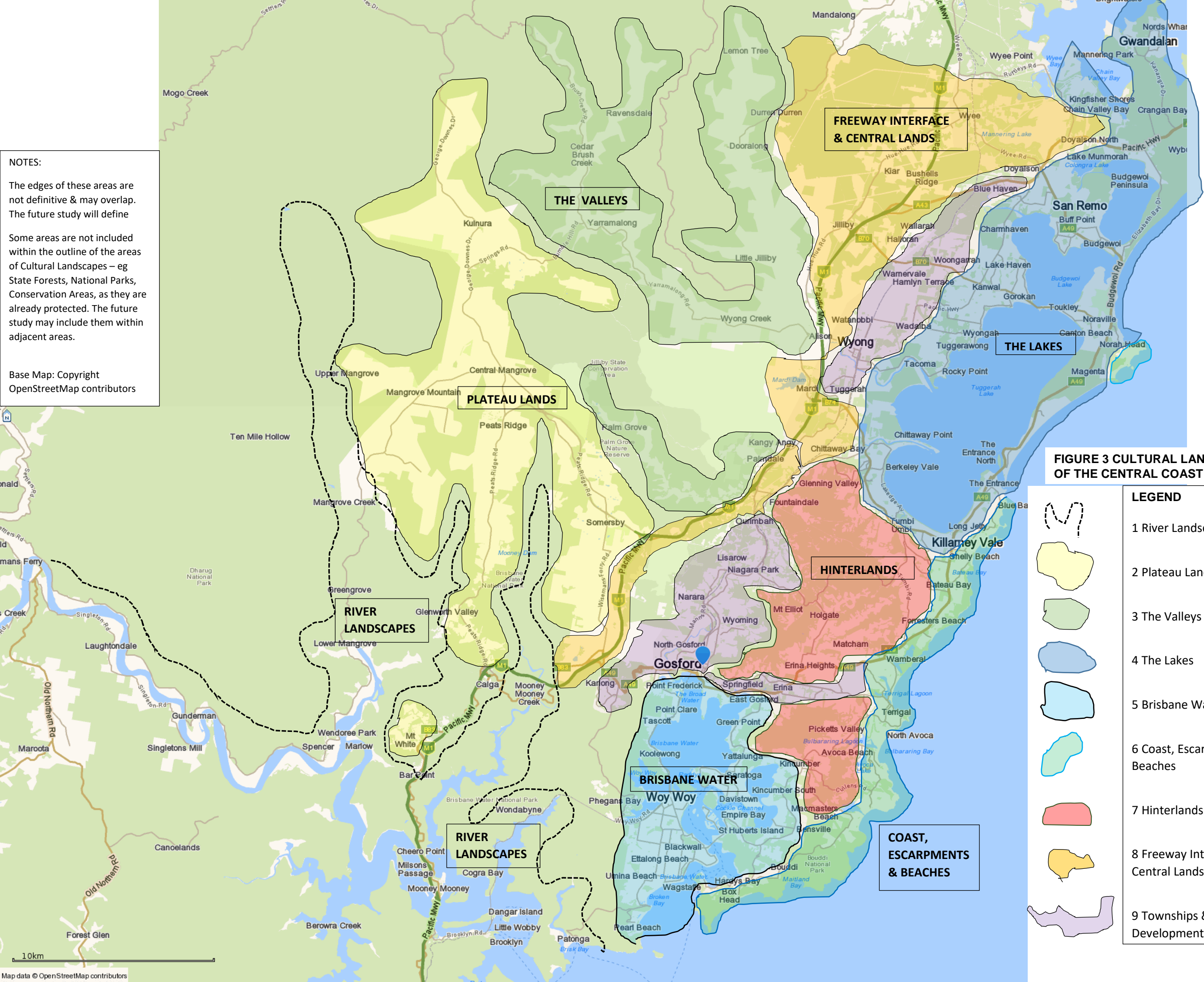
A broad outline of the types of Cultural Landscapes is shown in Figure 3. A brief summary of these landscapes follows. Their names have been selected mostly on the basis of natural landscape characteristics, in order to identify them easily, however they have not been defined solely by these characteristics.

**NOTES:**

The edges of these areas are not definitive & may overlap. The future study will define

Some areas are not included within the outline of the areas of Cultural Landscapes – eg State Forests, National Parks, Conservation Areas, as they are already protected. The future study may include them within adjacent areas.

Base Map: Copyright OpenStreetMap contributors



**FIGURE 3 CULTURAL LANDSCAPES OF THE CENTRAL COAST**

| LEGEND  |                                     |
|---|-------------------------------------|
|  | 1 River Landscapes                  |
|  | 2 Plateau Lands                     |
|  | 3 The Valleys                       |
|  | 4 The Lakes                         |
|  | 5 Brisbane Water                    |
|  | 6 Coast, Escarpments & Beaches      |
|  | 7 Hinterlands                       |
|  | 8 Freeway Interface & Central Lands |
|  | 9 Townships & Development Corridor  |

### 2.2.1 River Landscapes

These include rivers and creeks, being some of the earliest European settled areas, and are located generally in the south of the LGA. The Hawkesbury River being a major contributing influence on the discovery and settlement of the region, and the transport and access the river afforded. The Hawkesbury River from Broken Bay to Wisemans Ferry, becomes more narrow, more meandering and steeper in the middle area. It would be possible to divide this Cultural Landscape into sub-sections for assessment. Mangrove Creek has been included in this landscape as it is a relatively wide tributary of the river, in the south and was also one of the first areas subject to European settlement, with a distinctive pattern of land ownership and settlement. Aboriginal settlement in these landscapes has been over a considerably longer period and the Cultural Landscape significance of these river corridors and the associated river flats, landforms and ridges surrounding them needs to be considered through consultation.

Villages within the river landscapes include: Spencer, Marlow, Lower Mangrove, Greengrove, Mooney Mooney, Little Wobby, Patonga.

The main sub-sections in this landscape are:

- Mangrove Creek/Popran Creek/Glenworth Valley
- Hawkesbury River from Mangrove Creek to Little Wobby and Patonga including Mooney Mooney Creek.
- Hawkesbury River from Mangrove Creek to Wisemans Ferry



Hawkesbury River as seen from Greenman's Valley Recreation Park on top of the sandstone outcrop looking towards houses edged along the river near Marlow on the left, the mangroves of Marlow Creek visible on the left and the mangroves of Gentleman's Halt in the middle where the Hawkesbury River meanders to the west leading up to Wiseman's Ferry, some --- kms further up the river catchment.

Source Greenman's Valley Recreation Park via google website

### 2.2.2 Plateau Lands

The plateau lands were described previously under natural landscapes, and are located west of the M1 between Somersby, Mt White and Kulnura. The State Heritage listed Calga Aboriginal Cultural Landscape is located on the plateau lands with 'heritage significance as a symbolic and ritualised cultural landscape comprised within a natural sandstone amphitheatre formed around a gully..... The landscape is associated with dreaming stories and belief systems.' (SHI Calga Aboriginal Cultural Landscape No. 5064142)

Land at Somersby was taken up in the mid-1880s. Somersby to Mangrove Mountain and Peats Ridge was settled with orchards, citrus and apple growing. These were transported to Hawkesbury River railway station or to wharfs on Mangrove Creek. (Kass, p28). One of the first roads was built from the plateau to Gosford in 1892, known then as Gosford Road, now known as Debenham Road. The renowned fruit growing region prevails today, with orchards forming a distinct vegetation pattern within these lands.

Peats Ridge land was first taken up in 1896, following the earlier Somersby take up in 1885 by Alexander Hunter and his sons. Mangrove Mountain settlement was later. By 1910 public agitation pressured the Lands Department to open up land on the plateau. By 1913 all of the land along the main road frontage was taken

up for orchards. Some soldier settlement schemes followed both World Wars and the renowned citrus growing in the area grew to include tomatoes and passionfruit. (Kass, p28)

Kulnura was opened up to fruit in 1904, with Walter Black being the first known in the area on 'Telopia' property. It is of interest that the name for his property is the Latin name for Waratah, and it is expected that these prevailed in the area.

The opening up of the areas would have required extensive tree clearing and the timber cutters carrying out this work would have sold this timber. These activities identify the landscape we see today where the flatter areas are cleared and the steep lands remain forested. The paddock layouts reflect these farming practices. The largest area of land at Kulnura was reported as 100 acres. It is of interest that the wider cleared areas of the plateau occur at Kulnura and to some extent Central Mangrove.

The fingers of these cleared plateau lands extend mostly north- south. Villages within the Plateau landscapes include: Mt White, Calga, Peats Ridge, Central Mangrove, Somersby, Mangrove Mountain, Kulnura.

The main sub-sections in this landscape are:

- Mt White
- Calga – Peats Ridge- Central Mangrove
- Somersby - Central Mangrove
- Mangrove Mountain – Central Mangrove – Kulnura



Top: Central Mangrove and right: near Kulnura. The landscape can be seen to be neatly divided paddocks of medium scale, defined by tree planting in many cases and windrows of pines in some areas. These contrast visually with the pasture areas and native forests. The trees often define the ridgelines and exotic deciduous trees have been planted. Farm buildings consists of dwellings, sheds and more intensive production enclosures. The values of this cultural landscape character should be protected through the development of guidelines following the principles outlined later.



### 2.2.3 The Valleys

The valleys north-west of Wyong and occurring to the north-east of the Plateau Lands include the rich farming valleys separated by dense forested ridgelines. Expansion in the 1850s occurred 'where "country lots' were offered for sale by the government on Crown lands in areas that were unlikely to attract wealthy

pastoralists'. (Scobie. P27 after B. Strom) Ironically, this settlement cannot be said to be similar today, where areas such as the Yarramalong Valley has attracted some wealthy and well known Sydney purchasers.

Lots were located along Wyong Creek as far as the junction with Cedar Brush Creek and up to Jilliby Creek and Little Jilliby. The 'Robertson Land Act of 1861....encouraged small settlers by means of special incentives for those buying small blocks of land, forty acres or more.' (Scobie, p28 after B Strom) Settlement continued to Ravensdale further along this valley. The Stinson family, prominent in the district for several generations, acquired land at Yarramalong in the period of the 1850s. (Scobie, after E Stinson, p 27)

Timber within these lands was a major feature of the areas, with descriptions of 'impenetrable forests' from the early explorers and settlers. The Wyong area was attractive to timber-getters due to the red cedar. Much of the tree removal in the 1832 was reported that 'the cedar-getters were causing devastation to the area through the vast quantities of timber they were removing.' One of the first official timber licences was taken up by Frederick Hely on his lands at Yarramalong. (B Strom. *Gosford/Wyong History and Heritage*, p9)

The Ourimbah Valley was an early centre of the timber industry with J.L. Travers leasing 2580 acres near Kangy Angy in the early 1850s with a seam Saw Mill in full operation by 1855. (B Strom. p14)

The settlement of these valleys has continued to be in relatively small parcels of land, and provide a bucolic lifestyle to this day. This highly scenic character has continued to attract settlement for those seeking to escape city life. Villages within the Valley landscapes include: Yarramalong, Cedar Brush Creek, Ravensdale, Dooralong and Jilliby.

The main sub-sections in this landscape are:

- Wyong Valley – Yarramalong Valley – Cedar Brush Creek – Ravensdale.
- Jilliby – Dooralong Valley - Lemon Tree.
- Palm Grove and Ourimbah Valley.



Above: Yarramalong and Wyong Valleys. These narrow valleys include densely forested sideslopes and ridges providing visual enclosure to the valleys. Small scale paddocks are concentrated on the valley floor. Small clusters of rural residences and clustered farm buildings sit comfortably at the edges and base of the valley floor. The forested ridgelines and sideslopes are important to protect the integrity of the valley, along with the size of the building clusters.

#### 2.2.4 The Lakes

These areas are the major lakes in the north-east of the LGA. Smaller lakes south are seen as a component of the cultural landscape area in which they fall. Tuggerah Lakes was discovered in 1797. (Scobie, p22) It wasn't until the 1820's that settlement of this land within the Wyong Shire commenced. It was in 1825 that

land around Upper Tuggerah Lakes was selected by Jeremiah Walters. (ibid p23) The settlement around the lakes and leading inland along Wyong Creek can be seen in the 1840's map of Principle land grants. (Scobie p26 Source: William Baker, Map of the County of Northumberland National Library of Australia). Frederick Hely, acquired land also in 1825 and eventually owned land in the area of Kangy Angy, and Wyong Creek downstream to Tuggerah Lake and as far south as Tuggerah. He also owned land in Wyoming (outside this lakes area) and concentrated his activities there. (Scobie p 23)

Other early land owners included Jeremy Slade at Budgewoi and Thomas McQuoid at Ourimbah. The pockets of settlement continued with 'John Slade selecting 640 acres with frontages to Lake Munmorah and Lake Budgewoi' in 1828 and Henry Holden selecting 640- acres at The Entrance. (Scobie p 23) He rented another 2000 acres at Norah Head in 1929.

Another prominent land owner in the district was Edward Hargraves (official discoverer of payable Gold in Australia - although contested). He purchased 75 acres of land on the coast near Norah Head along with other properties in the district, including one at Budgewoi and another at Toukley. (Scobie after B Strom. p 27)

Other cultural influences within the lakes area include rutile and sand mining. This has influenced what we see in the lake area, with some of the natural areas subject to the past activities of mineral deposits mining, modifying the natural landscape.

The lakes are popular residential destinations with many residential areas flanking the foreshores. Some of these include: Budgewoi, Buff Point, Blue Haven, San Remo, Lake Haven, Kanwal, Wyongah, Gorokan, Toukley, Canton Beach, Tuggerawong, Chittaway Bay, Killarney Vale and Long Jetty. The Entrance is located on the eastern edge of Tuggerah Lake and marks the point where the water from the three Tuggerah Lakes connects to the ocean. Power stations also occur due to the flat topography and the source of water.

Wetlands occur in areas around the lakes, as well as Wyrabalong National Park and nature reserves.

The main sub-sections in this landscape are:

- Lake Munmorah and Budgewoi Lake
- Tuggerah Lake

Right: The lakes showing forested edges and ridgelines, with some areas of residential development along the lake shore opposite. The vegetated ridgelines enclose the large visual catchment of the lakes and provide an important natural skyline. These areas contrast with the mountains to the west of the LGA, and the more rugged coastline south of The Entrance, mark the change in the landscape character. Further research in the future cultural landscape study is necessary to identify Aboriginal significance and other areas of significance.



### 2.2.5 Brisbane Water

Due to its unique qualities, varied settlement patterns and scale, Brisbane Water is a cultural landscape area of complex and varied character. It was settled early within the LGA, was subject to early land clearing and experimental farming to determine what could grow in the sometimes difficult terrain. Areas were too wet for

sheep farming. Timber cutting was part of the early industry, with many of the existing valuable timber, such as red cedar, extracted early. Other timbers cut include Blue Gums, Blackbutt and Ironbark.

Areas of Brisbane Water became renowned boat building, with ready supply of timber for such activities. Brisbane Water was accessible by train with the railway line between Newcastle and Gosford completed in 1887. This allowed areas around Woy Woy and the inlets of Brisbane Water to become popular tourist destinations. The arrival of the rail line greatly improved access here, but adversely affected the coastal areas, due to the decline of boat transport. The distinctive railway causeway to Gosford affords a fabulous rail journey over the water.

Environmental activism has been a strong means of protection of the environmental assets within the LGA and in particular Brisbane Water. The work by committed local residents is described in the histories. This important individual work resulted in an extension to the Bouddi National Park around Killcare, along with protection of Riley’s Island and the allocation of a Flora and Fauna Reserve of 950 acres extending from Pearl Beach to Patonga. Minard Crommelin in 1947 gifted her property at Pearl Beach to the University of Sydney. (Kass, p87 after Brisbane Water Historical Society, *Women of the Central Coast*, Part 1) Beryl Strom gifted her home next to the Bouddi National Park, (both hers and her earlier deceased husband), to the National Parks and Wildlife Service in 2002.

Brisbane Water may be divided into sub-sections but it should firstly be considered as one large cultural landscape. Further individual subsections would be determined in the future detailed study.



Above: Brisbane Water looking south-east. The bridge over The Rip is located to the right. The forested ridgeline of Bouddi National Park can visually enclose the water body landscape with the edgeline residences hugging the water edge opposite. This water is more dissected by islands and projecting Points, with a smaller expanse of water in this part of Brisbane Water, than that south of Gosford. The scale of the open water can also be seen to be smaller than The Lakes area further north. The variety, diversity and contrast is often associated with high scenic quality. The historic cultural landscape layer, through further research in the future study will add to this assessment. Top: Similar view, taken in 1905 from slightly different location, however the forested ridgeline is present and the waters beyond The Rip visible. (Source: Courtesy of Central Coast council website)

### 2.2.6 Coast, Escarpments and Beaches

The beaches and coastal areas have been long sought after as destinations for recreation and leisure over many of the settlement periods. The coast road building occurred during 1930s with unemployment relief funds. The road assisted in providing better access to these areas for tourism. Access roads can be seen in the 1930s throughout the Gosford region in a map from the Department of Lands at the time. This map reflects the opening up of areas with better access and subsequent development. This influence is a key factor in the understanding of Cultural Landscapes and would be explored further in the detailed assessment of these landscapes as part of the circulation routes.

The coastal area from The Entrance south to Box Head forms the major area of this Cultural Landscape. This landscape is highly varied, with dramatic clifflines, contrasting forested areas between the coastal developed popular beach areas. Areas of National Park exist with protected forested and highly varied areas of vegetative, shoreline and topographic diversity.

Whilst sub-sections of this landscape may be looked at in more detail the characteristics of the whole area would be first identified.

Potential sub-sections in this landscape would be:

- Bateau Bay to Terrigal- long sandy beaches with Wyrabalong National Park in the northern portion.
- North Avoca to Macmasters Beach – Topographic complexity with cliffs enclosing crescent beaches and coastal residential areas hugging the landscape.
- Macmasters Beach to Lobster Beach and Wagstaffe, encompassing mostly Bouddi National Park - Highly varied and scenic, leading from the Tasman Sea to Broken Bay.



Above Left: Bouddi National Park showing the enclosed beaches/bays set between sandstone headlands. (Source; National Parks & Wildlife Service website).

Right: North Avoca beach with the headland enclosing the beach from the north.

Left: Avoca beach late 1960s showing the prominent pines along the foreshore, the extent of development and the housing along Cape Three Points Road. The patchwork of rural land divided by trees can be seen behind around Picketts Valley. A similar view in 1953 has far less residential development behind the beach, indicative of the boom in housing.

(Source: Courtesy of Central Coast Library website).

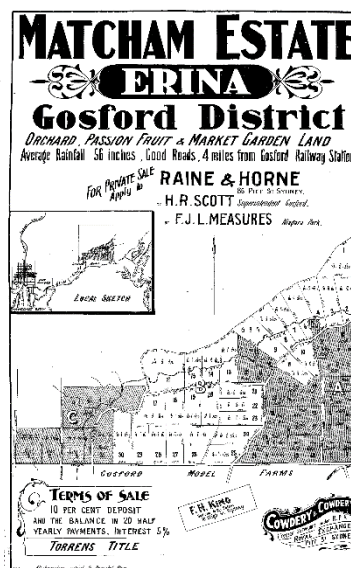
### 2.2.7 Hinterlands

The hinterland area is identified as the area between the coast and the central developed urban corridor from Gosford to Wyong. This land is set inland from the coastal corridor and remains an undulating semi-rural interface of mixed uses. Dense forested areas remain in the northern area behind Tumbi Umbi. A dividing finger of development follows the ridgeline along the Central Coast Highway, with the hinterlands north and south of this connection. This finger saw development along the new road from Erina to Terrigal, completed in 1911, with the Gosford to Terrigal completed link in 1918. As has occurred throughout most of the LGA the construction of major road links has been followed by development along these roads.

The areas of Erina and Erina Heights could be seen as part of the townships and development corridor cultural landscape area, however the land north and south of this are strong hinterland areas. These are characterised by Picketts Valley in the south and areas to the north including Matcham, Holgate, and Mt Elliot. The Principle land grants map of the 1840s shows some large parcels of land in the Matcham area, and would be further researched in the future study. Sawmills were present in this area, reflecting the value of the timber in this area early in the settlement. The 1912 subdivision plan of Matcham Estate Erina, identifies smaller parcels of land for orchard, passion fruit and market garden land, identifying the good rainfall and the short distance to Gosford Railway Station.

Potential sub-sections in this landscape could include:

- The areas south of Central Coast Highway- Picketts Valley.
- The areas north of Central Coast Highway- Matcham, Holgate, Mt Elliot.



Above Right: Cass and Sid Smiths Sawmill Matcham 002781 (Source; Courtesy of Central Coast Council library website).

Right: Subdivision plan of Matcham 1912, SubV0115 (Source: Courtesy of Central Coast Library)

### 2.2.8 Freeway interface and Central Lands

The central lands surrounding the freeway extend from Kangy Angy and Berkeley Vale to Kia, Bushells Ridge and Doyalson.

1930 saw the opening of the Pacific Highway. Further south the alignment was to access Gosford, rather than following the more suitable plateau lands due to pressure from Gosford commercial interests.

Areas along the Pacific highway have been grouped with the townships and development corridor, as the opening of the highway saw this area developed. The M1 freeway however, is a much later connection, completed in various stages; the first being the F3 in the 1980s, then the final freeway alignment in 2008, with upgrades also occurring this year to accommodate the increased traffic along this important corridor.

The landscape along this major link includes service provisions such as business parks, small scale airport, industries and services being water supply plants, power stations and sand extraction. It is a relatively flat land of large scale land uses separated by undeveloped forested areas.

Areas included within this landscape are: Berkeley Vale, Kangy Angy, parts of Mardi, Alison, Warnervale, Halloran, Wallarah, Kiar, Bushells Ridge, Doyalson, Vales Point power station and Munmorah Power Station.

### 2.2.9 Townships and Development Corridor- Gosford to Wyong

With the development of isolated farms and small industries the need for support and supply for these communities developed, and in turn the growth of communities into villages and small towns. The latter part of the nineteenth century is characterised by this urban growth. (Scobie, P28). For example Travers' saw-mill in Ourimbah developed into a clusters of houses, huts, stables and a school house. The area south of Ourimbah was purchased in 1870 and created a settlement known as Blue Gum Flat which extended south as far as the border with Gosford City. This became the most important settlement in the district of Wyong. (Scobie, p28 after B. Strom) This also included a church and post office.

1878 saw the Village of Norah subdivision, with the growth of subdivision escalating following the opening of the Great Northern Railway 1887-89. The Crown Land Act of 1884 also had an impact on the development of towns and the extension of subdivisions throughout the district.

Robert Cox was granted over 1000 acres in the area of Lisarow and Ourimbah in 1838. (Scobie, after E Stinson, p23)

The corridor from Gosford to Wyong, and further north to Doyalson, can be seen as the development of residential areas, along with the accompanying services. This follows both the railway line and the Pacific Highway for much of the route, with continuing development occurring north around Wadalba and surrounds.

Subdivision for soldier settlement was created in 1917 at Berkeley Estate. Agriculture and dairying continued the settlement patterns. The Entrance and Wyong were the two principle towns in the Wyong area by 1961 with Gosford and Woy Woy in the Gosford Area.



Above : Ourimbah south after 1951

(Source; Courtesy of Central Coast Council library website).

### **2.3 Details of the cultural landscape assessment**

Following the identification of the Cultural Landscape areas it will be necessary to carry out a more detailed layer of assessment for each Cultural Landscape for further review. This may be done in a staged process dependent on the available resources. The details to be covered on a local scale are:

- Aboriginal Cultural heritage – landforms, significant vegetation, views, circulation routes and connections, sites, spiritual lands, songlines; through consultation with the Aboriginal community.
- Overall landscape patterns, spatial organisation of land use, vegetation patterns (tree groupings).
- Building clusters, structures and other special features.
- Circulation routes.
- Historical associations including interpretive (historic) and associative (social) value.

A guideline for this phase follows in a methodology assessment table.

**FIGURE 4 METHODOLOGY ASSESSMENT TABLE FOR EACH CULTURAL LANDSCAPE - GUIDELINE**

|   |   |
|---|---|
| <p><b>Aboriginal Cultural heritage values and Landscapes</b></p>        | <ul style="list-style-type: none"> <li>▪ Landforms &amp; vegetation of significance – ridgelines, outcrops, prominent landmarks, significant trees or vegetation groups, spatial and symbolic landforms through dreaming or spiritual belief systems.</li> <li>▪ Landscape boundaries of authorisation: initiated, gender, group?</li> <li>▪ Views and sightlines – possible lookouts, visual connections between sites, signal points.</li> <li>▪ Shelters, middens, engravings, stone arrangements, pigment art, and archaeological deposits,</li> <li>▪ Spatial &amp; symbolic sites and topography associated with stories, songs, dances and traditional spiritual practice.</li> </ul>  |
| <p><b>Landscape Pattern</b><br/>comprising:</p>                         |   |
| <p>Spatial organisation</p>   | <ul style="list-style-type: none"> <li>▪ Scale of the landscape- large and uniform? Small and varied?</li> <li>▪ Topography, the resulting landform and the resulting landscape scale.</li> <li>▪ Fencing reflects the scale and subdivides the land.</li> <li>▪ Is water present? What is the nature of the water?- large lakes, wide river, small meandering creek. Long beaches, small enclosed beach, cliffs/escarpments,</li> <li>▪ Are there contrasting elements or is it uniform and cohesive?</li> <li>▪ Scenic qualities- views, visual corridors, scenic character, high quality elements, detracting elements, visual access to landscape from villages and circulation routes.</li> </ul>  |
| <p>Land use Patterns</p>  | <ul style="list-style-type: none"> <li>▪ What are the main land uses and how do they impact on the landscape?</li> <li>▪ Are there large industrial uses, small scale residential, undeveloped forests, cleared rural land, rural- residential, urban, commercial, others?</li> <li>▪ Is the arrangement of uses in a grid, curvilinear, varied or random?</li> </ul>   |
| <p>Vegetation Patterns</p>  | <ul style="list-style-type: none"> <li>▪ Is the area cleared, scattered, or mixed?</li> <li>▪ Are there areas of uncleared land (forests), what are the edges of these areas?</li> <li>▪ Are there distinct arrangements of vegetation?- eg. Valley floor cleared, ridges treed.</li> <li>▪ Orchards, crops or distinctive agricultural uses?</li> <li>▪ Shelter belts, tree avenues, fence lines or driveways defined by trees?</li> <li>▪ Are there distinctive tree species? Rainforests, pine trees, tall forest species, low coastal heath.</li> </ul>   |
| <p><b>Building Clusters Structures &amp; other special features</b></p> | <ul style="list-style-type: none"> <li>▪ Rural dwellings scattered throughout landscape.</li> <li>▪ Clusters of rural buildings form pockets.</li> <li>▪ Walling used to divide landscape or distinctive fence types to divide the rural land.</li> <li>▪ Is there a relationship to where built form is located? – Adjacent to rivers, on hillsides, on ridges?</li> <li>▪ Are there distinctive built features- ie small rural cemetery, towers associated with a particular land use, lookouts, historic homestead, mining structure?</li> <li>▪ Landmarks- church, distinctive building or merit or historical significance.</li> <li>▪ Villages present and where- at road junctions, along linear road.</li> <li>▪ Towns and their frequency and scale.</li> <li>▪ Discuss key towns and villages within the area- link to Heritage Study and assessment of these carried out elsewhere.</li> </ul> |
| <p><b>Circulation Routes</b></p>  | <ul style="list-style-type: none"> <li>▪ Historic routes- early roads following similar alignment today.</li> <li>▪ Study in closer detail the early road maps and aerials.</li> <li>▪ Major access to destinations.</li> <li>▪ Highway, major road, local road, lane, dirt tracks?</li> <li>▪ Railway.</li> <li>▪ Wharfs.</li> <li>▪ Bridges and river crossings.</li> <li>▪ Discuss alignment of circulation routes within the landscape.</li> </ul>  |
| <p><b>Historical Associations</b></p>                                   | <ul style="list-style-type: none"> <li>▪ Relate to the settlement patterns, early land acts, grants and subdivisions from the history section of the study.</li> <li>▪ Discuss historical themes and their evidence in the landscape.</li> <li>▪ Are there links to a person, event or activity that is evident?</li> <li>▪ Do any areas hold special significance to a group or individuals for social, cultural or spiritual reasons</li> </ul>   |

|  |   |
|--|---|
| <p><b>Conservation Management Guidelines</b></p> | <ul style="list-style-type: none"> <li>▪ For each Cultural Landscape area identify conservation management issues.</li> <li>▪ Issues may include recommended landscape conservation zones, settings/curtilages to protect important items or areas. This would include Aboriginal Cultural Heritage Landscape areas.</li> <li>▪ Tree planting may be recommended in areas, and/or further tree preservation, limits to tree removals.</li> <li>▪ Limits to subdivision and other development may be recommended.</li> <li>▪ Land uses- permitted or excluded.</li> <li>▪ Discussion on detractors within the landscape or contributing factors to be protected.</li> <li>▪ Protection of ridgelines, restrictions on clearing and building on ridgelines.</li> <li>▪ Protection of important view corridors, viewpoints, lookouts.</li> <li>▪ Protection of watercourses and gullies.</li> <li>▪ Guidelines for circulation and road access.</li> <li>▪ Built form – guidelines on materials, colours, cut and fill.</li> <li>▪ Access for recreation, walking trails, tourist routes, or restrictions to protect values.</li> <li>▪ Biodiversity &amp; scenic corridor recommendations including strengthening, expanding and protection of natural areas.</li> <li>▪ Protection of natural assets and rural lands, as rural cultural landscapes.</li> </ul> |
|--|---|

## 2.4 Conservation Management Guidelines

This phase 4 of the study would be prepared for each Cultural Landscape area as noted in the previous table. Where broad scale guidelines apply to all of the areas these would be included also. The guidelines would also include input on archaeological items and Aboriginal Cultural Heritage. This would be merged during phase 3 of the framework.

These guidelines and recommendations can be incorporated into the planning strategies of the LGA. For example a specific DCP for key Cultural Landscape Conservation zones can be prepared to provide planning guidelines. This has occurred in Wingecarribee Shire where the key Historic Cultural Landscapes were identified as Environmental Protection Zones - Landscape Conservation, and a DCP prepared. The types of Conservation Management Guidelines would include preserving and enhancing the landscape and heritage character to ensure the conservation of significant cultural, aesthetic, heritage and environmental components of the Cultural landscapes. Criteria for responsible development and use of the land to maintain the cultural heritage and scenic value would be provided.

Guidelines would be developed in a similar manner to guidelines for residential development or other factors within the LGA. They would be communicated through graphic and written recommendations in an easily understood format. Also as part of the DCP for the zonings within the LEP these guidelines would be included. Zones such as; Rural landscape, General Residential, Low Density Residential, Villages, Environmental Management and Environmental Living would include guidelines that relate to the conservation of the Cultural Landscapes.

Part of the Cultural Landscape assessment would include detail in relation to recommendations for heritage listing of Cultural Landscapes, Heritage Conservation Areas and individual items that have been identified during the detailed assessment. This is a large task and the ability to assess this level of detail by breaking the LGA into Cultural Landscape areas would enable buildings, landscape areas, trees, vegetation groups and gardens, to be considered for heritage listing, either locally or state wide. Certainly additions to heritage listings within the LGA would result from such a study.

Guidelines could include but not be limited to issues related to the following issues:

- Identification of landscape conservation zones: define curtilages and settings including view corridors within zones to protect areas of high Aboriginal Cultural landscape value and historic cultural landscape value.
- Protection of ridgelines – maintenance of prominent ridges identified because of visual impact, and Aboriginal cultural heritage value, and noted in the key cultural landscape assessment. Restrictions on clearing of vegetation on ridgelines, restricting building on ridgelines or
- Protection of steep land, including vegetation on steep land.
- Allotment or subdivision guidelines within the Rural Cultural landscapes to respect the slope of the land.
- Guidelines for circulation routes including roads within properties, driveways and subdivision roads – may include recommendations for alignments that are sensitive to landform and that respect prominent features within the Cultural Landscape. Also circulation alignments may follow the principles of existing circulation routes within the Cultural Landscape. Recommendations on materials for these circulation routes.
- Siting guidelines for new built form: this would draw from the existing Cultural landscape built form and reinforce the existing areas where good built form siting exists.
- Built form: Guidelines on roof form and building form that is compatible with the Cultural landscape. This may be different for the various Cultural landscapes; Materials appropriate to buildings, fences, gates

and other structures; examples of clusters of rural building recommendations where appropriate; complimentary and compatible colours for buildings and their components.

- Landscape planting guidelines; ie to reinforce boundary windrows, shelters, protection of existing vegetation, selection of appropriate planting species compatible for various Cultural landscapes.
- For each Cultural Landscape discuss key land uses to promote and allow, and those that should be restricted or excluded.
- Limited extents for various land uses based on protection of values within the Cultural Landscape.
- Discuss contributors that provide a positive impact in the Cultural Landscape and how to promote these.
- Discuss detractors that provide a negative impact in the Cultural Landscape and how to avoid these.
- Identify potential enhancement for recreation, including walking trails, scenic drives, tourist routes, interpretive areas.
- Identify restrictions on access to protect values.
- Identify recommended additional heritage listings both locally and within the State Heritage Inventory system.
- Link guidelines with other environmental and biodiversity guidelines including strengthening and expanding biodiversity corridors, linking high natural assets of the western lands with the eastern lakes, coast and hinterland areas.
- Coordinate scenic value and enhancement within cultural landscapes and include where recreation can be combined with these values.
- Natural values of native vegetation of high conservation to be protected, and linked with environmental guidelines for the protection of vegetation that has been over- cleared in the past and including wetlands, lakes, estuaries, rainforests and areas of geological significance.

### 3 Case Study

A selected Cultural Landscape area has been investigated through phase 3 methodology as a 'test' and demonstration of the methodology. A draft of this assessment will enable adaptations to be made and further explanations of the methodology as required.

The proposed case study is the River Landscapes in the Mangrove Creek area. The assessment of this area is included in the Appendix 1.

### 4 Conclusion

The information provided in this framework outlines an understanding of the types of Cultural Landscapes present within the Central Coast LGA. These diverse landscapes are not only based on natural or ecological values, but have a connection to social, cultural and spiritual influences. They are landscapes that have been modified by human activity. The future Cultural Landscape Framework study is recommended to be carried out for the Cultural Landscapes identified in this report. The detail associated with this future study will identify special areas, places and townscapes within each Cultural Landscape, record the existing heritage listings and recommended listings to include not only places and items but landscapes, trees, vegetation groups and conservation areas.

The Cultural Landscapes include:

- The Rivers.
- Plateau Lands.
- The Valleys.
- The Lakes.
- Brisbane Water.
- Coast, escarpments and beaches.
- Hinterlands.
- Freeway interface and Central lands
- Towns and Development corridor.

## 5 References

Australia ICOMOS, Burra Charter 1999. including *Guidelines to Burra Charter: Cultural Significance*.

Australia ICOMOS, Understanding Cultural Landscapes Flyer.

David Scobie Architects with Nicole Secomb. *Wyong Shire-wide Heritage Review* for Wyong Shire Council. November 2010.

Department of Environment, Climate Change and Water NSW (previously National Parks and Wildlife Service). *Cultural Landscapes – A practical guide for park management*. October 2010.

Department of Planning, *Street Trees in NSW*. 1990.

Kass T. *A Thematic History of the City of Gosford* prepared for Gosford City Council. January 2016.

Landscan & Prof. Ken Taylor. *Historic Cultural landscape Assessment for Wingecarribee Shire, NSW*. 1992.

NSW Heritage Office. *Heritage Information Series Natural Heritage Principles*. 2000.

NSW Department of Planning, Industry and Environment. *Central Coast Regional Plan 2036*.

Websites:

<https://www.nationalparks.nsw.gov.au/visit-a-park/parks/popran-national-park>

<https://www.openstreetmap.org>

<https://www.centralcoast.nsw.gov.au/plan-and-build/planning-controls-and-guidelines/online-maps>

## **6 Appendices**

### **6.1 Appendix 1 Case Study**

Refer to the separate document attached to reduce file size

