

Figures



Figure 3.1
Budgewoi and Lakes Beach
Coastal Hazard Planning Lines and Hazard Zones

0 50 100 150 200 Metres



Legend

- Immediate Coastal Hazard Planning Line
- 2050 Coastal Hazard Planning Line
- 2100 Coastal Hazard Planning Line
- Combined Bluff, Beach & Dune Zone
- Geotechnical Hazard Zone
- A SMEC Area of advice
- B SCE Area of advice

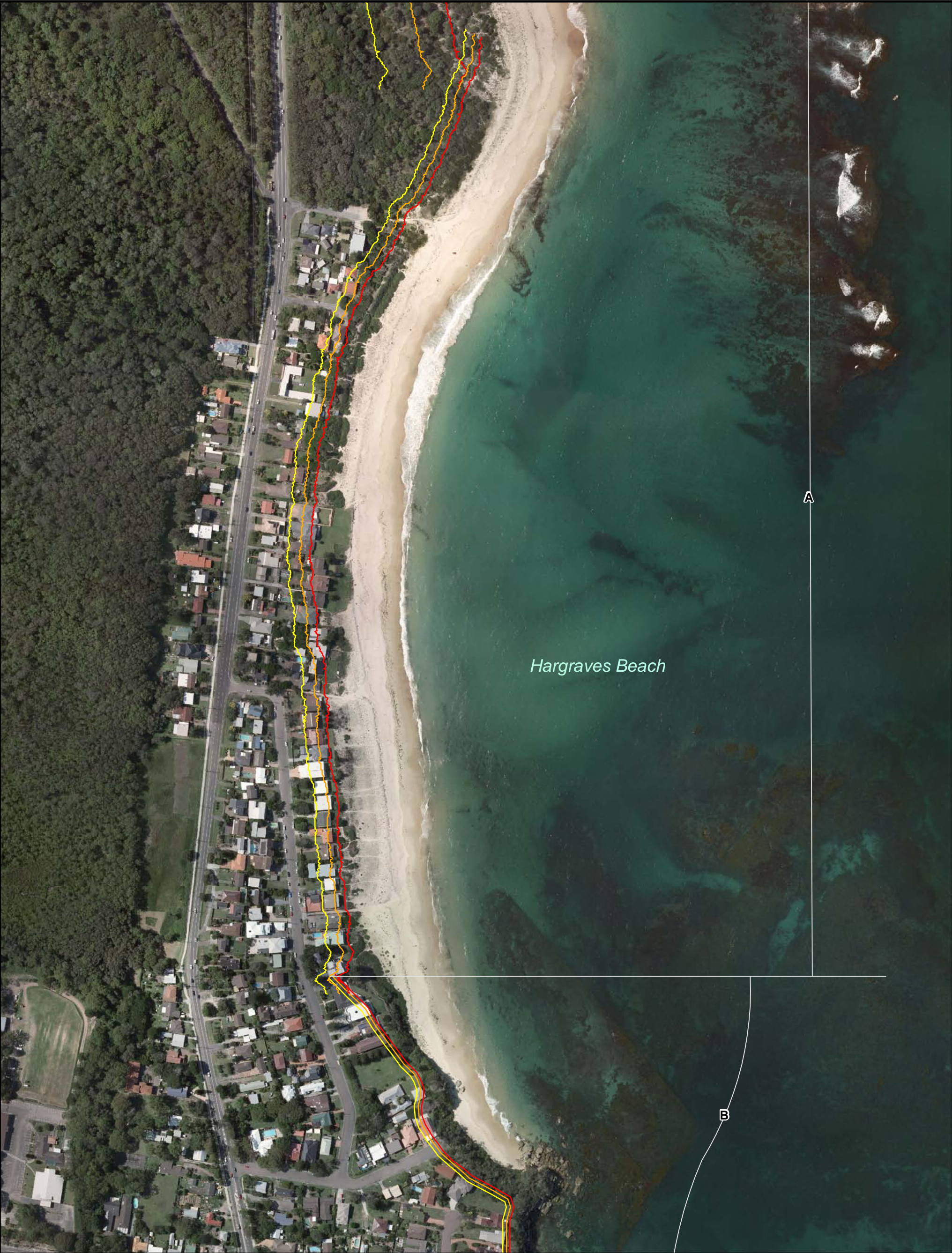


Figure 3.2
Hargraves Beach
Coastal Hazard Planning Lines and Hazard Zones



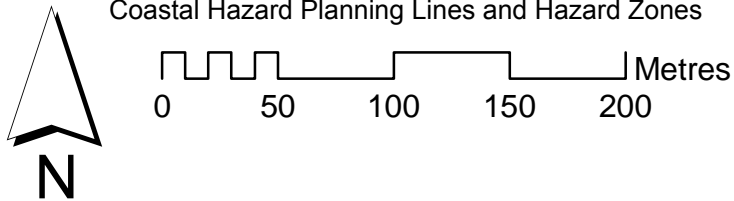
0 50 100 150 200 Metres

Legend

- | | |
|--|-------------------------------------|
| — Immediate Coastal Hazard Planning Line | — Combined Bluff. Beach & Dune Zone |
| — 2050 Coastal Hazard Planning Line | — Geotechnical Hazard Zone |
| — 2100 Coastal Hazard Planning Line | — A SMEC Area of advice |
| | — B SCE Area of advice |



Figure 3.3
Jenny Dixon Beach
Coastal Hazard Planning Lines and Hazard Zones

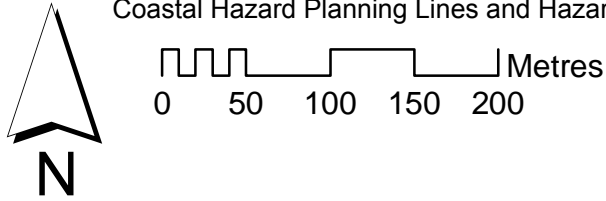


Legend

- | | |
|--|-------------------------------------|
| — Immediate Coastal Hazard Planning Line | — Combined Bluff. Beach & Dune Zone |
| — 2050 Coastal Hazard Planning Line | — Geotechnical Hazard Zone |
| — 2100 Coastal Hazard Planning Line | — A SMEC Area of advice |
| | — B SCE Area of advice |



Figure 3.4
Cabbage Tree Harbour, Lighthouse & Pebbly Beach
Coastal Hazard Planning Lines and Hazard Zones

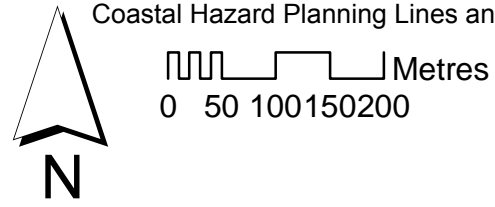


Legend

- | | |
|--|-------------------------------------|
| — Immediate Coastal Hazard Planning Line | — Combined Bluff. Beach & Dune Zone |
| — 2050 Coastal Hazard Planning Line | — Geotechnical Hazard Zone |
| — 2100 Coastal Hazard Planning Line | — A SMEC Area of advice |
| | — B SCE Area of advice |



Figure 3.5
Soldiers & Pelican Beach
Coastal Hazard Planning Lines and Hazard Zones

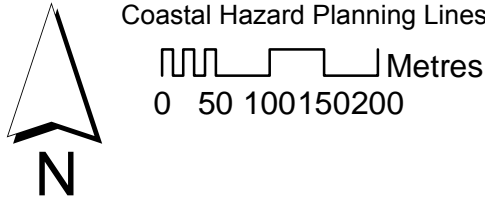


Legend

- | | |
|--|-------------------------------------|
| — Immediate Coastal Hazard Planning Line | — Combined Bluff. Beach & Dune Zone |
| — 2050 Coastal Hazard Planning Line | — Geotechnical Hazard Zone |
| — 2100 Coastal Hazard Planning Line | — A SMEC Area of advice |
| | — B SCE Area of advice |



Figure 3.6
Tuggerah Beach
Coastal Hazard Planning Lines and Hazard Zones



Legend

- | | |
|--|-------------------------------------|
| — Immediate Coastal Hazard Planning Line | — Combined Bluff. Beach & Dune Zone |
| — 2050 Coastal Hazard Planning Line | — Geotechnical Hazard Zone |
| — 2100 Coastal Hazard Planning Line | — A SMEC Area of advice |
| | — B SCE Area of advice |

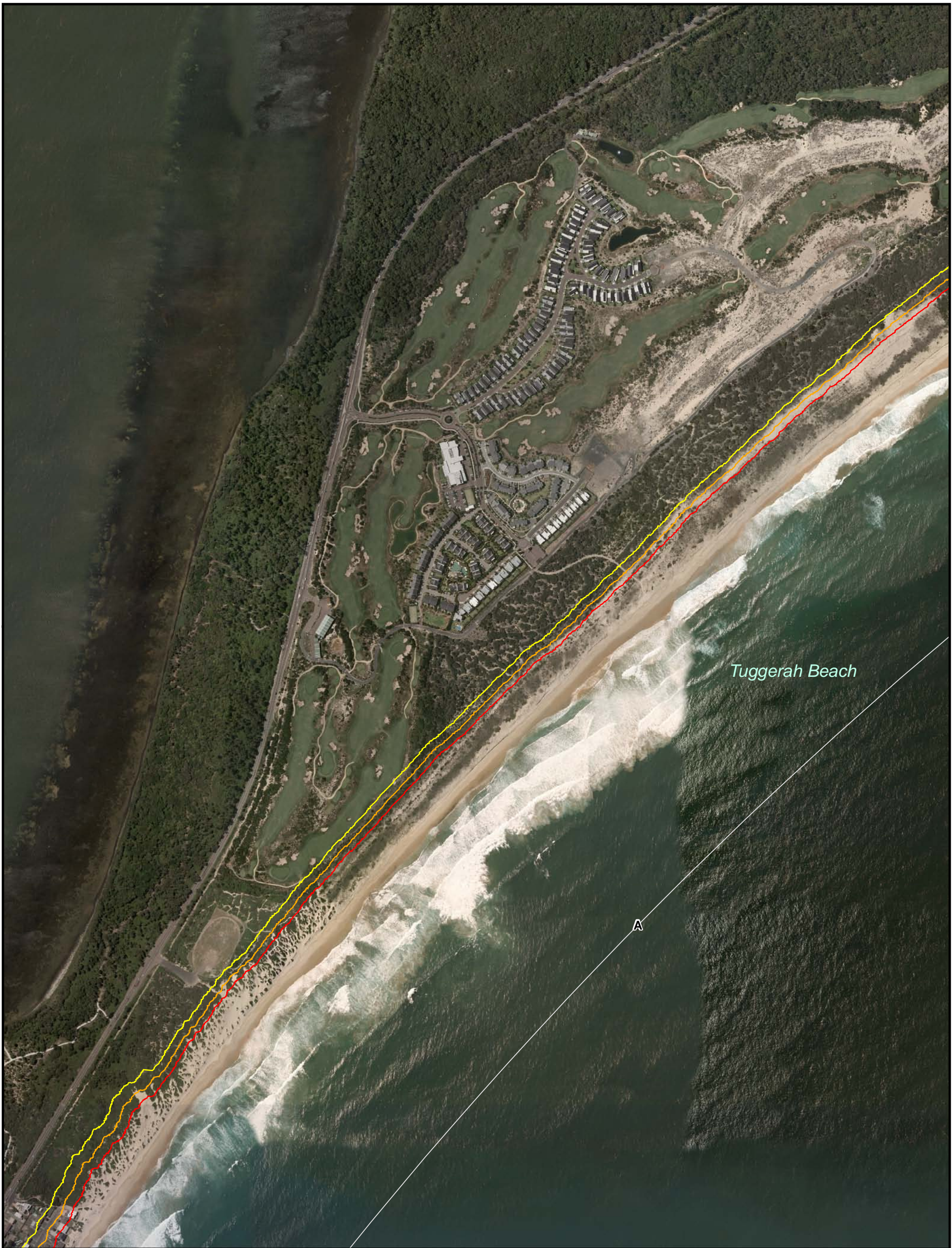
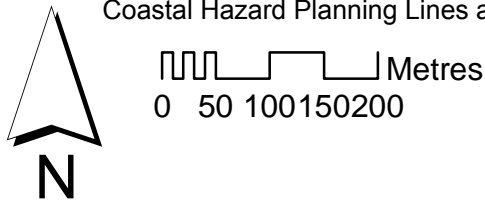


Figure 3.7
Tuggerah Beach
Coastal Hazard Planning Lines and Hazard Zones



Legend

- | | |
|--|-------------------------------------|
| — Immediate Coastal Hazard Planning Line | — Combined Bluff, Beach & Dune Zone |
| — 2050 Coastal Hazard Planning Line | — Geotechnical Hazard Zone |
| — 2100 Coastal Hazard Planning Line | — A SMEC Area of advice |
| | — B SCE Area of advice |



Figure 3.8
North Entrance Beach
Coastal Hazard Planning Lines and Hazard Zones



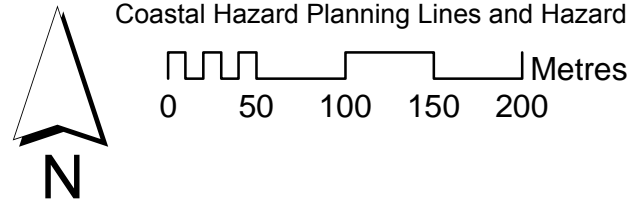
0 50 100 150 200 Metres

Legend

- Immediate Coastal Hazard Planning Line
- 2050 Coastal Hazard Planning Line
- 2100 Coastal Hazard Planning Line
- Combined Bluff, Beach & Dune Zone
- Geotechnical Hazard Zone
- A SMEC Area of advice
- B SCE Area of advice



Figure 3.9
The Entrance Channel
Coastal Hazard Planning Lines and Hazard Zones

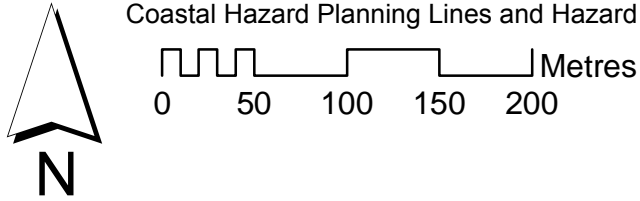


Legend

- | | |
|--|-------------------------------------|
| — Immediate Coastal Hazard Planning Line | — Combined Bluff. Beach & Dune Zone |
| — 2050 Coastal Hazard Planning Line | — Geotechnical Hazard Zone |
| — 2100 Coastal Hazard Planning Line | — A SMEC Area of advice |
| | — B SCE Area of advice |



Figure 3.10
Blue Bay, Toowoon Bay & Little Bay
Coastal Hazard Planning Lines and Hazard Zones



Legend

- | | |
|--|-------------------------------------|
| — Immediate Coastal Hazard Planning Line | — Combined Bluff. Beach & Dune Zone |
| — 2050 Coastal Hazard Planning Line | — Geotechnical Hazard Zone |
| — 2100 Coastal Hazard Planning Line | — A SMEC Area of advice |
| | — B SCE Area of advice |



Figure 3.11
Shelly Beach & Blue Lagoon
Coastal Hazard Planning Lines and Hazard Zones



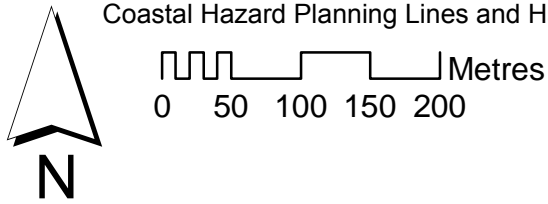
0 50 100 150 200 Metres

Legend

- Immediate Coastal Hazard Planning Line
- 2050 Coastal Hazard Planning Line
- 2100 Coastal Hazard Planning Line
- Combined Bluff, Beach & Dune Zone
- Geotechnical Hazard Zone
- A** SMEC Area of advice
- B** SCE Area of advice



Figure 3.12
Bateau Bay Beach & Crackneck Point
Coastal Hazard Planning Lines and Hazard Zones



Legend

- | | |
|--|-------------------------------------|
| — Immediate Coastal Hazard Planning Line | — Combined Bluff. Beach & Dune Zone |
| — 2050 Coastal Hazard Planning Line | — Geotechnical Hazard Zone |
| — 2100 Coastal Hazard Planning Line | — A SMEC Area of advice |
| | — B SCE Area of advice |

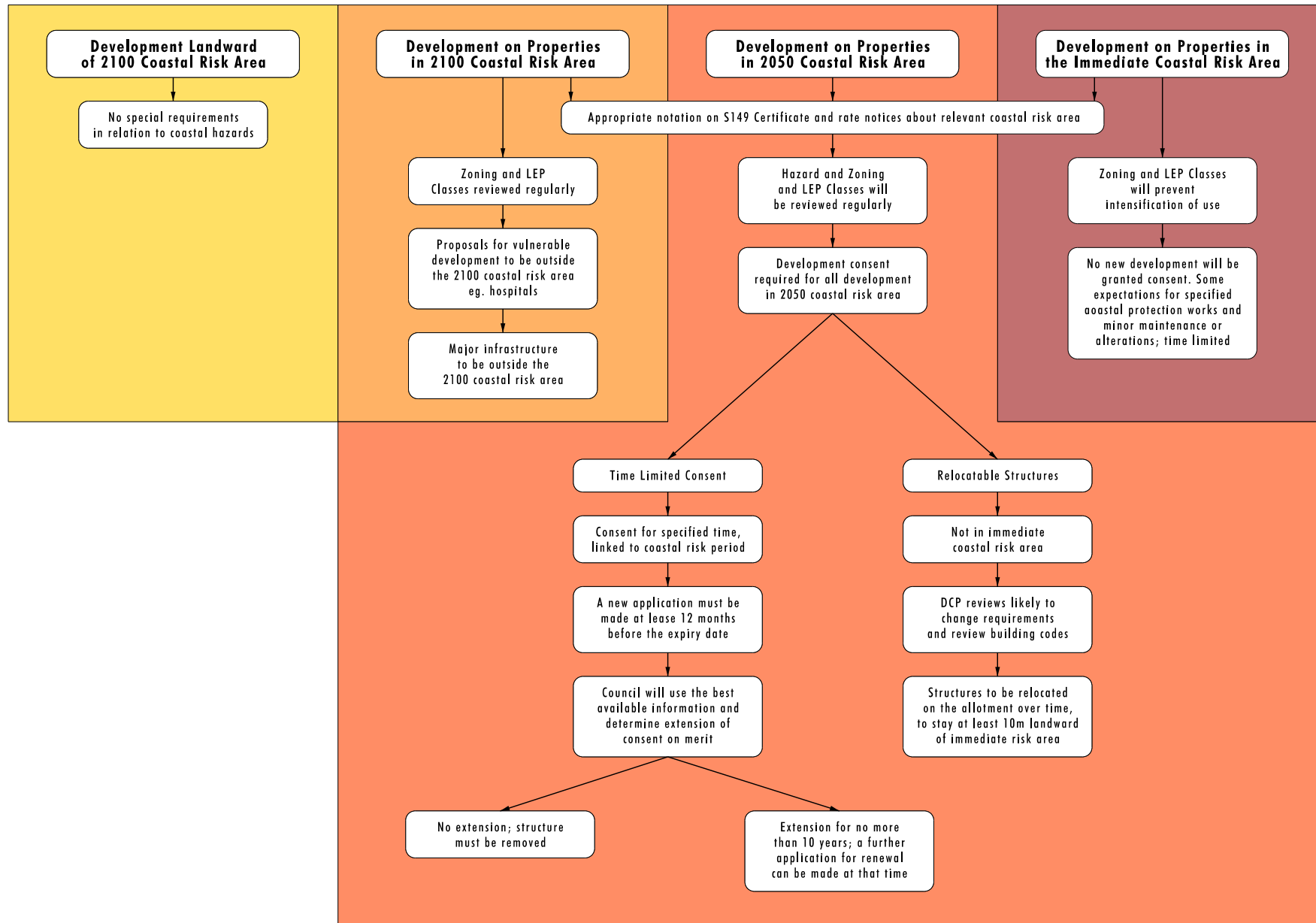


FIGURE 3.13

Consent Processes
for Coastal Risk Areas