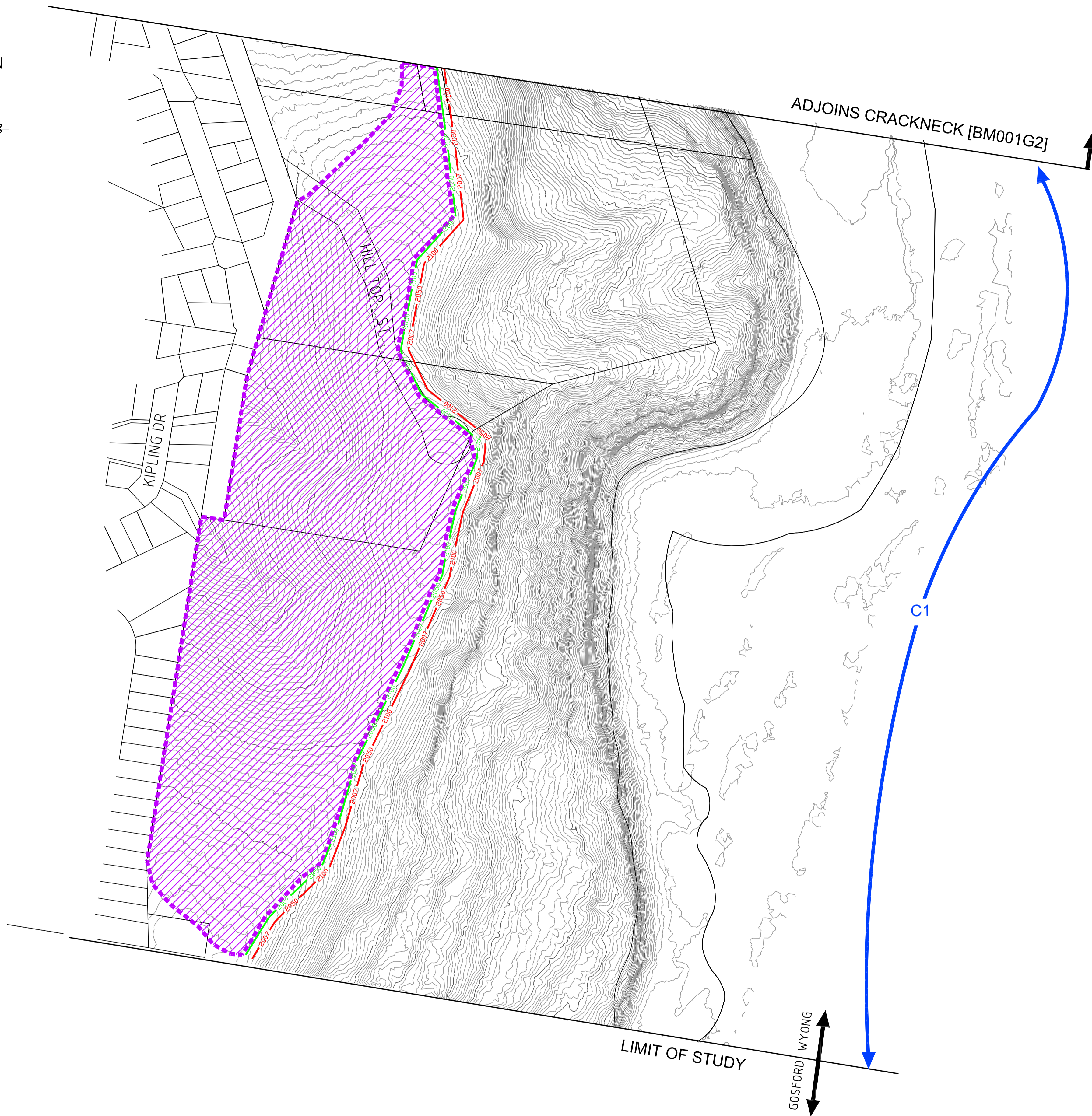
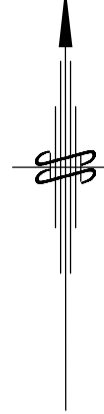




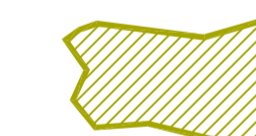


COPYRIGHT © 2010 - SHIRLEY CONSULTING ENGINEERS PTY LTD
 and shall not be used, reproduced or copied by any means, whatsoever, without express permission.

MN



MAP: MAP AREA : YUMBOOL POINT		
BLUFF AREA HAZARD LINES - 2007, 2050 AND 2100		
DRAWING NO: BM001G1	REVISION: D	DATE: 24-02-2010
METRES 0 10 20 30 40 50 100 150 SCALE 1: 2000 @ A1		

LEGEND

-  LOW HAZARD LINE
-  IMMEDIATE HIGH HAZARD LINE
-  SMEC AREA OF ADVICE
-  BLUFF RESSION HAZARD MECHANISM (REFER TO TABLE B2 IN REPORT)
-  GEOTECHNICAL HAZARD ZONE

NOTES:

1. AS THE BLUFF AREA HAZARD LINES ARE COINCIDENT FOR 2007, 2050 AND 2100, THERE ARE NO DRAWING NUMBERS BM001G101 AND BM001G201.
2. THE BOUNDARIES OF THE GEOTECHNICAL HAZARD ZONES ARE APPROXIMATE ONLY & SUBJECT TO DETAILED STUDIES & FIELD VERIFICATION.

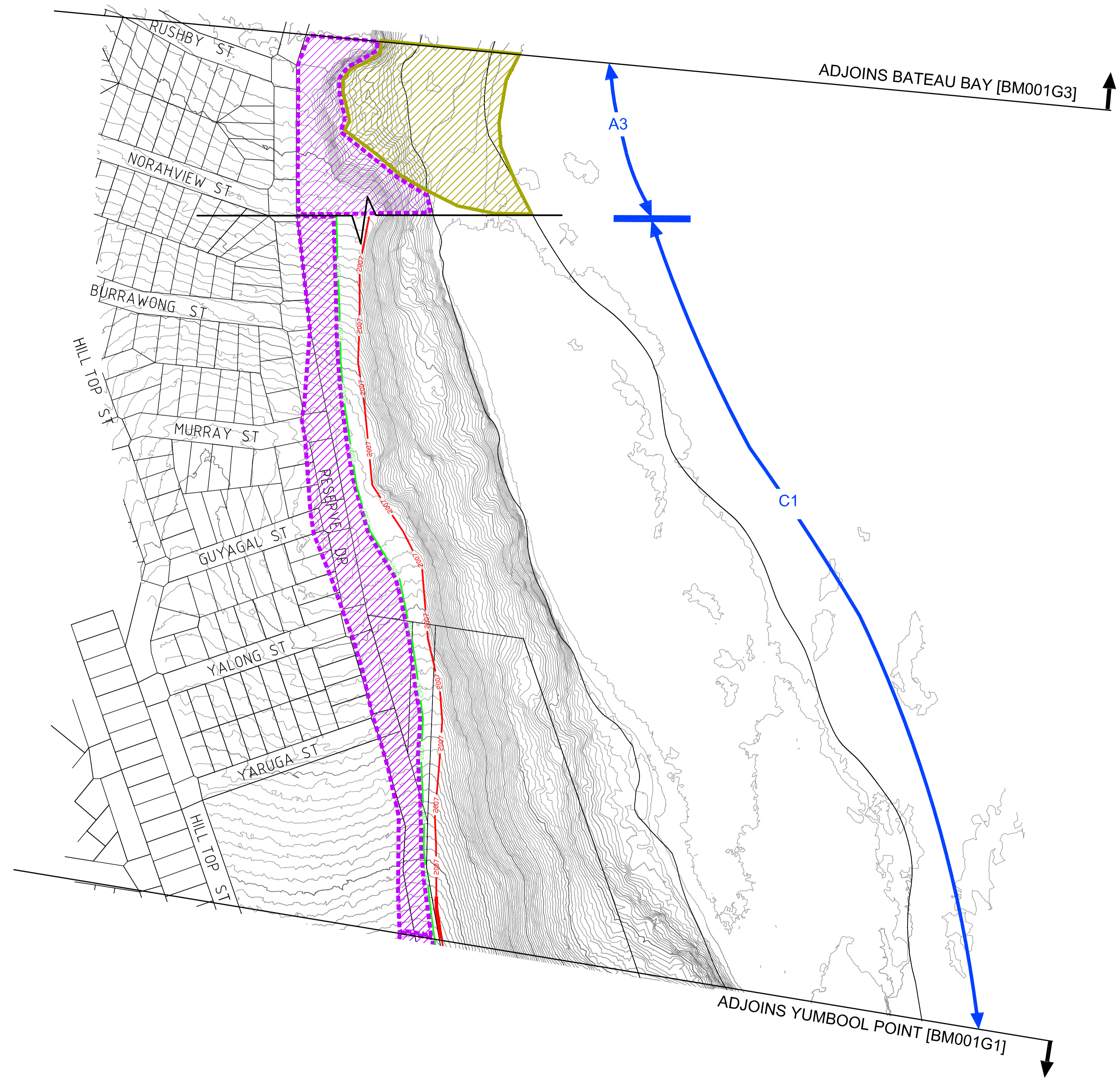
TITLE: COASTAL HAZARD MANAGEMENT STUDY WYONG SHIRE COUNCIL	
FIELDWORK: DPW / HM	This plan is to be read in conjunction with Shirley Consulting Engineers Pty Ltd Geotechnical Report No.
DRAWING: WH	RN20100406 \ BM001-5
 SHIRLEY CONSULTING ENGINEERS PTY LTD ABN 65 001 224 728 CONSULTING & FORENSIC ENGINEERS 895 PACIFIC HIGHWAY P.O. BOX 439 PYMBLE NSW 2073 PYMBLE NSW 2073 Ph (02) 9449 5577 Fax (02) 9449 5136	

COPYRIGHT © 2010 - SHIRLEY CONSULTING ENGINEERS PTY LTD
 All rights reserved. No part of this publication may be reproduced, stored in a retrieval system, or transmitted in any form or by any means, electronic, mechanical, photocopying, recording, or by any information storage and retrieval system, without express permission.

MAP AREA : CRACKNECK
BLUFF AREA HAZARD LINES - 2007

DRAWING NO: BM001G2	REVISION: D	DATE: 24-02-2010
-------------------------------	-----------------------	----------------------------

METRES 0 10 20 30 40 50 100 150 METRES
 SCALE 1: 2000 @ A1



LEGEND

- LOW HAZARD LINE
- IMMEDIATE HIGH HAZARD LINE
- SMEC AREA OF ADVICE
- C1 — BLUFF RESSION HAZARD MECHANISM (REFER TO TABLE B2 IN REPORT)
- GEO TECHNICAL HAZARD ZONE

NOTE:
 1. THE BOUNDARIES OF THE GEO TECHNICAL HAZARD ZONES ARE APPROXIMATE ONLY & SUBJECT TO DETAILED STUDIES & FIELD VERIFICATION.

TITLE:
COASTAL HAZARD MANAGEMENT STUDY
WYONG SHIRE COUNCIL

FIELDWORK: **DPW / HM**
 DRAWING: **WH**

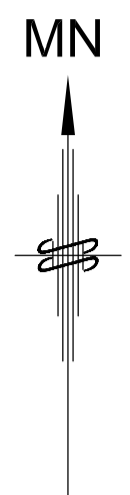
This plan is to be read in conjunction with Shirley Consulting Engineers Pty Ltd Geotechnical Report No. **RN20100406 \ BM001-5**

Shirley Consulting Engineers Pty Ltd
 895 PACIFIC HIGHWAY
 PYMBLE NSW 2073
 Ph (02) 9449 5577

P.O. BOX 439
 PYMBLE NSW 2073
 Fax (02) 9449 5136

Shirley Consulting Engineers Pty Ltd
 895 Pacific Highway
 Pymble NSW 2073
 Ph (02) 9449 5577

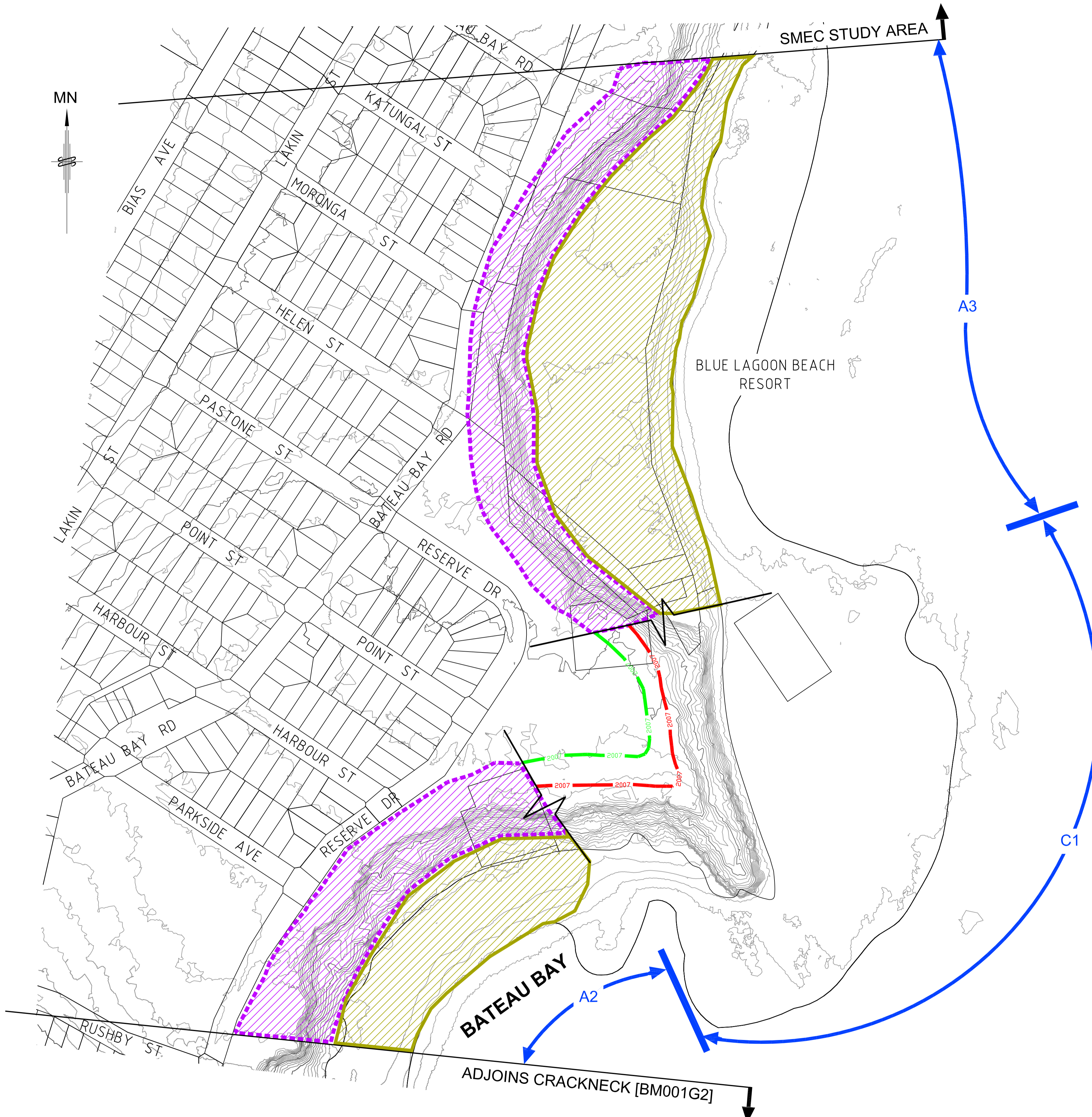
COPYRIGHT © 2010 - SHIRLEY CONSULTING ENGINEERS PTY LTD
 This drawing is the property of Shirley Consulting Engineers Pty Ltd
 and shall not be used, reproduced or copied by any means, whatsoever, without express permission.



MAP:
MAP AREA : BATEAU BAY
BLUFF AREA HAZARD LINES - 2007

DRAWING NO: BM001G3	REVISION: D	DATE: 24-02-2010
-------------------------------	-----------------------	----------------------------

METRES 0 10 20 30 40 50 100 150 METRES
 SCALE 1: 2000 @ A1



LEGEND

- LOW HAZARD LINE
- IMMEDIATE HIGH HAZARD LINE
- SMEC AREA OF ADVICE
- C1 — BLUFF RESSION HAZARD MECHANISM (REFER TO TABLE B2 IN REPORT)
- GEOTECHNICAL HAZARD ZONE

NOTE:

1. THE BOUNDARIES OF THE GEOTECHNICAL HAZARD ZONES ARE APPROXIMATE ONLY & SUBJECT TO DETAILED STUDIES & FIELD VERIFICATION.

TITLE:
COASTAL HAZARD MANAGEMENT STUDY
WYONG SHIRE COUNCIL

This plan is to be read in conjunction with Shirley Consulting Engineers Pty Ltd Geotechnical Report No.

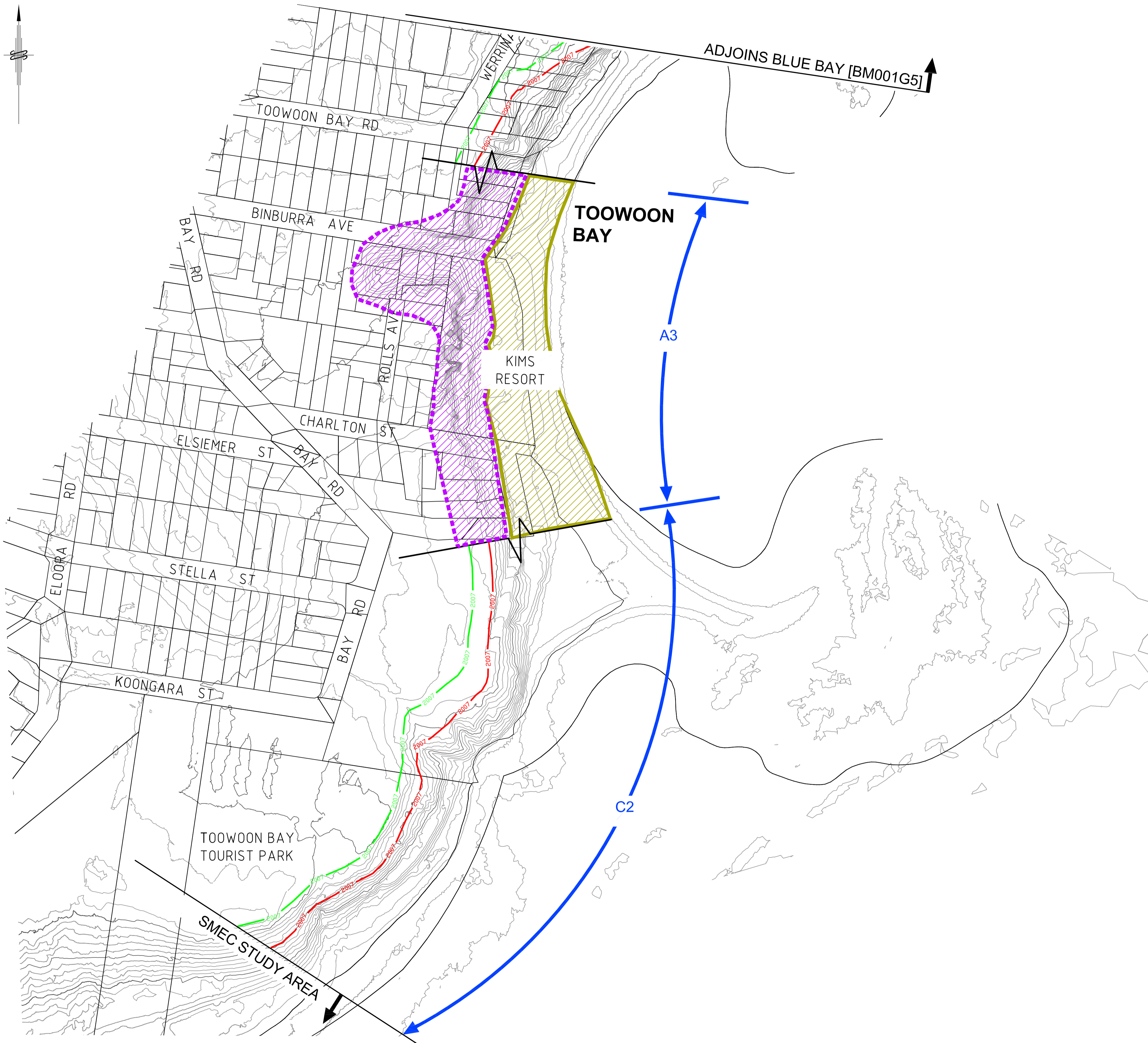
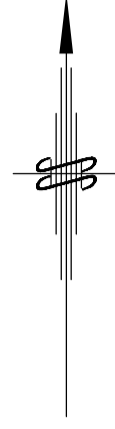
FIELDWORK: DPW / HM DRAWING: WH	RN20100406 \ BM001-5 <small> Liability is limited by the Engineering & Technical Engineers Schedule, approved under the Professional Engineers Act 1998 (NSW) </small>
--	---

SHIRLEY CONSULTING ENGINEERS
 PTY LTD ABN 65 001 224 728
 CONSULTING & FORENSIC ENGINEERS
 895 PACIFIC HIGHWAY PYMBLE NSW 2073
 Ph (02) 9449 5577

P.O. BOX 439
 PYMBLE NSW 2073
 Fax (02) 9449 5136



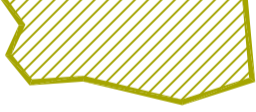

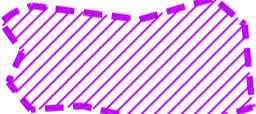
COPYRIGHT © 2010 - SHIRLEY CONSULTING ENGINEERS PTY LTD
 This drawing is the property of Shirley Consulting Engineers Pty Ltd and shall not be used, reproduced or copied by any means whatsoever without express permission.

MN



MAP: MAP AREA : TOOWOON BAY BLUFF AREA HAZARD LINES - 2007		
DRAWING NO: BM001G4	REVISION: D	DATE: 24-02-2010
METRES 0 10 20 30 40 50 100 150 METRES SCALE 1:2000 @ A1		

LEGEND

-  LOW HAZARD LINE
-  IMMEDIATE HIGH HAZARD LINE
-  SMEC AREA OF ADVICE
-  C1 BLUFF RESSION HAZARD MECHANISM (REFER TO TABLE B2 IN REPORT)
-  GEOTECHNICAL HAZARD ZONE

NOTE:
 1. THE BOUNDARIES OF THE GEOTECHNICAL HAZARD ZONES ARE APPROXIMATE ONLY & SUBJECT TO DETAILED STUDIES & FIELD VERIFICATION.

TITLE:
COASTAL HAZARD MANAGEMENT STUDY
WYONG SHIRE COUNCIL


FIELDWORK:
 DPW / HM
 WH

This plan is to be read in conjunction with Shirley Consulting Engineers Pty Ltd Geotechnical Report No. **RN20100406 \ BM001-5**

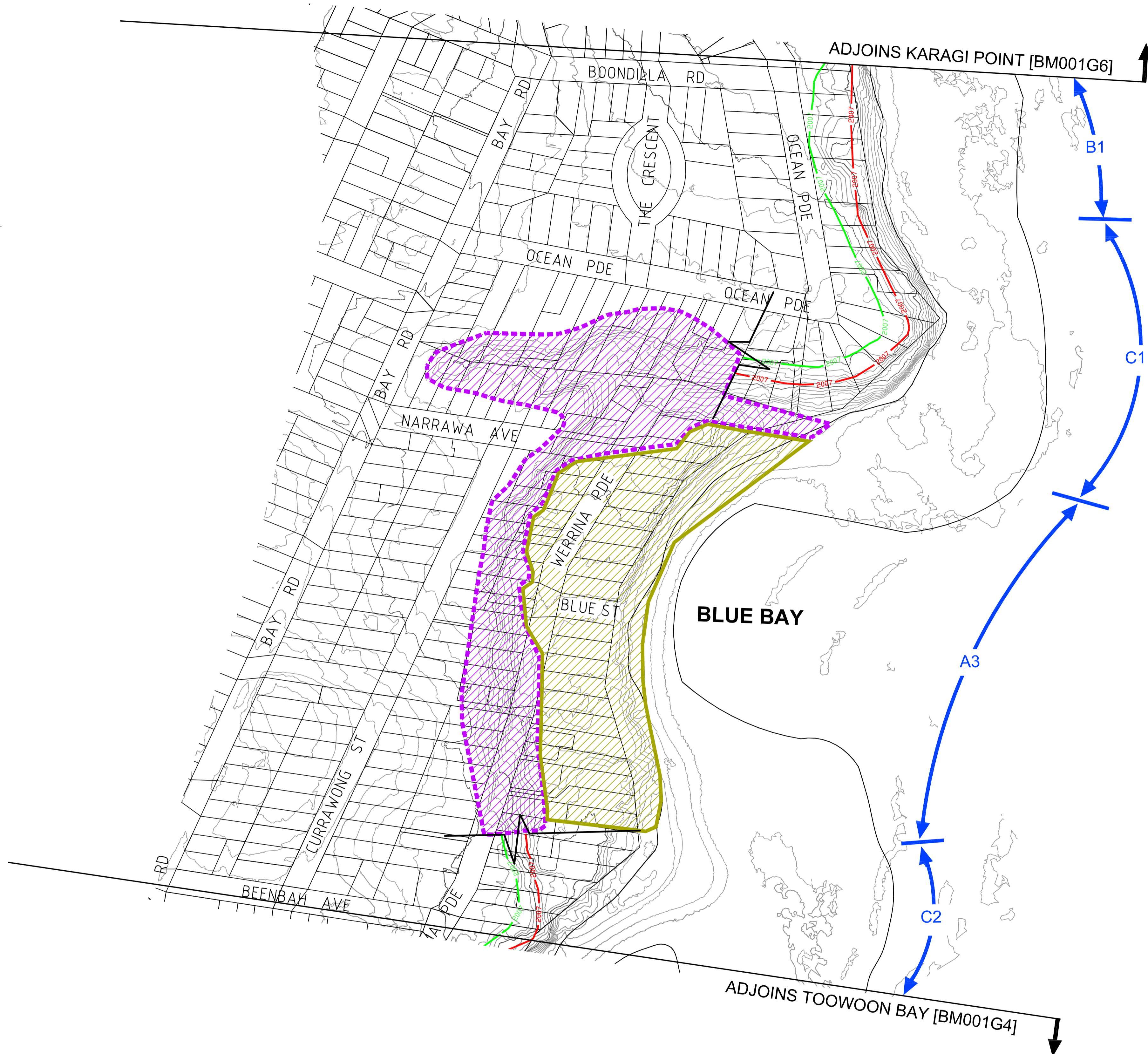
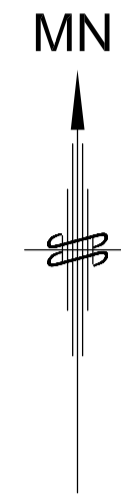
Liability is limited by the Engineering & Technical Engineers Schedule, endorsed under the Professional Standards Act 1994 (NSW).

SHIRLEY CONSULTING ENGINEERS
 PTY LTD ABN 65 001 224 728
 CONSULTING & FORENSIC ENGINEERS

895 PACIFIC HIGHWAY PYMBLE NSW 2073 Ph (02) 9449 5577
 P.O. BOX 439 PYMBLE NSW 2073 Fax (02) 9449 5136




COPYRIGHT © 2010 - SHIRLEY CONSULTING ENGINEERS PTY LTD
 All rights reserved. No part of this drawing may be reproduced, stored in a retrieval system, or transmitted in any form or by any means, without express permission.



MAP: MAP AREA : BLUE BAY		
BLUFF AREA HAZARD LINES - 2007		
DRAWING NO: BM001G5	REVISION: D	DATE: 24-02-2010
METRES 0 10 20 30 40 50 100 150 METRES SCALE 1:2000 @ A1		

LEGEND

- LOW HAZARD LINE
- IMMEDIATE HIGH HAZARD LINE
- SMEC AREA OF ADVICE
- BLUFF RESSION HAZARD MECHANISM (REFER TO TABLE B2 IN REPORT)
- GEOTECHNICAL HAZARD ZONE

NOTE:
 1. THE BOUNDARIES OF THE GEOTECHNICAL HAZARD ZONES ARE APPROXIMATE ONLY & SUBJECT TO DETAILED STUDIES & FIELD VERIFICATION.

TITLE:
COASTAL HAZARD MANAGEMENT STUDY
WYONG SHIRE COUNCIL

FIELDWORK: DPW / HM
DRAWING: WH

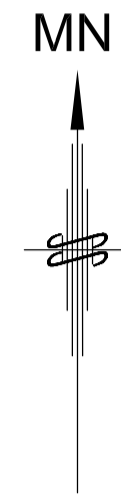
This plan is to be read in conjunction with Shirley Consulting Engineers Pty Ltd Geotechnical Report No. **RN20100406 \ BM001-5**

Liability is limited by the Engineering & Forensic Engineers Schedule, approved under the Professional Engineers Act 1994 (NSW).

SHIRLEY CONSULTING ENGINEERS
 PTY LTD ABN 65 001 224 728
 CONSULTING & FORENSIC ENGINEERS

895 PACIFIC HIGHWAY PYMBLE NSW 2073 Ph (02) 9449 5577
 P.O. BOX 439 PYMBLE NSW 2073 Fax (02) 9449 5136

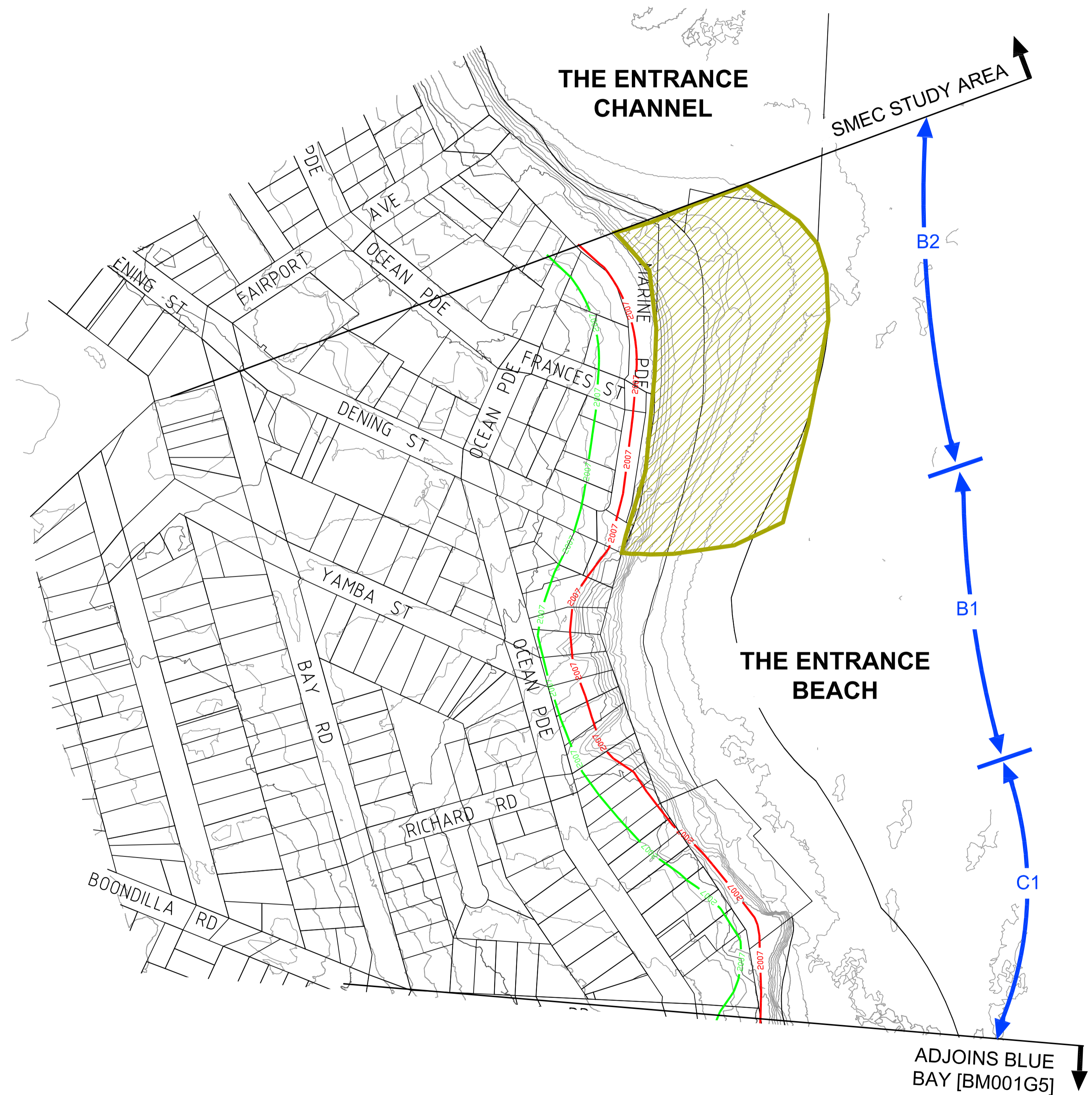
COPYRIGHT © 2010 - SHIRLEY CONSULTING ENGINEERS PTY LTD
 This plan is to be read in conjunction with Shirley Consulting Engineers Pty Ltd Geotechnical Report No. RN20100406 \ BM001-5
 and shall not be used, reproduced or copied by any means whatsoever without express permission.



MAP:
MAP AREA : KARAGI POINT
BLUFF AREA HAZARD LINES - 2007

DRAWING NO: BM001G6	REVISION: D	DATE: 24-02-2010
-------------------------------	-----------------------	----------------------------

METRES 0 10 20 30 40 50 100 150 METRES
 SCALE 1: 2000 @ A1



LEGEND

- LOW HAZARD LINE
- IMMEDIATE HIGH HAZARD LINE
- SMEC AREA OF ADVICE
- BLUFF RESSION HAZARD MECHANISM (REFER TO TABLE B2 IN REPORT)
- GEOTECHNICAL HAZARD ZONE

NOTE:
 1. THE BOUNDARIES OF THE GEOTECHNICAL HAZARD ZONES ARE APPROXIMATE ONLY & SUBJECT TO DETAILED STUDIES & FIELD VERIFICATION.

TITLE:
COASTAL HAZARD MANAGEMENT STUDY
WYONG SHIRE COUNCIL

FIELDWORK: DPW / HM	This plan is to be read in conjunction with Shirley Consulting Engineers Pty Ltd Geotechnical Report No.	Liability is limited by the Engineering & Technical Engineers Schedule, approved under the Professional Engineers Act 1994 (NSW).
DRAWING: WH	RN20100406 \ BM001-5	

SHIRLEY CONSULTING ENGINEERS
 PTY LTD ABN 65 001 224 728
 CONSULTING & FORENSIC ENGINEERS

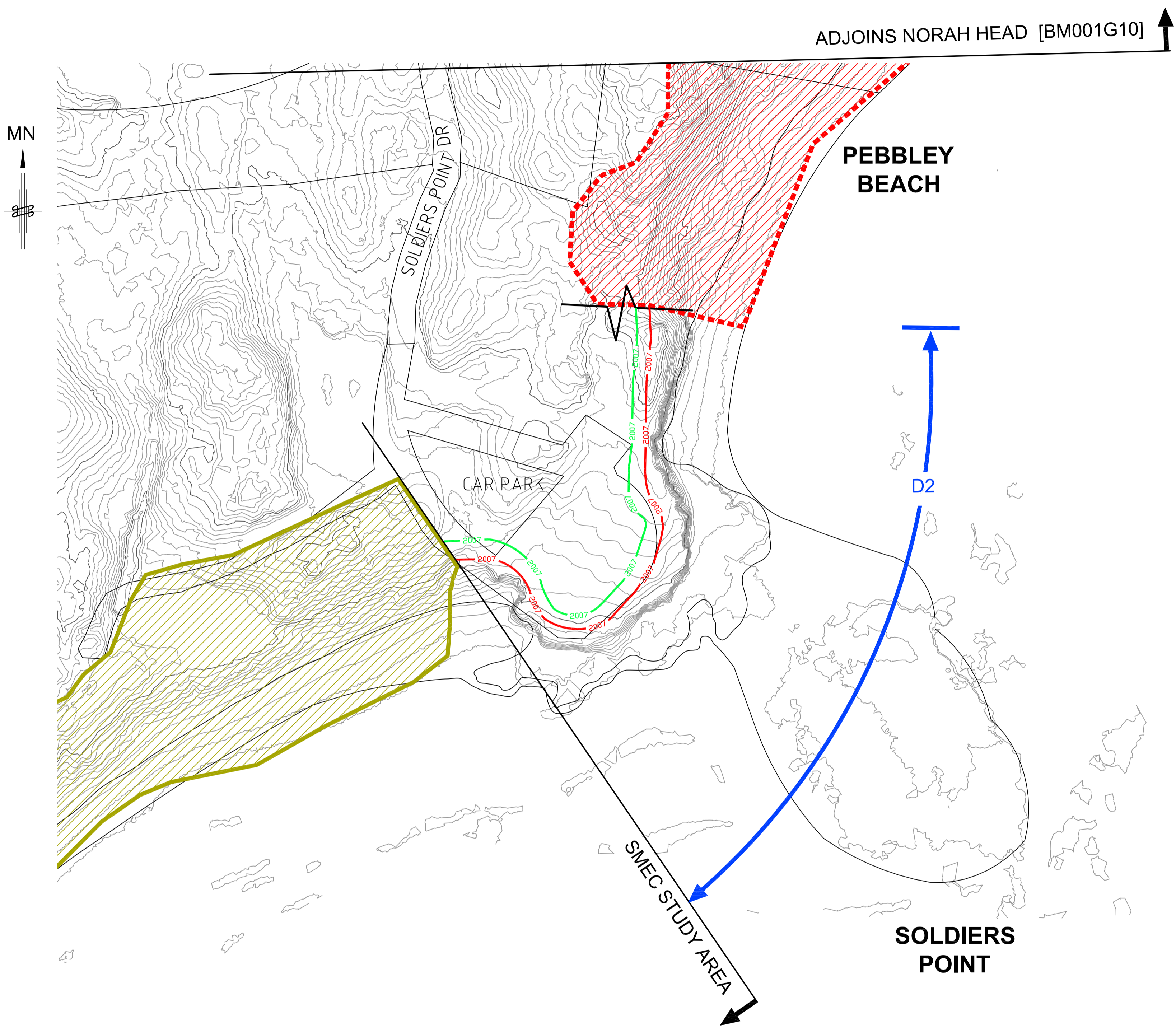
895 PACIFIC HIGHWAY PYMBLE NSW 2073 Ph (02) 9449 5577
 P.O. BOX 439 PYMBLE NSW 2073 Fax (02) 9449 5136

COPYRIGHT © 2010 - SHIRLEY CONSULTING ENGINEERS PTY LTD
 All rights reserved. No part of this publication may be reproduced, stored in a retrieval system, or transmitted in any form or by any means, electronic, mechanical, photocopying, recording, or by any information storage and retrieval system, without express permission.

MAP:
MAP AREA : SOLDIERS POINT
BLUFF AREA HAZARD LINES - 2007

DRAWING NO: BM001G9	REVISION: D	DATE: 24-02-2010
-------------------------------	-----------------------	----------------------------

METRES 0 10 20 30 40 50 100 150
 SCALE 1:2000 @ A1



LEGEND

- LOW HAZARD LINE
- IMMEDIATE HIGH HAZARD LINE
- SMEC AREA OF ADVICE
- C1 — BLUFF RESSION HAZARD MECHANISM (REFER TO TABLE B2 IN REPORT)
- GEOTECHNICAL HAZARD ZONE
- COMBINED BLUFF / BEACH / DUNE ZONE

NOTE:

- THE BOUNDARIES OF THE GEOTECHNICAL HAZARD ZONES ARE APPROXIMATE ONLY & SUBJECT TO DETAILED STUDIES & FIELD VERIFICATION.
- THE BOUNDARIES OF THE COMBINED BLUFF / BEACH / DUNE ZONE REQUIRES SPECIALIST AND DETAILED STUDIES TO DETERMINE HAZARD LINES.

TITLE:
COASTAL HAZARD MANAGEMENT STUDY
WYONG SHIRE COUNCIL

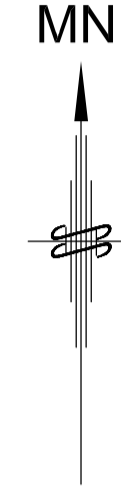
FIELDWORK: DPW / HM
DRAWN: WH
 This plan is to be read in conjunction with Shirley Consulting Engineers Pty Ltd Geotechnical Report No. RN20100406 \ BM001-5

Liability is limited by the Engineers & Forensic Engineers Act 2003, s. 139A (1)(a)

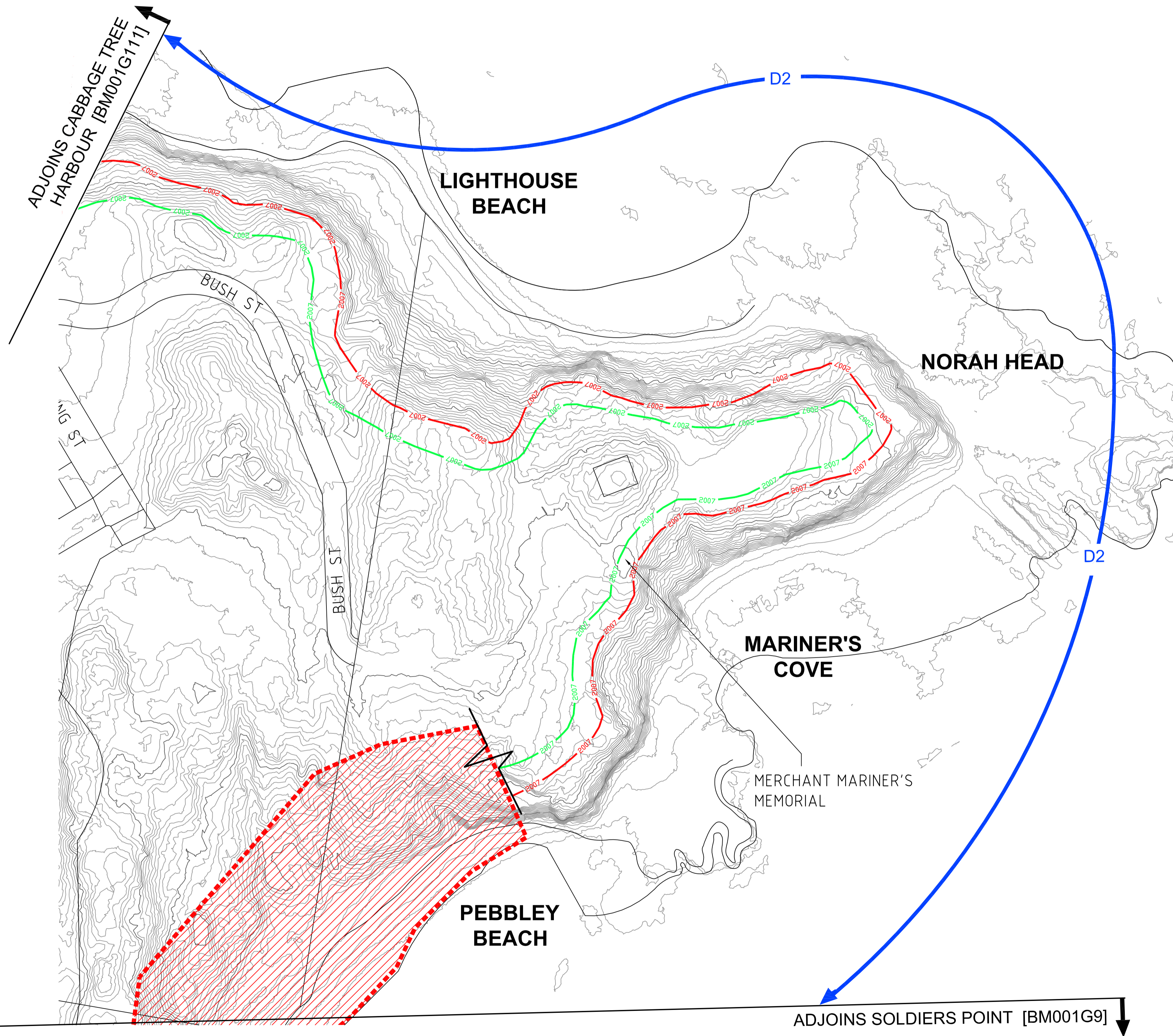
SHIRLEY CONSULTING ENGINEERS
 PTY LTD ABN 65 001 224 728
 CONSULTING & FORENSIC ENGINEERS
 895 PACIFIC HIGHWAY PYMBLE NSW 2073
 Ph (02) 9449 5577

P.O. BOX 439 PYMBLE NSW 2073
 Fax (02) 9449 5136



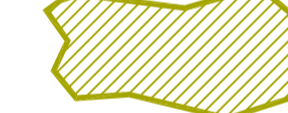

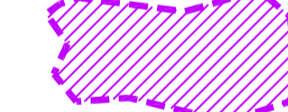
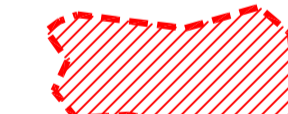
ENGINEERS
 AUSTRALIAN INSTITUTE OF PROFESSIONAL ENGINEERS



MAP: MAP AREA : NORAH HEAD		
BLUFF AREA HAZARD LINES - 2007		
DRAWING NO: BM001G10	REVISION: D	DATE: 24-02-2010
METRES 0 10 20 30 40 50 100 150 SCALE 1: 2000 @ A1		



LEGEND

-  LOW HAZARD LINE
-  IMMEDIATE HIGH HAZARD LINE
-  SMEC AREA OF ADVICE
-  BLUFF RECESSION HAZARD MECHANISM (REFER TO TABLE B2 IN REPORT)
-  GEOTECHNICAL HAZARD ZONE
-  COMBINED BLUFF / BEACH / DUNE ZONE

- NOTE:**
1. THE BOUNDARIES OF THE GEOTECHNICAL HAZARD ZONES ARE APPROXIMATE ONLY & SUBJECT TO DETAILED STUDIES & FIELD VERIFICATION.
 2. THE BOUNDARIES OF THE COMBINED BLUFF / BEACH / DUNE ZONE REQUIRES SPECIALIST AND DETAILED STUDIES TO DETERMINE HAZARD LINES.

TITLE:
COASTAL HAZARD MANAGEMENT STUDY
WYONG SHIRE COUNCIL

FIELDWORK:
 DPW / HM

DRAWN:
 WH

This plan is to be read in conjunction with Shirley Consulting Engineers Pty Ltd Geotechnical Report No. **RN20100406 \ BM001-5**

Liability is limited by the Engineering & Forensic Act 2008 (NSW) and the Professional Engineers Act 1996 (NSW)

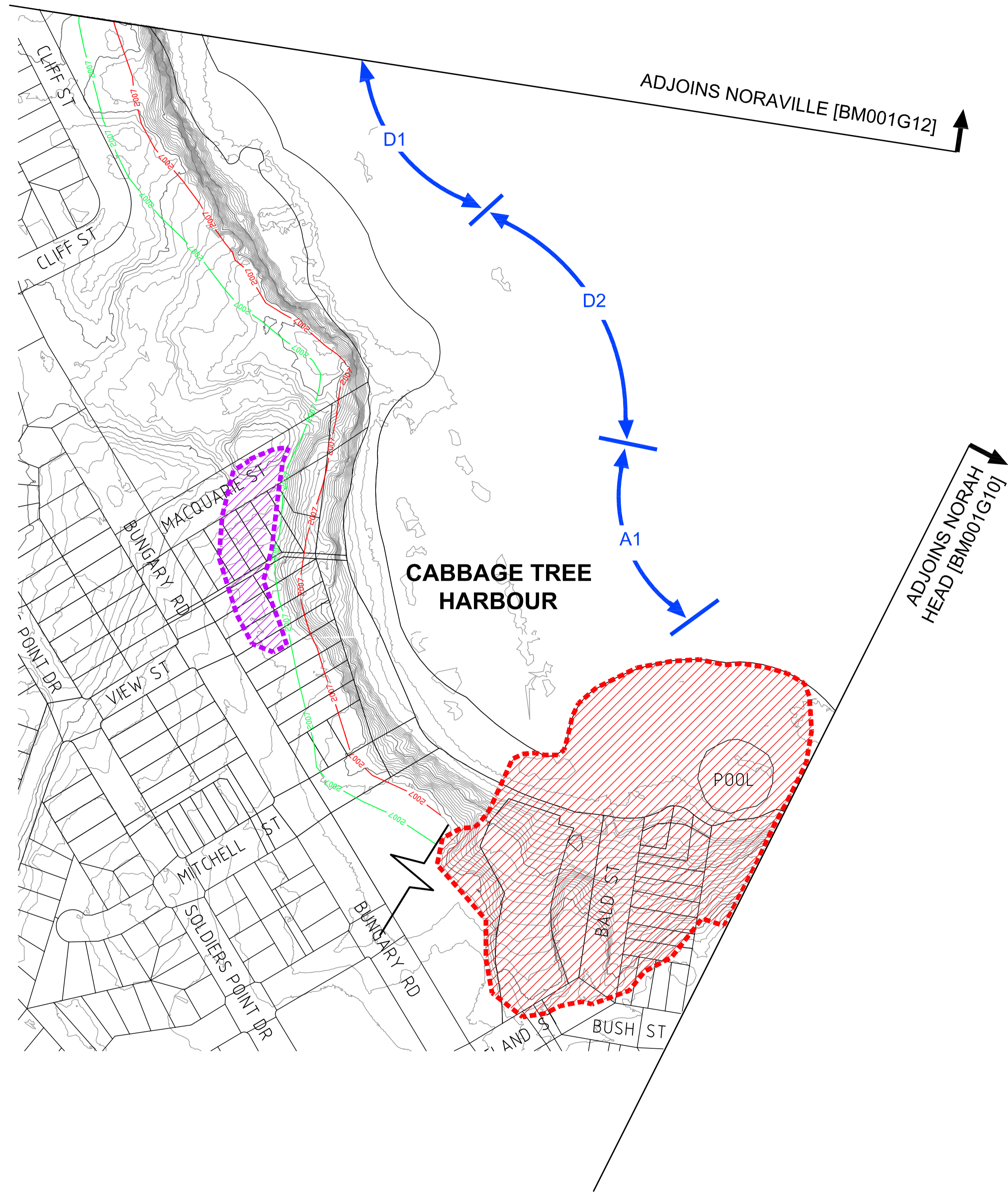
SHIRLEY CONSULTING ENGINEERS
 PTY LTD ABN 65 001 224 728
 CONSULTING & FORENSIC ENGINEERS

895 PACIFIC HIGHWAY PYMBLE NSW 2073
 Ph (02) 9449 5577

P.O. BOX 439 PYMBLE NSW 2073
 Fax (02) 9449 5136



COPYRIGHT © 2010 - SHIRLEY CONSULTING ENGINEERS PTY LTD
 All rights reserved. No part of this publication may be reproduced, stored in a retrieval system, or transmitted in any form or by any means, without express permission.



MAP:		
MAP AREA : CABBAGE TREE HARBOUR		
BLUFF AREA HAZARD LINES - 2007		
DRAWING NO:	REVISION:	DATE:
BM001G11	D	24-02-2010
METRES 0 10 20 30 40 50 100 150 SCALE 1: 2000 @ A1		

LEGEND

- LOW HAZARD LINE
- IMMEDIATE HIGH HAZARD LINE
- SMEC AREA OF ADVICE
- BLUFF RESSION HAZARD MECHANISM (REFER TO TABLE B2 IN REPORT)
- GEOTECHNICAL HAZARD ZONE
- COMBINED BLUFF / BEACH / DUNE ZONE

NOTE:

1. THE BOUNDARIES OF THE GEOTECHNICAL HAZARD ZONES ARE APPROXIMATE ONLY & SUBJECT TO DETAILED STUDIES & FIELD VERIFICATION.
2. THE BOUNDARIES OF THE COMBINED BLUFF / BEACH / DUNE ZONE REQUIRES SPECIALIST AND DETAILED STUDIES TO DETERMINE HAZARD LINES.

TITLE:
COASTAL HAZARD MANAGEMENT STUDY
WYONG SHIRE COUNCIL

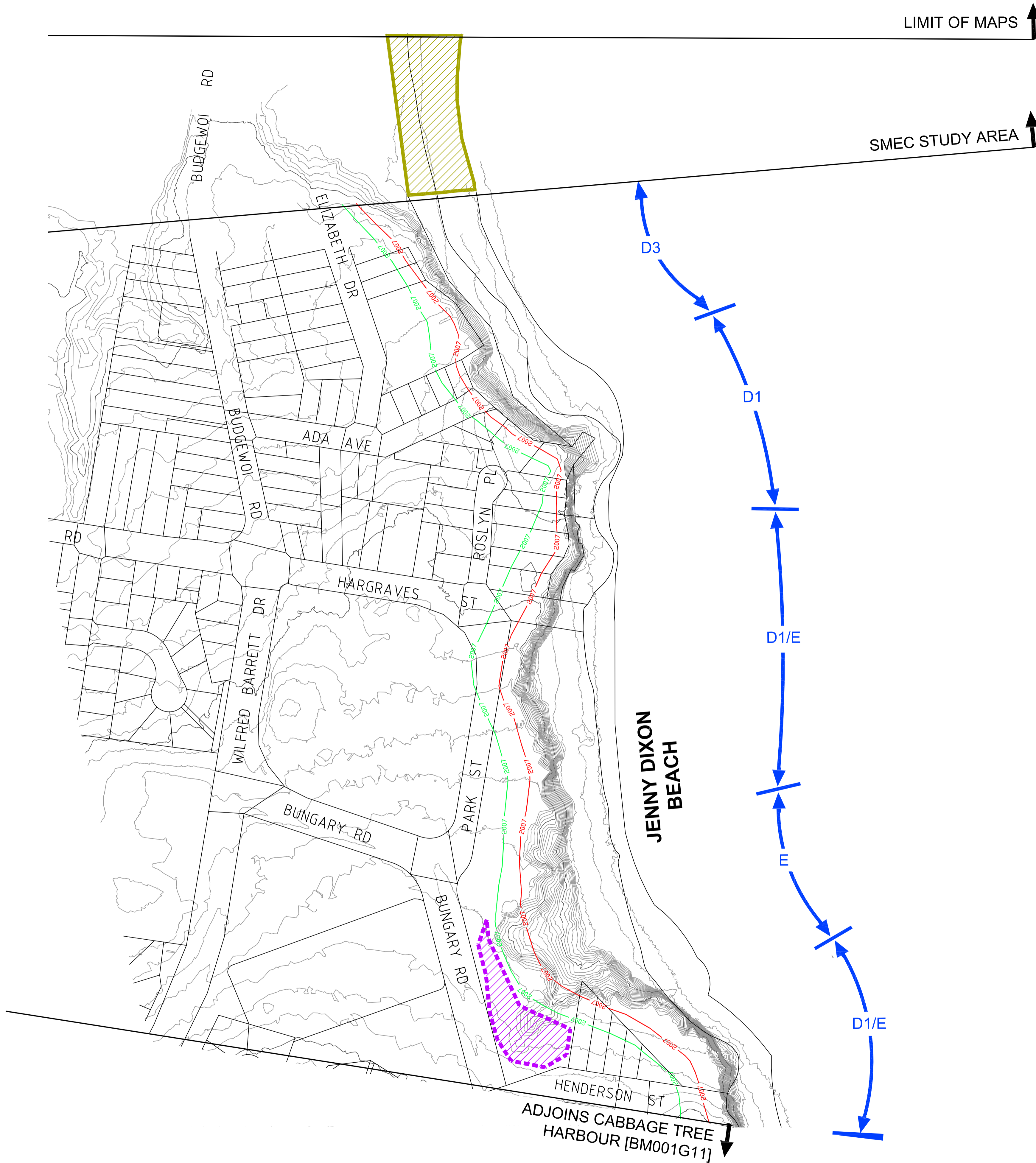
FIELDWORK: DPW / HM
DRAWN: WH

This plan is to be read in conjunction with Shirley Consulting Engineers Pty Ltd Geotechnical Report No. **RN20100406 \ BM001-5**

Liability is limited by the Engineering & Planning Ordinance, Section 139(1)(a) and (b) of the Professional Engineers Act 1996 (NSW)

SHIRLEY CONSULTING ENGINEERS
 PTY LTD ABN 65 001 224 728
 CONSULTING & FORENSIC ENGINEERS

895 PACIFIC HIGHWAY PYMBLE NSW 2073 Ph (02) 9449 5577
 P.O. BOX 439 PYMBLE NSW 2073 Fax (02) 9449 5136



MAP:		
MAP AREA : NORVILLE		
BLUFF AREA HAZARD LINES - 2007		
DRAWING NO:	REVISION:	DATE:
BM001G12	D	24-02-2010
METRES 0 10 20 30 40 50 100 150		
SCALE 1: 2000 @ A1		

LEGEND

	LOW HAZARD LINE
	IMMEDIATE HIGH HAZARD LINE
	SMEC AREA OF ADVICE
	BLUFF RESSION HAZARD MECHANISM (REFER TO TABLE B2 IN REPORT1)
	GEOTECHNICAL HAZARD ZONE

NOTE:
 1. THE BOUNDARIES OF THE GEOTECHNICAL HAZARD ZONES ARE APPROXIMATE ONLY & SUBJECT TO DETAILED STUDIES & FIELD VERIFICATION.

TITLE:
COASTAL HAZARD MANAGEMENT STUDY
WYONG SHIRE COUNCIL

FIELDWORK: DPW / HM
DRAWN: WH

This plan is to be read in conjunction with Shirley Consulting Engineers Pty Ltd Geotechnical Report No. **RN20100406 \ BM001-5**

Liability is limited to the Investigation & Remedial Options, Studies, prepared pursuant to Act 1989 (Que).
SHIRLEY CONSULTING ENGINEERS
 PTY LTD ABN 65 001 224 728
 CONSULTING & FORENSIC ENGINEERS
 895 PACIFIC HIGHWAY PYMBLE NSW 2073
 Ph (02) 9449 5577 P.O. BOX 439 PYMBLE NSW 2073
 Fax (02) 9449 5136