

MN



ADJOINS BATEAU BAY [BM001G103]

ADJOINS YUMBOOL POINT [BM001G1]

MAP AREA : CRACKNECK		
BLUFF AREA HAZARD LINES - 2050		
DRAWING NO: BM001G102	REVISION: B	DATE: 09-03-2010
METRES 0 10 20 30 40 50 100 150 METRES		
SCALE 1 : 2000 @ A1		

LEGEND

- LOW HAZARD LINE
- IMMEDIATE HIGH HAZARD LINE

TITLE:
COASTAL HAZARD MANAGEMENT STUDY
WYONG SHIRE COUNCIL

FELLOWSHIP:
DPW / HM
WH

This plan is to be read in conjunction with Shirley Consulting Engineers Pty Ltd Geotechnical Report No. **RN20100406 \ BM001-5**

SHIRLEY CONSULTING ENGINEERS
PTY LTD ABN 65 001 224 728
CONSULTING & FORENSIC ENGINEERS
805 PACIFIC HIGHWAY P.O. BOX 439
PYMBLE NSW 2073 PYMBLE NSW 2073
Ph (02) 9449 5577 Fax (02) 9449 5135

MN



SMEC STUDY AREA

MAP AREA : BATEAU BAY
BLUFF AREA HAZARD LINES - 2050

DRAWING NO: BM001G103	REVISION: B	DATE: 09-03-2010
---------------------------------	-----------------------	----------------------------

METRES 0 10 20 30 40 50 100 150 METRES
SCALE 1:2000 @ A1



BLUE LAGOON BEACH RESORT

BATEAU BAY

ADJOINS CRACKNECK [BM001G102]

LEGEND

- LOW HAZARD LINE
- IMMEDIATE HIGH HAZARD LINE

TITLE:
COASTAL HAZARD MANAGEMENT STUDY
WYONG SHIRE COUNCIL

FIELDWORK:
DPW / HM
WH

This plan is to be read in conjunction with Shirley Consulting Engineers Pty Ltd Geotechnical Report No. **RN20100406 \ BM001-5**

Shirley Consulting Engineers Pty Ltd ABN 65 001 224 728
CONSULTING & FORENSIC ENGINEERS
805 PACIFIC HIGHWAY PYMBLE NSW 2073
Ph (02) 9449 5577

P.O. BOX 439 PYMBLE NSW 2073
Fax (02) 9449 5136



MN



MAP AREA : TOOWOON BAY		
BLUFF AREA HAZARD LINES - 2050		
DRAWING NO: BM001G104	REVISION: B	DATE: 09-03-2010
<p>SCALE 1:2000 @ A1</p>		



LEGEND

- LOW HAZARD LINE
- IMMEDIATE HIGH HAZARD LINE

TITLE: COASTAL HAZARD MANAGEMENT STUDY WYONG SHIRE COUNCIL	
FIELDWORK: DPW / HM	This plan is to be read in conjunction with Shirley Consulting Engineers Pty Ltd Geotechnical Report No.
DRAWN: WH	RN20100406 BM001-5
SHIRLEY CONSULTING ENGINEERS PTY LTD ABN 65 001 224 728 CONSULTING & FORENSIC ENGINEERS 805 PACIFIC HIGHWAY P.O. BOX 439 PYMBLE NSW 2073 PYMBLE NSW 2073 Ph (02) 9449 5577 Fax (02) 9449 5135	

MAP AREA : BLUE BAY
BLUFF AREA HAZARD LINES - 2050

DRAWING NO: BM001G105	REVISION: B	DATE: 09-03-2010
---------------------------------	-----------------------	----------------------------

METRES 0 10 20 30 40 50 100 150 METRES
SCALE 1:2000 @ A1



LEGEND

- LOW HAZARD LINE
- IMMEDIATE HIGH HAZARD LINE

TITLE:
COASTAL HAZARD MANAGEMENT STUDY
WYONG SHIRE COUNCIL

FIELDWORK: DPW / HM
DRAWN: WH

This plan is to be read in conjunction with Shirley Consulting Engineers Pty Ltd Geotechnical Report No. **RN20100406 \ BM001-5**

SHIRLEY CONSULTING ENGINEERS
PTY LTD ABN 65 001 224 728
CONSULTING & FORENSIC ENGINEERS

805 PACIFIC HIGHWAY P.O. BOX 439
PYMBLE NSW 2073 PYMBLE NSW 2073
Ph (02) 9449 5577 Fax (02) 9449 5130



LEGEND

— LOW HAZARD LINE

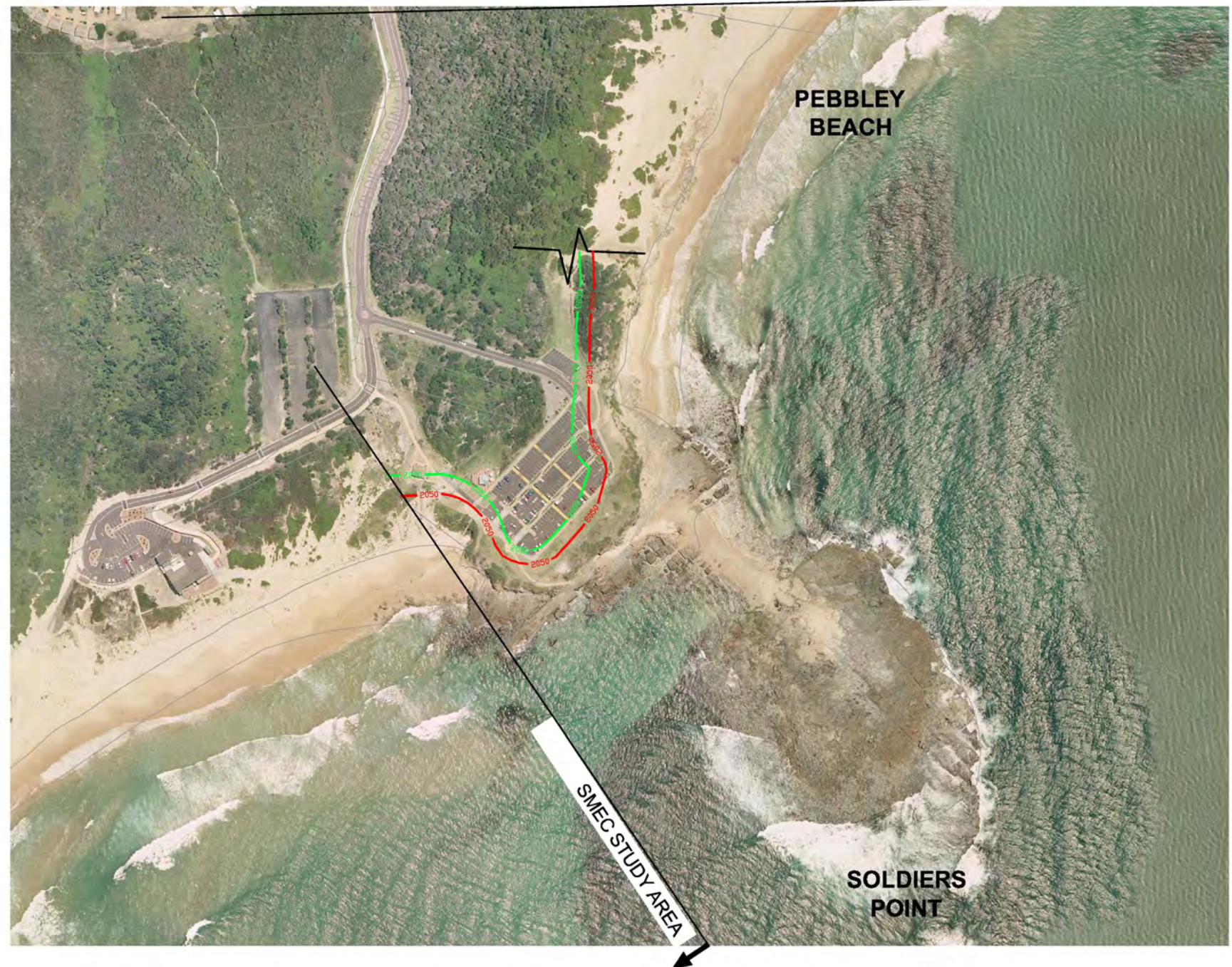
— IMMEDIATE HIGH HAZARD LINE

MAP AREA : SOLDIERS POINT
BLUFF AREA HAZARD LINES - 2050

DRAWING NO: BM001G109	REVISION: B	DATE: 09-03-2010
---------------------------------	-----------------------	----------------------------

METRES 0 10 20 30 40 50 100 150 METRES
SCALE 1:2000 @ A1

ADJOINS NORAH HEAD [BM001G110] ↑



LEGEND

- LOW HAZARD LINE
- IMMEDIATE HIGH HAZARD LINE

TITLE:
COASTAL HAZARD MANAGEMENT STUDY
WYONG SHIRE COUNCIL

FIELDWORK:
DPW / HM
WH

This plan is to be read in conjunction with Shirley Consulting Engineers Pty Ltd Geotechnical Report No. **RN20100406 \ BM001-5**

SHIRLEY CONSULTING ENGINEERS
PTY LTD ABN 85 001 224 728
CONSULTING & FORENSIC ENGINEERS
805 PACIFIC HIGHWAY P.O. BOX 439
PYMBLE NSW 2073 PYMBLE NSW 2073
Ph (02) 9449 5577 Fax (02) 9449 5135



ADJOINS CABBAGE TREE HARBOUR [BM001G111]



ADJOINS SOLDIERS POINT [BM001G109]

LEGEND

- LOW HAZARD LINE
- IMMEDIATE HIGH HAZARD LINE

TITLE:
COASTAL HAZARD MANAGEMENT STUDY
WYONG SHIRE COUNCIL

This plan is to be read in conjunction with Shirley Consulting Engineers Pty Ltd Geotechnical Report No. RN20100406 \ BM001-5

FOLLOWWORK: DPW / HM
DRAWN: WH

SHIRLEY CONSULTING ENGINEERS
 PTY LTD ABN 65 001 224 728
 CONSULTING & FORENSIC ENGINEERS
 805 PACIFIC HIGHWAY P.O. BOX 439
 PYMBLE NSW 2073 PYMBLE NSW 2073
 Ph (02) 9449 5577 Fax (02) 9449 5135

MAP AREA : CABBAGE TREE HARBOUR		
BLUFF AREA HAZARD LINES - 2050		
DRAWING NO: BM001G111	REVISION: B	DATE: 09-03-2010
<p>SCALE 1: 2000 @ A1</p>		



LEGEND

- LOW HAZARD LINE
- IMMEDIATE HIGH HAZARD LINE

TITLE:
COASTAL HAZARD MANAGEMENT STUDY
WYONG SHIRE COUNCIL

FOLLOWUP:
DPW / HM

DRAWN:
WH

This plan is to be read in conjunction with Shirley Consulting Engineers Pty Ltd Geotechnical Report No. **RN20100406 \ BM001-5**

SHIRLEY CONSULTING ENGINEERS
PTY LTD ABN 65 001 224 728
CONSULTING & FORENSIC ENGINEERS

805 PACIFIC HIGHWAY PYMBLE NSW 2073
Ph (02) 9449 5577

P.O. BOX 439 PYMBLE NSW 2073
Fax (02) 9449 5135

Quality is linked to the integrity & reputation of the business. Shirley Consulting Engineers Pty Ltd is an ISO 9001:2008 certified company.

MAP:
MAP AREA : NORVILLE
BLUFF AREA HAZARD LINES - 2050

DRAWING NO: BM001G112	REVISION: B	DATE: 09-03-2010
---------------------------------	-----------------------	----------------------------

METRES 0 10 20 30 40 50 100 150 METRES
 SCALE 1:2000 @ A1



LEGEND

- LOW HAZARD LINE
- IMMEDIATE HIGH HAZARD LINE

ADJOINS CABBAGE TREE HARBOUR [BM001G111]

TITLE:
COASTAL HAZARD MANAGEMENT STUDY
WYONG SHIRE COUNCIL

FIELDWORK:
DPW / HM

DRAWN:
WH

This plan is to be read in conjunction with Shirley Consulting Engineers Pty Ltd Geotechnical Report No. **RN20100406 \ BM001-5**

SHIRLEY CONSULTING ENGINEERS
 PTY LTD ABN 65 001 224 725
 CONSULTING & FORENSIC ENGINEERS
 805 PACIFIC HIGHWAY P.O. BOX 439
 PYMBLE NSW 2073 PYMBLE NSW 2073
 Ph (02) 9449 5577 Fax (02) 9449 5136

MN



ADJOINS BATEAU BAY [BM001G203]

ADJOINS YUMBOOL POINT [BM001G1]

MAP AREA : CRACKNECK		
BLUFF AREA HAZARD LINES - 2100		
DRAWING NO: BM001G202	REVISION: B	DATE: 09-03-2010
METRES 0 10 20 30 40 50 100 150 METRES		
SCALE 1 : 2000 @ A1		

LEGEND

- LOW HAZARD LINE
- IMMEDIATE HIGH HAZARD LINE

TITLE:
COASTAL HAZARD MANAGEMENT STUDY
WYONG SHIRE COUNCIL

FELLOWSHIP:
DPW / HM
WH

This plan is to be read in conjunction with Shirley Consulting Engineers Pty Ltd Geotechnical Report No. **RN20100406 \ BM001-5**

SHIRLEY CONSULTING ENGINEERS
PTY LTD ABN 65 001 224 728
CONSULTING & FORENSIC ENGINEERS

805 PACIFIC HIGHWAY P.O. BOX 439
PYMBLE NSW 2073 PYMBLE NSW 2073
Ph (02) 9449 5577 Fax (02) 9449 5135

SHIRLEY CONSULTING ENGINEERS INC.

MN



SMEC STUDY AREA

MAP AREA : BATEAU BAY
BLUFF AREA HAZARD LINES - 2100

DRAWING NO: BM001G203	REVISION: B	DATE: 09-03-2010
---------------------------------	-----------------------	----------------------------

METRES 0 10 20 30 40 50 100 150 METRES
SCALE 1:2000 @ A1



BLUE LAGOON BEACH RESORT

BATEAU BAY

ADJOINS CRACKNECK [BM001G202]

LEGEND

- LOW HAZARD LINE
- IMMEDIATE HIGH HAZARD LINE

TITLE:
COASTAL HAZARD MANAGEMENT STUDY
WYONG SHIRE COUNCIL

FELLOWSHIP: DPW / HM
DRAWN: WH

This plan is to be read in conjunction with Shirley Consulting Engineers Pty Ltd Geotechnical Report No. **RN20100406 \ BM001-5**

SHIRLEY CONSULTING ENGINEERS
PTY LTD ABN 65 001 224 728
CONSULTING & FORENSIC ENGINEERS
805 PACIFIC HIGHWAY P.O. BOX 439
PYMBLE NSW 2073 PYMBLE NSW 2073
Ph (02) 9449 5577 Fax (02) 9449 5135

MN



MAP AREA : TOOWOON BAY		
BLUFF AREA HAZARD LINES - 2100		
DRAWING NO: BM001G204	REVISION: B	DATE: 09-03-2010
<p>SCALE 1:2000 @ A1</p>		



LEGEND

- LOW HAZARD LINE
- IMMEDIATE HIGH HAZARD LINE

TITLE:
COASTAL HAZARD MANAGEMENT STUDY
WYONG SHIRE COUNCIL

FIELDWORK:
DPW / HM

DRAWN:
WH

This plan is to be read in conjunction with Shirley Consulting Engineers Pty Ltd Geotechnical Report No. **RN20100406 \ BM001-5**

SHIRLEY CONSULTING ENGINEERS
PTY LTD ABN 65 001 224 728
CONSULTING & FORENSIC ENGINEERS

805 PACIFIC HIGHWAY P.O. BOX 439
PYMBLE NSW 2073 PYMBLE NSW 2073
Ph (02) 9449 5577 Fax (02) 9449 5135

MAP AREA : BLUE BAY
BLUFF AREA HAZARD LINES - 2100

DRAWING NO: BM001G205	REVISION: B	DATE: 09-03-2010
---------------------------------	-----------------------	----------------------------

METRES 0 10 20 30 40 50 100 150 METRES
SCALE 1:2000 @ A1



LEGEND

- LOW HAZARD LINE
- IMMEDIATE HIGH HAZARD LINE

TITLE:
COASTAL HAZARD MANAGEMENT STUDY
WYONG SHIRE COUNCIL

FIELDWORK: DPW / HM
DRAWN: WH

This plan is to be read in conjunction with Shirley Consulting Engineers Pty Ltd Geotechnical Report No. **RN20100406 \ BM001-5**

SHIRLEY CONSULTING ENGINEERS
PTY LTD ABN 65 001 224 728
CONSULTING & FORENSIC ENGINEERS

805 PACIFIC HIGHWAY PYMBLE NSW 2073 Ph (02) 9449 5577

P.O. BOX 439 PYMBLE NSW 2073 Fax (02) 9449 5130

Shirley Consulting Engineers Pty Ltd is a member of the Engineering & Forensic Engineers Group of Companies.



LEGEND

— LOW HAZARD LINE

— IMMEDIATE HIGH HAZARD LINE

MAP AREA : SOLDIERS POINT
BLUFF AREA HAZARD LINES - 2100

DRAWING NO: BM001G209	REVISION: B	DATE: 09-03-2010
---------------------------------	-----------------------	----------------------------

METRES 0 10 20 30 40 50 100 150 METRES
SCALE 1:2000 @ A1

ADJOINS NORAH HEAD [BM001G210] ↑



LEGEND

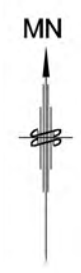
- LOW HAZARD LINE
- IMMEDIATE HIGH HAZARD LINE

TITLE:
COASTAL HAZARD MANAGEMENT STUDY
WYONG SHIRE COUNCIL

FIELDWORK:
DPW / HM
WH

This plan is to be read in conjunction with Shirley Consulting Engineers Pty Ltd Geotechnical Report No. **RN20100406 \ BM001-5**

SHIRLEY CONSULTING ENGINEERS
PTY LTD ABN 85 001 224 728
CONSULTING & FORENSIC ENGINEERS
805 PACIFIC HIGHWAY P.O. BOX 439
PYMBLE NSW 2073 PYMBLE NSW 2073
Ph (02) 9449 5577 Fax (02) 9449 5135



ADJOINS CABBAGE TREE HARBOUR [BM001G211]



ADJOINS SOLDIERS POINT [BM001G209]

LEGEND

- LOW HAZARD LINE
- IMMEDIATE HIGH HAZARD LINE

TITLE:
COASTAL HAZARD MANAGEMENT STUDY
WYONG SHIRE COUNCIL

This plan is to be read in conjunction with Shirley Consulting Engineers Pty Ltd Geotechnical Report No. RN20100406 \ BM001-5

FOLLOWWORK: DPW / HM
DRAWN: WH

SHIRLEY CONSULTING ENGINEERS
 PTY LTD ABN 65 001 224 728
 CONSULTING & FORENSIC ENGINEERS
 805 PACIFIC HIGHWAY P.O. BOX 439
 PYMBLE NSW 2073 PYMBLE NSW 2073
 Ph (02) 9449 5577 Fax (02) 9449 5135



LEGEND

- LOW HAZARD LINE
- IMMEDIATE HIGH HAZARD LINE

MAP AREA : NORVILLE		
BLUFF AREA HAZARD LINES - 2100		
DRAWING NO: BM001G212	REVISION: B	DATE: 09-03-2010
SCALE 1:2000 @ A1		



LIMIT OF MAPS ↑

SMEC STUDY AREA ↑

JENNY DIXON BEACH

ADJOINS CABBAGE TREE HARBOUR [BM001G211] ↓

LEGEND

- LOW HAZARD LINE
- IMMEDIATE HIGH HAZARD LINE

TITLE:
COASTAL HAZARD MANAGEMENT STUDY
WYONG SHIRE COUNCIL

FIELDWORK: DPW / HM
DRAWN: WH

This plan is to be read in conjunction with Shirley Consulting Engineers Pty Ltd Geotechnical Report No. **RN20100406 \ BM001-5**

SHIRLEY CONSULTING ENGINEERS
PTY LTD ABN 65 001 224 728
CONSULTING & FORENSIC ENGINEERS
805 PACIFIC HIGHWAY PYMBLE NSW 2073
Ph (02) 9449 5577

P.O. BOX 439 PYMBLE NSW 2073
Fax (02) 9449 5136