

AMENDED ITEM

Item No: 4.1
Title: Questions with Notice
Department: Governance

10 August 2020 Ordinary Council Meeting

Reference: F2020/00039 - D14080592



Questions with Notice

The following questions were submitted by Councillor Hogan:

Catherine Hill Bay Water and sewer services

Central Coast Council is providing water and sewer services to residents at Catherine Hill Bay which is located in the Lake Macquarie LGA.

- 1 Could staff please provide a brief report outlining the mechanisms and financial benefits of this arrangement?*
- 2 Could staff also provide a brief report on the Norah Head treatment plant; how it works, how many lines and what suburbs it services?*

This is a complex question requiring research and resources to provide an appropriate response. As a result, it is not possible to provide a response for this Council meeting and it is proposed to provide the response for inclusion in the Business Paper for the meeting of 24 August 2020. [Click here to enter text.](#)

The following questions were submitted by Councillor MacGregor:

Metres of footpath and curb and guttering laid from July 2017 to the present by Central Coast Council

- 1 How many metres of footpath have been laid by this council from July 2017 to the present? And how is this total figure broken up by ward boundaries?*
- 2 How many metres of curb and guttering has Central Coast Council delivered from July 2017 to the present? And how is this total figure broken up by ward boundaries?*

The response provided by the Director Roads, Transport, Drainage and Waste:

- 1 How many metres of footpath have been laid by this council from July 2017 to the present? And how is this total figure broken up by ward boundaries?*

4.1 Questions with Notice (contd)

Response

The total length of footpath that has been constructed between July 2017 and June 2020 is **33.6km**. A table below shows the total figure broken up by ward boundaries.

Both Budgewoi and Wyong wards have seen a substantial increase in footpath constructed as a result of developer works in those areas that has not been captured in these figures.

2017/18 to 2019/20 - Total KPI per ward	
FOOTPATH	
Budgewoi	5.8 km
Wyong	3.6 km
The Entrance	10.8 km
Gosford West	6.4 km
Gosford East	7.0 km
Total	33.6 km of footpath

- 2 *How many metres of curb and guttering has Central Coast Council delivered from July 2017 to the present? And how is this total figure broken up by ward boundaries?*

Response

The total length of kerb and gutter that has been constructed between July 2017 and June 2020 is **35.9km**. A table below shows the total figure broken up by ward boundaries.

Both the Budgewoi and Wyong wards have seen a substantial increase in kerb and gutter constructed as a result of Developer works that has not been captured in these figures. The introduction of substantial grant funded works within the Somersby Industrial Park, along with Blenheim Avenue, Greenfield Road, Hutton Road, Oceano Street and Carlton Road together with the works included as part of the \$70m Federal Government Package have seen a marked increase in The Entrance and Gosford West wards.

2017/18 to 2019/20 - Total KPI per ward	
KERB	
Budgewoi	2.6 km
Wyong	2.2 km
The Entrance	11.5 km
Gosford West	13.5 km
Gosford East	6.0 km
Total	35.9 km of kerb and gutter

The following question was submitted by Deputy Mayor Smith:

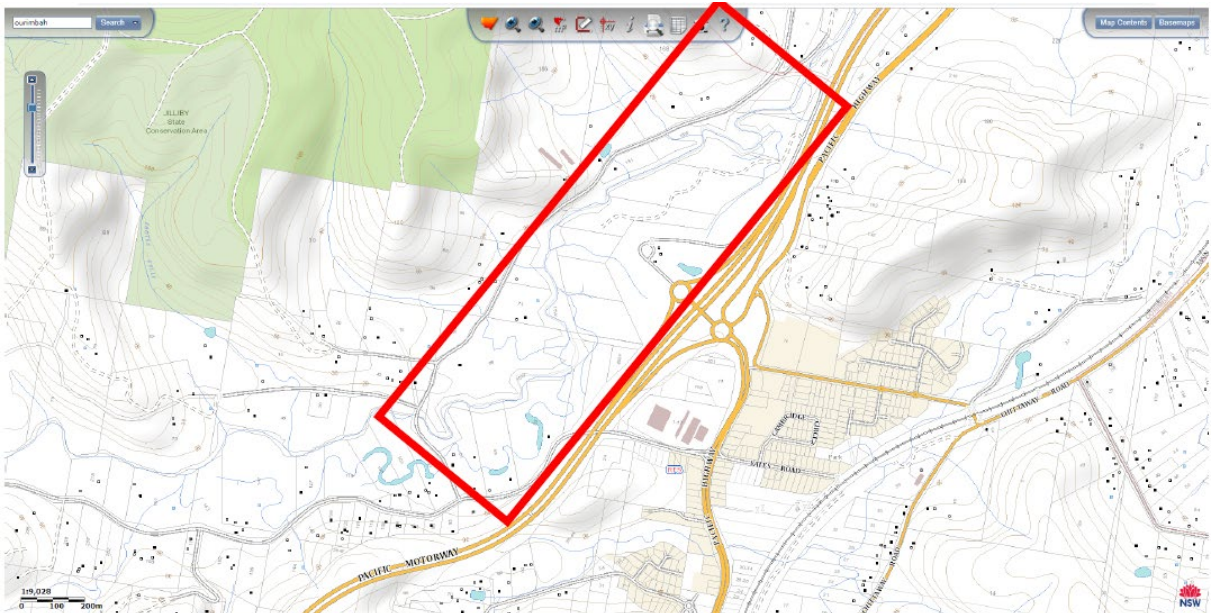
Land Ownership

Can staff please provide an update regarding the current ownership status and future options of the land known as the "RMS Land" that is the site of the Ourimbah Palmgrove Landcare Group.

The response provided by the Acting Director Environment and Planning

The Ourimbah Palmgrove Landcare Group works across multiple land parcels owned by Council and Transport for NSW.

Council officers will contact Transport for NSW to discussion future options for the twelve land parcels owned by Transport for NSW including the potential for the land parcels to transferred to Council's ownership.



Attachments

Nil