



# Wyong River Catchment Floodplain Risk Management Study & Plan

Final Report  
Volume 2 of 2: Figures



## ▶ FIGURES

- Figure 1: Wyong River Catchment
- Figure 2: Environmental and Heritage Constraints
- Figure 3: Ground Surface Elevations

### Map Set A – The Existing Flood Risk

- Figure A1: Peak Floodwater Depths, Velocities & Levels for the 20% AEP Flood
- Figure A2: Peak Floodwater Depths, Velocities & Levels for the 5% AEP Flood
- Figure A3: Peak Floodwater Depths, Velocities & Levels for the 1% AEP Flood
- Figure A4: Peak Floodwater Depths, Velocities & Levels for the PMF
- Figure A5: Flood Hazard for the 1% AEP Flood
- Figure A6: Flood Hazard for the PMF
- Figure A7: Emergency Response Classifications for the 1% AEP Flood
- Figure A8: Emergency Response Classifications for the PMF
- Figure A9: 1% AEP Hydraulic Categories
- Figure A10: PMF Hydraulic Categories
- Figure A11: Flood Planning Area
- Figure A12: Existing Flood Risk for the 20% AEP Event
- Figure A13: Existing Flood Risk for the 5% AEP Event
- Figure A14: Existing Flood Risk for the 1% AEP Event
- Figure A15: Existing Flood Risk for the PMF Event
- Figure A16: Peak 1% AEP Flood Extent with 15% increase in Rainfall & 0.4m Increase in Tuggerah Lake Level
- Figure A17: Peak 1% AEP Flood Extent with 30% increase in Rainfall & 0.9m Increase in Tuggerah Lake Level
- Figure A18: Hydrological Infrastructure used for Wyong River Flood Warning System

### Map Set B – Mardi Creek Detention Basin

- Figure B1: Conceptual Layout for Mardi Creek Detention Basin
- Figure B2: Peak Floodwater Depths, Velocities & Levels for the 20% AEP Flood with Mardi Creek Detention Basin
- Figure B3: Peak Floodwater Depths, Velocities & Levels for the 1% AEP Flood with Mardi Creek Detention Basin
- Figure B4: Flood Level Difference Mapping for the 20% AEP Flood with Mardi Creek Detention Basin
- Figure B5: Flood Level Difference Mapping for the 1% AEP Flood with Mardi Creek Detention Basin

### Map Set C – Anzac Road Levee

- Figure C1: Conceptual Layout for Anzac Road Levee
- Figure C2: Peak Floodwater Depths, Velocities & Levels for the 20% AEP Flood with Anzac Road Levee
- Figure C3: Peak Floodwater Depths, Velocities & Levels for the 1% AEP Flood with Anzac Road Levee
- Figure C4: Flood Level Difference Mapping for the 20% AEP Flood with Anzac Road Levee
- Figure C5: Flood Level Difference Mapping for the 1% AEP Flood with Anzac Road Levee

### Map Set D – Mardi Creek Relief Floodway

- Figure D1: Conceptual Layout for Mardi Creek Relief Floodway
- Figure D2: Peak Floodwater Depths, Velocities & Levels for the 20% AEP Flood with Mardi Creek Floodway
- Figure D3: Peak Floodwater Depths, Velocities & Levels for the 1% AEP Flood with Mardi Creek Floodway
- Figure D4: Flood Level Difference Mapping for the 20% AEP Flood with Mardi Creek Floodway
- Figure D5: Flood Level Difference Mapping for the 1% AEP Flood with Mardi Creek Floodway



#### [Map Set E – South Tacoma Relief Floodway](#)

- Figure E1: Conceptual Layout for South Tacoma Relief Floodway
- Figure E2: Peak Floodwater Depths, Velocities & Levels for the 20% AEP Flood with South Tacoma Floodway
- Figure E3: Peak Floodwater Depths, Velocities & Levels for the 1% AEP Flood with South Tacoma Floodway
- Figure E4: Flood Level Difference Mapping for the 20% AEP Flood with South Tacoma Floodway
- Figure E5: Flood Level Difference Mapping for the 1% AEP Flood with South Tacoma Floodway

#### [Map Set F – Vegetation Removal across Lower Floodplain](#)

- Figure F1: Extent of Potential Vegetation Removal
- Figure F2: Peak Floodwater Depths, Velocities & Levels for the 20% AEP Flood with Vegetation Removed
- Figure F3: Peak Floodwater Depths, Velocities & Levels for the 1% AEP Flood with Vegetation Removed
- Figure F4: Flood Level Difference Mapping for the 20% AEP Flood with Vegetation Removed
- Figure F5: Flood Level Difference Mapping for the 1% AEP Flood with Vegetation Removed

#### [Map Set G – Mardi Creek Debris Control Structures](#)

- Figure G1: Potential Location of Debris Control Structures
- Figure G2: Peak Floodwater Depths, Velocities & Levels for the 20% AEP Flood with Debris Control Structures
- Figure G3: Peak Floodwater Depths, Velocities & Levels for the 1% AEP Flood with Debris Control Structures
- Figure G4: Flood Level Difference Mapping for the 20% AEP Flood with Debris Control Structures
- Figure G5: Flood Level Difference Mapping for the 1% AEP Flood with Debris Control Structures

#### [Map Set H – Wyong River Dredging](#)

- Figure H1: Extent of Potential Wyong River Dredging
- Figure H2: Peak Floodwater Depths, Velocities & Levels for the 20% AEP Flood with Dredging
- Figure H3: Peak Floodwater Depths, Velocities & Levels for the 1% AEP Flood with Dredging
- Figure H4: Flood Level Difference Mapping for the 20% AEP Flood with Dredging
- Figure H5: Flood Level Difference Mapping for the 1% AEP Flood with Dredging

#### [Map Set I – Property Modification Options](#)

- Figure I1: Location of Houses Potentially Eligible for Voluntary Purchase
- Figure I2: Location of Houses Potentially Eligible for Voluntary Raising
- Figure I3: Location of Houses Potentially Eligible for Voluntary Flood Proofing
- Figure I4: Areas Where Exceptional Circumstances Could Be Considered
- Figure I5: Areas Where Shelter-In-Place Controls Could Be Considered within the Flood Planning Area

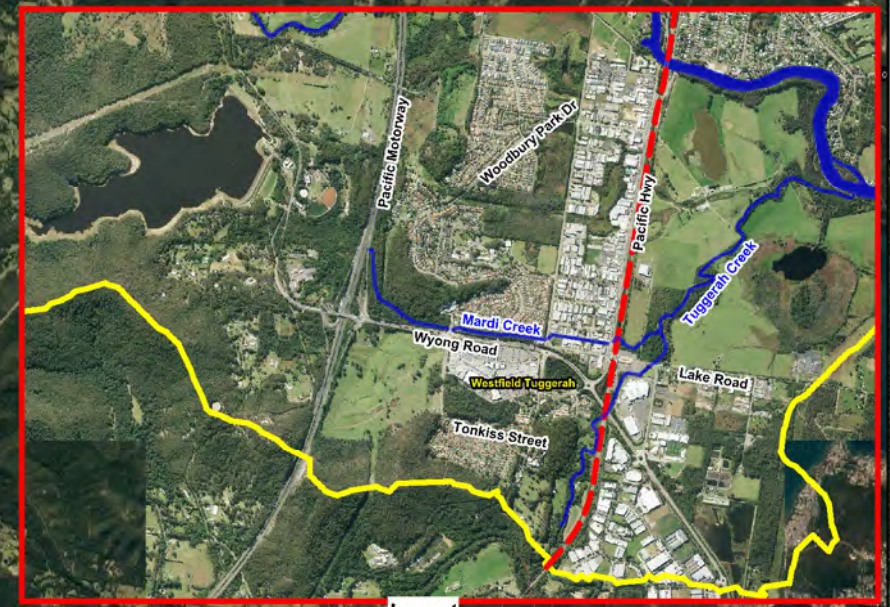
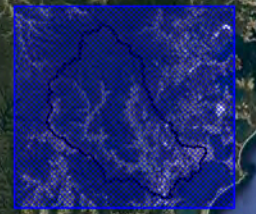
#### [Map Set J – Response Modification Options](#)

- Figure J1: Critical Roadway Overtopping Locations
- Figure J2: Potential Flood Gate Locations

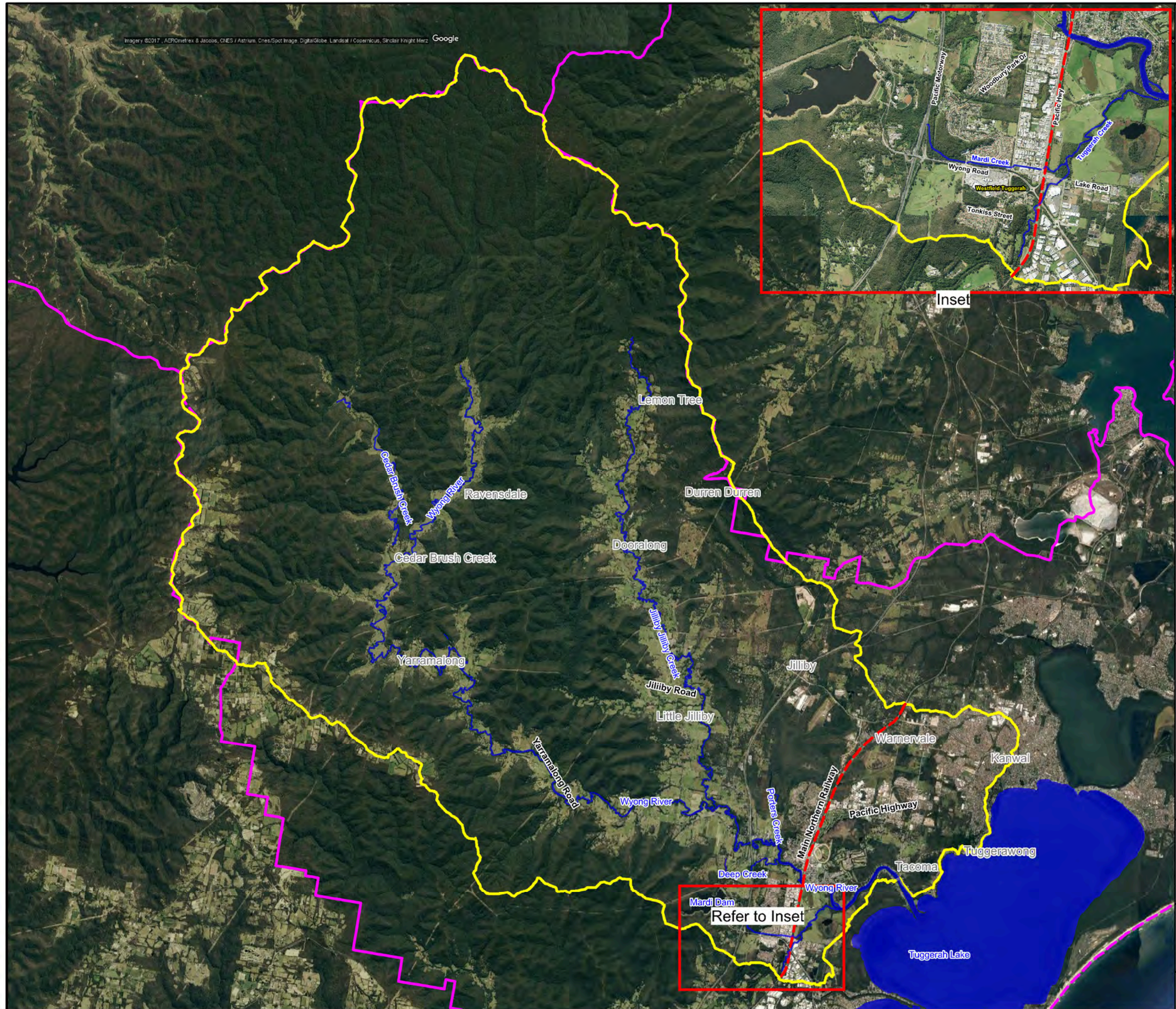
#### [Map Set K – Draft Floodplain Risk Management Plan](#)

- Figure K1: Wyong River Catchment Floodplain Risk Management Plan





Inset




**LEGEND**

-  Catchment Boundary
-  LGA Boundary
-  Waterway



Scale 1:120,000 (at A3)



0 2.5 5.0  
Km

**Figure 1:  
Wyong River  
Catchment**

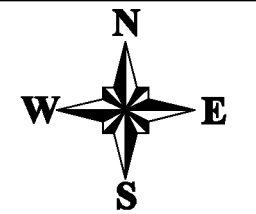
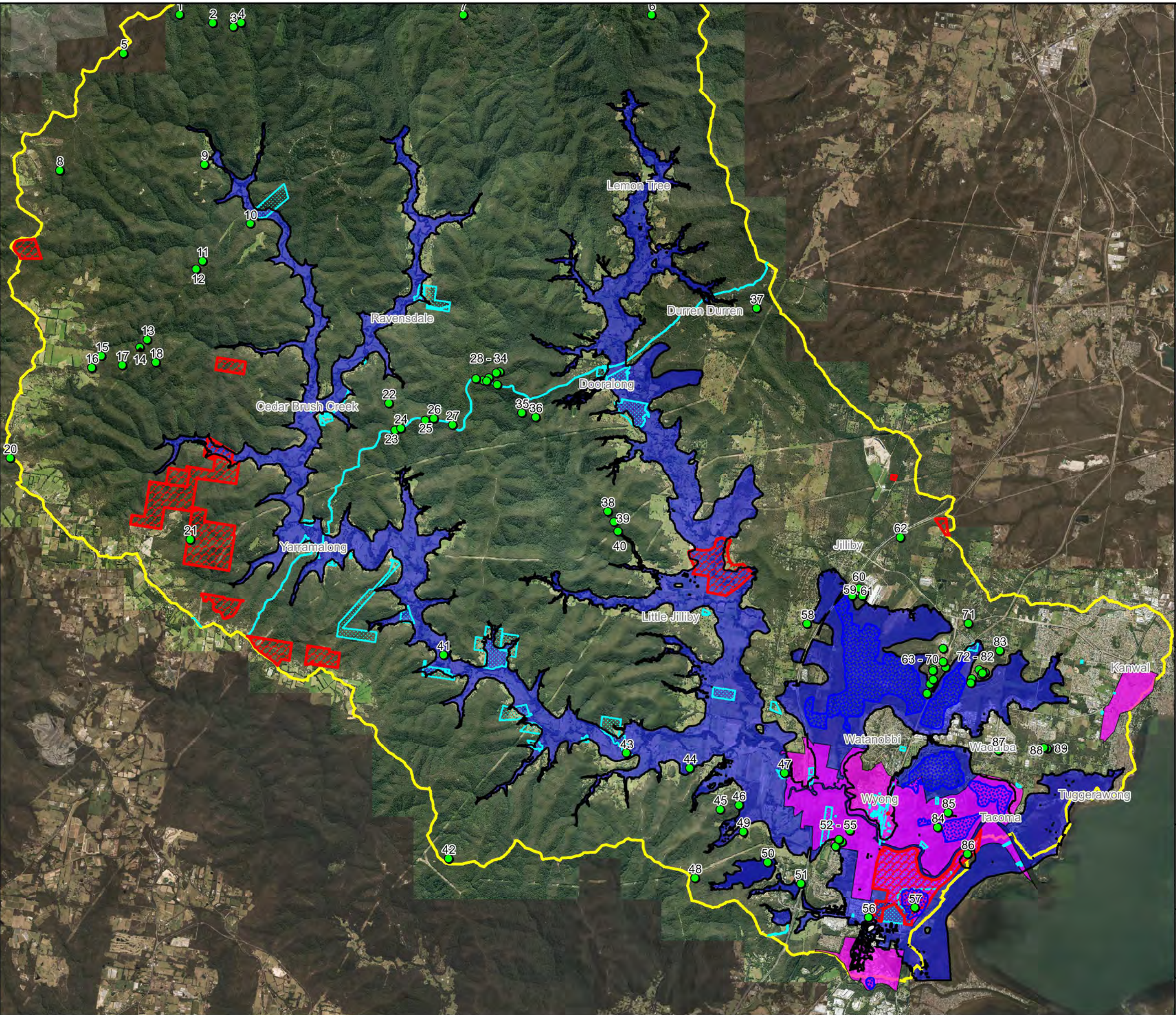
Prepared By:  
 **Catchment Simulation Solutions**  
 Suite 2.01, 210 George St  
 Sydney, NSW 2000

File Name: Fig1 - Wyong River  
 Catchment.wor



**LEGEND**

- PMF Extent
- Heritage Site
- SEPP14 Coastal Wetlands
- SEPP71 Coastal Protection
- Aboriginal Land Claims
- Aboriginal Heritage Site



Scale 1:90,000 (at A3)  
0 2.0 4.0  
Km

**Figure 2:  
Environmental and  
Heritage Constraints**

Prepared By:  
**Catchment Simulation Solutions**  
Suite 2.01, 210 George St  
Sydney, NSW 2000

File Name: Fig2 - Environmental and  
Heritage Constraints.wor

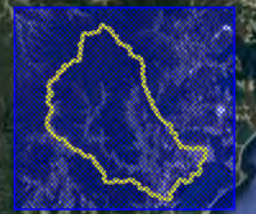


Figure Extent

**LEGEND**


DEM (mAHD)

0
10
20
40
60
80
100
150
200
250
>= 300



Scale 1:120,000 (at A3)  
0 2.5 5.0  
Km

**Figure 3:  
Ground Surface  
Elevations**

Prepared By:  
 **Catchment Simulation Solutions**  
Suite 2.01, 210 George St  
Sydney, NSW 2000

File Name: Fig3 - Ground Surface  
Elevation.wor

