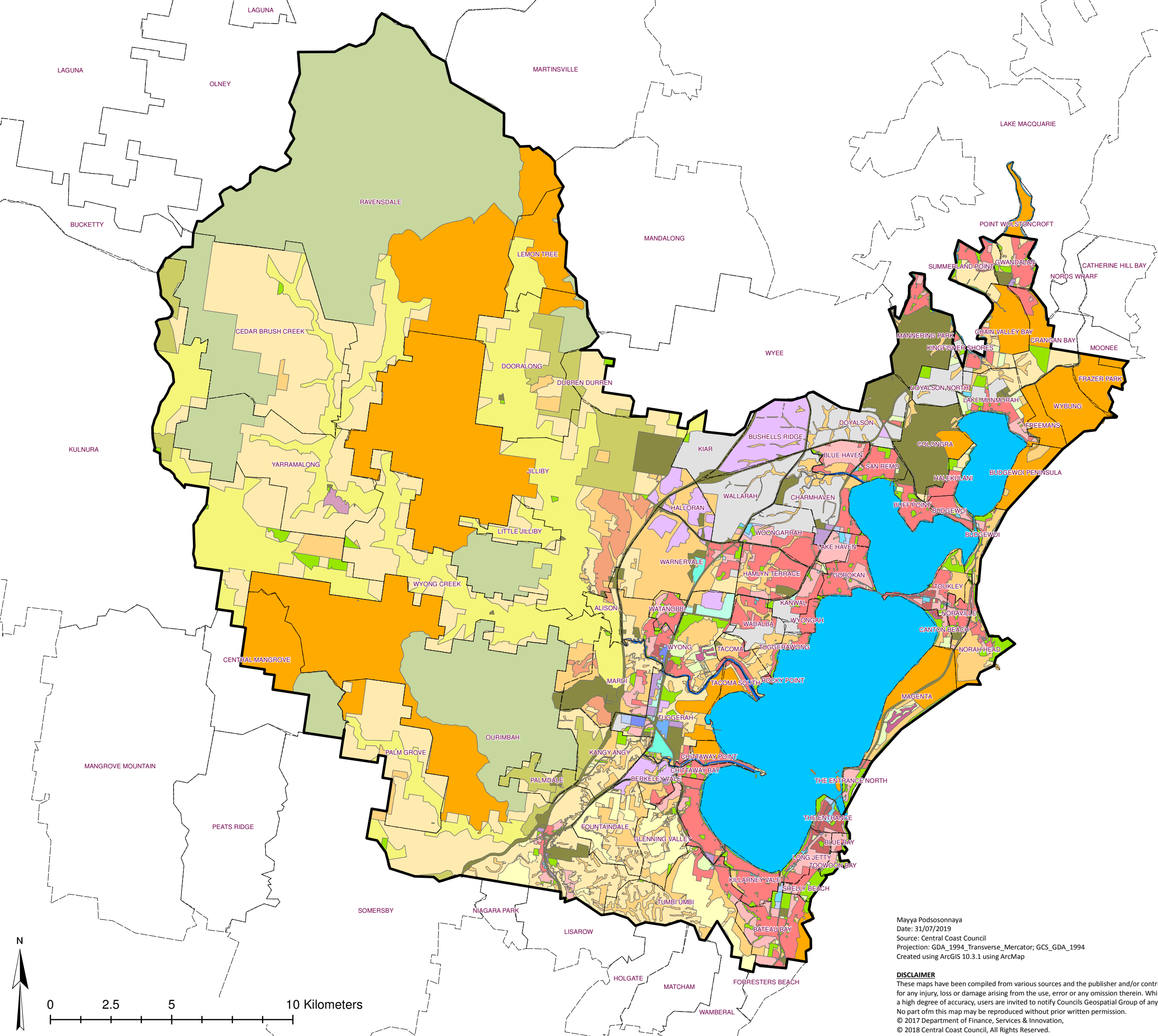


Figure 1

Northern Region 2019 DSP Plan Area



CENTRAL COAST COUNCIL
DEVELOPMENT SERVICING
PLAN AREA NORTH



- Legend**
- Northern Region DSP Area
 - Suburb boundary
 - Local Environmental Plan 2013
 - B1 Neighbourhood Centre
 - B2 Local Centre
 - B3 Commercial Core
 - B4 Mixed Use
 - B5 Business Development
 - B6 Entrprise Corridor
 - B7 Business Park
 - E1 National Park and Nature Reserve
 - E2 Environenta Conservation
 - E3 Environmental Management
 - E4 Environmental Living
 - IN1 General Industrial
 - IN2 Light Industrial
 - R1 General Residential
 - R2 Low Residential
 - R3 Medium Density Residential
 - R5 Large Lot Residential
 - RE1 Public Recreation
 - RE2 Private Recreation
 - RU1 Primary Production
 - RU2 Rural Landscape
 - RU3 Forestry
 - RU5 Village
 - RU6 Transition
 - SP1 Special Activities
 - SP2 Infrastructure
 - SP3 Tourist
 - W1 Natural Waterways
 - W2 Recreational Waterways

Mayya Podsoonnaya
Date: 31/07/2019
Source: Central Coast Council
Projection: GDA_1994_Transverse_Mercator; GCS_GDA_1994
Created using ArcGIS 10.3.1 using ArcMap

DISCLAIMER
These maps have been compiled from various sources and the publisher and/or contributors accept no responsibility for any injury, loss or damage arising from the use, error or any omission therein. While all care is taken to ensure a high degree of accuracy, users are invited to notify Councils Geospatial Group of any map discrepancies. No part ofm this map may be reproduced without prior written permission.
© 2017 Department of Finance, Services & Innovation,
© 2018 Central Coast Council, All Rights Reserved.

