

**Figure 2**

**Southern Region Proposed Water Supply Assets**



# CENTRAL COAST COUNCIL PROPOSED WATER ASSETS DSP SOUTH

### Legend

#### Proposed Water Mains

- 100 mm
- 150 mm
- 200 mm
- 250 mm
- 300 mm
- 375 mm

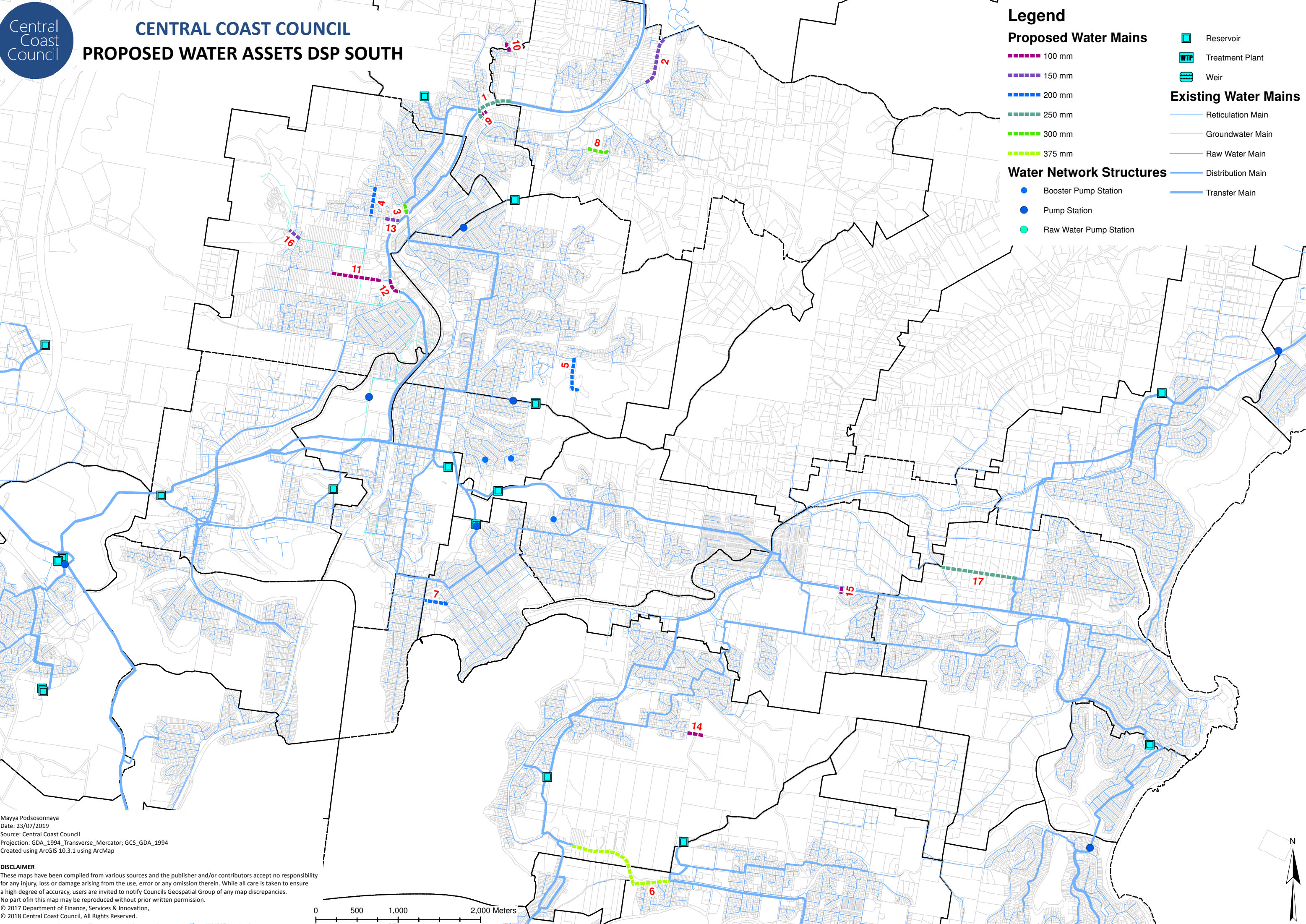
#### Existing Water Mains

- Reticulation Main
- Groundwater Main
- Raw Water Main

#### Water Network Structures

- Booster Pump Station
- Pump Station
- Raw Water Pump Station

- Reservoir
- WTP
- Weir
- Distribution Main
- Transfer Main



Mayya Podsoonnaya  
Date: 23/07/2019  
Source: Central Coast Council  
Projection: GDA\_1994\_Transverse\_Mercator; GCS\_GDA\_1994  
Created using ArcGIS 10.3.1 using ArcMap

**DISCLAIMER**  
These maps have been compiled from various sources and the publisher and/or contributors accept no responsibility for any injury, loss or damage arising from the use, error or any omission therein. While all care is taken to ensure a high degree of accuracy, users are invited to notify Councils Geospatial Group of any map discrepancies. No part of this map may be reproduced without prior written permission.  
© 2017 Department of Finance, Services & Innovation,  
© 2018 Central Coast Council, All Rights Reserved.



# CENTRAL COAST COUNCIL PROPOSED WATER ASSETS DSP SOUTH

## Legend

### Proposed Water Mains

- 100 mm
- 150 mm
- 200 mm
- 250 mm
- 300 mm
- 375 mm

### Water Network Structures

- Booster Pump Station
- Pump Station
- Raw Water Pump Station
- Reservoir
- WTP
- Weir

### Existing Water Mains

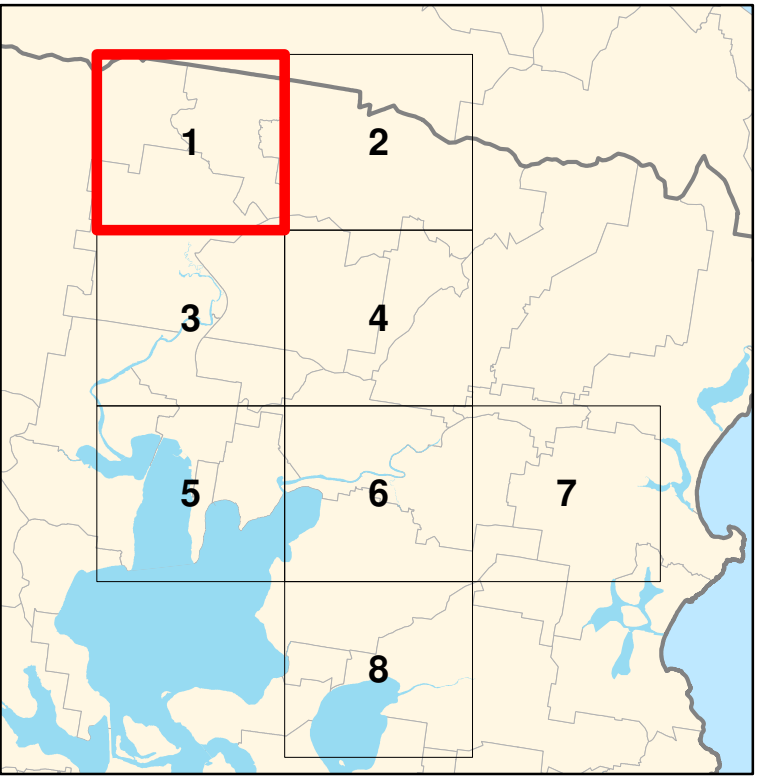
- Reticulation Main
- Groundwater Main
- Raw Water Main

- Distribution Main
- Transfer Main

- Contours 5m
- Forecast ID Centres
- Somersby Industrial Estate
- Cockle Bay PSP

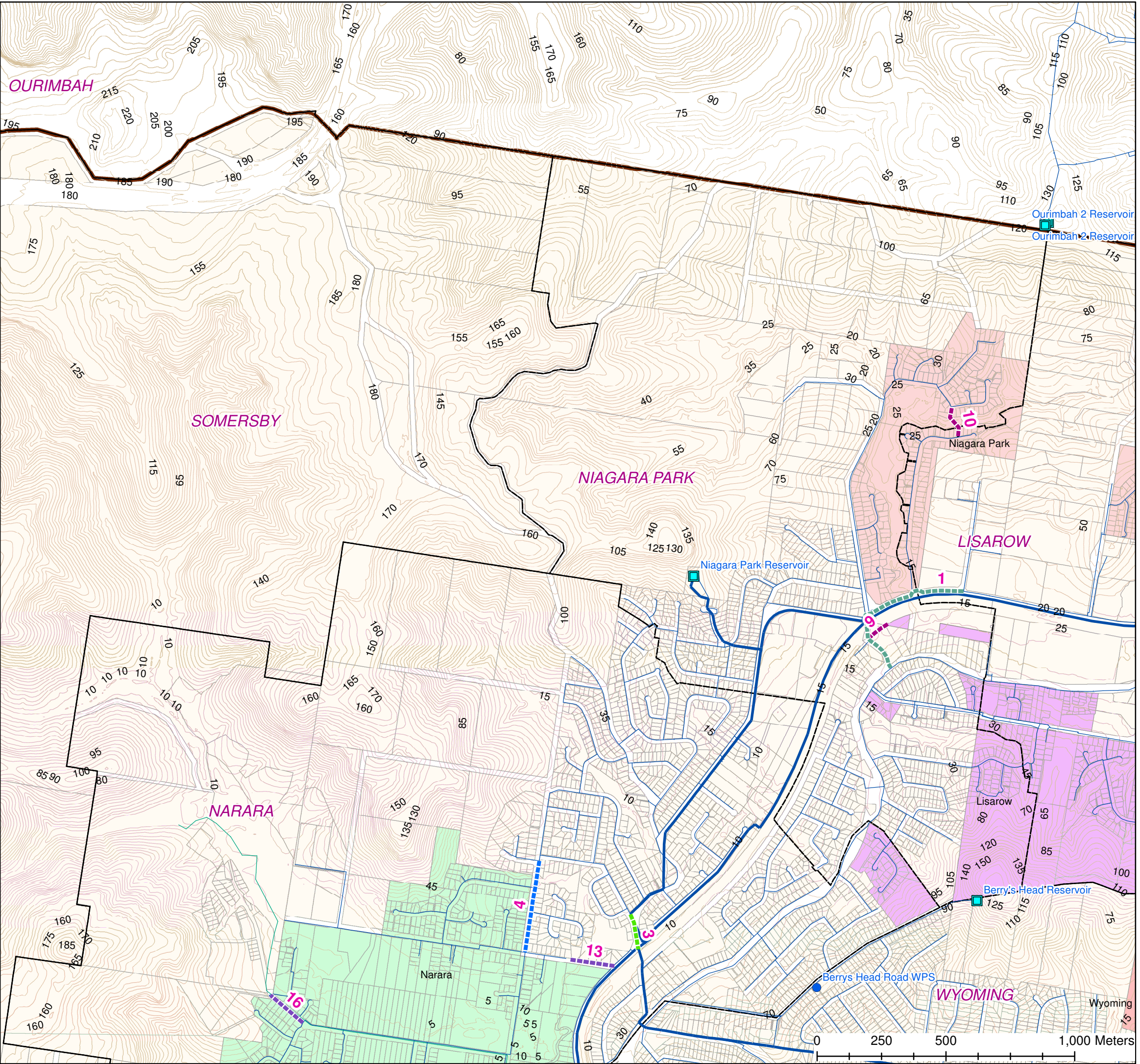
### DSP Area, Part

- Erina Township
- Erina, 1
- Erina, 2
- Gosford City Centre
- Kariong
- Kincumber
- Lisarow
- Narara
- Niagara Park
- Springfield
- Wyoming



Mayya Podsoonnaya  
Date: 22/07/2019  
Source: Central Coast Council  
Projection: GDA\_1994\_Transverse\_Mercator; GCS\_GDA\_1994  
Created using ArcGIS 10.3.1 using ArcMap

**DISCLAIMER**  
These maps have been compiled from various sources and the publisher and/or contributors accept no responsibility for any injury, loss or damage arising from the use, error or any omission therein. While all care is taken to ensure a high degree of accuracy, users are invited to notify Councils Geospatial Group of any map discrepancies. No part of this map may be reproduced without prior written permission.  
© 2017 Department of Finance, Services & Innovation,  
© 2018 Central Coast Council, All Rights Reserved.





# CENTRAL COAST COUNCIL PROPOSED WATER ASSETS DSP SOUTH

## Legend

### Proposed Water Mains

- 100 mm
- 150 mm
- 200 mm
- 250 mm
- 300 mm
- 375 mm

### Water Network Structures

- Booster Pump Station
- Pump Station
- Raw Water Pump Station
- Reservoir
- Treatment Plant
- Weir

### Existing Water Mains

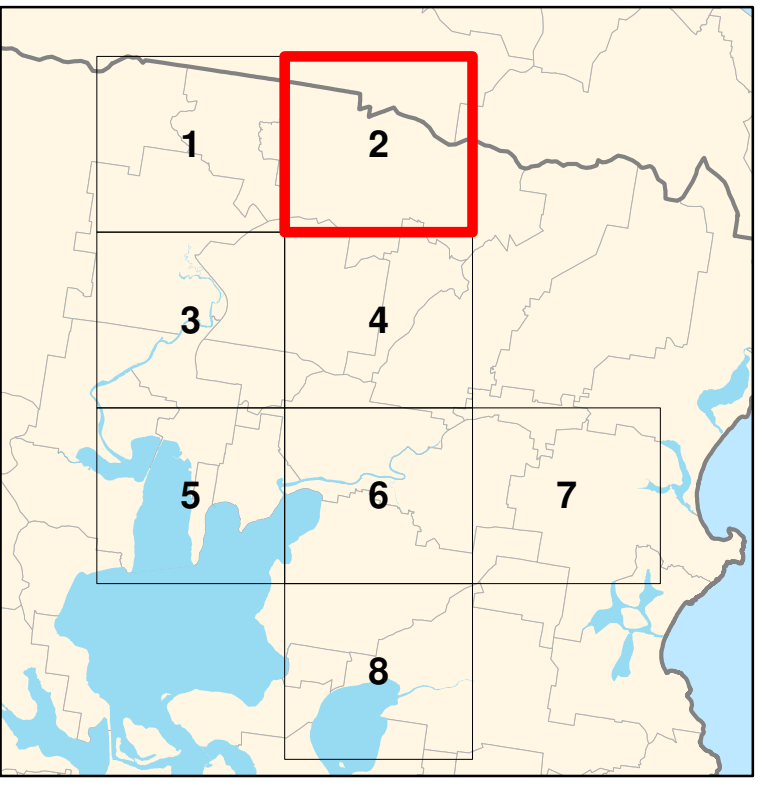
- Reticulation Main
- Groundwater Main
- Raw Water Main

- Distribution Main
- Transfer Main
- Contours 5m

- Forecast ID Centres
- Somersby Industrial Estate
- Cockle Bay PSP

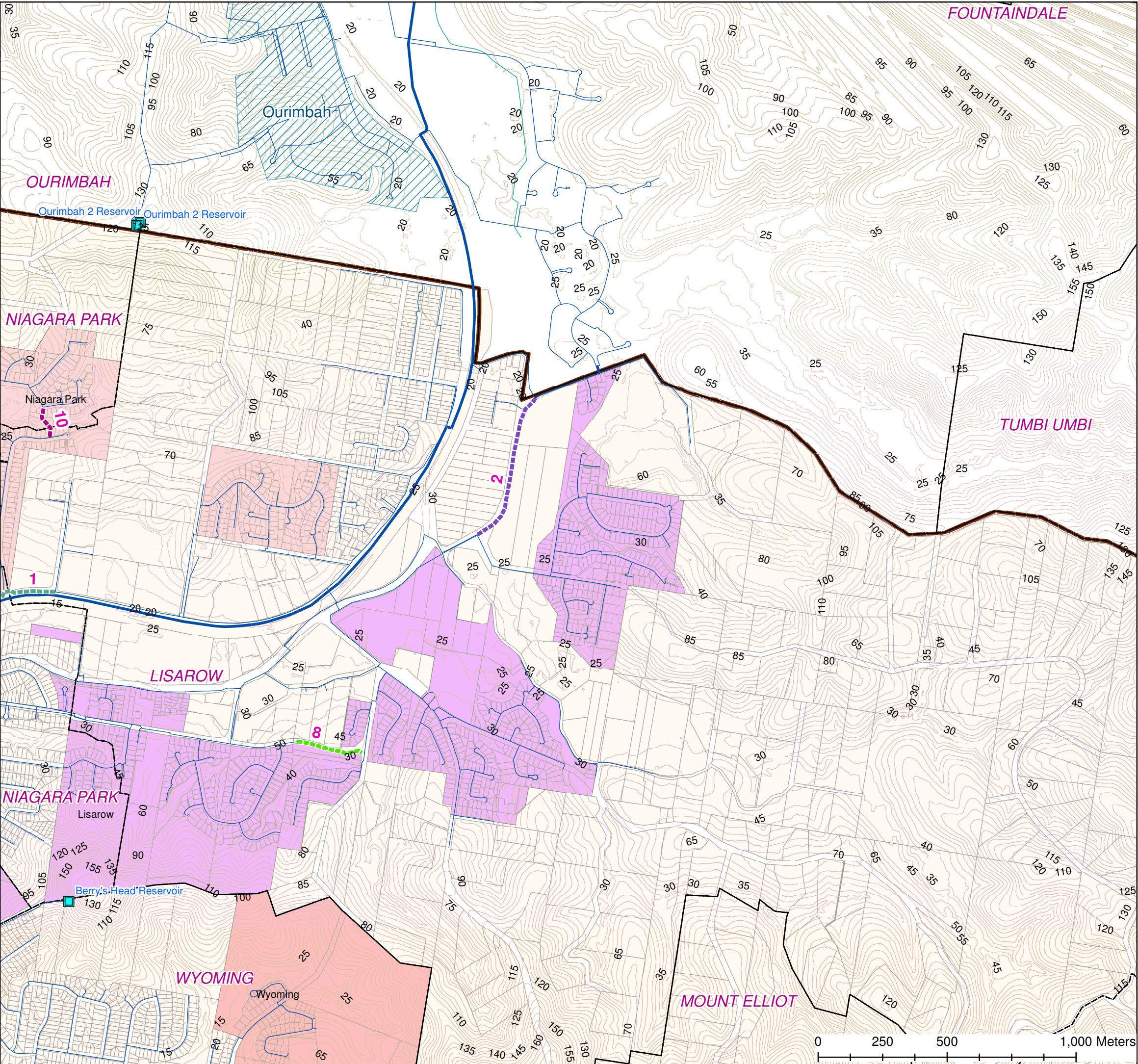
### DSP Area, Part

- Erina Township
- Erina, 1
- Erina, 2
- Gosford City Centre
- Kariong
- Kincumber
- Lisarow
- Narara
- Niagara Park
- Springfield
- Wyoming



Mayya Podsoonnaya  
Date: 22/07/2019  
Source: Central Coast Council  
Projection: GDA\_1994\_Transverse\_Mercator; GCS\_GDA\_1994  
Created using ArcGIS 10.3.1 using ArcMap

**DISCLAIMER**  
These maps have been compiled from various sources and the publisher and/or contributors accept no responsibility for any injury, loss or damage arising from the use, error or any omission therein. While all care is taken to ensure a high degree of accuracy, users are invited to notify Councils Geospatial Group of any map discrepancies. No part of this map may be reproduced without prior written permission.  
© 2017 Department of Finance, Services & Innovation,  
© 2018 Central Coast Council, All Rights Reserved.

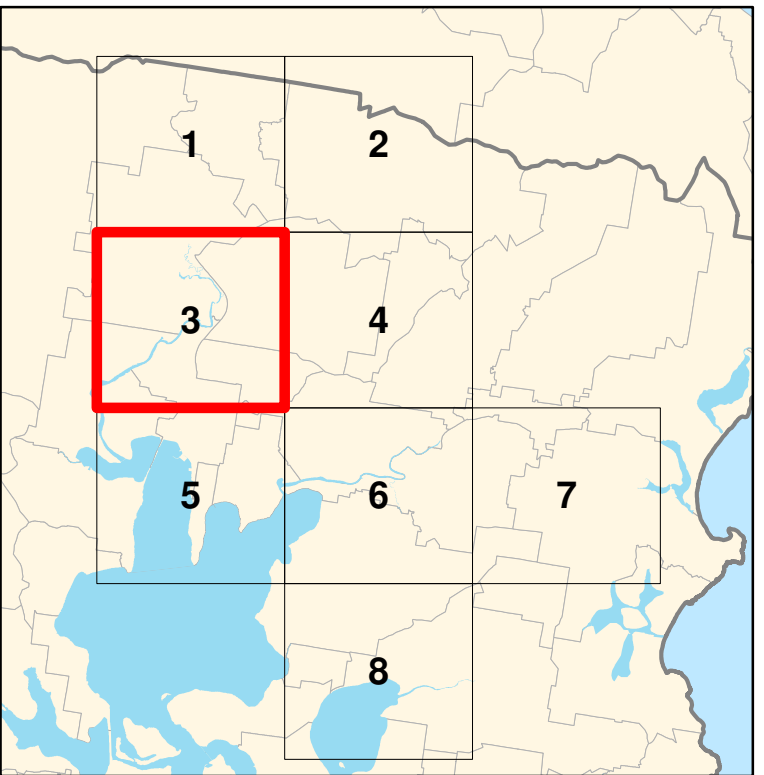
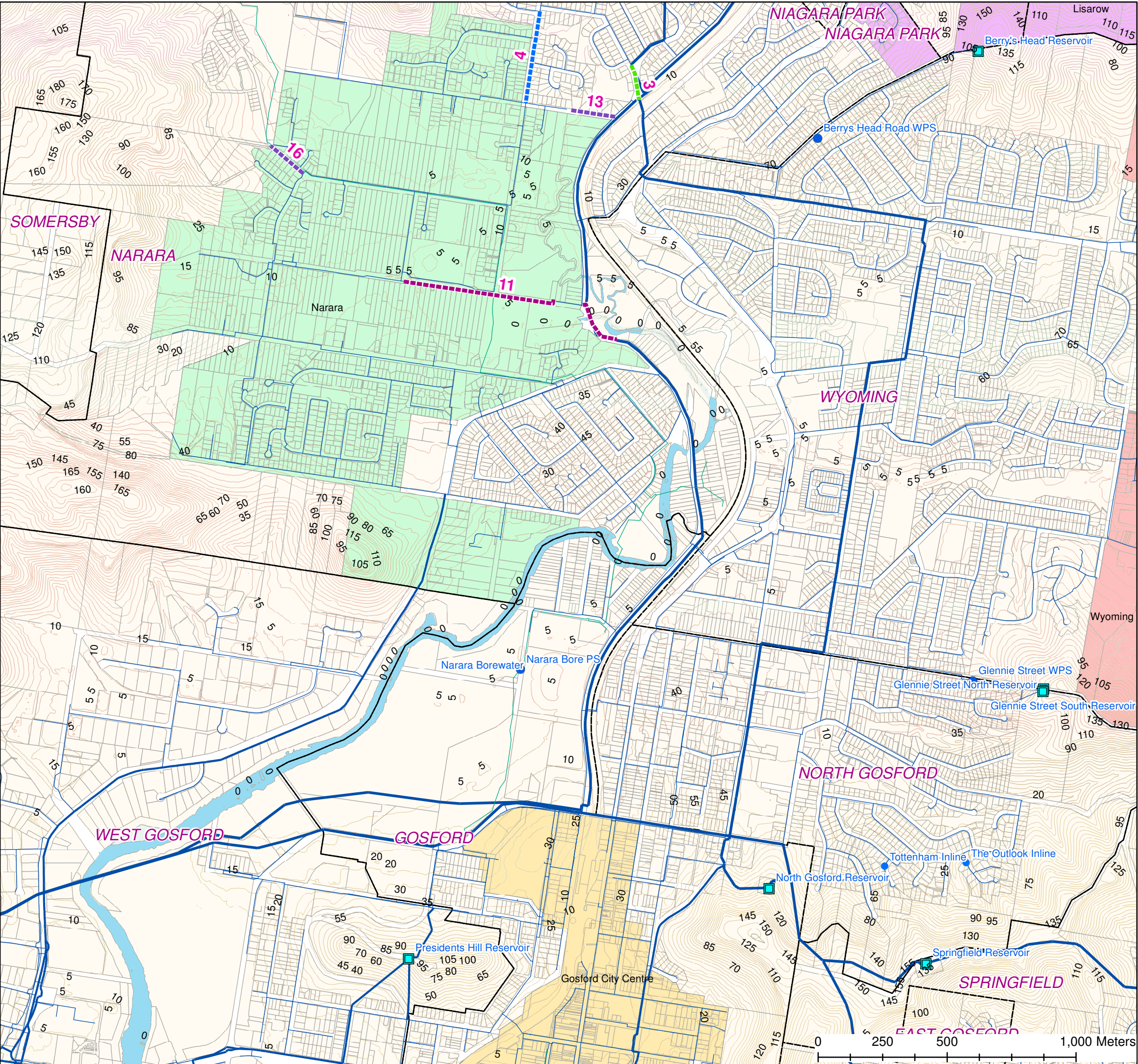




CENTRAL COAST COUNCIL  
PROPOSED WATER ASSETS DSP SOUTH

Legend

- Proposed Water Mains**
- 100 mm
  - 150 mm
  - 200 mm
  - 250 mm
  - 300 mm
  - 375 mm
- Water Network Structures**
- Booster Pump Station
  - Pump Station
  - Raw Water Pump Station
  - Reservoir
  - Treatment Plant
  - Weir
- Existing Water Mains**
- Reticulation Main
  - Groundwater Main
  - Raw Water Main
- DSP Area, Part**
- Erina Township
  - Erina, 1
  - Erina, 2
  - Gosford City Centre
  - Kariong
  - Kincumber
  - Lisarow
  - Narara
  - Niagara Park
  - Springfield
  - Wyoming
- Other Symbols**
- Distribution Main
  - Transfer Main
  - Contours 5m
  - Forecast ID Centres
  - Somersby Industrial Estate
  - Cockle Bay PSP



Mayya Podsoonnaya  
Date: 22/07/2019  
Source: Central Coast Council  
Projection: GDA\_1994\_Transverse\_Mercator; GCS\_GDA\_1994  
Created using ArcGIS 10.3.1 using ArcMap

**DISCLAIMER**  
These maps have been compiled from various sources and the publisher and/or contributors accept no responsibility for any injury, loss or damage arising from the use, error or any omission therein. While all care is taken to ensure a high degree of accuracy, users are invited to notify Councils Geospatial Group of any map discrepancies. No part of this map may be reproduced without prior written permission.  
© 2017 Department of Finance, Services & Innovation,  
© 2018 Central Coast Council, All Rights Reserved.



## CENTRAL COAST COUNCIL PROPOSED WATER ASSETS DSP SOUTH

### Legend

#### Proposed Water Mains

- 100 mm
- 150 mm
- 200 mm
- 250 mm
- 300 mm
- 375 mm

#### Water Network Structures

- Booster Pump Station
- Pump Station
- Raw Water Pump Station
- Reservoir
- WTP
- Weir

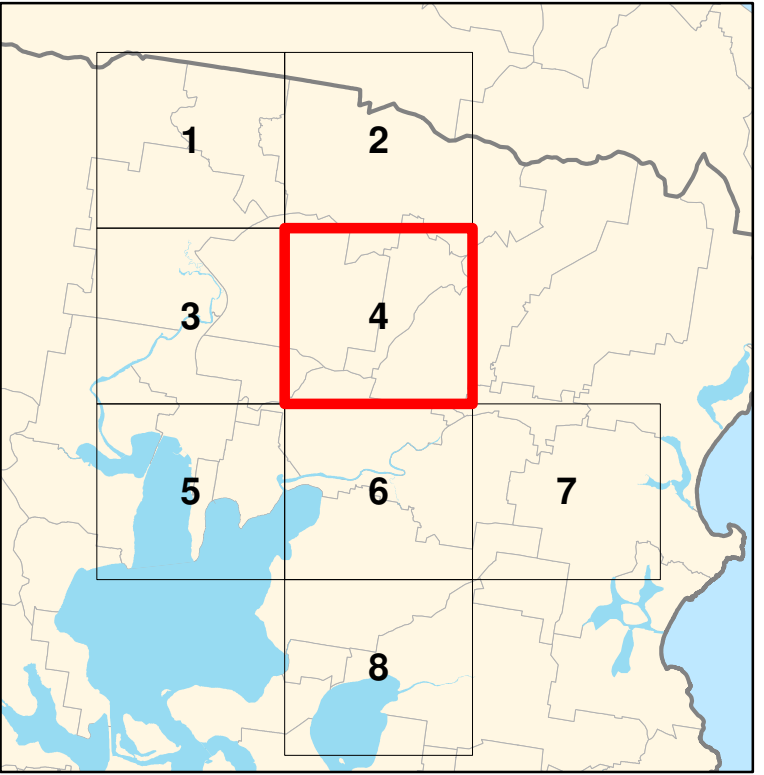
#### Existing Water Mains

- Reticulation Main
- Groundwater Main
- Raw Water Main

- Distribution Main
- Transfer Main
- Contours 5m
- Forecast ID Centres
- Somersby Industrial Estate
- Cockle Bay PSP

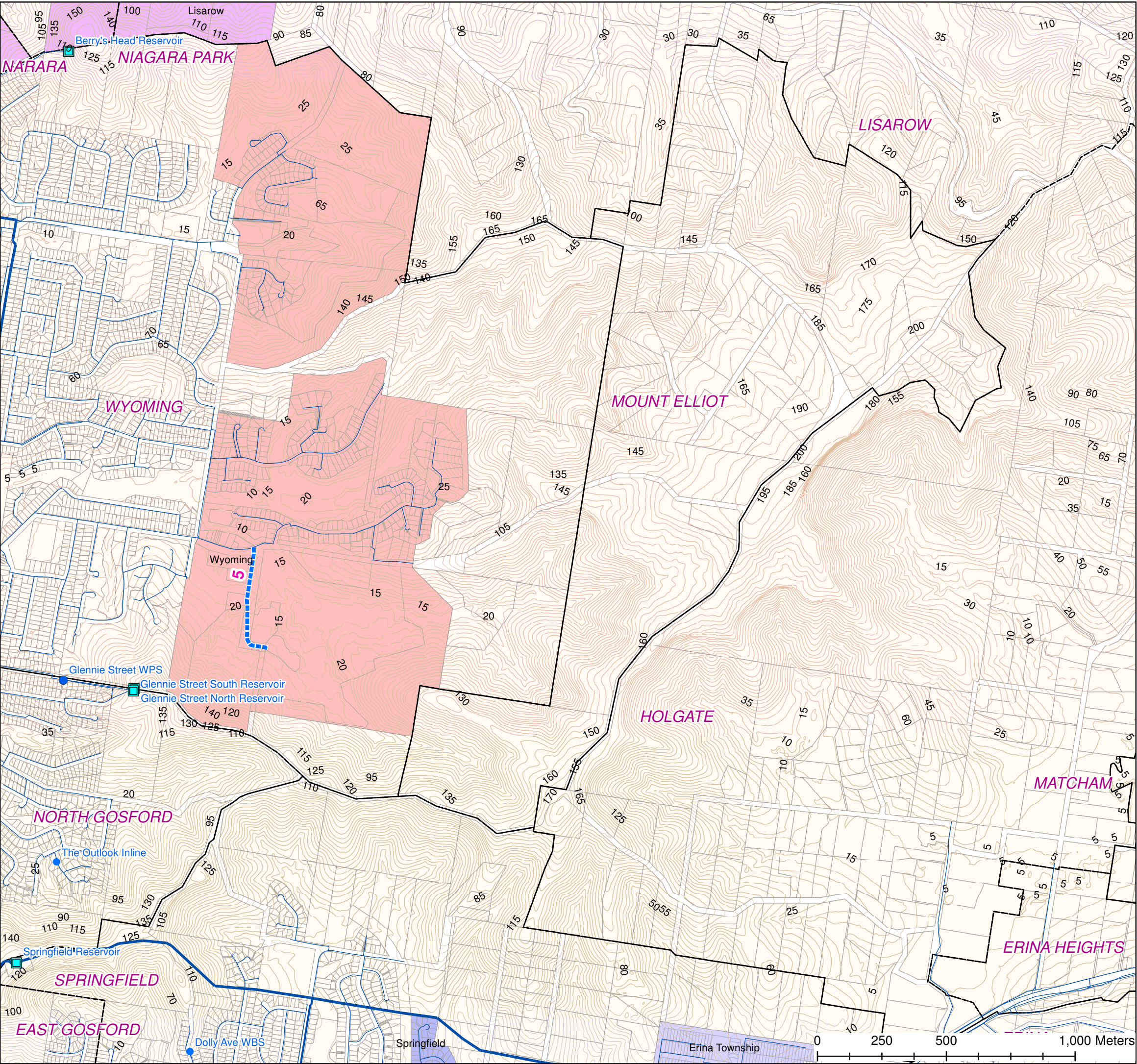
#### DSP Area, Part

- Erina Township
- Erina, 1
- Erina, 2
- Gosford City Centre
- Kariong
- Kincumber
- Lisarow
- Narara
- Niagara Park
- Springfield
- Wyoming



Mayya Podsoonnaya  
Date: 22/07/2019  
Source: Central Coast Council  
Projection: GDA\_1994\_Transverse\_Mercator; GCS\_GDA\_1994  
Created using ArcGIS 10.3.1 using ArcMap

**DISCLAIMER**  
These maps have been compiled from various sources and the publisher and/or contributors accept no responsibility for any injury, loss or damage arising from the use, error or any omission therein. While all care is taken to ensure a high degree of accuracy, users are invited to notify Councils Geospatial Group of any map discrepancies. No part of this map may be reproduced without prior written permission.  
© 2017 Department of Finance, Services & Innovation,  
© 2018 Central Coast Council, All Rights Reserved.





CENTRAL COAST COUNCIL  
PROPOSED WATER ASSETS DSP SOUTH

Legend

Proposed Water Mains

- 100 mm
- 150 mm
- 200 mm
- 250 mm
- 300 mm
- 375 mm

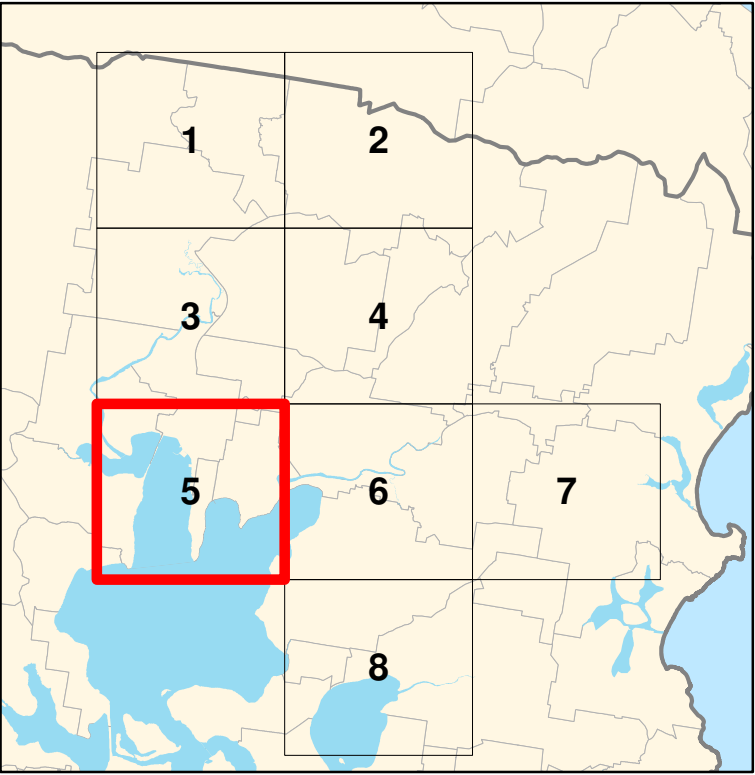
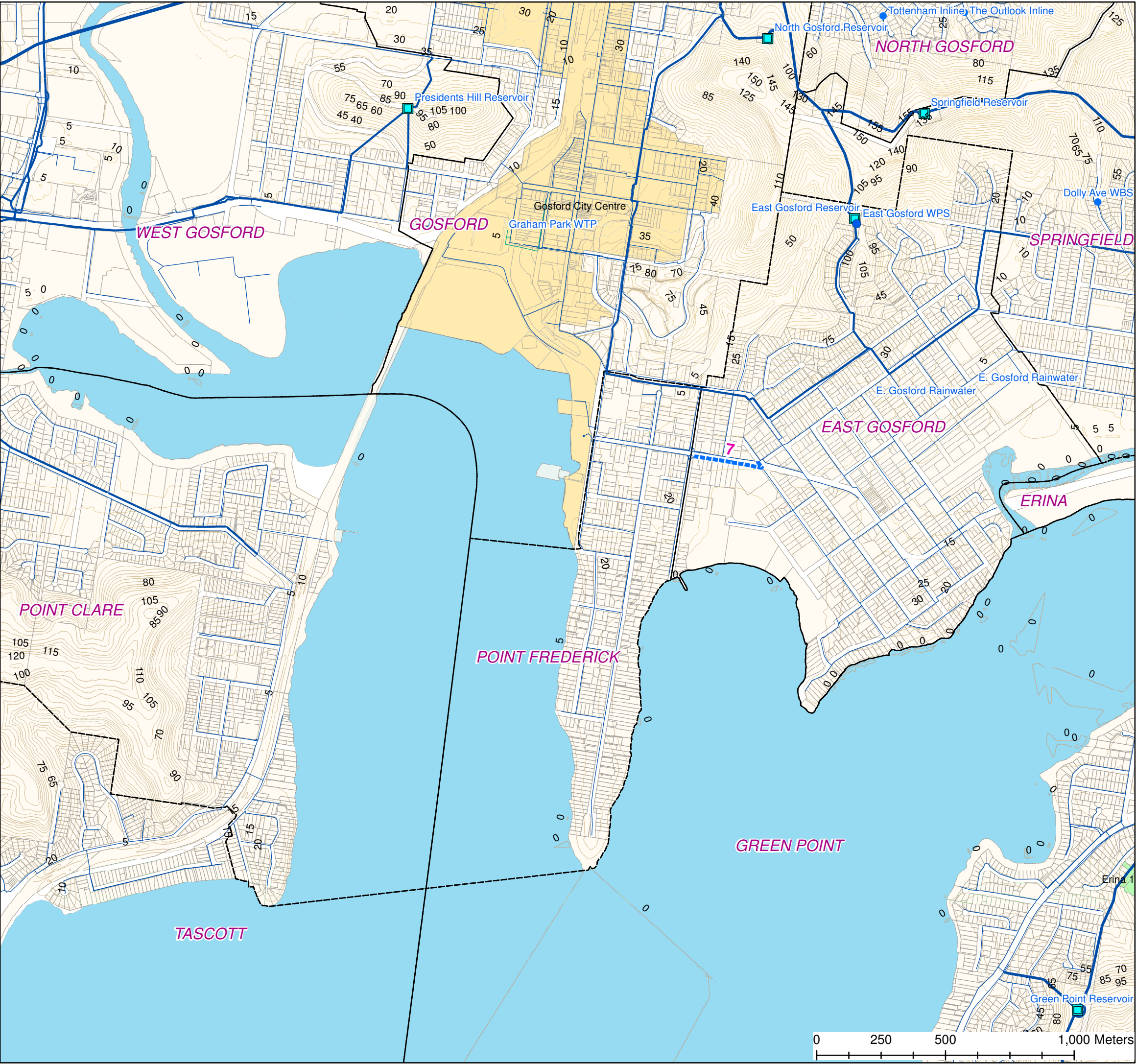
Water Network Structures

- Booster Pump Station
- Pump Station
- Raw Water Pump Station
- Reservoir
- Treatment Plant
- Weir

Existing Water Mains

- Reticulation Main
- Groundwater Main
- Raw Water Main

- Distribution Main
- Transfer Main
- Contours 5m
- Forecast ID Centres
- Somersby Industrial Estate
- Cockle Bay PSP
- DSP Area, Part
- Erina Township
- Erina, 1
- Erina, 2
- Gosford City Centre
- Kariong
- Kincumber
- Lisarow
- Narara
- Niagara Park
- Springfield
- Wyoming



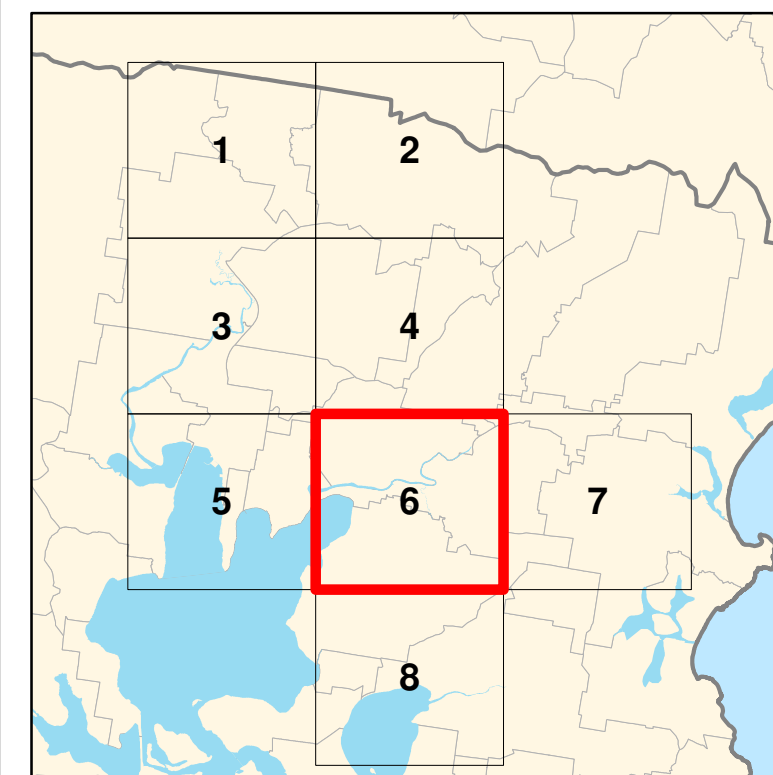
Mayya Podsoonnaya  
Date: 22/07/2019  
Source: Central Coast Council  
Projection: GDA\_1994\_Transverse\_Mercator; GCS\_GDA\_1994  
Created using ArcGIS 10.3.1 using ArcMap

**DISCLAIMER**  
These maps have been compiled from various sources and the publisher and/or contributors accept no responsibility for any injury, loss or damage arising from the use, error or any omission therein. While all care is taken to ensure a high degree of accuracy, users are invited to notify Councils Geospatial Group of any map discrepancies. No part of this map may be reproduced without prior written permission.  
© 2017 Department of Finance, Services & Innovation,  
© 2018 Central Coast Council, All Rights Reserved.





## Proposed Water Mains



**DISCLAIMER**  
These maps have been compiled from various sources and the publisher and/or contributors accept no responsibility for any injury, loss or damage arising from the use, error or any omission therein. While all care is taken to ensure a high degree of accuracy, users are invited to notify Councils Geospatial Group of any map discrepancies. No part of this map may be reproduced without prior written permission.  
© 2017 Department of Finance, Services & Innovation,  
© 2018 Central Coast Council, All Rights Reserved.



## CENTRAL COAST COUNCIL PROPOSED WATER ASSETS DSP SOUTH

### Legend

#### Proposed Water Mains

- 100 mm
- 150 mm
- 200 mm
- 250 mm
- 300 mm
- 375 mm

#### Water Network Structures

- Booster Pump Station
- Pump Station
- Raw Water Pump Station
- Reservoir
- WTP
- Treatment Plant
- Weir

#### Existing Water Mains

- Reticulation Main
- Groundwater Main
- Raw Water Main

Distribution Main

Transfer Main

Contours 5m

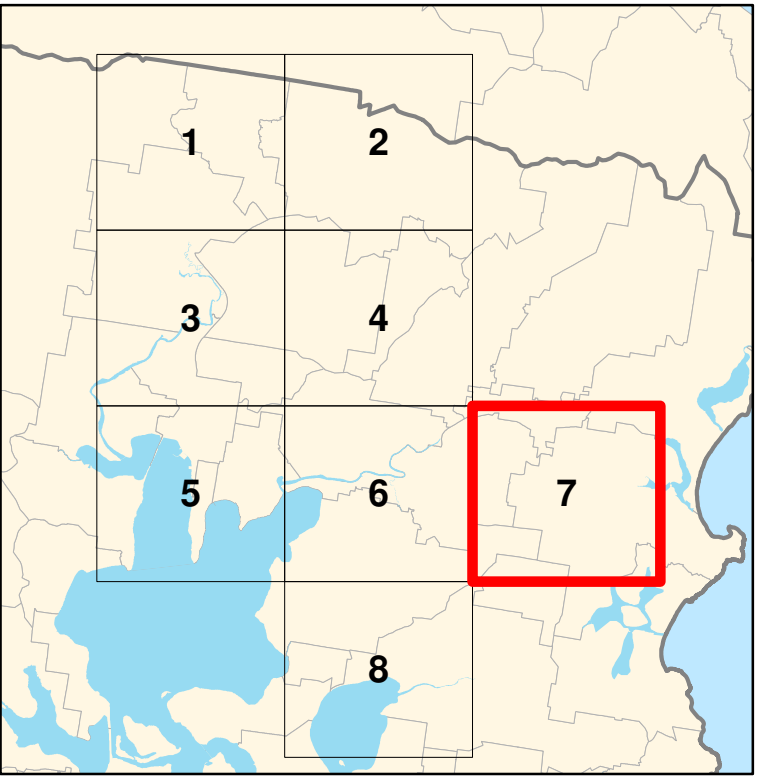
Forecast ID Centres

Somersby Industrial Estate

Cockle Bay PSP

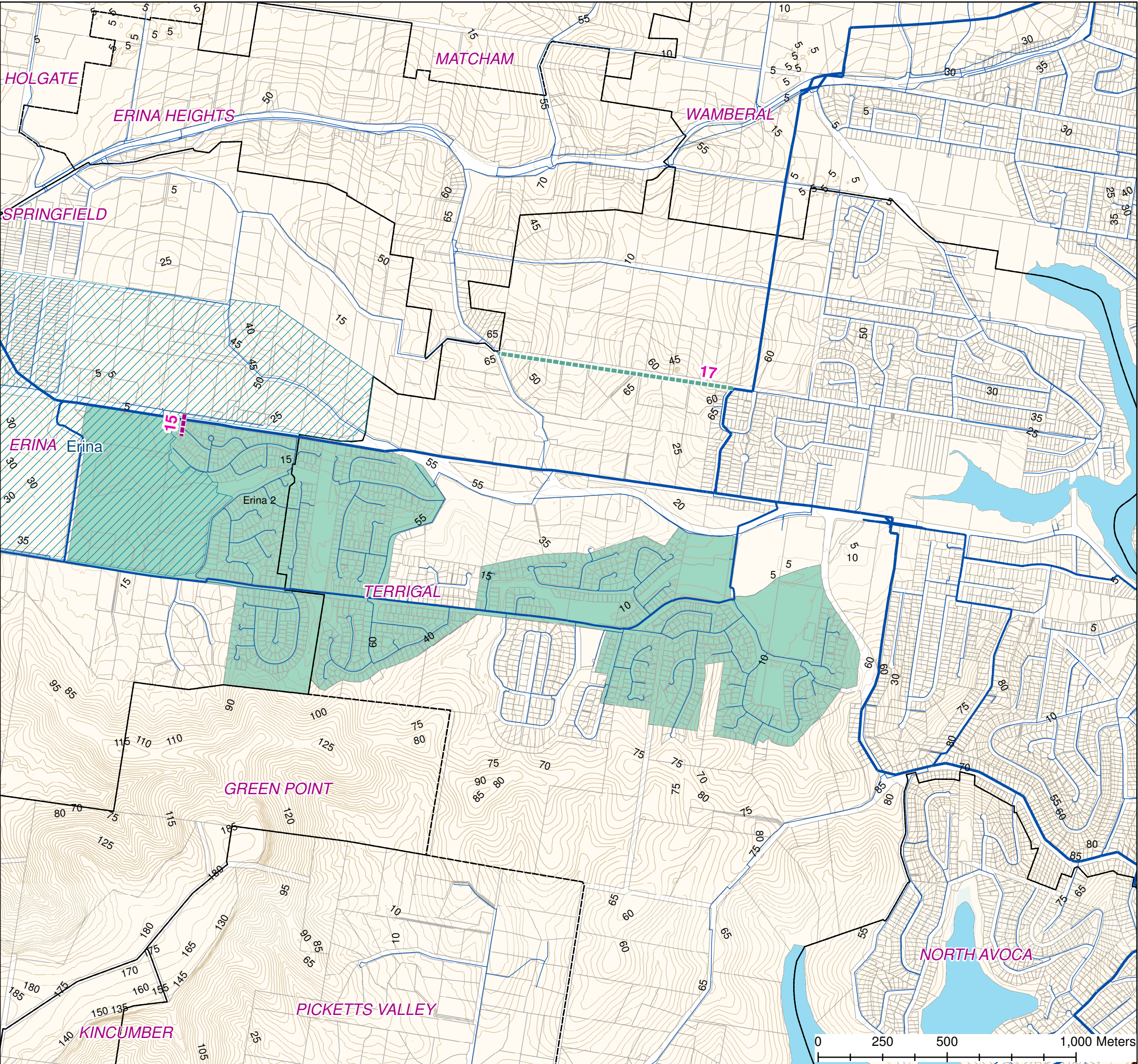
#### DSP Area, Part

- Erina Township
- Erina, 1
- Erina, 2
- Gosford City Centre
- Kariong
- Kincumber
- Lisarow
- Narara
- Niagara Park
- Springfield
- Wyoming



Mayya Podsoonnaya  
Date: 22/07/2019  
Source: Central Coast Council  
Projection: GDA\_1994\_Transverse\_Mercator; GCS\_GDA\_1994  
Created using ArcGIS 10.3.1 using ArcMap

**DISCLAIMER**  
These maps have been compiled from various sources and the publisher and/or contributors accept no responsibility for any injury, loss or damage arising from the use, error or any omission therein. While all care is taken to ensure a high degree of accuracy, users are invited to notify Councils Geospatial Group of any map discrepancies. No part of this map may be reproduced without prior written permission.  
© 2017 Department of Finance, Services & Innovation,  
© 2018 Central Coast Council, All Rights Reserved.





# CENTRAL COAST COUNCIL PROPOSED WATER ASSETS DSP SOUTH

## Legend

### Proposed Water Mains

- 100 mm
- 150 mm
- 200 mm
- 250 mm
- 300 mm
- 375 mm

### Water Network Structures

- Booster Pump Station
- Pump Station
- Raw Water Pump Station
- Reservoir
- Treatment Plant
- Weir

### Existing Water Mains

- Reticulation Main
- Groundwater Main
- Raw Water Main

Distribution Main

Transfer Main

Contours 5m

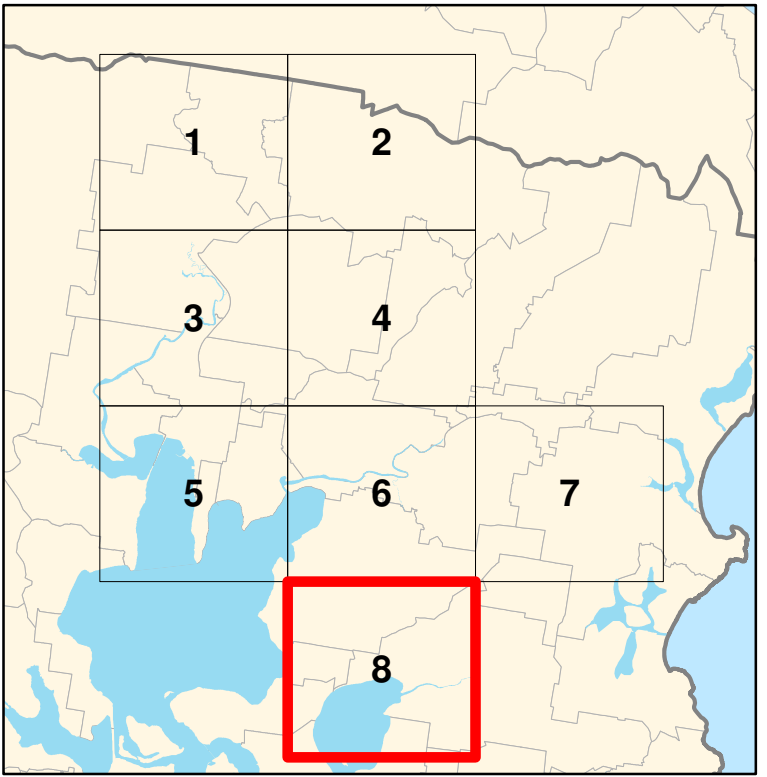
Forecast ID Centres

Somersby Industrial Estate

Cockle Bay PSP

### DSP Area, Part

- Erina Township
- Erina, 1
- Erina, 2
- Gosford City Centre
- Kariong
- Kincumber
- Lisarow
- Narara
- Niagara Park
- Springfield
- Wyoming



Mayya Podsoonnaya  
Date: 22/07/2019  
Source: Central Coast Council  
Projection: GDA\_1994\_Transverse\_Mercator; GCS\_GDA\_1994  
Created using ArcGIS 10.3.1 using ArcMap

**DISCLAIMER**  
These maps have been compiled from various sources and the publisher and/or contributors accept no responsibility for any injury, loss or damage arising from the use, error or any omission therein. While all care is taken to ensure a high degree of accuracy, users are invited to notify Councils Geospatial Group of any map discrepancies. No part of this map may be reproduced without prior written permission.  
© 2017 Department of Finance, Services & Innovation,  
© 2018 Central Coast Council, All Rights Reserved.

