



Gosford
Regional
Gallery

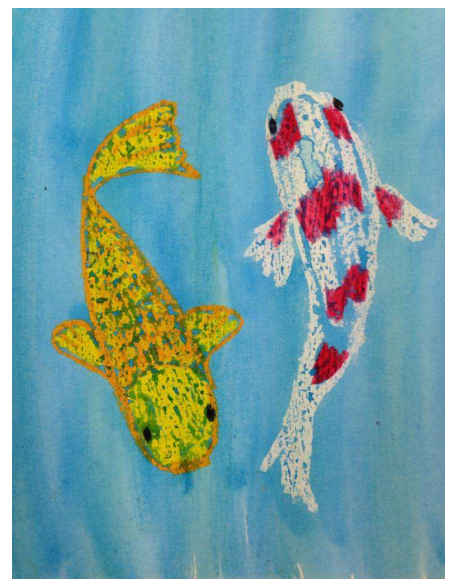
Primary Schools Tours and workshops at the Gosford Regional Gallery and Edogawa Commemorative Gardens



Located on the shores of Caroline Bay, East Gosford, Gosford Regional Gallery comprises three exhibition spaces and presents a dynamic program of traditional and contemporary exhibitions, workshops, talks and tours. **General Admission is free** and the stunning Japanese Edogawa Commemorative Garden perfectly compliments the gallery spaces, offering a tranquil and inspirational setting in which to engage in art-appreciation activities.

The Gosford Regional Gallery conducts a number of suitable programs for students in stages 1-3, these programs offer a very affordable excursion. In addition to the exhibitions at the Gallery these programs are based around art making, Asian cultures, Aboriginal culture and literacy. Schools are also able to utilise the wetlands and boardwalk around Caroline bay in a self-guided exercise with drawing materials provided. There are also excellent playground facilities at Elizabeth Ross Park which can be used in the lunch break.

The Gallery is able to tailor-make a full day or half day excursion for any size group from 10 to 100 students



Plan your excursion to the Gosford Regional Gallery and Japanese Gardens

The typical full-day excursion would include a guided tour of the exhibitions, a guided tour of the Japanese Gardens, an art making workshop with a professional artist and an age appropriate worksheet / activity based on a current exhibition or curriculum area. Half-day excursions are also possible. Some of the art workshops available include Japanese kites, Japanese printing, Japanese fish, Aboriginal painting, Native clay animals, Self portraits, Cartooning or we can make something unique to your group.

Costs per Student

Guided tours of the Gallery and Japanese Gardens	\$3	1- 2 hour excursion
Guided Tours and activity sheets and drawing materials	\$5	Half day excursion
Art Workshop, Guided Tours and activity sheets and all materials	\$13 - \$15 depending on class	All day excursion



Typical schedule

Wyong Christian School 5/12/14			
56 Students			
	Group 1	Group 2	Group 3
9:15	arrive	arrive	arrive
9:30	Gallery Guided Tour	Workshop	Foyer Activity
9:45	Gallery Guided Tour	Workshop	Foyer Activity
10:00	Gallery Guided Tour	Workshop	Foyer Activity
10:15	Gallery Guided Tour	Workshop	Morning tea
10:30	Morning tea	Morning tea	Garden Tour
10:45	Workshop	Gallery Guided Tour	Garden Tour
11:00	Workshop	Gallery Guided Tour	Garden Tour
11:15	Workshop	Gallery Guided Tour	Lunch
11:30	Workshop	Gallery Guided Tour	Lunch
11:45	Lunch	Lunch	Lunch
12:00	Lunch	Lunch	Workshop
12:15	Lunch	Lunch	Workshop
12:30	Garden Tour	Foyer Activity	Workshop
12:45	Garden Tour	Foyer Activity	Workshop
13:00	Garden Tour	Foyer Activity	Gallery Guided Tour
13:15	Foyer Activity	Garden Tour	Gallery Guided Tour
13:30	Foyer Activity	Garden Tour	Gallery Guided Tour
13:45	Foyer Activity	Garden Tour	Gallery Guided Tour
14:00	depart	depart	depart

Visiting the Gosford Regional Gallery:

The Gallery is located at 36 Webb Street, East Gosford. It is open from 9.30 am – 4.30 pm Monday to Sunday and public holidays as advertised. Ample free parking is available in Council carparks situated in front of the Gallery. Disabled parking and ramp access is available at the front of the building.

To book your visit:

Please download the School booking form and send it to the Gallery. A Gallery staff member will contact you and confirm the details of your visit.

Gallery contact

36 Webb St, East Gosford 2250
 P: (02) 4304 7550
 E:Gallery@centralcoast.nsw.gov.au