

LAYCOCK STREET COMMUNITY THEATRE

Technical Specifications

Central
Coast
Council



Updated March 2021

Contents

Topic	Page
General Information & Seating	2
Loading Dock	3
Stage Dimensions, Loading & Machinery	4
Rigging, Ladders & EWP	5
Fly Line Measurements	6
Venue plan and section	7
Stage Management & Drapery	8
Dressing Room Facilities	9
Staging & Projection/AV	10
Lighting Facilities	11 – 12
Standard LX Plan & Lamp List	13 – 14
Audio Facilities	15 – 18

Venue Details

Address – 5 Laycock St, Wyoming, NSW, 2250
Postal Address – P.O. Box 21, Gosford, NSW, 2250
Administration – (02) 4304 7419

Team Leader Operations –

Dean Harrington dean.harrington@centralcoast.nsw.gov.au
Mobile – 0409 321472
Direct Admin – (02) 4304 7141

LAYCOCK STREET COMMUNITY THEATRE

Technical Specifications

Central
Coast
Council



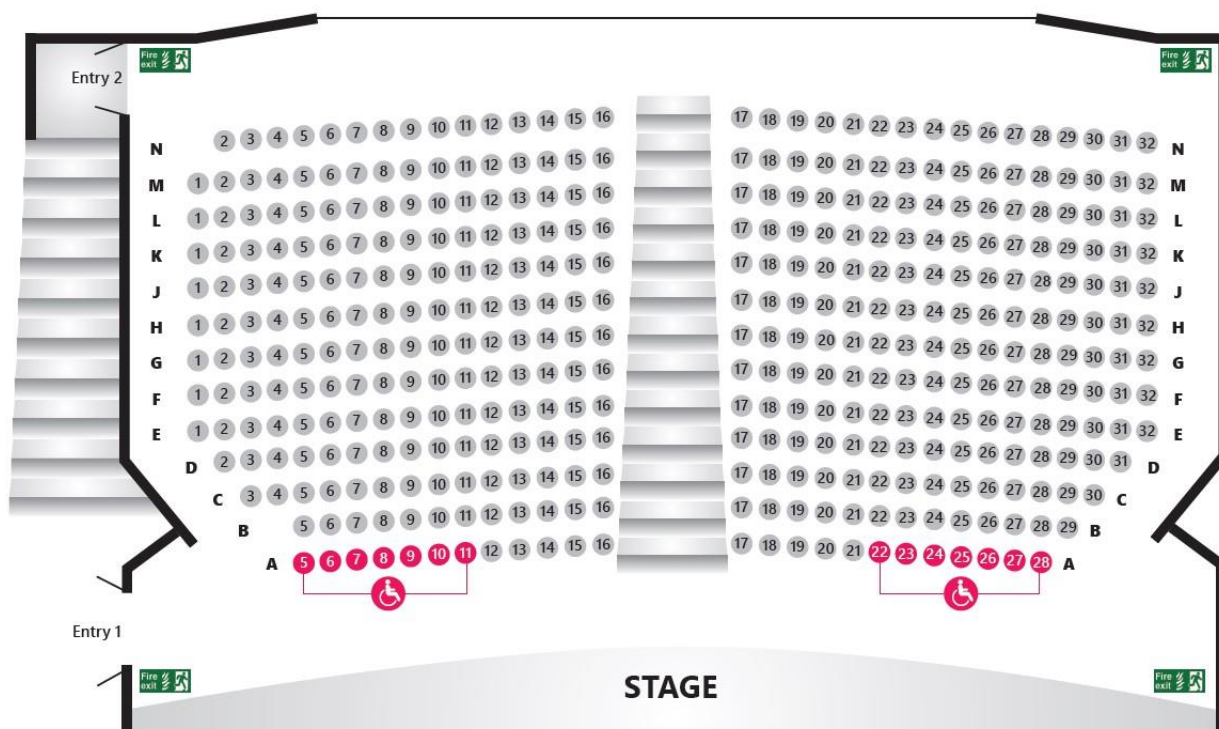
GENERAL INFORMATION

The Laycock St Theatre is a proscenium arch form with a raked auditorium and an orchestra pit, which is normally covered to provide a thrust area.

SEATING

Total Seats – 396

Minus Auditorium Sound Desk position kills – 392 (N17 – 20 on request)



ACCESSIBILITY

The auditorium is accessible via the main entrance. The stage is accessible via a platform lift on P side.

LAYCOCK STREET COMMUNITY THEATRE

Technical Specifications



ASSISTED LISTENING

An induction loop system operates in the auditorium. Patrons are advised to select the T switch to pick up program in theatre.

ORCHESTRA PIT

Dimensions are 8m x 3.5m. Access via stairs from P & OP side.

Depth from stage level 2.7m

Max Capacity – 24 persons

FIRE CURTAIN - The fire curtain is located immediately upstage of the proscenium.

Released from: P and OP downstage corners

Winch up: Motorised from P corner

Fire Curtain travel must not be impeded by sets or obstructions.

LOADING DOCK AREA

Equipment is brought into the theatre via the loading dock situated on the southern side of the building, which opens directly onto P side of stage (access from Laycock Street). Vehicles are not permitted to park in this area during performances due to evacuation and fire services access. They must be moved at the latest 1 hour before a performance. Theatre staff can advise of the nearest available parking for large vehicles.

Bollards are in place to prevent unauthorised parking. Theatre staff have access to keys to remove these bollards.

Height of dock from street level - 830mm

Height - 2.7m

Width - 2m

Diagonal - 3.3m



STAGE DIMENSIONS

Proscenium:	Width	12m
	Height	5 m
Stage Width:	Wall to wall	22.5 m
	Centre Stage to P side wall	11.3 m
	Centre Stage to OP Fly rail	11.2 m
Stage Depth:	Setting line to back wall	8550mm
	Setting line to last set of lines	7780mm
	Setting line to edge of thrust	2360mm
	(Setting line is considered to be the upstage edge of Fire curtain)	

Stage Floor: 2 layers of 12mm OSB Board on sprung 75 x 50mm Hi-load MGP battens at 300mm centres. 6.4mm Tempered Masonite surface painted low sheen black. No Rake.

There is a recessed cable tray with covers surrounding the performance area.

Note: Masking tape is not to be used on the stage floor. PVC electrical tape and gaffer tape is acceptable if it is removed after the event. Areas painted by hirer must be returned to black. Paint type must be approved before use.

STAGE LOADING - 7.5kPa Uniformly Distributed Load/4.5kN Concentrated Load

STAGE MACHINERY

17 single purchase, 4 line counterweight sets are installed on OP wall. Flown from stage level OP side. Each set has a WLL of 300kg distributed. Maximum 100kg point load.

Lines 18 - 22 are connected to 5 x Jands H250P-V Motorised Hoists. Each hoist has a WLL of 350kg distributed. Maximum 100kg point load.

All lines are Prolyte H20LB Ladderbeam Truss battens (15m length)

Downstage of the Proscenium arch and above the forestage/orchestra pit, there is a single length of CSL22" concert box truss supported from two points by two inverted chain hoists (Stagemaker SR10 SWL 1000kg each with AXIOM BCHC 4 Motor Controller). This truss can be used as an additional FOH lighting position.

LAYCOCK STREET COMMUNITY THEATRE

Technical Specifications

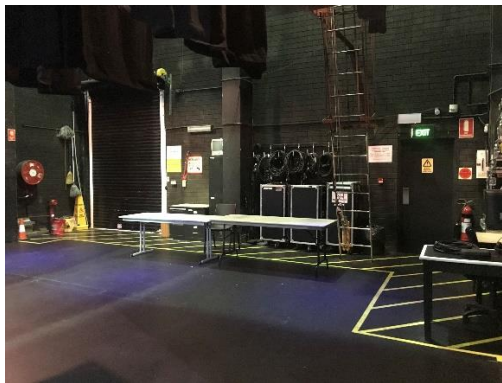
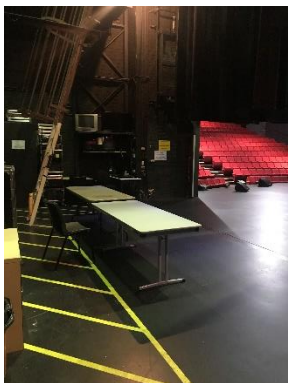
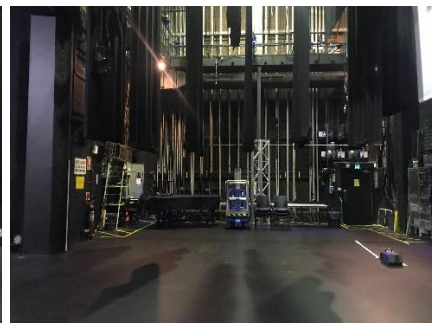
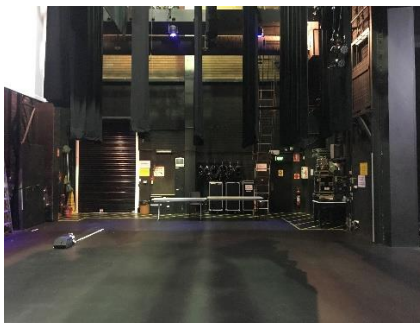
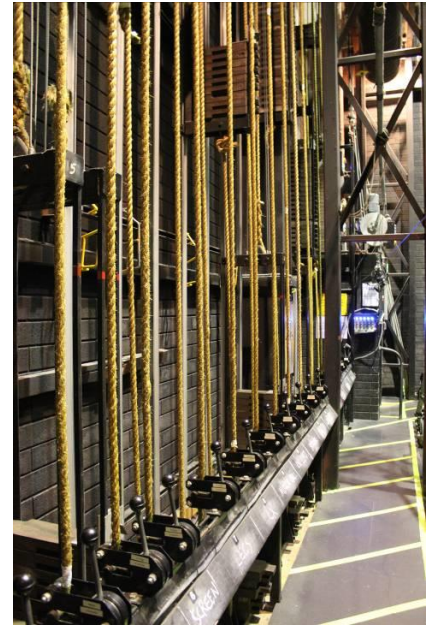
Central
Coast
Council

RIGGING EQUIPMENT

- 20 x 5m SWR droppers 300kg WLL Black PVC
- 14 x 4m SWR droppers 300kg WLL Black PVC
- 10 x 3m SWR droppers 400kg WLL Black
- 10 x 2m SWR droppers 400kg WLL Black
- 10 x 1m SWR droppers 358kg WLL Black PVC
- 32 x Attachment (yuppie) straps

LADDERS & EWP

- 1 x Genie GR20 Runabout Aerial Work Platform (Stage)
- 1 x Haulotte Star 10 Aerial Work Platform (FOH perch and truss access)
- 1 x 7.56m fibreglass extension ladder
- 1 x 4.2m single sided aluminium A frame ladder
- 1 x 3.6m double sided fibreglass A frame ladder
- 1 x 2.4m double sided fibreglass A frame ladder
- 1 x 2.1m double sided fibreglass A frame ladder
- 1 x 1.8m double sided fibreglass A frame ladder
- 1 x 1.2m double sided fibreglass A frame ladder



FLY LINE MEASUREMENTS

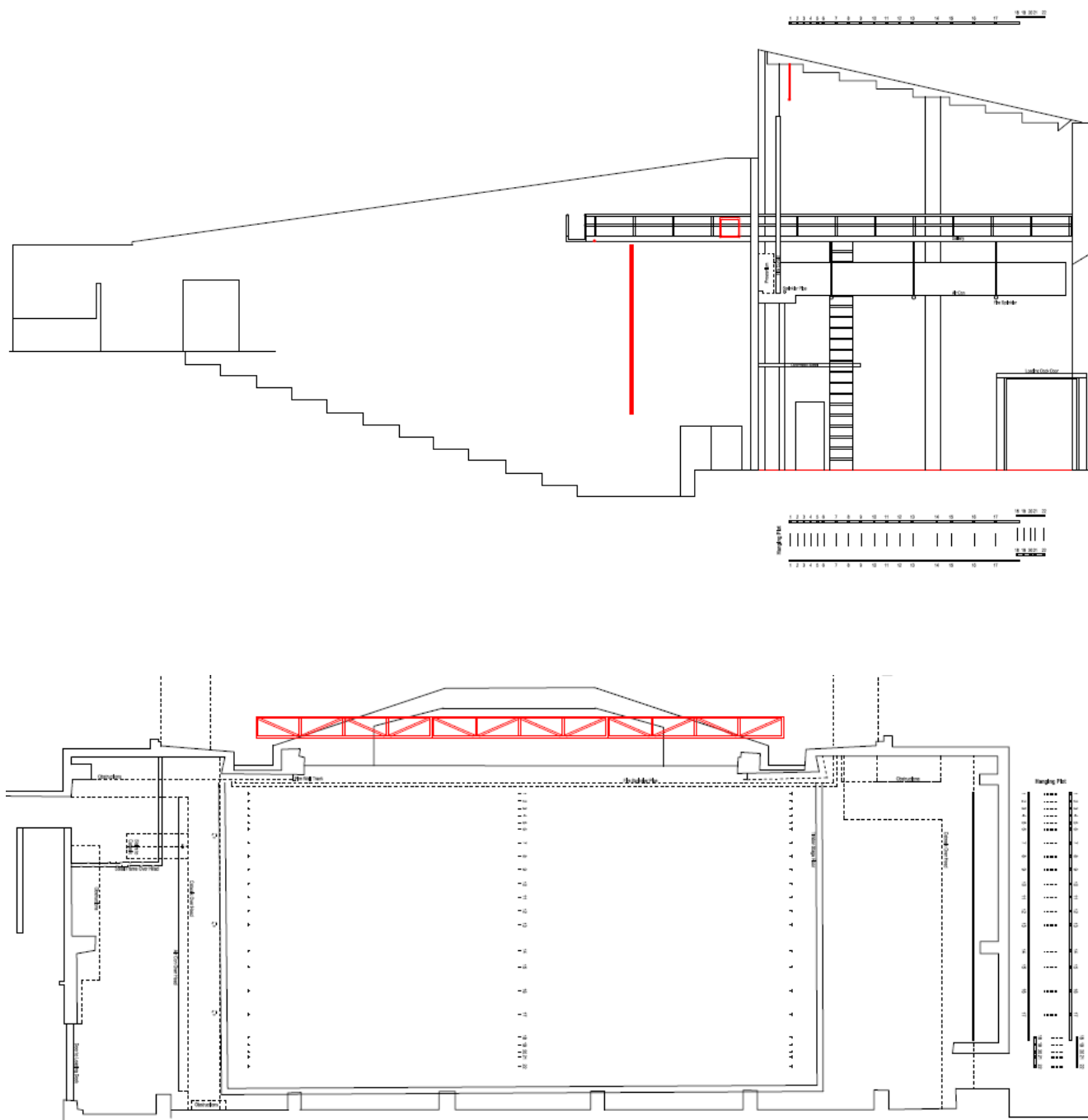
Line Number	From Setting Line (mm)	Max Drift - Stage Floor To Roof (mm) No Grid	Standard Rig	Line Weight (Kgs)
1	350	11350	House Curtain	8
2	550	11060	Black Scrim	4
3	750	11030	2m Legs & 1m Border	4
4	950	10890	LX 1	16
5	1150	10980		
6	1300	10890	Projection Screen	7
7	1700	10800	2m Legs	3
8	2000	11100		
9	2450	10950	Mirror Ball	4.5
10	2750	10890	LX 2 & 2m Legs	
11	3150	10700		
12	3550	10550	6m Black Tabs (1/2 Stage)	8.5
13	3850	10150	LX 3 & 3m Legs	21.5
14	4600	10410		
15	5180	9850	LX 4 & 3m Legs	18
16	5780	10210	2m Flat Border	3
17	6350	9590	LX 5 & 3m Legs	21
18 (H250P Hoist)	6980	9660	2m Border	N/A
19 (H250P Hoist)	7180	9580		
20 (H250P Hoist)	7380	9590		
21 (H250P Hoist)	7520	9240	6m Black Tabs (track)	N/A
22 (H250P Hoist)	7780	9150	White Cyclorama & Black Smother	N/A

LAYCOCK STREET COMMUNITY THEATRE

Technical Specifications

Central
Coast
Council

VENUE PLAN & SECTION (detailed drawing and CAD files available on request)



STAGE DRAPERY

Type	Fullness	Colour/Material	Width	Height	Quantity	Standard Rig
House	50%	Burgundy Velvet	7m	5.5m	2	Line 1 (track optional)
Legs	Flat	Black Wool	3m	6m	12	
Legs	50%	Black Wool	3m	6m	18	Lines 3, 7, 10, 13, 15 & 17
Border	Flat	Black Wool	14m	1m	2	Line 3
Border	Flat	Black Wool	14m	2m	2	Line 16 & 18
Border	50%	Black Wool	14m	2m	2	
Smother	Flat	Black Wool	15m	6m	1	Line 22 behind Cyc
Tabs	80%	Black Wool	7m	6m	2	Line 12
Tabs	50%	Black Wool	7m	6m	2	Line 21 on track
Cyclorama	Flat	White Filled Cloth	15m	6m	1	Line 22
Scrim	Flat	Black Sharkstooth	15m	5.5m	1	Line 2

STAGE MANAGER'S SYSTEM

Paging to dressing rooms from Prompt corner.

Show Relay to dressing rooms and foyer.

House Lighting control from P Side.

TALKBACK

1 x Jands Ezicom 4 ch Master Station

10 x Jands beltpacks

DT109, DT 108 Beyer and Jands headsets to suit

1 x Clear Com Freespeak 2 Wireless Comms System

4 x Clear Com Freespeak 2 Beltpacks with CC-400 Headsets

STAGE MONITOR SYSTEM

Stage view camera from Bio Box

2 stage monitors (P & OP)

Relay to dressing rooms, foyer, orchestra pit & stage door.

Conductor View camera feed to SM desk with split for extra monitors.

LAYCOCK STREET COMMUNITY THEATRE

Technical Specifications



DRESSING ROOMS

There are two large dressing rooms with lit makeup mirrors, benches, costume racks, toilets and showers.

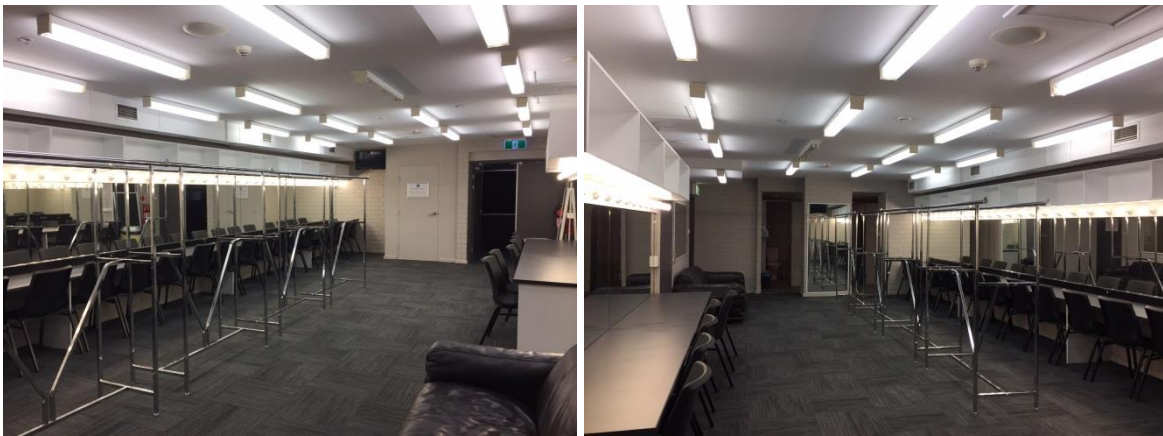
1 x Private Dressing Room/Production office

An 8kg Washing Machine and 9kg Dryer are available for use.

P side dressing room is made up of smaller areas, which can be divided into separate rooms. 60 person total capacity.



OP side dressing room dimensions 11m x 5m. 68 person capacity.



INTERNET ACCESS

A Guest WI-FI network operates in the theatre.

LAYCOCK STREET COMMUNITY THEATRE

Technical Specifications



KEYBOARD INSTRUMENTS

1 x Yamaha C7 Grand Piano
1 x Yamaha P120 Electric Piano

(Additional hire charge applies for pianos and tuning)

(Based on stage in Auditorium. Additional charges apply for Piano moving)

ORCHESTRAL FURNITURE

100 black armless chairs.
20 Music stands with sconces.

STAGING

DQ Performer Deck - 6 x 2400 x 1200mm units with 300mm leg/wheels, 600mm & 900mm leg options
Black Velvet Skirting and Stair treads available
Please advise ASAP if risers are required. *(Additional fees apply)*

PROJECTION/AV

Screens

1 x Av Stumpfl Monoblox64 – 24'x13.5' 16:9 Front/Rear Projection Screen (image size 732x411cm with 10cm border)
1 x Av Stumpfl Monoblox64 – 20'x11'3" 16:9 Front/Rear Projection Screen (image size 610x343cm with 10cm border)
1 x Av Stumpfl Monoblox64 - 14'x7'10" 16:9 Front/Rear Projection Screen (image size 427x240cm with 10cm border)
1 x Av Stumpfl Monoblox32 - 12'x6'9" 16:9 Front/Rear Projection Screen (image size 366x206cm with 10cm border)

Playback

1 x Roland V-800HD Multi Format Video Switcher
1 x Roland V-1SDI 3G-SDI Video Switcher
1 x Denon DN-500BD Blu Ray Player
1 x Apple Macbook Pro 15" 2019 – 2.3Ghz i9/16GB 2400MHz DDR4/Radeon Pro 560X 4GB/Intel UHD Graphics 630 1536MB/512GB SSD
1 x Apple Macbook Pro 16" 2020 – 2.3GHz/Radeon Pro5500M/32GB/1TB SSD

Projectors

1 x Panasonic PT-DZ21K2 Projector, WXUGA, 20,000 ANSI Lumens (Auditorium)
1 x Panasonic PT-VZ575NA Projector, WXUGA, 4,500 ANSI lumens (Don Craig Room)
1 x Epson EBX31 Projector, XGA, 3,300 ANSI lumens (various)

Additional Hire Charges apply for all projectors

LAYCOCK STREET COMMUNITY THEATRE

Technical Specifications

Central
Coast
Council

LIGHTING FACILITIES

CONTROL

Auditorium

ETC GIO 4K Lighting Console
Fader Wings 1 x 2x20/1 x 2x10
iPad remote control



DIMMERS

- 6 x Jands HP12-WMTR Dimmer racks (Total 72 x 2.4Kw)
- 7 x Jands HP6-WM Dimmer racks (Total 42 x 6Kw)
- 2 x Jands HUB-XCD 24 Channel Contactor/Dimmer Power Control System

Dimmers are located on Catwalk level OP side. 1 x HP12 and 1 x HP6 are located at stage level for floor circuits (OP side)

POWER OUTLETS & DISTRIBUTION

- 2 x 50amp 3 phase outlets located OP side downstage
- 2 x Jands PDS12 3 phase Power Distribution System

DMX

- 2 x DMX lines from Bio Box to OP side downstage.
- 3 x LSC MDRX/R DMX splitter feeding all dimmers.
- 1 x Jands DD8 Opto-Isolated DMX Splitter
- 1 x DMX King Node 4 Universe

FIXED LIGHTING POSITIONS

FOH	FOH Catwalk	Length	14 m
		Throw to setting line	8.75 m
		Angle to setting line	45 deg
		Patch outlets	38 x 10amp
	Truss	Length	14 m
		Throw to setting line	varies with height
		Angle to setting line	varies with height
		Patch outlets	26 x 10amp
	P & OP Perches	Throw to setting line	6.5m approx. varies with height

- Stage** There are 4 wired circuit tube bars which feed direct to dimmers
Line 4, 13, 15, and 17.
LX can be accommodated on any fly bar.

Floor Booms

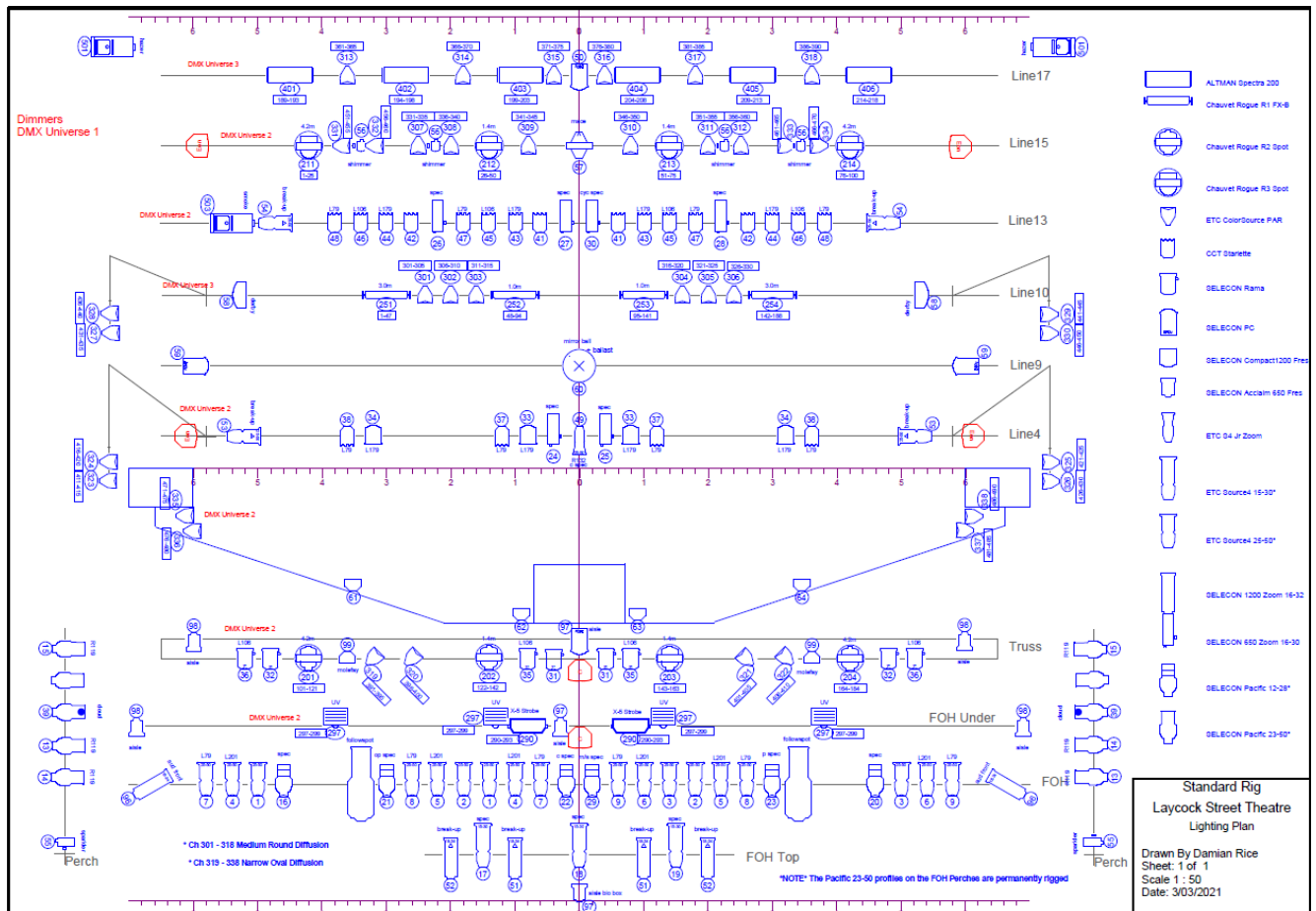
- 8 x Square base plates with 2m & 3m tall 50mm OD pipe with boom arms
- 4 x DQ Global GT A33L300 300mm x 3m Tri Truss with Ø1000mm round base plates

LAYCOCK STREET COMMUNITY THEATRE

Technical Specifications

Central
Coast
Council

STANDARD LX PLAN (detailed drawing available on request)



LAYCOCK STREET COMMUNITY THEATRE

Technical Specifications



LAMP LIST

Type	Qty	Wattage
------	-----	---------

PROFILES

ETC Source Four Zoom 25/50	x 30	750w
ETC Source Four Zoom 15/30	x 4	750w
ETC Source Four Jnr Zoom 25/50	x 10	575w
ETC Source Four 90deg Fixed Angle	x 4	750w
Selecon 1200 Zoomspot 18/34	x 4	1.2K
Selecon Pacific 23/50	x 10	1K
(NOTE – Pacific 23/50 permanently rigged to FOH perches)		
Selecon Pacific 12/28	x 6	600w
Selecon Pacific 12/28	x 6	1K

FRESNELS/PC

CCT Starlette	x 16	1K
Selecon Rama 175 HP	x 12	1.2K
Selecon Compact 1200	x 4	1.2K
Selecon Acclaim 650 (DCR)	x 8	650w
Selecon PC 1200	x 4	1.2K

LED

ETC Colour Source Par	x 40	110w
Chauvet Pro Rogue R2 Spot Moving Head	x 8	300w
Chauvet Pro Rogue R3 Spot Moving Head	x 4	300w
Chauvet Pro Rogue R1 FX-B	x 4	200w
Altman Spectra Cyc 200 RGBA	x 12	200w

OTHER

Par 64	x 16	1K-110V	NSP/MD/WD
Selecon LUI 4 way Cyc units	x 8	1K	
SGM X5 LED Strobe	x 2	360w	

FOLLOW SPOTS

RJ Super Corrigan 1200 HMI	x 2	Located on FOH Catwalk
Clay Paki Shadow 1200	x 2	Located on FOH Catwalk
Strand Cadenza 2kw	x 1	Located Bio Box (No colour changer)

SMOKE/HAZE (Additional hire charge applies for all Smoke & Haze machines)

Jem ZR33 Hi Mass DMX Fog Machine

2 x Look Solutions Unique 2.1 Hazers

(Excessive use of fluid may incur additional charges)

LAYCOCK STREET COMMUNITY THEATRE

Technical Specifications

AUDIO FACILITIES

FOH LOUDSPEAKERS

L&R Arrays - d&b audiotechnik Qi Series (1 x QiSUB & 4 x Qi1 Line Array Loudspeakers per side)

Sub Bass System – 2 x d&b audiotechnik B2-SUB

Centre & Delay System – 2 x d&b audiotechnik Qi10 wide coverage loudspeakers

Stage Front Fill – 4 x d&b audiotechnik 8S loudspeakers



Additional Loudspeakers

4 x d&b audiotechnik M6 Monitor Loudspeakers (4 sends available with D6 Amplifiers)

2 x L'Acoustics 112P Loudspeakers

8 x db Technologies DVX DM12 self powered loudspeakers

2 x db Technologies SUB 18H Active Subwoofers

1 x db Technologies SUB 15H Active Subwoofer (Drum Fill)

4 x Dynacord AXM 12A Coaxial Powered Monitor Speakers

2 x QSC CQ8 Powered Speakers

4 x JBL EON612 Powered Speakers (Flown Sidefill D/S & U/S)

2 x JBL EONG215 Powered Speakers

4 x JBL EONG2 10 Powered Speakers

8 x Behringer Powerplay P1 Personal In-Ear Monitor Amplifier

NOTE –A separate foldback system can be operated with our CL1 console. This will require a separate audio technician.



AMPLIFIERS

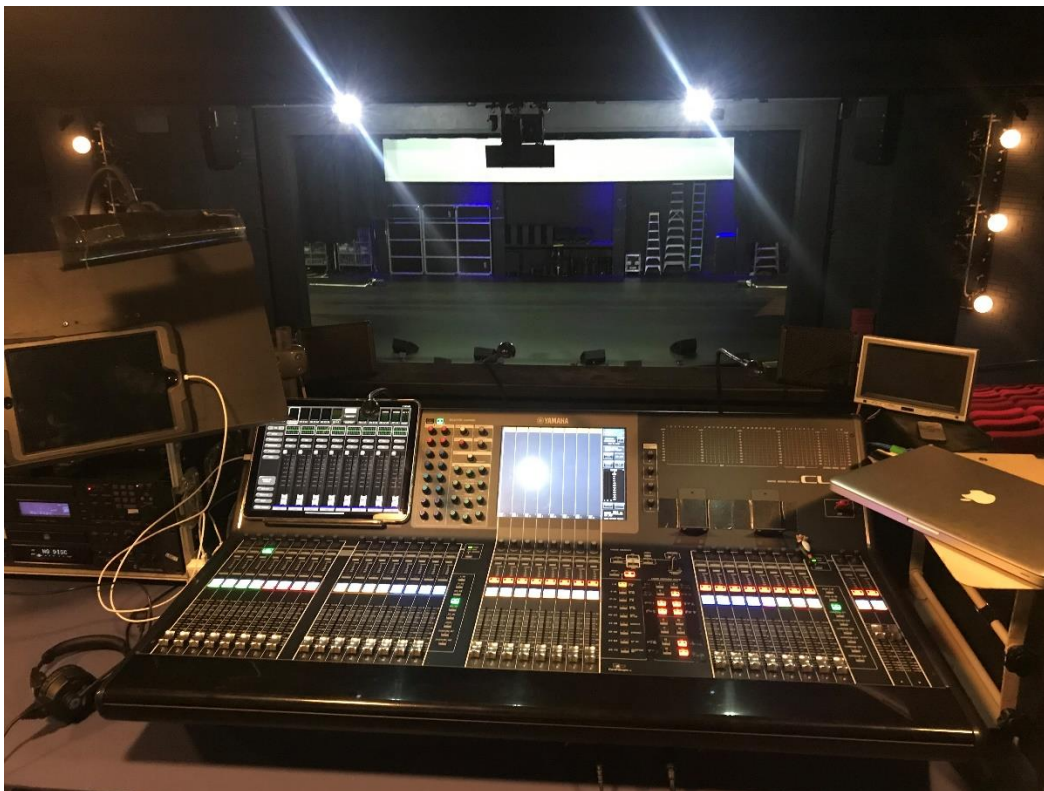
- 1 x d&b audiotechnik 30D Amplifier Controller (Qi1 loudspeakers)
- 1 x d&b audiotechnik D12 Amplifier/Controller (B2 Subs)
- 6 x d&b audiotechnik D6 Amplifier/Controller (QiSubs, Front Fill, Centre & M6 Foldback)

PROCESSING

- 3 x Yamaha Rio3224-D Stage Racks
- 1 x Yamaha Rio1608-D Stage Rack (Bio Box)

MIXING CONSOLES

- Yamaha CL5 Digital Mixing Console (FOH)
- Yamaha CL1 Digital Mixing Console (alternative FOH or Monitors)
- Yamaha MX12/6
- QSC Touchmix 16
- Allen & Heath GL2400 24ch Console
- iPad Pro with Yamaha Stagemix remote control/QSC Touchmix Remote
- (There is a fully redundant primary & secondary Dante Cat6A audio data network installed with multiple outlets on stage, bio box and orchestra pit for connection of CL consoles and RIO I/O racks)



PLAYBACK/RECORDING

1 x Apple Macbook Pro 13" – 2.9GHz i5/8GB/512GB SSD running QLab and Nuendo Live

1 x Denon DN-500C CD Player with iPod dock

1 x HHB CDR830 CD Recorder

MICROPHONES

Shure SM-58	x 6
Shure SM-57	x 6
Shure Beta 58	x 4
Shure SM-98A (3 x A98D Drum Mount)	x 4
Shure KSM27	x 2
Shure 55SH ("Elvis Mic")	x 1
Shure Microflex MX418/C Lecturn Microphone	x 1
Shure Microflex 202B/C Overhead Microphone	x 4
Shure Beta 52	x 1
Rode M5	x 4
Rode NT5	x 2
Audio Technica ATM350 clip on	x 2
Audio Technica ATM35cW (Wireless Version)	x 5
Audio Technica AT-33	x 4
DPA d:vote 4099 (piano, string ,universal mounts)	x 4
Audio Technica 4073 Shotgun	x 2
Audio Technica 877 Shotgun	x 2
Crown PCC	x 6

DI

Radial J48	x 2
Radial Pro D2 Stereo DI	x 2
dbx DI1	x 2
dbx DB12 Active DI	x 4
dbx DB10 Passive DI	x 2
Whirlwind PC DI	x 1
Radial ProAV2	x 1
LA Audio DI2	x 2

WIRELESS MICROPHONE EQUIPMENT

2 x Shure ULXD4Q Quad Receivers (L51 Band)
4 x Shure ULXD1 Bodypack Transmitters
4 x Shure ULXD2 Handheld Transmitters
6 x Shure QLXD4 Receivers (K52 Band)
6 x Shure QLXD1 Bodypack Transmitters
2 x Shure QLXD2 Handheld Transmitters

(Please Note: Additional Hire Charge Applies)

WIRELESS MICROPHONE CAPSULE SELECTION

12 x Shure SM58
5 x Shure Beta 58A
2 x Shure Beta 87
2 x DPA 2028 B-SL12028 Super cardioid Vocal
15 x DPA d:fine66 Dual Ear Omni Headsets
1 x DPA d:fine 6066 Dual Ear Omni Headset
16 x Shure WL-93T Omni Lavalier
1 x Shure WL51B Cardioid Lavalier

OTHER

XLR Mic Cables
Large assortment of adapters, looms & patch cables
Mic Stands (Booms, Short Booms & Straight)
Speaker Stands
Klotz 24/4 Smartlink 50m Multicore – run from stage to orchestra pit
8 and 12 way drop boxes

ANALOG PATCHING

40 mic lines from Orchestra Pit to Bio Box
20 mic lines from P Side to Bio Box

ALTERNATIVE MIXING LOCATIONS

The Yamaha CL5 console is situated in the open fronted bio box. This is an adequate listening position for the auditorium and is not enclosed.

There is an alternative mixing position in the last row of seating. (Seat kills N 17-20)

This option requires the physical removal of auditorium seats, which must also be withheld from sale at the box office. Please liaise early as possible should an auditorium operating position be required. Additional Charges apply.

LAYCOCK STREET COMMUNITY THEATRE

Technical Specifications

Central
Coast
Council

BIO BOX



FOH LIGHTING PERCH POSITIONS



LAYCOCK STREET COMMUNITY THEATRE

Technical Specifications

Central
Coast
Council

Fly Tower and Roof from P Side looking towards OP Side

