



Join in Children or Adult

Art Classes at

Gosford Regional Gallery and
The Entrance Gallery and Studio



TERM 2 - APRIL 2021

Bookings and payment can be made
online: www.trybooking.com/BOUCH

Gosford Regional Gallery
36 Webb Street, East Gosford

T: 02 4304 7550
E: galleries@centralcoast.nsw.gov.au
W: centralcoast.nsw.gov.au/galleries

The Entrance Gallery & Studio
Building C
Norberta St, The Entrance



Watercolour with Anne Brack

This class is suitable for all students, from beginners to advanced. Students will be able to work on their own projects and will receive individual instruction in all methods of watercolour, including pen and pastels.

Class times

Mondays, 26 Apr - 21 Jun
9:00am - 12:00pm

Cost 8 weeks

\$260 (nm) / \$245 (m)

Code G201

Foundation Painting with Jon Ellis

Each week this structured course introduces students to the fundamentals necessary to becoming confident about tackling their own painting. It is the ideal foundation for anyone wishing to later join Jon's full day class, "Develop Expression in your Painting."

Class times

Mondays, 26 Apr - 21 Jun
12:30pm - 3:30pm

Cost 8 weeks

\$260 (nm) / \$245 (m)

Code G202

Portrait Drawing Sessions: Long Poses

This is an untutored group which is ideal for those with some experience, wishing to improve their portrait techniques. Sessions are based on one pose for a four-week period, for students who wish to work on paintings, sculptures or more detailed studies, directly from life. New poses commence first Monday of each month.

Class times

Mondays, Feb - Nov 6.30pm – 9:00pm

No classes on the 5th Monday of the month, when this occurs.

Cost \$15 per week

Bookings essential go to

<https://www.trybooking.com/BOFNL>

Painting with Russell Austin

If you have always wanted to create your own masterpiece this class will guide you through the many stages, from composition through to the final strokes of the brush. Creating in an environment with likeminded people can help the creative process with imagination and conquer the fear of Oil Paint!

Class times

Tuesdays, 27 Apr - 15 Jun
9.00am – 12:00pm

Cost 8 weeks

\$260 (nm) / \$245 (m)

Code G203

Central Coast Botanical Art Group

This group aims to foster members' learning in the genre of botanical art through sharing, experimentation and discussion. The group has no tutor; however, members freely offer constructive advice to each other. New members are very welcome.

Class times Tuesdays,

27 Apr - 15 Jun, 9:00am – 12:00pm
(NO CLASSES 11 MAY & 8 JUN)

Cost 6 weeks \$103 (nm) / \$96 (m)

Code G204

Flora and Fauna Basics with Molly Gill

This course will focus on the basic essentials for depicting plants and animals in art. We will explore a different technique or medium each week. Students may work in their medium of choice. All levels are welcome and tuition will be tailored to individual students.

Class times Tuesdays,

27 Apr - 15 Jun, 12:30pm - 3:30pm

Cost 8 weeks, \$260 (nm) / \$245 (m)

Code G205

Develop Expression in your Painting with Jon Ellis

Through the guidance of Jon Ellis, students are encouraged to develop their own work and style in a supportive group atmosphere. The longer format of this class allows students to immerse themselves in their work.

Class times Wednesdays

28 Apr - 16 Jun, 10:00am - 3:00pm

Cost 8 weeks, \$360 (nm) / \$345 (m)

Code G206

Watercolours Art Group

The Watercolours Art Group is a group of like-minded artists who meet on Thursday mornings in a friendly and supportive environment. The group has no tutor; however, members freely offer constructive advice to each other. New members are very welcome.

Class times Thursdays,

29 Apr - 24 Jun, 9:00am - 12:00pm ,

Cost 9 weeks, \$155 (nm) / \$145 (m)

Code G207

Approaches to Drawing—Intermediate with Cathryn McEwen

This class will build upon basic drawing skills incorporating a range of subject matter and approaches and introduce colour media. A different focus every week will encourage students to broaden their skills. This class is suitable for students who have previous drawing experience, who are looking to gain confidence.

Class times Thursdays,

29 April - 17 Jun, 9:00am-12:00pm

Cost 8 weeks \$260 (nm) / \$245 (m)

Code G208

Approaches to Drawing—Beginners with Cathryn McEwen

Those students new to drawing will be guided through a range of approaches "from perspective to expressive". The exploration of media and subjects (including portraiture) will provide a thorough introduction to this art form. Students with previous drawing experience can choose to revise their skills with the weekly focus, or be guided through personal projects to further develop visual expression with specific media.

Class times Thursdays,

29 April - 17 Jun, 12:30pm-3:30pm

Cost 8 weeks \$260 (nm) / \$245 (m)

Code G209

Adult Classes continued...

Pastels Art Group

A group of like-minded artists which meets on Friday mornings in a friendly and supportive environment. The group has no regular tutor; however, members freely offer constructive advice to each other. Those wishing to utilise other two-dimensional water-based media are also welcome to enrol.

Class times

Fridays, 30 Apr - 25 Jun
9:00am - 12:00pm

Cost 9 weeks

\$155 (nm) / \$145 (m)

Code G210

The Artist's Studio with Cathryn McEwen

Immerse yourself in a friendly environment where you'll be taken through a creative experience as you work on personal projects. Students will develop their own style under the expert guidance of respected artist and teacher, Cathryn McEwen.

Class times

Fridays, 30 Apr - 18 Jun
12:30pm - 3:30pm

Cost 8 weeks

\$260 (nm) / \$245 (m)

Code G211

Life Drawing Sessions

This class is ideal for those with some experience wishing to improve their technique and build a folio of drawings.

Class times Every Thursday, 6:30pm - 9:00pm February - November

Cost \$15 pay online

Bookings essential go to <https://www.trybooking.com/BOFNL>

Want to enjoy great discounts on your Art Classes?

Become a supporter of Gosford Regional Gallery for \$25

You will receive invitations to exhibition openings and discounts in the gallery shop. Book online and pay full price on your art class now and bring your receipt to the Gallery within 2 weeks to claim the difference off your membership.



Children's Classes @ Gosford Regional Gallery

Art Mechanics with Shelley McGavin

Years 4 - 6 Intermediate

Experience themed art activities, developed to extend student art skills and creative processes. Students will be guided with art fundamentals, using a variety of art materials and studio practices.

Class times

Mondays, 26 Apr -21 Jun 4:00pm - 5:30pm

Cost 8 weeks \$165 (nm) / \$155 (m)

Code G211

Emerging Art-itudes with Shelley McGavin

Years 1-3 Beginner

A fun introduction to a range of art materials, techniques and styles. Students will explore the creative process through a mixture of playful observations and experiments that target the imagination.

Class times

Tuesdays, 27 Apr - 15 Jun 4:00pm - 5:30pm

Cost 8 weeks \$165 (nm) / \$155 (m)

Code G212

Technical with Shelley McGavin

Years 7-9 Advanced.

For students who wish to develop their art techniques in drawing and painting. With a new theme each term, students will choose how they wish to develop a small body of work of two to three art pieces under the guidance of the tutor.

Class times Wednesdays, 28 Apr - 16 Jun 4:00pm - 5:30pm

Cost 8 weeks \$165 (nm) / \$155 (m) **Code** G213

Don't forget to use your

Creative Kids Voucher

The NSW Government is helping kids get creative with the Creative Kids program.

Parents, guardians and carers can apply for a ***voucher with a value of up to \$100*** per calendar year for each student aged 4.5 to 18 years old enrolled in school.

The voucher may be used with a registered activity provider for registration, participation and tuition costs for creative arts lessons and activities.





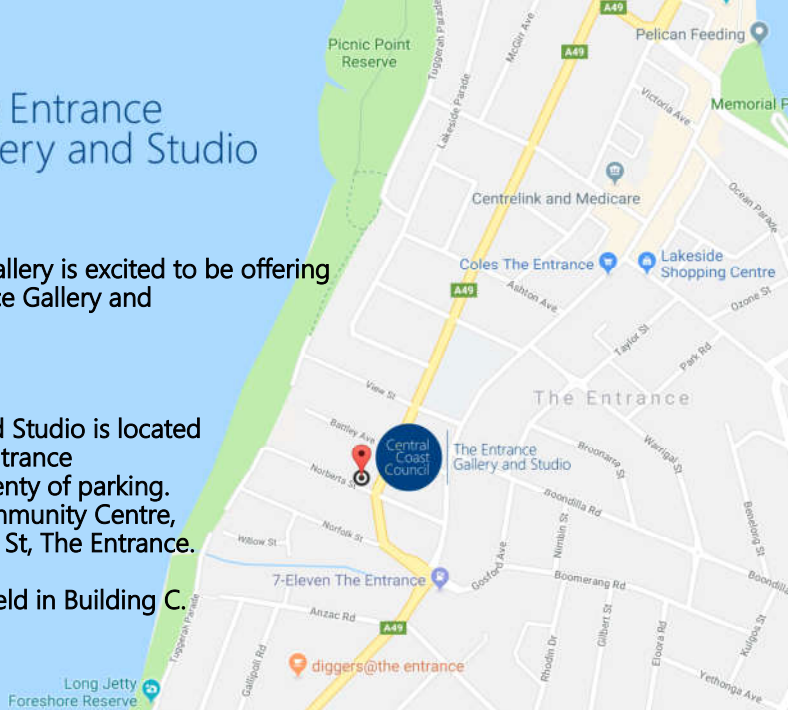
The Entrance Gallery and Studio

The Gosford Regional Gallery is excited to be offering art classes at the Entrance Gallery and Studio.

How to find us

The Entrance Gallery and Studio is located conveniently near the Entrance Town Centre and has plenty of parking. Part of the Entrance Community Centre, it is located on Norberta St, The Entrance.

The workshops will be held in Building C.



Adult Classes @ The Entrance Gallery and Studio

Developing your Drawing with Molly Gill

A comprehensive introduction to drawing with colour and graphite. While the main focus is developing drawing techniques we will also explore watercolour and other mediums as requested. This class is suitable for beginners and intermediate students who are wanting to improve their technique.

Class times Thursdays,

29 Apr - 17 Jun, 12:30pm - 3:30pm

Cost 8 weeks, \$260 (nm) / \$245 (m)

Code E203

Introduction to Drawing with Molly Gill

A comprehensive introduction to pencil drawing covering all the bases, including basic materials and optional tools/aids for drawing line tone/value, light and shadow, positive and negative space, composition, perspective, proportion and creating special effects and textures on the surface. Watch your drawing improve over the course..

Class times Fridays

30 Apr - 18 Jun, 9:00 am - 12:00pm

Cost 8 weeks, \$260 (nm) / \$245 (m)

Code E204

Children's Classes @ The Entrance Gallery and Studio

Art Starters with Natalie Fallon

Years 1–4 Beginner.

Suitable for young students who have a passion for art, this class will explore a range of mediums and styles. The classes will be focussed on learning techniques whilst allowing students to express their creativity.

Class times Thursdays, 29 Apr —17 Jun, 4:00pm - 5:30pm

Cost 8 weeks, \$165 (nm) / \$155 (m),

Code E205

Budding Artists with Natalie Fallon

Years 4–6 Intermediate.

Suitable for students who have a passion for art. This class will develop the students techniques and introduce them to a variety of artistic styles. Different themes throughout the term will give the students a strong grounding in the fundamentals of art. They will enjoy engaging with different materials and art making practices.

Class times Thursdays, 29 Apr —17 Jun, 6:00pm - 7:30pm

Cost 8 weeks, \$165 (nm) / \$155 (m),

Code E206

CONDITIONS OF ENROLMENT—All classes

Minimum class size is 5 students. Classes will be cancelled if there are insufficient students. If a class is cancelled, you will be notified by phone as early as possible prior to class commencement and a refund will be issued.

Management reserves the right to change tutors, change class times, venue and structure.

Unruly behaviour by children in classes will not be tolerated. Management reserves the right to refuse enrolment should circumstances arise.

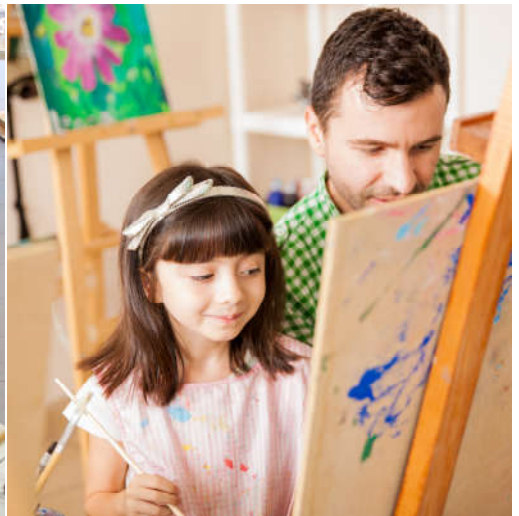
Refunds will not be given if a student discontinues a class that has begun, or if less than 48 hours cancellation notice is given.

A \$15 administration fee will be applied to changes in enrolment.

The Gosford Regional Gallery and Edogawa Commemorative Garden are a registered COVID Safe business. We have put in place the following guidelines to ensure that we can operate safely.



1. Stay home if you are unwell, or are required to Self isolate.
2. Maintain physical distancing of 1.5m. One student per table. Avoid gathering together.
3. Hand sanitiser is available, please use it.
4. Avoid sharing equipment and wipe down your own space.
5. Everyone who enters must be signed in electronically for contact tracing purposes.
6. Please be aware that there may be some disruption to classes if teachers are unwell. We will notify students and parents as quickly as possible.



For more information on classes or other programs at the Gallery please call us on **02 4304 7550**

Conditions of enrolment are on page 7.