

Don Craig Room

Technical Specifications

Central
Coast
Council



Updated March 2021

Contents

Topic	Page
General Information & Seating & Loading Dock	2
Stage Information, Rigging Ladders	3
Dressing Room Facilities	3
Drapery, Keyboard Instruments	4
Projection/AV	4
Lighting Facilities	5 - 6
Audio Facilities	7 - 9

Venue Details

Address – 5 Laycock St, Wyoming, NSW, 2250

Postal Address - P.O. Box 21, Gosford, NSW, 2250

Administration - (02) 4304 7419

Team Leader Operations –

Dean Harrington dean.harrington@centralcoast.nsw.gov.au

Mobile – 0409 321472

Direct Admin – (02) 4304 7141

Don Craig Room

Technical Specifications

GENERAL INFORMATION

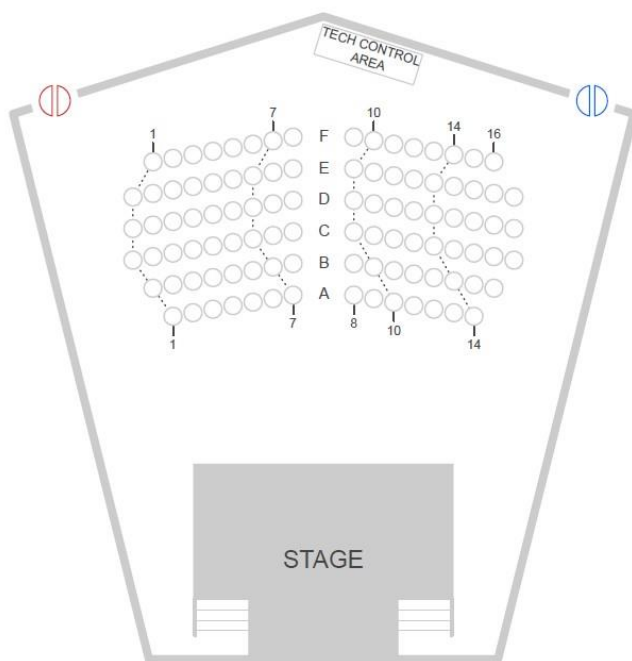
The Don Craig Room is a flat floor (carpeted) multi-purpose room with adjustable height stage. It is available for small cabaret style shows, music, drama, comedy, meetings and conferences. It is also suitable as a rehearsal space and additional dressing/holding room for the main auditorium.

SEATING CAPACITIES

Theatre style seating – 100

Tables (Cabaret Style) – 60

Holding room – 120



ACCESSIBILITY

The Don Craig Room is accessible via the main entrance.

LOADING DOCK AREA

Equipment is brought into the Don Craig Room via the front or rear foyer entry to Laycock St Theatre. Vehicles are not permitted to park in this area during performances due to evacuation and fire services access. They must be moved at the latest 1 hour before a performance. Theatre staff can advise of the nearest available parking for large vehicles.

Don Craig Room

Technical Specifications



STAGE DIMENSIONS

The stage consists of 6 x 2.4m x 1.2m portable DQ Performer stage decks which can be configured as required. Deck heights available – 300mm, 600mm or 900mm. Stair treads available

Standard stage configuration – 4.8m wide x 3.6m deep (17.28sqm) 900mm height

Black velvet skirting

Height from Floor to Ceiling – 3600mm

Stage Floor: Black 17mm plywood with non-slip surface

STAGE LOADING - 750kg/m UDL per stage unit

STAGE MACHINERY

Upstage of standard stage position there is a single length of curtain track with a French action opening

There is curtain track surrounding 3 sides of the room with standard black masking 50% fullness

RIGGING EQUIPMENT

Various rigging equipment available from main auditorium stock including SWR droppers, attachment straps, couplers, shackles, boom arms, LX floor booms/stands etc

LADDERS

1 x 3.6m double sided fibreglass A frame ladder

1 x 2.4m double sided fibreglass A frame ladder

1 x 2.1m double sided fibreglass A frame ladder

1 x 1.8m double sided fibreglass A frame ladder

1 x 1.2m double sided fibreglass A frame ladder

DRESSING ROOM

There is a small space behind the stage allocated for dressing room space approx. 15sqm with tables, chairs and mirrors

Depending on main auditorium usage, the backstage dressing rooms may be available. (See Laycock St Theatre Technical Specifications for details)

INTERNET ACCESS

A Guest WI-FI network operates in the theatre.

TALKBACK

1 x Jands Ezicom 4 ch Master Station

Jands beltpacks

Jands headsets to suit

Don Craig Room

Technical Specifications



DRAPERY

Back cloth – Fixed rear of standard stage position or French action track upstage

1 x Red 50% fullness (fixed only)

1 x Black 50% fullness

Wall masking –

Black 50% fullness wool drapes surrounding 3 walls except rear wall behind audience.

KEYBOARD INSTRUMENTS

1 x Yamaha P120 Electric Piano

ORCHESTRAL FURNITURE (subject to availability with main auditorium)

Black armless chairs

20 Music stands with sconces.

PROJECTION/AV

Screens

1 x Av Stumpfl Monoblox64 - 14'x7'10" 16:9 Front/Rear Projection Screen (image size 427x240cm with 10cm border)

1 x Av Stumpfl Monoblox32 - 12'x6'9" 16:9 Front/Rear Projection Screen (image size 366x206cm with 10cm border)

Playback

1 x Roland V-1SDI 3G-SDI Video Switcher

1 x Denon DN-500BD Blu Ray Player

1 x Apple Macbook Pro 15" 2019 – 2.3Ghz i9/16GB 2400MHz DDR4/Radeon Pro 560X 4GB/Intel UHD Graphics 630 1536MB/512GB SSD

1 x Apple Macbook Pro 16" 2020 – 2.3Ghz/Radeon Pro5500M/32GB/1TB SSD

Projectors

1 x Panasonic PT-VZ575NA Projector, WXUGA, 4,500 ANSI lumens

1 x Epson EBX31 Projector, XGA, 3,300 ANSI lumens

Additional Hire Charges apply for all projectors



Don Craig Room

Technical Specifications

Central
Coast
Council

LIGHTING FACILITIES

CONTROL

1 x ETC ION 1K Lighting Console with 1 x Fader Wing 2x20

1 x LSC Mantra Lite

DIMMERS

1 x Jands HUB-XCD 24 Channel Contactor/Dimmer Power Control System

POWER OUTLETS & DISTRIBUTION

2 x 40amp 3 phase outlets (1 x control position/1 x stage right)

1 x Jands PDS12 3 phase Power Distribution System

DMX

Various DMX lines from control position, truss and lx positions to dimmers

1 x Jands DD8 Opto-Isolated DMX Splitter

HOUSE LIGHTING

Dimmable 2700k Halogen downlights or Fluorescent Non-Dimmable Cool White

FIXED LIGHTING POSITIONS

Truss FOH

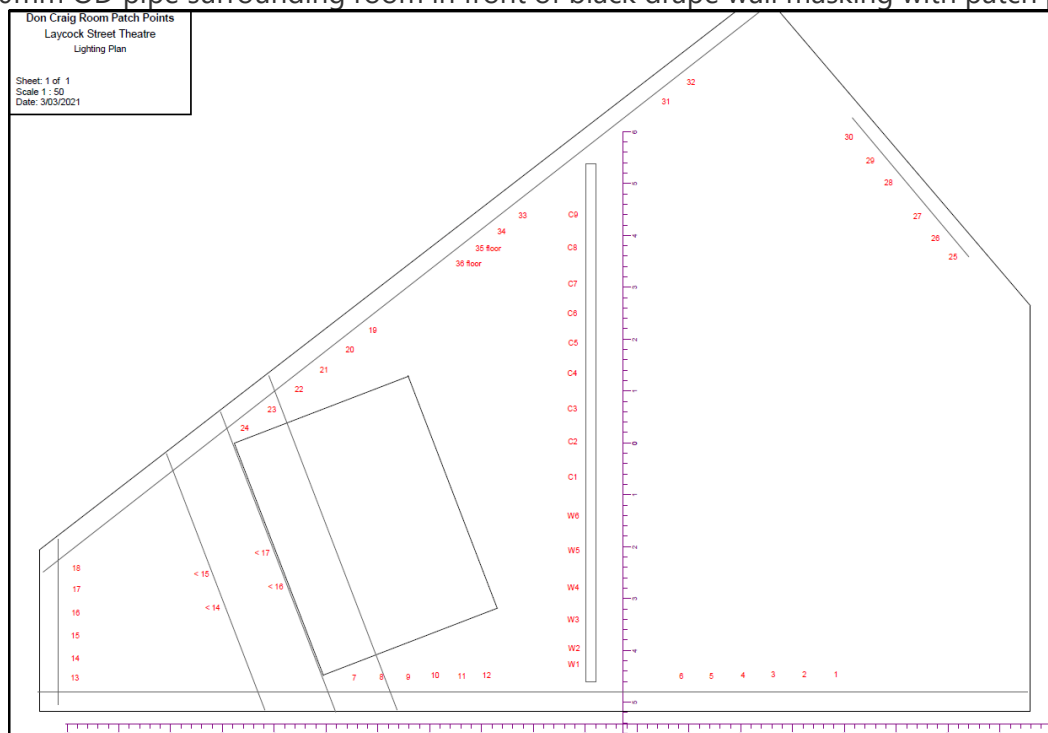
Length 10 m

Patch outlets 15 x 10amp

¾ Upstage 50mm Pipe

Length 6m

There is 50mm OD pipe surrounding room in front of black drape wall masking with patch points



Don Craig Room

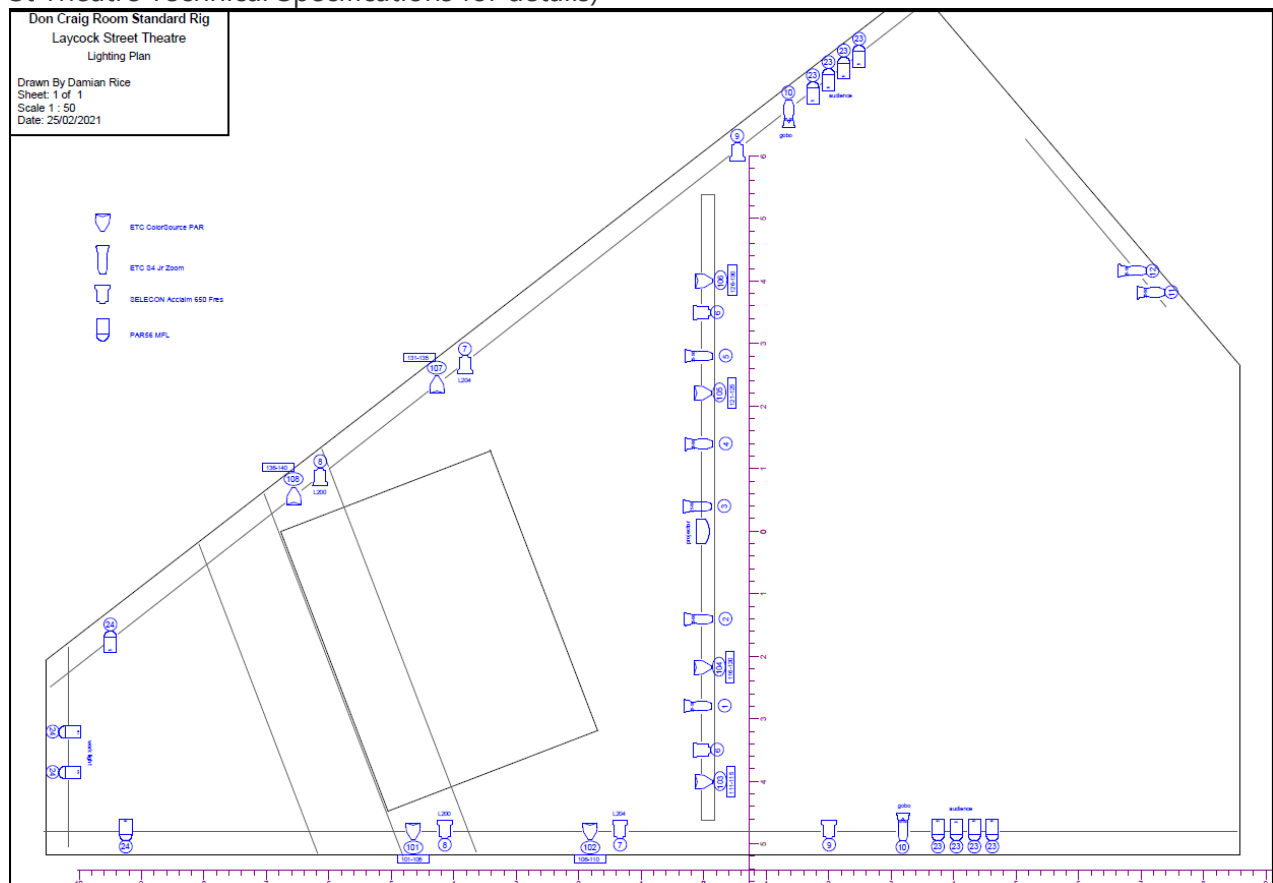
Technical Specifications

Central
Coast
Council

LAMP LIST

Type	Qty	Wattage
PROFILES		
ETC Source Four Jr Zoom 25/50	x 9	575w
FRESNELS/PC		
Selecon Acclaim 650	x 8	650w
LED		
ETC Colour Source Par	x 8	110w
OTHER		
Par 56 MFL	x 12	500w

Additional fixtures can be sourced from main auditorium stock depending on availability (see Laycock St Theatre Technical Specifications for details)



SMOKE/HAZE (Additional hire charge applies for all Smoke & Haze machines)

Jem ZR33 Hi Mass DMX Fog Machine

2 x Look Solutions Unique 2.1 Hazers

(Excessive use of fluid may incur additional charges)

Don Craig Room

Technical Specifications



AUDIO FACILITIES

FOH LOUDSPEAKERS

2 x L'Acoustics 112P Loudspeakers

2 x db Technologies SUB 18H Active Subwoofers

Additional Loudspeakers (subject to availability with main auditorium)

4 x d&b audiotechnik M6 Monitor Loudspeakers (4 sends available with D6 Amplifiers)

8 x db Technologies DVX DM12 self powered loudspeakers

1 x db Technologies SUB 15H Active Subwoofer (Drum Fill)

4 x Dynacord AXM 12A Coaxial Powered Monitor Speakers

2 x QSC CQ8 Powered Speakers

4 x JBL EON612 Powered Speakers (Flown Sidefill D/S & U/S)

2 x JBL EONG215 Powered Speakers

4 x JBL EONG2 10 Powered Speakers

8 x Behringer Powerplay P1 Personal In-Ear Monitor Amplifier

PROCESSING

1 x Yamaha Rio3224-D Stage Rack

MIXING CONSOLES

Yamaha CL1 Digital Mixing Console

Yamaha MX12/6

QSC Touchmix 16

Allen & Heath GL2400 24ch Console

iPad Pro with Yamaha Stagemix remote control/QSC Touchmix Remote

(There is a fully redundant primary & secondary Dante Cat6A audio data network installed with outlets on stage and control position for connection of CL consoles and RIO I/O racks)

PLAYBACK/RECORDING

1 x Apple Macbook Pro 13" 2.9GHz dual-core Intel Core i7 500GB HD running QLab and Nuendo Live

1 x Apple Macbook Pro 13" – 2.9GHz i5/8GB/512GB SSD running QLab

1 x Denon DN-500C CD Player with iPod dock

MICROPHONES (subject to availability with main auditorium)

Shure SM-58 x 6

Shure SM-57 x 6

Shure Beta 58 x 4

Shure SM-98A (3 x A98D Drum Mount) x 4

Shure KSM27 x 2

Don Craig Room

Technical Specifications



MICROPHONES cont. (subject to availability with main auditorium)

Shure 55SH ("Elvis Mic")	x 1
Shure Microflex MX418/C Lectern Microphone	x 1
Shure Microflex 202B/C Overhead Microphone	x 4
Shure Beta 52	x 1
Rode M5	x 4
Rode NT5	x 2
Audio Technica ATM350 clip on	x 2
Audio Technica ATM35cW (Wireless Version)	x 5
Audio Technica AT-33	x 4
DPA d:vote 4099 (piano, string ,universal mounts)	x 4
Audio Technica 4073 Shotgun	x 2
Audio Technica 877 Shotgun	x 2
Crown PCC	x 6

DI (subject to availability with main auditorium)

Radial J48	x 2
Radial Pro D2 Stereo DI	x 2
dbx DI1	x 2
dbx DB12 Active DI	x 4
dbx DB10 Passive DI	x 2
Whirlwind PC DI	x 1
Radial ProAV2	x 1
LA Audio DI2	x 2

WIRELESS MICROPHONE EQUIPMENT

(Please Note: Additional Hire Charge Applies)

- 6 x Shure QLXD4 Receivers (K52 Band)
- 6 x Shure QLXD1 Bodypack Transmitters
- 2 x Shure QLXD2 Handheld Transmitters

WIRELESS MICROPHONE CAPSULE SELECTION (subject to availability with main auditorium)

- 12 x Shure SM58
- 5 x Shure Beta 58A
- 2 x Shure Beta 87
- 2 x DPA 2028 B-SL12028 Super cardioid Vocal
- 15 x DPA d:fine66 Dual Ear Omni Headsets
- 1 x DPA d:fine 6066 Dual Ear Omni Headset
- 16 x Shure WL-93T Omni Lavalier
- 1 x Shure WL51B Cardioid Lavalier

Don Craig Room

Technical Specifications

Central
Coast
Council

OTHER

XLR Mic Cables

Large assortment of adapters, looms & patch cables

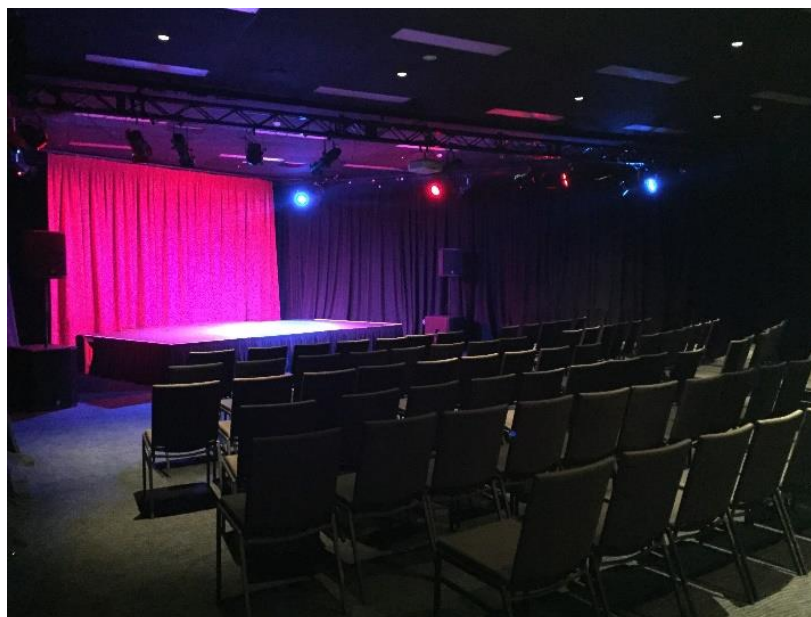
Mic Stands (Booms, Short Booms & Straight)

Speaker Stands

8 and 12 way drop boxes

ANALOG PATCHING

24 mic lines/ 4 returns from stage to control position.



Don Craig Room

Technical Specifications

Central
Coast
Council



Don Craig Room

Technical Specifications

Central
Coast
Council



Don Craig Room

Technical Specifications

Central
Coast
Council

