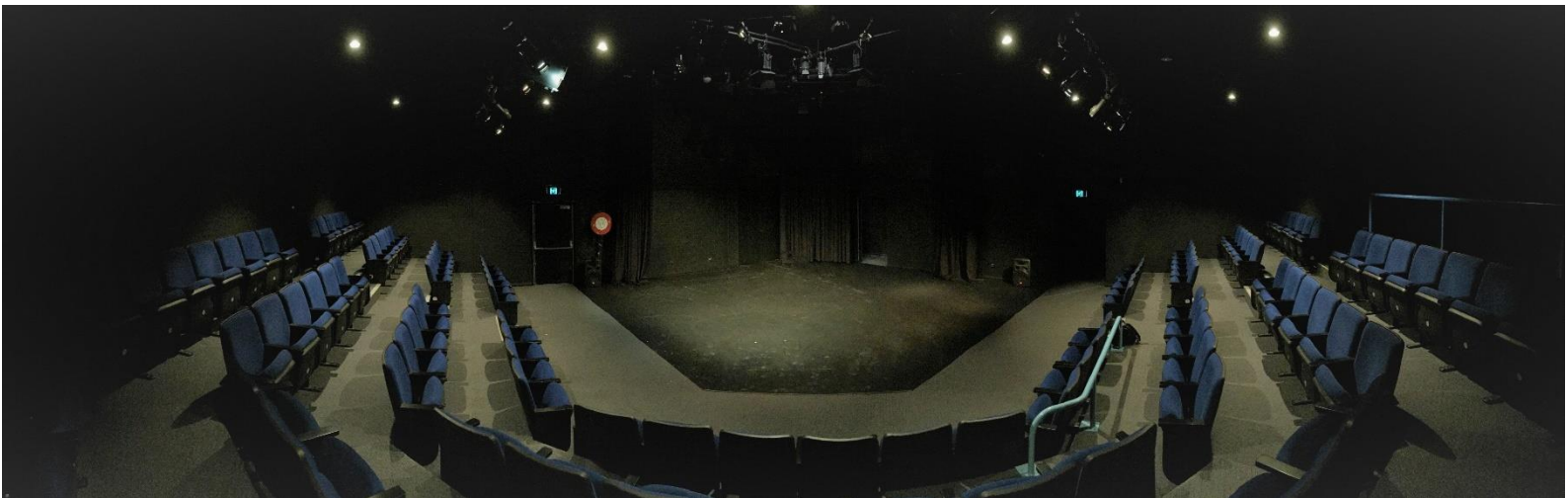


PENINSULA THEATRE

Central
Coast
Council

Technical Specifications



Updated March 2021

Contents

Topic	Page
Seating	2
Loading Dock, Stage Dimensions, Loading & Machinery	3
Stage plan	4
Rigging, Ladders & EWP Stage Management & Drapery	5
Dressing Rooms	5
Projection/AV	6
Lighting Facilities and Standard rig plan	7-9
Audio Facilities	10

Venue Details

Address – John Hoare Close, Cnr Macmasters Road & Ocean Beach Road, Woy Woy, NSW, 2256
Postal Address – P.O. Box 21, Gosford, NSW, 2250
Administration – (02) 4304 7419

Team Leader Operations –

Dean Harrington dean.harrington@centralcoast.nsw.gov.au
Mobile – 0409 321472
Direct Admin – (02) 4304 7141

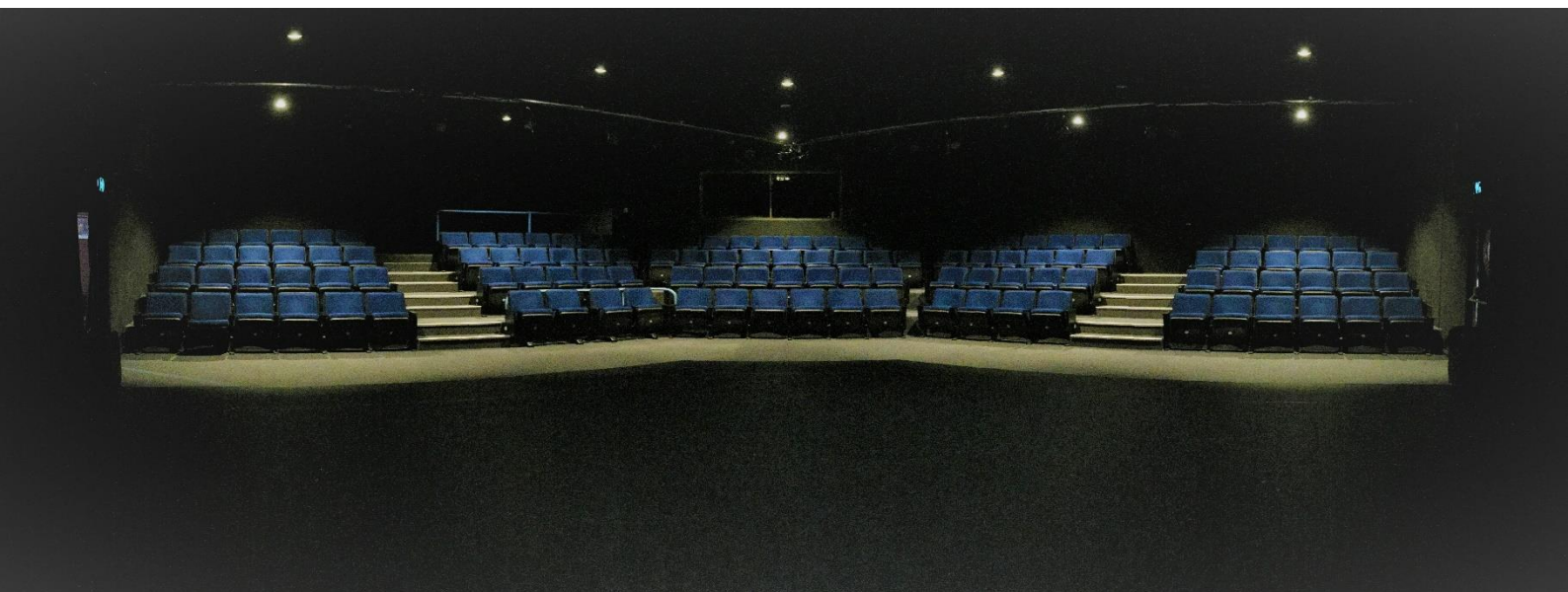
GENERAL INFORMATION

The Peninsula Theatre is a black box style theatre. The stage is situated on a diagonal in a corner with walls on the two upstage sides of the box. These walls are covered with black wool drapes. See plans and pictures available from Team Leader Operations.

PENINSULA THEATRE

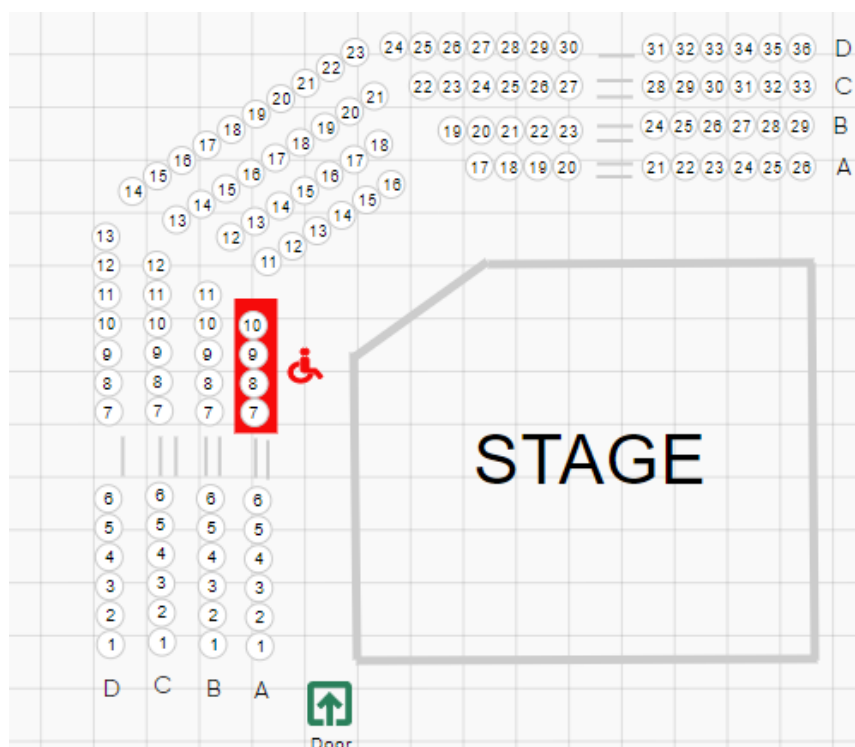
Central
Coast
Council

Technical Specifications



SEATING CAPACITY

Seating capacity is 124 raked



ACCESSIBILITY

The venue is accessible via the main entrance.

Technical Specifications

LOADING DOCK AREA

Equipment is brought into the Peninsula Theatre via the rear loading dock. Vehicles are not permitted to park in this area during performances due to evacuation and fire services access. They must be moved at the latest 1 hour before a performance. Theatre staff can advise of the nearest available parking for large vehicles.



STAGE DIMENSIONS (detailed drawing available on request)

7m square

Diagonal OP corner to P corner 9900mm

D/S centre to U/S corner 9100mm

Floor to LX Grid 5500mm

Stage Floor: 18mm structural plywood on 70 x 35 H3 MGP Battens @ 300mm centres.
6mm Masonite surface painted low sheen black
Concrete slab sub layer

STAGE LOADING - 7.5kPa Uniformly Distributed Load/4.5kN Concentrated Load

STAGE MACHINERY

Upstage 2 JH tracks surrounding 2 upstage walls to allow either black masking or white cyclorama

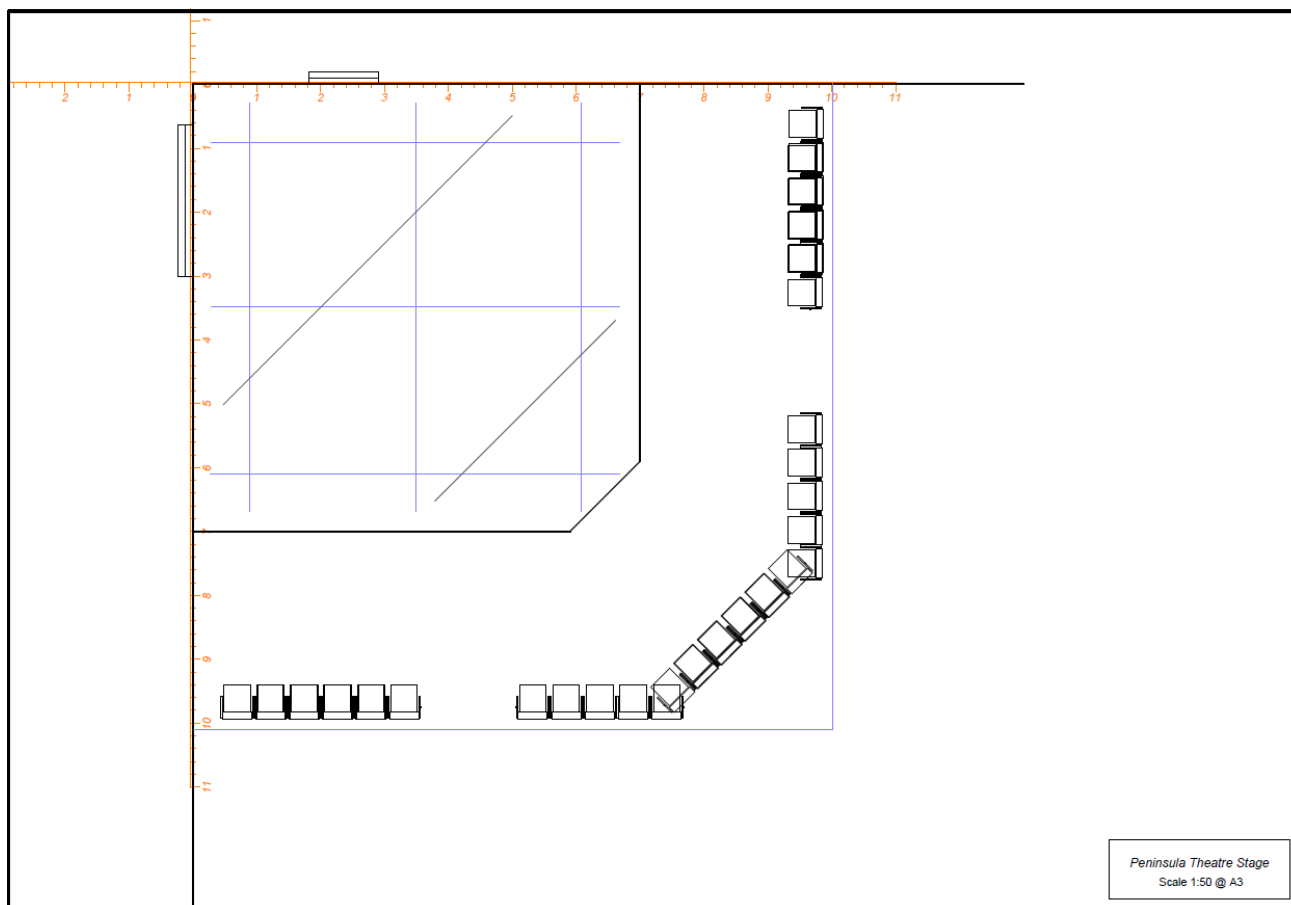
Midstage 1 JH French action track for midstage tabs masking upstage half of stage

PENINSULA THEATRE

Central
Coast
Council

Technical Specifications

STAGE PLAN (detailed drawing available on request)



RIGGING EQUIPMENT

Various rigging equipment available from Laycock St Theatre stock including SWR droppers, attachment straps, couplers, shackles, boom arms, LX floor booms/stands etc. Please liaise with Team Leader Operations for all rigging requirements

LADDERS & EWP

1 x Genie GRC-12 Runabout Aerial Work Platform
1 x 3m double sided fibreglass A frame ladder
1 x 2.1m double sided fibreglass A frame ladder

TALKBACK

1 x Jands Ezicom 4 ch Master Station
Jands beltpacks
Jands headsets to suit

STAGE DRAPERY

Type	Fullness	Colour/Material	Width	Height	Quantity	Standard Rig
Tabs	50%	Black Wool	3.5m	5.5m	4	upstage on track
Tabs	50%	Black Velvet	4m	5.5m	2	midstage on track
Cyclorama	Flat	White Filled Cloth	14m	5.5m	1	upstage on track

DRESSING ROOM

1 x large dressing room with curtain partition dividing into 2 spaces.
2 toilet and shower ensuites
2 x lit make up mirrors and benches

Note – *This venue does not have in house laundry facilities*

Total floor space 5m x 7m (35 person capacity)

INTERNET ACCESS

There is currently no internet access or WiFi available at this venue.

STAGE MONITOR SYSTEM

CCTV from Bio Box
3 monitors. Backstage, Dressing Room & Foyer
Show Relay to Dressing room & Foyer
Paging to Dressing Room from Bio Box

Technical Specifications

PROJECTION/AV

Peninsula Theatre does not maintain any AV equipment in house however equipment can be sourced from Laycock Street Theatre if available

Screens (suitable for venue)

1 x Av Stumpfl Monoblox64 - 14'x7'10" 16:9 Front/Rear Projection Screen (image size 427x240cm with 10cm border)

1 x Av Stumpfl Monoblox32 - 12'x6'9" 16:9 Front/Rear Projection Screen (image size 366x206cm with 10cm border)

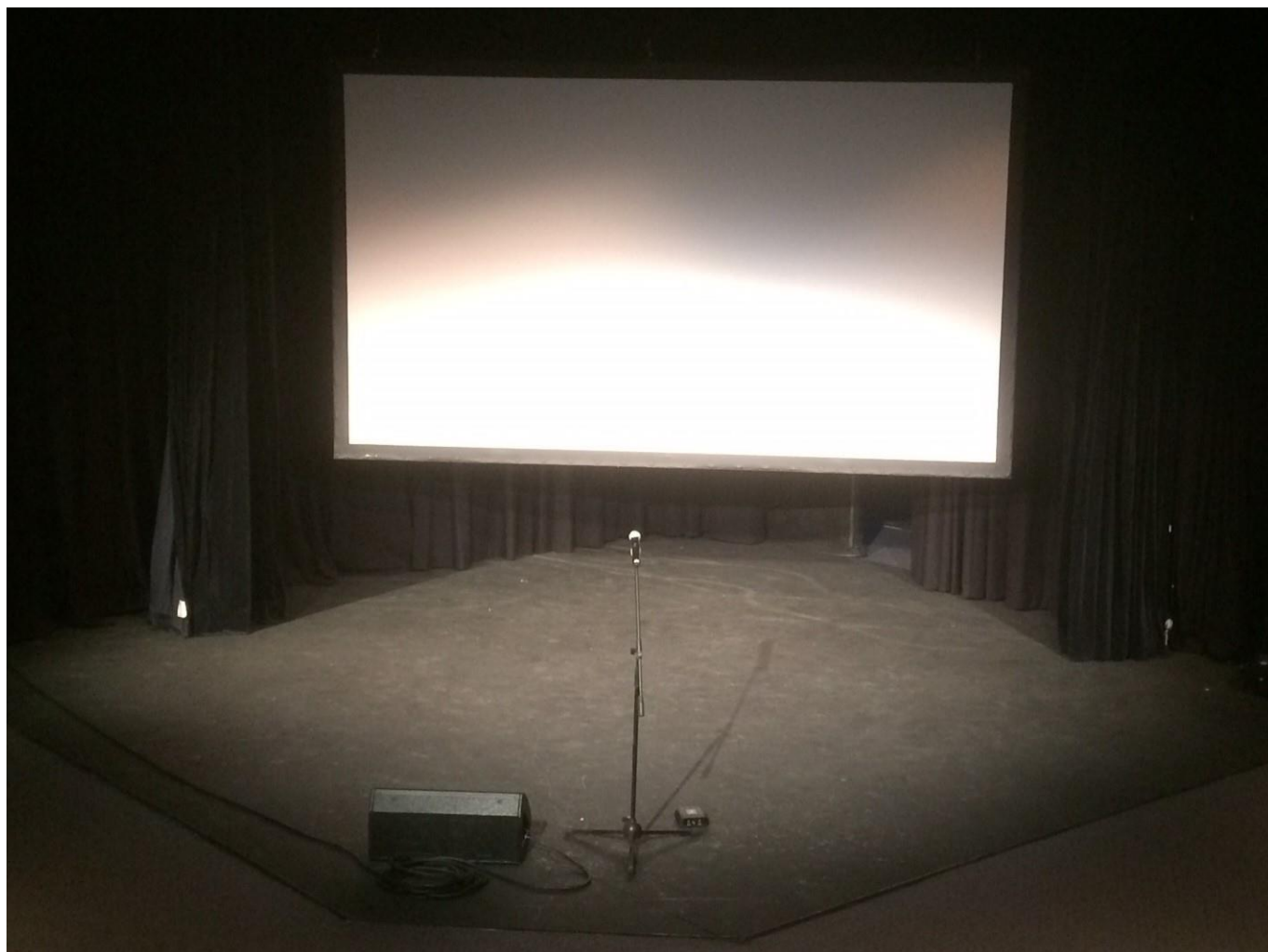
Projectors (suitable for venue)

1 x Panasonic PT-VZ575NA Projector, WXUGA, 4,500 ANSI lumens

1 x Epson EBX31 Projector, XGA, 3,300 ANSI lumens

Additional Hire Charges apply for all projectors

Below - Stage shown with Monoblox 32 screen and mid stage tabs in place



Technical Specifications

LIGHTING FACILITIES

CONTROL

1 x ETC Element 2 1K Lighting Console

DIMMERS

3 x Jands FP12-WM Dimmer racks (Total 36 x 2.4Kw) located in backstage corridor

POWER OUTLETS

1 x 32amp 3 phase outlet located with dimmer racks

DMX

DMX line from bio box to dimmers

1 x Jands DD8 Opto-Isolated DMX Splitter with dimmers for splits

HOUSE LIGHTING

Dimmable ETC Arc System LED downlights controllable from Bio Box and near auditorium entry

FIXED LIGHTING POSITIONS

Square shaped fixed lighting grid above stage with circuit tube

Suspended circuit tube and pipe for FOH position above 1st row of seating

See pictures and plans available

LAMP LIST

<u>Type</u>	<u>Qty</u>	<u>Wattage</u>
-------------	------------	----------------

PROFILES

ETC Source Four Jnr Zoom 25/50	x 8	575w
SELECON Acclaim ZoomSpot 18-34°-240v	x 5	650w
SELECON Pacific Zoom 12-28°	x 10	600w

FRESNELS/PC

Selecon Acclaim 650	x 12	650w
CCT Starlette	x 4	1000w
SELECON Acclaim 1200	x 4	1200w

LED

ETC Colour Source Par	x 6	110w
-----------------------	-----	------

OTHER

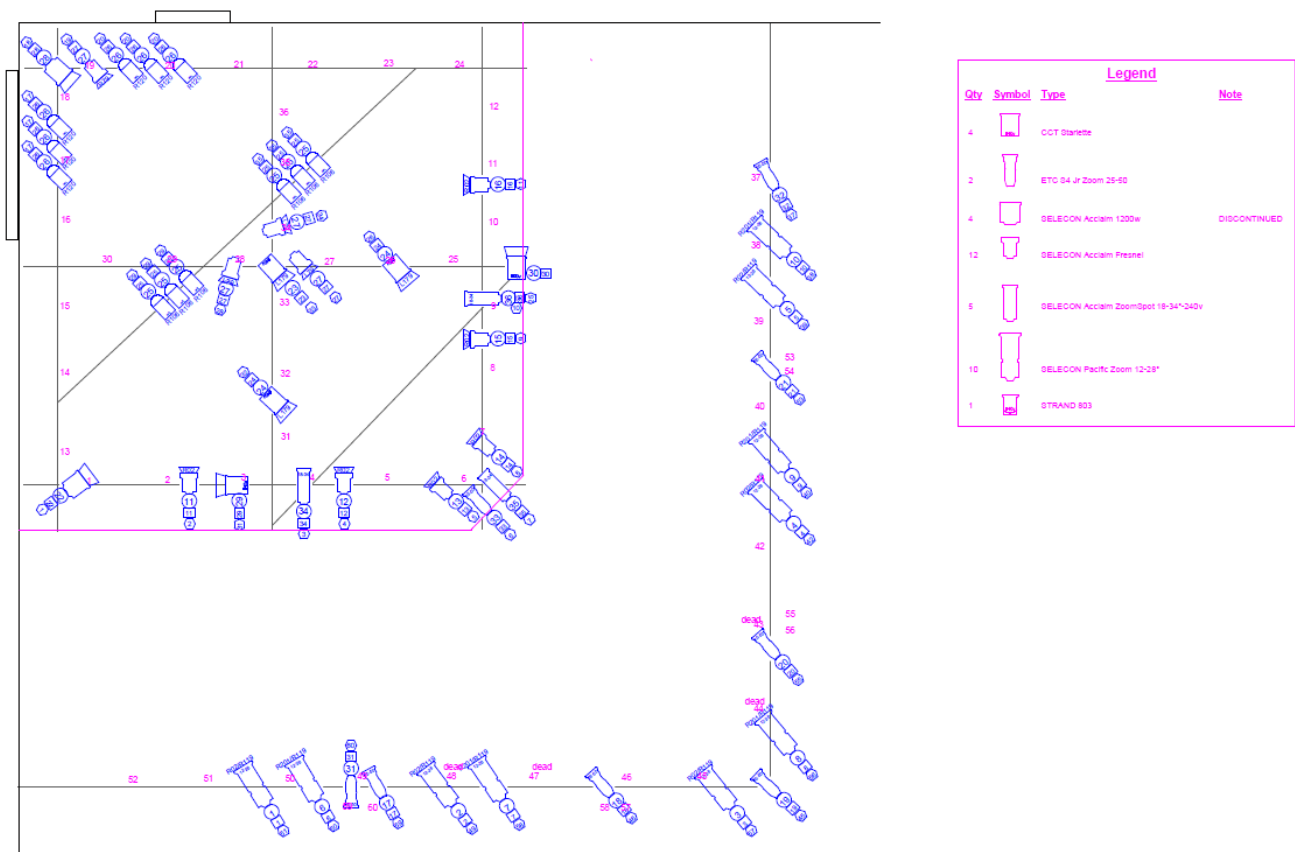
Par 56 MFL	x 12	500w
------------	------	------

PENINSULA THEATRE

Technical Specifications



STANDARD LX PLAN – (detailed drawing available on request)



FOH Lighting Bar



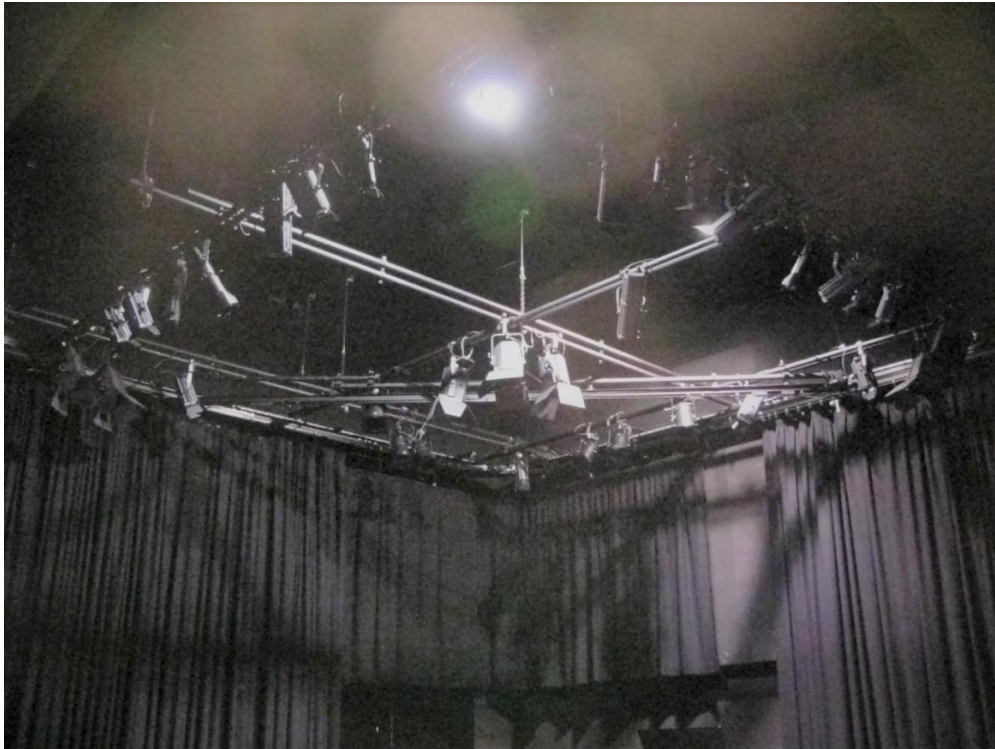
PENINSULA THEATRE

Central
Coast
Council

Technical Specifications



Above stage LX grid



Above stage LX grid with mid stage tab track

Technical Specifications

AUDIO FACILITIES

FOH LOUDSPEAKERS

2 x JBL PRX812 Loudspeakers
2 x JBL EONSUB Active Subwoofers

Additional Loudspeakers

2 x JBL EONG2 10 Powered Speakers

PROCESSING

2 x dbx 231 Dual 31 band Graphic EQ
1 x ART 455 Dual 31 band Graphic EQ
1 x Lexicon MX200 Effects Processor

MIXING CONSOLES

1 x Allen & Heath GL2200 24ch, 6 aux, 4 groups

PLAYBACK/RECORDING

1 x Marantz PMD-350 CD/Cassette Player
1 x Tascam MD350 MD Recorder/Player

MICROPHONES & DI

3 x Shure SM-58
2 x Shure SM-57
2 x Audio Technica AT-33
2 x SCV DI2

WIRELESS MICROPHONE EQUIPMENT

(Please Note: Additional Hire Charge Applies)

Peninsula Theatre does not maintain wireless microphone equipment in house however equipment can be sourced from Laycock Street Theatre if available

OTHER

XLR Mic Cables
Large assortment of adapters, looms & patch cables
Mic Stands (Booms, Short Booms & Straight)

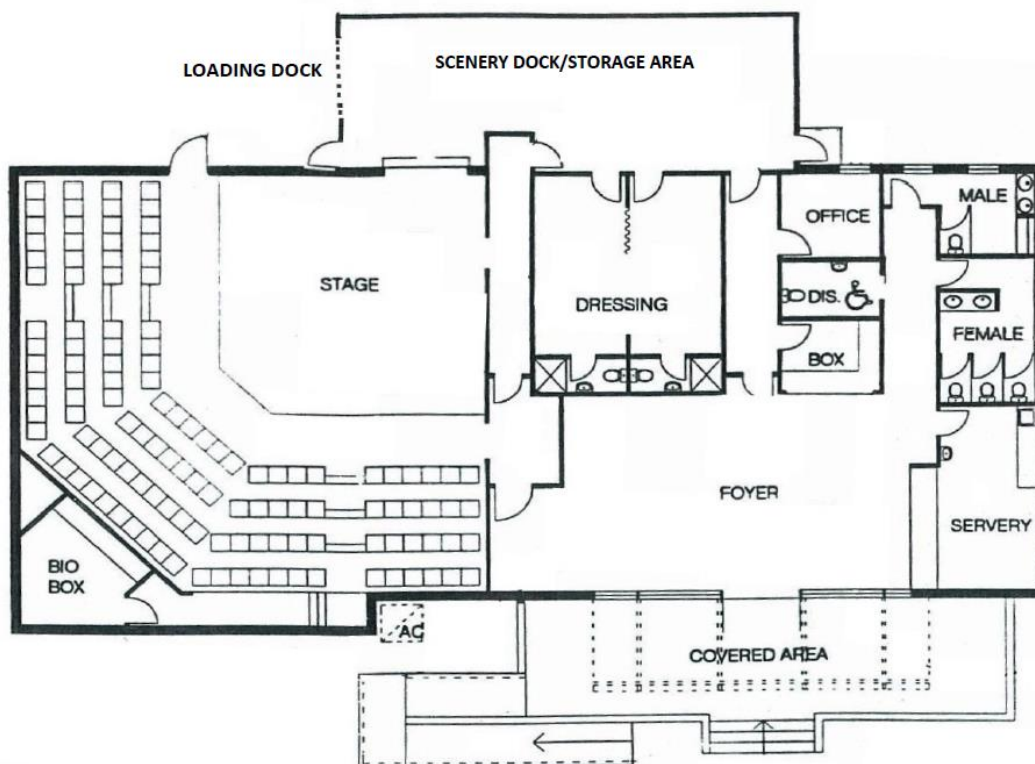
ANALOG PATCHING

16/4 channel multicore from stage to bio box

PENINSULA THEATRE

Central
Coast
Council

Technical Specifications



PENINSULA THEATRE

Technical Specifications

Central
Coast
Council

Loading/Scenery Dock storage area



PENINSULA THEATRE

Central
Coast
Council

Technical Specifications

Dressing Room

