



GOSFORD REGIONAL GALLERY

NOVEMBER '18 - MAY '19



What's



EXHIBITIONS   EVENTS   CAFE   GARDEN



FOR ART  
LOVERS  
GUIDED TOURS



FOR FRIENDSHIPS  
CAFE & GARDEN



&  
FLOOR TALKS

## FOREWORD

Welcome to the Summer/Autumn edition of the Gosford Regional Gallery and Edogawa Commemorative Garden What's On booklet. This season there are many not-to-be-missed exhibitions.

*Express Yourself*, drawn from the National Portrait Gallery collection, celebrates portraits of significant Australians who have both excelled in their fields and contribute to social change and enrich Australian culture.

The exhibition *Dying To See* features the last body of work created by well-known local artist Graeme Balchin. Sadly, Graeme lost his battle with illness before this exhibition took place. This final series explores his fears and longings as he faced his own mortality.

We are excited to be moving ahead with the planning of a new Tea House in the Gardens. This building has been donated by the Urasenke Foundation based in Kyoto. The traditional design and craftsmanship will be a celebration of Japanese culture. To mark the proposed opening of the Tea House, we are hosting the major international exhibition *Anime Architecture*.

Tim Braham | Team Leader, Gosford Regional Gallery



## FOR FAMILIES ART CLASSES



# inside

Gallery + Gardens	4 - 5
Weddings and Cafe	20
Membership	21
Art Classes + Education	22
Community Gallery	23
Your Visit	24

## Exhibition Program

Lotus Flowers: Geoff Harvey	8
Dying to See: Graeme Balchin	9
Express Yourself: National Portrait Gallery Exhibition	10 - 11
About Face: Gosford Junior Portrait Prize	12
Glimpse: Gabrielle Jones	13
Coast - Zone of Uncertainty: Patsy Payne and John Pratt	14
Significant: Central Coast Potters Society Collection	15
A Central Vision 2019	16
Sensation of Place: Jon Ellis	17
Anime Architecture	18 - 19

COVER: Background illustration for *Ghost in the Shell* (1995), cut 311, (detail) watercolour on paper, 280 × 380mm, Illustrator: Hiromasa Ogura, Copyright: © 1995 Shirow Masamune / KODANSHA · BANDAI VISUAL · MANGA ENTERTAINMENT Ltd. LEFT: John Pratt, *Edge* (detail), collage  
RIGHT: *Lara Umback*, Bella Umback, About Face second prize



# gallery

The Gosford Regional Gallery has three main exhibition spaces with an ever changing program of temporary exhibitions. The adjacent art centre is available for hire and supports the practice of local artists with art classes, meeting spaces and the Community Gallery.

Take home a memento from the Gallery shop. Selling high quality craft and designer products handmade by local and regional artists. Offering luxurious items including homewares, ceramics, glassware, textiles, stationery, books and jewellery.





# garden

INTERACT AND  
EXPLORE

Extending over 4,000m<sup>2</sup>, the Edogawa Commemorative Garden is based on a traditional 'shuyu' (strolling style) garden incorporating Japanese features. With meandering pathways, a roofed Japanese pavilion overlooking the Koi pond, raked dry stone garden and traditional Japanese teahouse, the garden offers a tranquil setting to relax and enjoy art and nature.

Why not book a ***guided tour of the Gallery and Garden*** for your group.

We cater for groups from 8 - 80 in size and all ages and knowledge levels.

To book, call the Gallery reception on 4304 7550.



Get more from your Regional Gallery and join our supporters program. See page 21.



24 NOV '18 - 13 JAN '19

Lotus Flowers

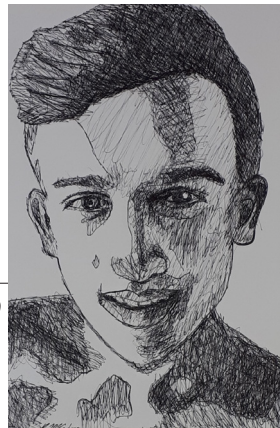
GEOFF HARVEY



1 DEC '18 - 3 FEB '19

Dying to See

GRAEME BALCHIN



15 DEC '18 - 6 JAN '19

About Face

GOSFORD JUNIOR

PORTRAIT PRIZE



1 DEC '18 - 3 FEB '19

Express Yourself

NATIONAL PORTRAIT

GALLERY EXHIBITION



19 JAN- 24 FEB '19

Glimpse

GABRIELLE

JONES



**9 FEB - 24 MAR '19**

**Coast - Zone  
of Uncertainty**

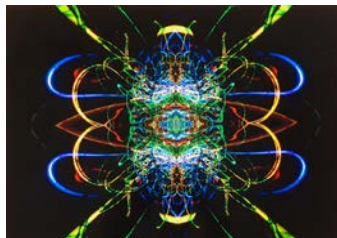
**PATSY PAYNE  
AND JOHN PRATT**



**9 FEB - 24 MAR '19**

**Significant**

**CENTRAL COAST  
POTTERS  
SOCIETY  
COLLECTION**



**28 FEB - 27 MAR '19**

**A Central Vision  
2019**



**30 MAR - 12 MAY '19**

**Sensation of Place**

**JON ELLIS**



**30 MAR - 19 MAY '19**

**Anime Architecture**



## Lotus Flowers Geoff Harvey

*24 November 2018 - 13 January 2019*

An exhibition inspired by the Buddhist symbolism of the lotus flower by well-known Sydney artist Geoff Harvey. Harvey has developed a fascination with the aesthetics and meaning of the lotus, continually revisiting the subject matter.

Harvey is a significant Australian artist whose career spans over forty years which includes highlights such as winning the Blake Prize, Sculpture By the Sea (peoples choice section), 2nd place in Gosford Art Prize 2016 and winner of the 2017 Muswellbrook Art Prize.

ABOVE: Geoff Harvey, *Deep Red*, acrylic on paper, 2018.

PAGE 6: Geoff Harvey, *Raining*, acrylic on paper, 2018.






## Dying to See Graeme Balchin

*1 December 2018 - 3 February 2019*

An exhibition of recent paintings and drawings by much loved Central Coast painter Graeme Balchin (1948 – 2018) exploring life and death, light and shadow, atmosphere and symbolism, nature and beauty, vulnerability and inner power.

There is a strong autobiographical theme to this final series of work, portraying his love of life and acceptance of mortality. Balchin named this exhibition ***Dying to See*** before he passed away in July 2018.



## Express Yourself National Portrait Gallery Exhibition

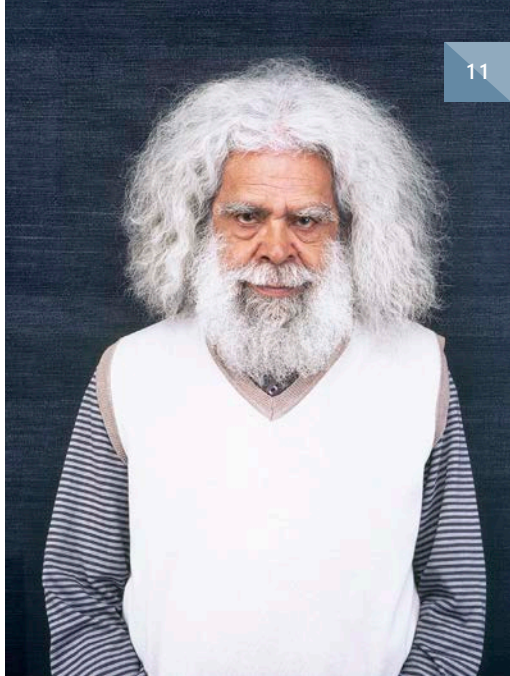
*1 December 2018 - 3 February 2019*

Drawn from the National Portrait Gallery's contemporary collection, ***Express Yourself*** celebrates portraits of Australians whose unique life experiences symbolise social and cultural themes.

Each subjects' strength of conviction and uncompromising individuality has lead them to excel in their chosen fields and contribute meaningful change to the social and cultural environment in Australia.

Portraits of Marcia Langton, Jack Charles, Jeff Fenech, Alex Wodak, Carol Ruff, Jim Conway and Gary Foley are among the more than thirty photographs, drawings and digital works on display in the exhibition.

*This exhibition is supported by the National Collecting Institutions Touring and Outreach Program, an Australian Government program aiming to improve access to the national collections for all Australians.*



ABOVE: *Nikki Toole Rosie Batty*, 2017, type C photograph  
Collection: National Portrait Gallery, Canberra  
Commissioned with funds provided by the Circle of Friends 2017

RIGHT: Rod McNicol, *Jack Charles*, 2011, inkjet print  
Collection: National Portrait Gallery, Canberra

PAGE 6: Graham McCarter, *Jeff Fenech & John Lewis*, 1986, gelatin silver photograph  
Collection: National Portrait Gallery, Canberra, purchased 2011

## ***EXPRESS YOURSELF***

### NATIONAL PORTRAIT GALLERY EXHIBITION





ABOVE: Jessica Honor, *Patrick Flower*, About Face third prize  
PAGE 6: Claudia McCartney, *Jack Eggleton*, About Face first prize

## About Face Gosford Junior Portrait Prize

*15 December 2018 - 6 January 2019*

***About Face***, the Gosford Junior Portrait Prize is an exciting opportunity for budding young artists from 5 to 18 years old to demonstrate their drawing talent and compete for a prize pool of \$1,000. Prizes are awarded to portrait drawings that are drawn from life, of people special to the young artist.

***About Face is generously supported by the Jocelyn Maughan Art Foundation.***

Entries close:

Wednesday 12 December 2018. Visit our website for further information.





*"My work addresses the speed, movement and image saturation of contemporary life - the "Blur" - always part seen and part gone..." - Gabrielle Jones*

ABOVE: Gabrielle Jones, *Dangerous Divas*, oil and acrylic on canvas, 2018.

PAGE 6: Gabrielle Jones, *Orpheus's Last Party*, oil and acrylic on canvas, 2018.

## Glimpse Gabrielle Jones

*19 January - 24 February 2019*

Gabrielle Jones is an abstractionist who uses colour and transparency to create vibrant oil paintings. Borrowing a traditional palette from the old masters, Jones produces works with energetic viscosity.

Jones lives in the Blue Mountains and has travelled through France and Italy during 2017/18, obtaining inspiration from the Rococo and Baroque periods whilst sketching her experiences.

This body of work is the result of these travels and artistic explorations.



ABOVE: Patsy Payne, *Wandering*, Relief print on Kozo 99 x 64cm

PAGE 7: John Pratt, *Swimmers*

## Coast - Zone of Uncertainty **Patsy Payne and John Pratt**

*9 February - 24 March 2019*

***Coast- Zone of Uncertainty*** is a series of works by contemporary printmakers Patsy Payne and John Pratt, that chart the diverse implications of the coastline.

From the topographies and landforms that define the physical margin between sea and land, to the role of the Coast as a zone of reflection, a site that in some way evokes our capacity to speculate and imagine beyond ourselves.



## Significant Central Coast Potters Society Collection

9 February - 24 March 2019

Celebrating the Central Coast Potters Society Ceramic Collection.

Curated by crafts and design historian Dr Grace Cochrane, **Significant** is a selection of important works from the Central Coast Potters Society Collection. Cochrane has selected from over 300 pieces, reflecting the journey of the Society over its 50 years. Founders, members, donors, award-winners and visiting tutors have contributed a truly momentous record and resource for now and the future.

ABOVE: Judith Barrett, *Fruit Bowl for the Birds*, stoneware, white glaze, gas fired, 1984.

PAGE 7: Valda Vaughan, *Organic Pumpkin*, found clay, pinch pot, clear glaze, circa 1960s, CCPS general collection.



Central Coast  
Potters Society  
[www.ccpotters.org](http://www.ccpotters.org)



## A Central Vision

*28 February - 27 March 2019*

Discover the up-and-coming talent of our region. This exhibition is the best public school student artwork (year 7 to year 12) from across the Central Coast.

**A Central Vision** is a partnership between the Department of Education and Gosford Regional Gallery that celebrates the creativity of local students and provides an opportunity for the public display of student work.

ABOVE: LP, *Swim*, *Girrakool ETU*

PAGE 7: Hayden Jury, *Long Exposure*, Kariong Mountains High School





## Sensation of Place **Jon Ellis**

*30 March - 12 May 2019*

A solo exhibition by award-winning landscape painter Jon Ellis. Inspired by the Central Coast environment, Ellis often paints plein air and considers the outdoors to be his real 'studio'. His paintings are known for their energetic lines, colour and impasto technique. Ellis studied at the St. Martin's College of Art, London, and has exhibited widely in Sydney and on the Central Coast.

ABOVE: Jon Ellis, *Turbulence*, acrylic on board, 2017.

PAGE 7: Jon Ellis, *Mangrove mudflat*, oil on board, 2018.



Anime Architecture

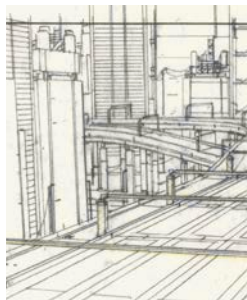
30 March to 19 May 2019



**PAGE 18:** Background illustration for *Ghost in the Shell* (1995), cut 341. watercolour on paper, 280 × 380mm  
Illustrator: Hiromasa Ogura

**ABOVE:** Background illustration *Ghost in the Shell* (1995), cut 509 (detail). watercolour on paper and acrylic on transparent film, 270 × 380mm  
Illustrator: Hiromasa Ogura

**RIGHT:** Layout for *Ghost in the Shell* (1995), cut 509 (detail) pencil on printed paper, 240 × 370mm  
Illustrator: Takashi Watabe



**PAGE 7:** Layout for *Ghost in the Shell* (1995), cut 311 pencil on printed paper, 240 × 370mm  
Illustrator unknown

All images copyright: © 1995 Shirow Masamune / KODANSHA · BANDAI VISUAL · MANGA ENTERTAINMENT Ltd.

**Anime Architecture** traces the architectural world-building process of Japan's most influential animated science fiction films. Curated by Stefan Riekes for Les Jardins des Pilotes, Berlin, this international touring exhibition casts a spotlight on the meticulous hand-drawn backdrops that brought to life the fictitious urban environments of iconic cyberpunk anime.

**Anime Architecture** reveals some of the intricate creative processes behind iconic Japanese animated films *Patlabor: the Movie*, *Osamu Tezuka's Metropolis*, *Ghost in the Shell*, and *Ghost in the Shell 2: Innocence*.

Among the location photographs, concept sketches and full colour anime cels, there are works by Hiromasa Ogura, Takashi Watabe, Haruhiko Higami, Mamoru Oshii and Atsushi Takeuchi, Japanese animators who worked during the peak of hand-drawn animation. ***This exhibition is presented in association with Les Jardins des Pilates.***

# weddings + cafe

20



The garden offers a beautiful outdoor venue for weddings and other functions. Weddings are normally held in the Koi Pavilion which is suitable for ceremonies ranging from small and intimate to 150 guests. Other celebrations include naming ceremonies and corporate functions.

***The Point Café Japanese Gardens*** is the perfect spot to relax after a visit. Located within the Gallery it provides a wonderful outlook onto the Edogawa Commemorative Garden.

*To book a wedding, call reception on 4304 7550.*

*To book at The Point Café, call reception on 4324 8099.*



# join us

## GALLERY MEMBERSHIP

Our **Membership** scheme is designed to give you more access and great discounts at the Gallery.

Become a supporter for only \$25 or \$40 for a family and receive:

- Invitations to all our exhibition openings
- Discounts in the shop and our art class program
- Special access to events

You'll be actively supporting the Gallery to develop stronger exhibitions and cultural events, with 100% of the money going back into programs at the Gallery.



## BECOME A VOLUNTEER

We have many positions available at the Gallery, from greeting visitors at our front desk, helping out in the gift shop, assisting with exhibitions, gallery guiding or assisting with educational programs.



# art classes

Our education programs are designed to support the primary and high school curriculum and encourage life-long learning.

We tailor programs to suit our exhibitions and the school's area of interest, including workshops focusing on art making and art literacy.

We also run several exhibitions each year focused on the work of local school students. For more information contact us on 4304 7550.

## AND EDUCATION

A constantly evolving program of art classes has been designed to engage and encourage students in an informal and friendly environment.

Divided into four eight-week terms, there are classes suitable for all ages and abilities. Book online: [centralcoast.nsw.gov.au/galleries](http://centralcoast.nsw.gov.au/galleries)



# community gallery

The Community Gallery is an exhibition space adjacent to Gosford Regional Gallery. It is designed to showcase regional and community based arts. Exhibitions range from one weekend to three weeks in duration, with hiring exhibitors displaying works from various artistic fields.

Applications can be found on the Gosford Regional Gallery website and are assessed twice a year.





Gosford  
Regional  
Gallery

# your visit

36 Webb St, East Gosford | [centralcoast.nsw.gov.au/galleries](http://centralcoast.nsw.gov.au/galleries)

## GOSFORD REGIONAL GALLERY

Tel: 4304 7550

Daily 10am - 4pm

## EDOGAWA COMMEMORATIVE GARDEN

Daily 9.30am - 4.30pm

## THE GALLERY SHOP

Daily 10am - 4:30pm

## THE POINT CAFE JAPANESE GARDENS

Tel: 4324 8099

Daily 9am - 3pm

## SUPPORTERS AND MEDIA PARTNER



Create NSW  
Arts, Screen & Culture



## ADMISSION

Admission to the Garden and most exhibitions is free.

## ACCESS AND FACILITIES

All exhibition spaces and the garden are wheelchair and stroller accessible. A courtesy wheelchair is available on request, simply ask at the front desk on arrival.

## PHOTOGRAPHY

Only personal hand held photography is permitted in the Garden and Gallery. Professional or other uses may incur a fee. Please phone the Gallery for more details.

ABOVE: Clodagh Blackburn, *Golden Nebulae*, May 2017, wheel thrown, Keane Ceramics Lumina Porcelain, ash, glaze, gold lustre, stoneware and lustre firings