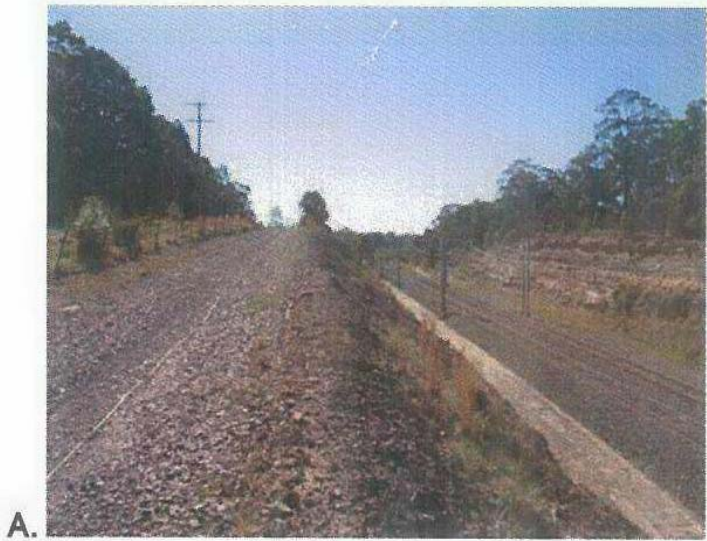
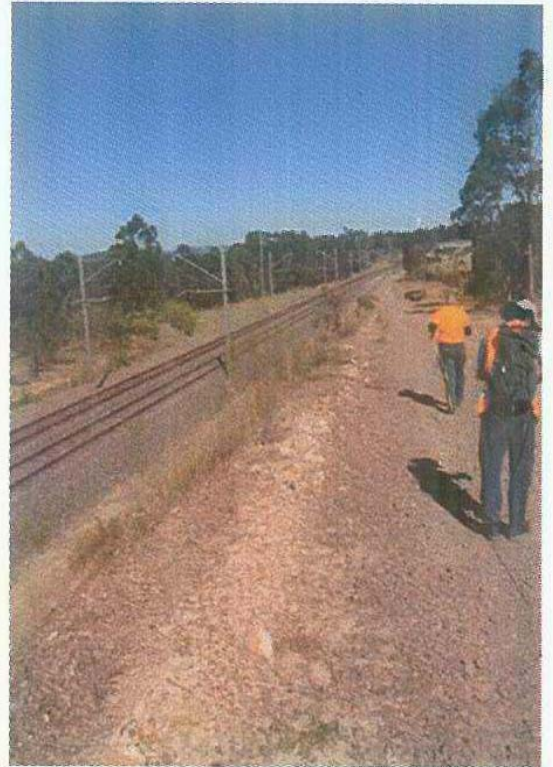


Enclosures for Warnervale Railway Station Report:

Enclosure 1: A Station location looking North; and
B Station location looking South



A.



B.

(A) Station location looking north and

(B) Station location looking south

Enclosure 2 – Aerial Photo of the site



- Daisy Conservation Reserve
- Study area
- Indicative pedestrian access
- Station footprint
- RailCorp plan
- RailCorp land in study area
- Property boundaries



Figure 2

0 100 200 Metres

Data on this map is copyright
and supplied by:
Land and Property Information NSW.

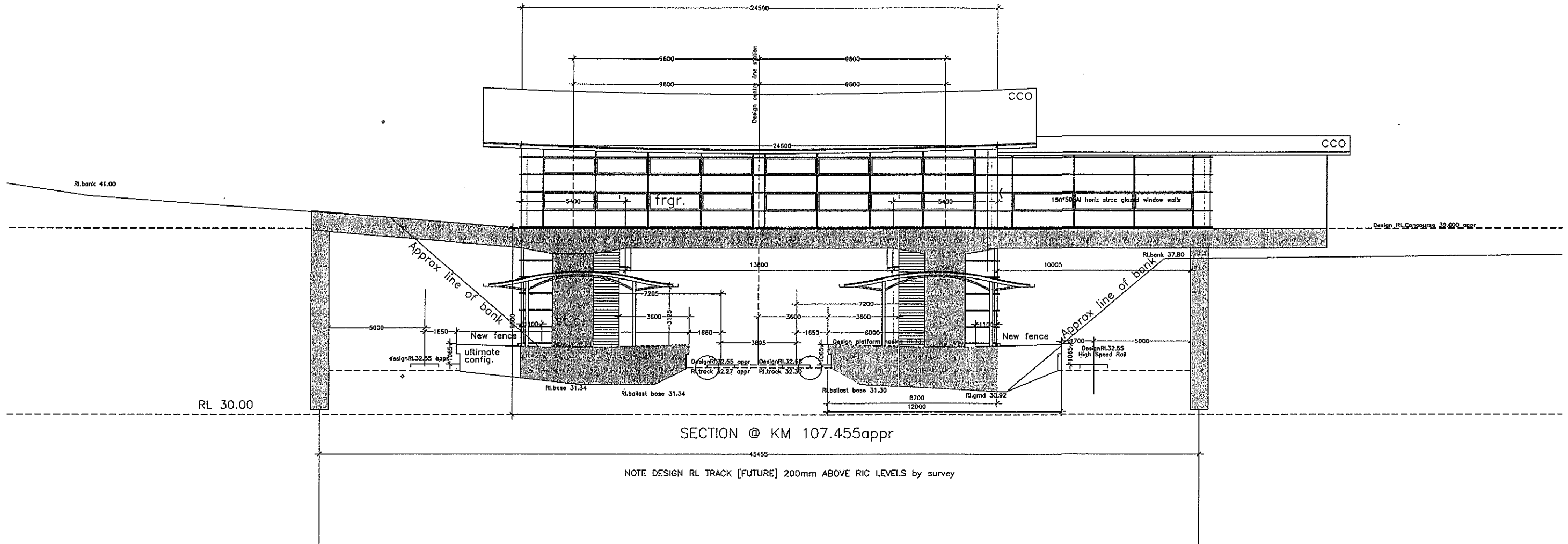
Prepared by: DB
Approved by: SD
Date: 26 June 2007
Status: Final





SCHEDULE OF FINISHES

- frgr. framed glass panels, reversible
- st.c. fine formed structural concrete
- mp. metal panels
- tcp terra cotta panels or glazed brick
- cco corrugated sheet steel colorbond
- hdz Hot zinc dipped structural steel section
- ssg 300mm half round gutters Stainless steel



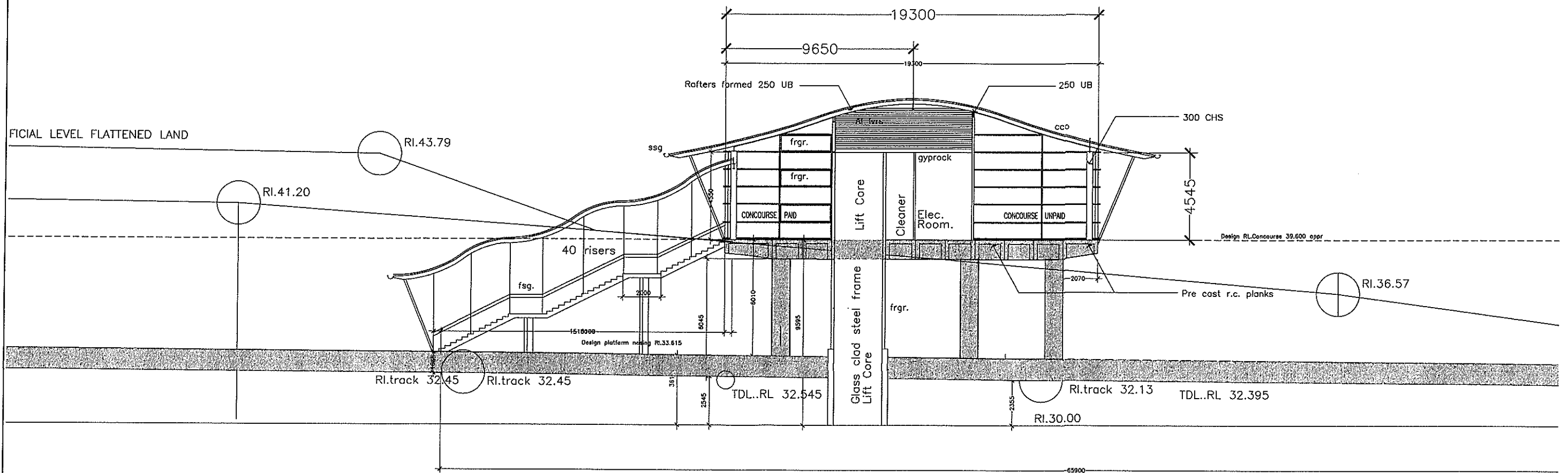
NOTE DESIGN RL TRACK [FUTURE] 200mm ABOVE RIC LEVELS by survey

CONTRACTORS MUST VERIFY ALL DIMENSIONS ON SITE BEFORE STARTING WORK.
© COPYRIGHT SIMPSON DAWBIN

REVISED	DESCRIPTION	DATE	NOTES:	QUANTITY SURVEYOR	ELECTRICAL ENGINEER	STRUCTURAL ENGINEER	MECHANICAL ENGINEER	PROJECT NORTH WARNERVALE STATION	PROJECT STAGE DEVELOPMENT APPROVAL SERIES	DRAWING SOUTH SECTIONAL ELEVATION	CLIENT RAILCORP	SIMPSON DAWBIN ARCHITECTS. 148 No14 HARABANG WAY BELROSE NSW 2085 TELEPHONE: +612 9486 3003 FAX +612 9486 3004 email simpsondawbin@ozemail.com.au	CONCEPT DES DEV DRWHN CHECK VERIFIED (By Limited) (By Limited) (By Limited) (By Limited) (By Double)	SCALE 1/100
			THIS DOCUMENT IS A WORK PRODUCT OF SIMPSON DAWBIN ARCHITECTS. IT IS THE PROPERTY OF SIMPSON DAWBIN ARCHITECTS AND IS NOT TO BE REPRODUCED OR TRANSMITTED IN ANY FORM OR BY ANY MEANS, ELECTRONIC OR MECHANICAL, INCLUDING PHOTOCOPYING, RECORDING, OR BY ANY INFORMATION STORAGE AND RETRIEVAL SYSTEM, WITHOUT THE WRITTEN PERMISSION OF SIMPSON DAWBIN ARCHITECTS.									PROJECT / FILE No 040803	DATE of ORGN 20/08/04	
												DRAWING No A1041	ISSUE DA	REVISION D

SCHEDULE OF FINISHES

- frgr. framed glass panels, reversible
- st.c. fine formed structural concrete
- mp. metal panels
- tcp terra cotta panels or glazed brick
- cco corrugated sheet steel colorbond
- hdz Hot zinc dipped structural steel section
- ssg 300mm half round gutters Stainless steel



CONTRACTORS MUST VERIFY ALL DIMENSIONS ON SITE BEFORE STARTING WORK.
© COPYRIGHT SIMPSON DAWBIN

<table border="1"> <tr><td>1</td><td></td><td></td></tr> <tr><td>2</td><td></td><td></td></tr> <tr><td>3</td><td></td><td></td></tr> <tr><td>4</td><td></td><td></td></tr> <tr><td>5</td><td></td><td></td></tr> <tr><td>6</td><td></td><td></td></tr> <tr><td>7</td><td></td><td></td></tr> <tr><td>8</td><td></td><td></td></tr> <tr><td>9</td><td></td><td></td></tr> <tr><td>10</td><td></td><td></td></tr> <tr><td>11</td><td></td><td></td></tr> <tr><td>12</td><td></td><td></td></tr> <tr><td>13</td><td></td><td></td></tr> <tr><td>14</td><td></td><td></td></tr> <tr><td>15</td><td></td><td></td></tr> <tr><td>16</td><td></td><td></td></tr> <tr><td>17</td><td></td><td></td></tr> <tr><td>18</td><td></td><td></td></tr> <tr><td>19</td><td></td><td></td></tr> <tr><td>20</td><td></td><td></td></tr> <tr><td>21</td><td></td><td></td></tr> <tr><td>22</td><td></td><td></td></tr> <tr><td>23</td><td></td><td></td></tr> <tr><td>24</td><td></td><td></td></tr> <tr><td>25</td><td></td><td></td></tr> <tr><td>26</td><td></td><td></td></tr> <tr><td>27</td><td></td><td></td></tr> <tr><td>28</td><td></td><td></td></tr> <tr><td>29</td><td></td><td></td></tr> <tr><td>30</td><td></td><td></td></tr> <tr><td>31</td><td></td><td></td></tr> <tr><td>32</td><td></td><td></td></tr> <tr><td>33</td><td></td><td></td></tr> <tr><td>34</td><td></td><td></td></tr> <tr><td>35</td><td></td><td></td></tr> <tr><td>36</td><td></td><td></td></tr> <tr><td>37</td><td></td><td></td></tr> <tr><td>38</td><td></td><td></td></tr> <tr><td>39</td><td></td><td></td></tr> <tr><td>40</td><td></td><td></td></tr> <tr><td>41</td><td></td><td></td></tr> <tr><td>42</td><td></td><td></td></tr> <tr><td>43</td><td></td><td></td></tr> <tr><td>44</td><td></td><td></td></tr> <tr><td>45</td><td></td><td></td></tr> <tr><td>46</td><td></td><td></td></tr> <tr><td>47</td><td></td><td></td></tr> <tr><td>48</td><td></td><td></td></tr> <tr><td>49</td><td></td><td></td></tr> <tr><td>50</td><td></td><td></td></tr> <tr><td>51</td><td></td><td></td></tr> <tr><td>52</td><td></td><td></td></tr> <tr><td>53</td><td></td><td></td></tr> <tr><td>54</td><td></td><td></td></tr> <tr><td>55</td><td></td><td></td></tr> <tr><td>56</td><td></td><td></td></tr> <tr><td>57</td><td></td><td></td></tr> <tr><td>58</td><td></td><td></td></tr> <tr><td>59</td><td></td><td></td></tr> <tr><td>60</td><td></td><td></td></tr> <tr><td>61</td><td></td><td></td></tr> <tr><td>62</td><td></td><td></td></tr> <tr><td>63</td><td></td><td></td></tr> <tr><td>64</td><td></td><td></td></tr> <tr><td>65</td><td></td><td></td></tr> <tr><td>66</td><td></td><td></td></tr> <tr><td>67</td><td></td><td></td></tr> <tr><td>68</td><td></td><td></td></tr> <tr><td>69</td><td></td><td></td></tr> <tr><td>70</td><td></td><td></td></tr> <tr><td>71</td><td></td><td></td></tr> <tr><td>72</td><td></td><td></td></tr> <tr><td>73</td><td></td><td></td></tr> <tr><td>74</td><td></td><td></td></tr> <tr><td>75</td><td></td><td></td></tr> <tr><td>76</td><td></td><td></td></tr> <tr><td>77</td><td></td><td></td></tr> <tr><td>78</td><td></td><td></td></tr> <tr><td>79</td><td></td><td></td></tr> <tr><td>80</td><td></td><td></td></tr> <tr><td>81</td><td></td><td></td></tr> <tr><td>82</td><td></td><td></td></tr> <tr><td>83</td><td></td><td></td></tr> <tr><td>84</td><td></td><td></td></tr> <tr><td>85</td><td></td><td></td></tr> <tr><td>86</td><td></td><td></td></tr> <tr><td>87</td><td></td><td></td></tr> <tr><td>88</td><td></td><td></td></tr> <tr><td>89</td><td></td><td></td></tr> <tr><td>90</td><td></td><td></td></tr> <tr><td>91</td><td></td><td></td></tr> <tr><td>92</td><td></td><td></td></tr> <tr><td>93</td><td></td><td></td></tr> <tr><td>94</td><td></td><td></td></tr> <tr><td>95</td><td></td><td></td></tr> <tr><td>96</td><td></td><td></td></tr> <tr><td>97</td><td></td><td></td></tr> <tr><td>98</td><td></td><td></td></tr> <tr><td>99</td><td></td><td></td></tr> <tr><td>100</td><td></td><td></td></tr> </table>	1			2			3			4			5			6			7			8			9			10			11			12			13			14			15			16			17			18			19			20			21			22			23			24			25			26			27			28			29			30			31			32			33			34			35			36			37			38			39			40			41			42			43			44			45			46			47			48			49			50			51			52			53			54			55			56			57			58			59			60			61			62			63			64			65			66			67			68			69			70			71			72			73			74			75			76			77			78			79			80			81			82			83			84			85			86			87			88			89			90			91			92			93			94			95			96			97			98			99			100			<p>NOTES.</p> <p>1. THIS DEVELOPMENT DESIGN MUST NOT BE REPRODUCED IN WHOLE OR PART WITHOUT WRITTEN PERMISSION OF THE DESIGN ARCHITECT.</p>	<p>QUANTITY SURVEYOR</p>	<p>ELECTRICAL ENGINEER</p>	<p>STRUCTURAL ENGINEER</p>	<p>MECHANICAL ENGINEER</p>	<p>PROJECT NORTH WARNERVALE STATION</p>	<p>PROJECT STAGE DEVELOPMENT APPROVAL SERIES</p>	<p>DRAWING NORTH / SOUTH LONG SECTION</p>	<p>CLIENT RAILCORP</p>	<p>SIMPSON DAWBIN ARCHITECTS. U48 No14 NARABANG WAY BELROSE NSW 2085 TELEPHONE: +612 9486 3003 FAX +612 9486 3004 email simpsondawbin@ozemail.com.au</p>	<table border="1"> <tr><td>CONCEPT</td><td>DES</td><td>DEV</td><td>DRAWN</td><td>CHECK</td><td>VERIFIED</td><td>SCALE</td></tr> <tr><td>R/Simpson</td><td>R/Simpson</td><td>R/Simpson</td><td>R/Simpson</td><td>R/Simpson</td><td>R/Simpson</td><td>1/100</td></tr> <tr><td>PROJECT / FILE No</td><td colspan="5"></td><td>DATE of ORIGIN</td></tr> <tr><td>040803</td><td colspan="5"></td><td>20/08/04</td></tr> <tr><td>DRAWING No</td><td colspan="5"></td><td>ISSUE</td></tr> <tr><td>A1051</td><td colspan="5"></td><td>DA</td></tr> <tr><td></td><td colspan="5"></td><td>D</td></tr> </table>	CONCEPT	DES	DEV	DRAWN	CHECK	VERIFIED	SCALE	R/Simpson	R/Simpson	R/Simpson	R/Simpson	R/Simpson	R/Simpson	1/100	PROJECT / FILE No						DATE of ORIGIN	040803						20/08/04	DRAWING No						ISSUE	A1051						DA							D
1																																																																																																																																																																																																																																																																																																																																																																								
2																																																																																																																																																																																																																																																																																																																																																																								
3																																																																																																																																																																																																																																																																																																																																																																								
4																																																																																																																																																																																																																																																																																																																																																																								
5																																																																																																																																																																																																																																																																																																																																																																								
6																																																																																																																																																																																																																																																																																																																																																																								
7																																																																																																																																																																																																																																																																																																																																																																								
8																																																																																																																																																																																																																																																																																																																																																																								
9																																																																																																																																																																																																																																																																																																																																																																								
10																																																																																																																																																																																																																																																																																																																																																																								
11																																																																																																																																																																																																																																																																																																																																																																								
12																																																																																																																																																																																																																																																																																																																																																																								
13																																																																																																																																																																																																																																																																																																																																																																								
14																																																																																																																																																																																																																																																																																																																																																																								
15																																																																																																																																																																																																																																																																																																																																																																								
16																																																																																																																																																																																																																																																																																																																																																																								
17																																																																																																																																																																																																																																																																																																																																																																								
18																																																																																																																																																																																																																																																																																																																																																																								
19																																																																																																																																																																																																																																																																																																																																																																								
20																																																																																																																																																																																																																																																																																																																																																																								
21																																																																																																																																																																																																																																																																																																																																																																								
22																																																																																																																																																																																																																																																																																																																																																																								
23																																																																																																																																																																																																																																																																																																																																																																								
24																																																																																																																																																																																																																																																																																																																																																																								
25																																																																																																																																																																																																																																																																																																																																																																								
26																																																																																																																																																																																																																																																																																																																																																																								
27																																																																																																																																																																																																																																																																																																																																																																								
28																																																																																																																																																																																																																																																																																																																																																																								
29																																																																																																																																																																																																																																																																																																																																																																								
30																																																																																																																																																																																																																																																																																																																																																																								
31																																																																																																																																																																																																																																																																																																																																																																								
32																																																																																																																																																																																																																																																																																																																																																																								
33																																																																																																																																																																																																																																																																																																																																																																								
34																																																																																																																																																																																																																																																																																																																																																																								
35																																																																																																																																																																																																																																																																																																																																																																								
36																																																																																																																																																																																																																																																																																																																																																																								
37																																																																																																																																																																																																																																																																																																																																																																								
38																																																																																																																																																																																																																																																																																																																																																																								
39																																																																																																																																																																																																																																																																																																																																																																								
40																																																																																																																																																																																																																																																																																																																																																																								
41																																																																																																																																																																																																																																																																																																																																																																								
42																																																																																																																																																																																																																																																																																																																																																																								
43																																																																																																																																																																																																																																																																																																																																																																								
44																																																																																																																																																																																																																																																																																																																																																																								
45																																																																																																																																																																																																																																																																																																																																																																								
46																																																																																																																																																																																																																																																																																																																																																																								
47																																																																																																																																																																																																																																																																																																																																																																								
48																																																																																																																																																																																																																																																																																																																																																																								
49																																																																																																																																																																																																																																																																																																																																																																								
50																																																																																																																																																																																																																																																																																																																																																																								
51																																																																																																																																																																																																																																																																																																																																																																								
52																																																																																																																																																																																																																																																																																																																																																																								
53																																																																																																																																																																																																																																																																																																																																																																								
54																																																																																																																																																																																																																																																																																																																																																																								
55																																																																																																																																																																																																																																																																																																																																																																								
56																																																																																																																																																																																																																																																																																																																																																																								
57																																																																																																																																																																																																																																																																																																																																																																								
58																																																																																																																																																																																																																																																																																																																																																																								
59																																																																																																																																																																																																																																																																																																																																																																								
60																																																																																																																																																																																																																																																																																																																																																																								
61																																																																																																																																																																																																																																																																																																																																																																								
62																																																																																																																																																																																																																																																																																																																																																																								
63																																																																																																																																																																																																																																																																																																																																																																								
64																																																																																																																																																																																																																																																																																																																																																																								
65																																																																																																																																																																																																																																																																																																																																																																								
66																																																																																																																																																																																																																																																																																																																																																																								
67																																																																																																																																																																																																																																																																																																																																																																								
68																																																																																																																																																																																																																																																																																																																																																																								
69																																																																																																																																																																																																																																																																																																																																																																								
70																																																																																																																																																																																																																																																																																																																																																																								
71																																																																																																																																																																																																																																																																																																																																																																								
72																																																																																																																																																																																																																																																																																																																																																																								
73																																																																																																																																																																																																																																																																																																																																																																								
74																																																																																																																																																																																																																																																																																																																																																																								
75																																																																																																																																																																																																																																																																																																																																																																								
76																																																																																																																																																																																																																																																																																																																																																																								
77																																																																																																																																																																																																																																																																																																																																																																								
78																																																																																																																																																																																																																																																																																																																																																																								
79																																																																																																																																																																																																																																																																																																																																																																								
80																																																																																																																																																																																																																																																																																																																																																																								
81																																																																																																																																																																																																																																																																																																																																																																								
82																																																																																																																																																																																																																																																																																																																																																																								
83																																																																																																																																																																																																																																																																																																																																																																								
84																																																																																																																																																																																																																																																																																																																																																																								
85																																																																																																																																																																																																																																																																																																																																																																								
86																																																																																																																																																																																																																																																																																																																																																																								
87																																																																																																																																																																																																																																																																																																																																																																								
88																																																																																																																																																																																																																																																																																																																																																																								
89																																																																																																																																																																																																																																																																																																																																																																								
90																																																																																																																																																																																																																																																																																																																																																																								
91																																																																																																																																																																																																																																																																																																																																																																								
92																																																																																																																																																																																																																																																																																																																																																																								
93																																																																																																																																																																																																																																																																																																																																																																								
94																																																																																																																																																																																																																																																																																																																																																																								
95																																																																																																																																																																																																																																																																																																																																																																								
96																																																																																																																																																																																																																																																																																																																																																																								
97																																																																																																																																																																																																																																																																																																																																																																								
98																																																																																																																																																																																																																																																																																																																																																																								
99																																																																																																																																																																																																																																																																																																																																																																								
100																																																																																																																																																																																																																																																																																																																																																																								
CONCEPT	DES	DEV	DRAWN	CHECK	VERIFIED	SCALE																																																																																																																																																																																																																																																																																																																																																																		
R/Simpson	R/Simpson	R/Simpson	R/Simpson	R/Simpson	R/Simpson	1/100																																																																																																																																																																																																																																																																																																																																																																		
PROJECT / FILE No						DATE of ORIGIN																																																																																																																																																																																																																																																																																																																																																																		
040803						20/08/04																																																																																																																																																																																																																																																																																																																																																																		
DRAWING No						ISSUE																																																																																																																																																																																																																																																																																																																																																																		
A1051						DA																																																																																																																																																																																																																																																																																																																																																																		
						D																																																																																																																																																																																																																																																																																																																																																																		