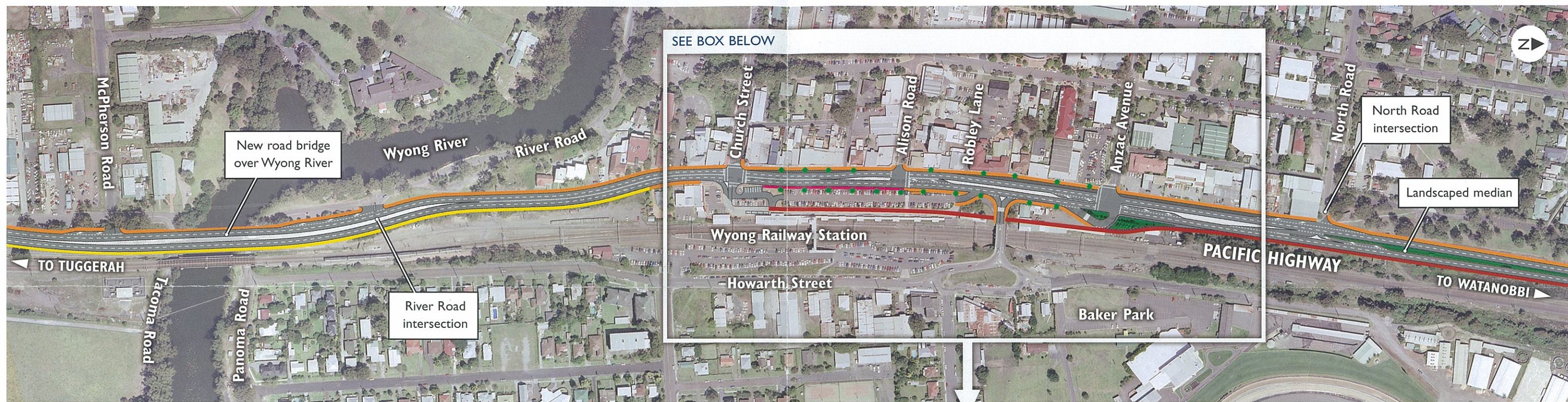


# Pacific Highway, Wyong Preferred option – widen existing carriageway



The preferred option alignment would:

- Allow two through lanes in each direction.
- Retain business and retail exposure to passing traffic.
- Retain parking in the town centre generally on the western side of the highway between Church Street and North Road.
- Remove parking on the eastern side of the Pacific Highway.
- Retain the transport interchange in its current configuration with the loss of some parking in the commuter car park (which would need to be replaced with more parking on the eastern side of the railway station).
- Provide convenient pedestrian crossings across the Pacific Highway between Church Street and Anzac Avenue.
- Allow Church Street and Anzac Avenue traffic to circulate into and out of the township.
- Integrate the existing palm trees into the future town centre design.
- Incorporate the Wyong heritage theme into the the future town centre design.

