



PLANTING LIST

TREES	Botanical Name	Common Name
	<i>Angophora costata</i>	Sydney Red Gum
	<i>Angophora floribunda</i>	Rough-barked Apple
	<i>Corymbia gummifera</i>	Red Bloodwood
	<i>Corymbia maculata</i>	Spotted Gum
	<i>Eucalyptus haemastoma</i>	Scabby Gum
	<i>Eucalyptus ptilorhiza</i>	Blackbutt
	<i>Melaleuca quinquepervia</i>	Brood-leaved Paperbark

SHRUBS/ GROUNDCOVERS	Botanical Name	Common Name
	<i>Acacia californica</i>	Knife-leaved Wattle [3-5m]
	<i>Acacia rubida</i>	Red-stemmed Wattle [3-5m]
	<i>Banksia laevis</i>	Swamp Heath Myrtle [0.9-1.5m]
	<i>Banksia marginata</i>	Silver Banksia [3-5m]
	<i>Banksia rubra</i>	Swamp Banksia [0.9-1.5m]
	<i>Correa decumbens</i>	Correa [0.2-0.3m]
	<i>Croton exaltata</i>	Small Croton [0.45-0.6m]
	<i>Grevillea caleyi</i>	Caley's Grevillea [1.5-3m]
	<i>Grevillea x gaudichaudii</i>	Grevillea [0.3-0.45m]
	<i>Hibbertia obtusifolia</i>	Hoary Guinea [0.45-0.6m]
	<i>Logania olifera</i>	Logania [1.5-3m]
	<i>Melaleuca armillaris</i>	Giant Honeymyrtle [3-5m]
	<i>Melaleuca arida</i>	Swamp Paperbark [5-10m]
	<i>Phibotheca baezifolia</i>	Wax Flowers [0.45-0.6m]
	<i>Philotheca myoporoides</i>	Long-Leaf Wax Flowers [0.9-1.5m]

HERBS/ GRASSES	Botanical Name	Common Name
	<i>Austrodiplo species</i>	Spargass
	<i>Australanthemia hemlock</i>	Woolly Grass
	<i>Dianella caerulea</i>	Paroo Lily
	<i>Leurochrysum albicans</i>	Hoary Sunray
	<i>Poa effinis</i>	Tussock Grass
	<i>Poa sinbariana</i>	Grey Tussock Grass

BIORETENTION/ WETLAND	Botanical Name	Common Name
	<i>Boumea articulata</i>	Jointed Twig-Rush
	<i>Schoenoplectus validus</i>	River Club-Rush
	<i>Carex aprosa</i>	Tail Sedge
	<i>Carex birchenoviana</i>	Sedge
	<i>Lomandra fluviatilis</i>	River Lomandra
	<i>Juncus usitatus</i>	Common Rush

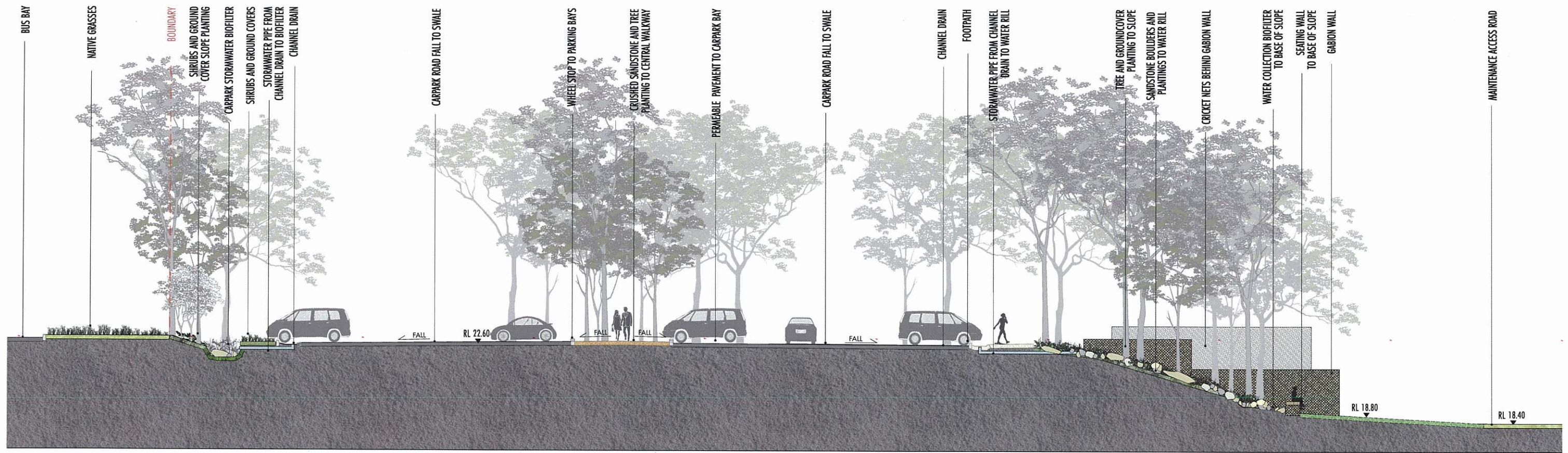
LEGEND

- SITE BOUNDARY
- R. 20.40 FINISHED LEVEL LANDSCAPE
- ASPHALT PAVEMENT TO INTERNAL ROAD/CARPARKING
- INSITU CONCRETE PAVEMENT WITH EXPOSED SANDSTONE AGGREGATE
- HARD COVER MULTI PURPOSE SPORTS SURFACE
- SAFETY SURFACE TO PLAY AREA
- LAWN AREA / SPORTS FIELD
- TRAFFICABLE GRASS PAVEMENT
- SHRUB AND GROUNDCOVER PLANTING TO SLOPES
- STORMWATER BIORETENTION AREA
- EXISTING TREE & LEVELS TO BE RETAINED
- PROPOSED TREE
- SHRUBS/GROUNDCOVERS/GRASSES
- CRUSHED SANDSTONE WALKWAY AREA
- RECYCLED SANDSTONE FACED GABION WALL
- SANDSTONE BOULDER SALVAGED FROM SITE ROCK
- SANDSTONE STEPS SALVAGED & CUT FROM SITE ROCK
- TIMBER BENCH ON TOP OF GABION WALL @ 600mm ABOVE FL
- RECLAIMED TIMBER SLEEPERS
- 'BALL STOP' NYLON NET
- SECTION REFERENCES

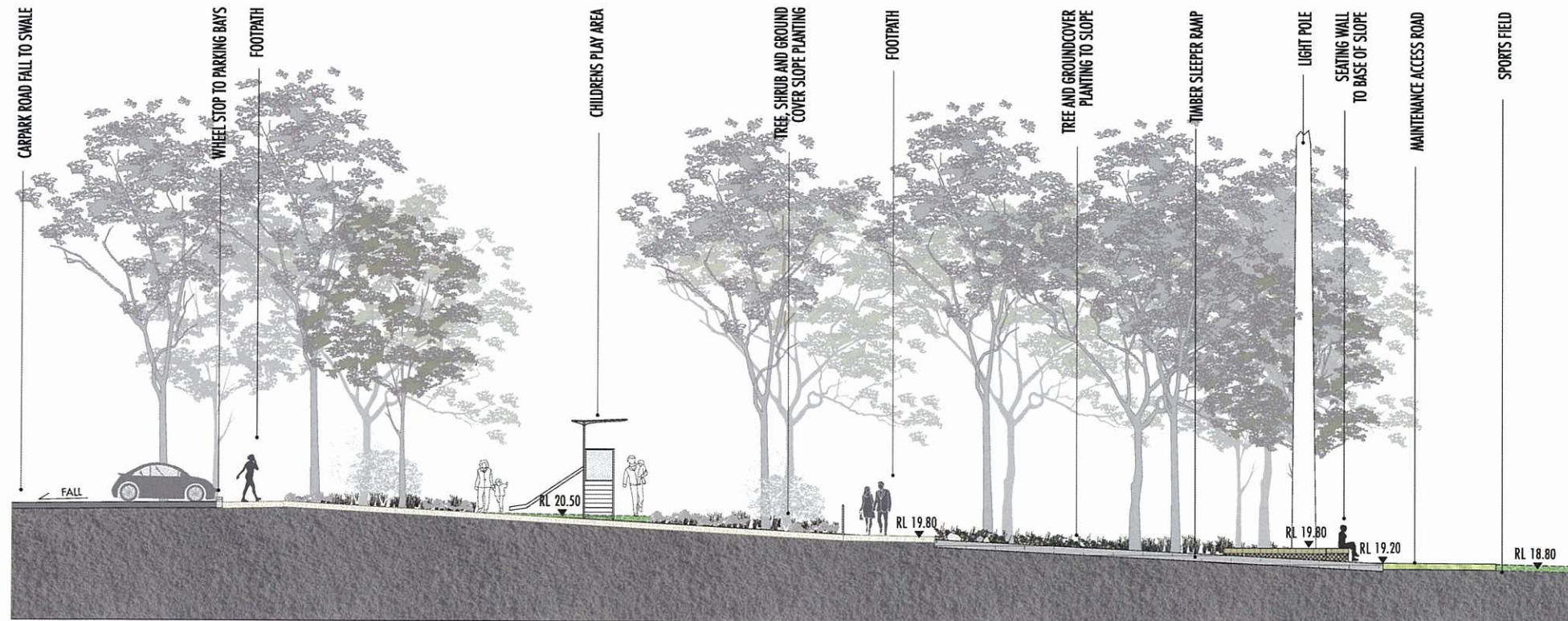
- NB - POST & RAIL FENCE TO BOUNDARY - MIN. 1M SETBACK TO ALL BATTERS
- NB - ALL EXISTING TREES TO BE RETAINED WHERE POSSIBLE AND WHERE INDICATED
- NB - ALL PLANTING TO BE ENDEMIC

PROGRAM

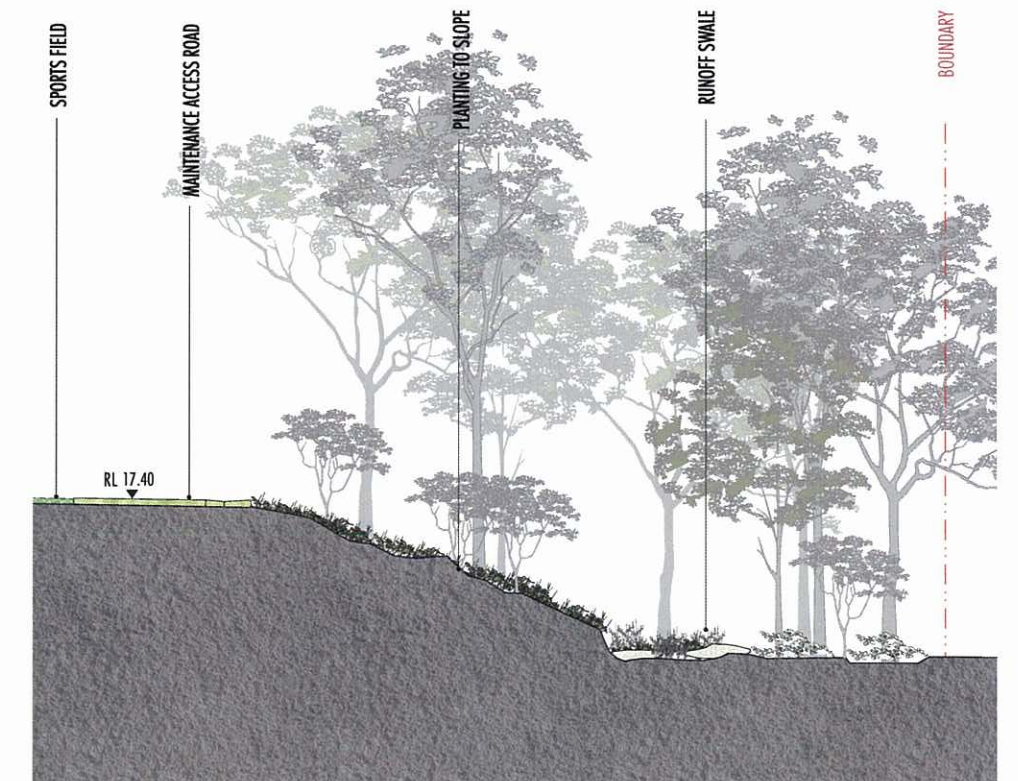
- 1 OVALS / PITCHES WITH 8M HIGH BALL-STOP FENCE TO NORTHERN EDGE
- 2 LIGHT POLES (6) TO ENG. SPEC.
- 3 CRICKET NETS
- 4 4m WIDE MAINTENANCE ACCESS ROAD WITH 1M GRASS DRAINAGE SWALE TO PERIMETER
- 5 AMENITIES BUILDING REFER TO ARCHITECTS DWG.
- 6 UNCOVERED BBQ AREA & PICNIC TABLES
- 7 MULTI SPORTS COURTS WITH LIGHTING (NO FENCING) + SECONDARY SPILL-OVER PARKING - 40 CARSPACES
- 8 DRAINAGE SWALE RUNOFF FROM MSC
- 9 SPILL-OVER CARPARK - 38 CARSPACES - FINISHED LEVELS ACCOMMODATE EXISTING TREES
- 10 ACCESS PATH/STEPS THROUGH EXISTING TREES
- 11 BRIDGE OVER SWALE/MAINTENANCE VEHICLE ACCESS
- 12 TIMBER SEATING
- 13 CHILDRENS PLAY AREA
- 14 CARPARK - 117 SPACES (INCLUDES 4 DISABLED/PRAM SPACES AND MOTORCYCLE PARKING)
- 15 REMOVABLE BOLLARDS
- 16 ENTRY/EXIT REFER TO ENG. DWG.
- 17 BUS PARKING/DROP-OFF BAYS
- 18 CARPARK DRAINAGE SWALE
- 19 WATER RILL SPILLOUT FROM CARPARK CHANNEL DRAIN
- 20 DRAINAGE SWALE AT BASE OF SLOPE
- 21 BALL-STOP FENCE



SECTION A-A THROUGH CARPARK - SCALE 1:100



SECTION B-B THROUGH ENTRY PATH - SCALE 1:100



SECTION C-C THROUGH SLOPE - SCALE 1:100

Notes

The information contained in this document is copyright and may not be used or reproduced for any other project or purpose.

Verify all dimensions and levels on site and report any discrepancies prior to the commencement of work.

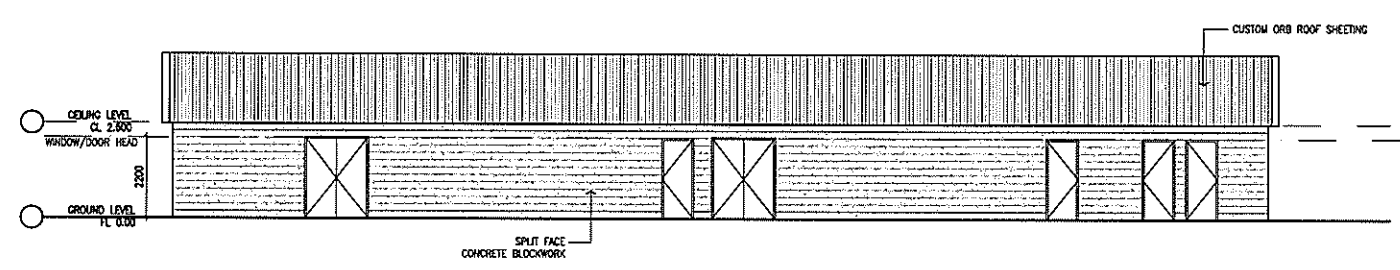
Drawings are to be read in conjunction with all contract documents.

Use figured dimensions only. Do not scale from drawings.

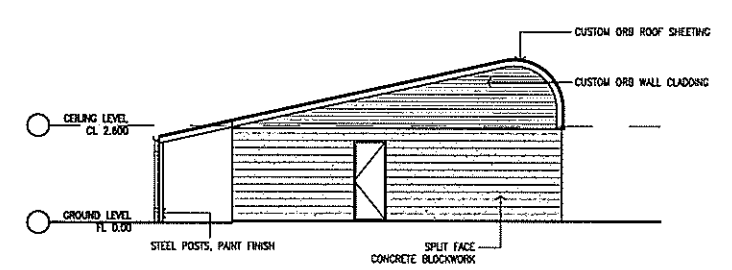
Suters Architects cannot guarantee the accuracy of content and format for copies of drawings issued electronically.

The completion of the final details checked and authorized section below is confirmation of the status of the drawing. The drawing shall not be used for construction unless endorsed 'For Construction' and authorized for issue.

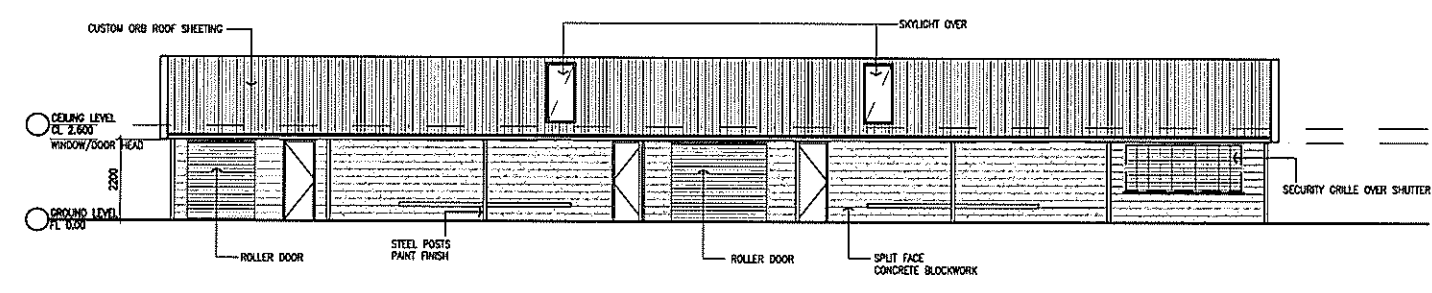
Legend



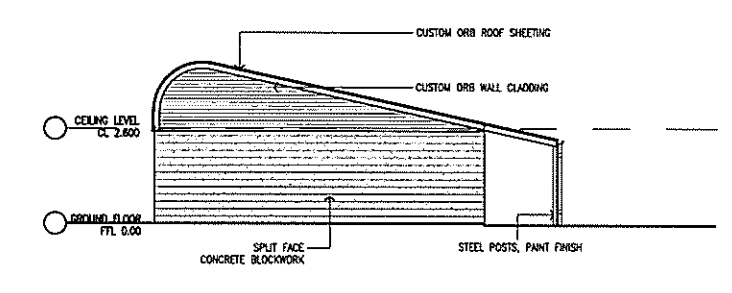
1 NORTH ELEVATION
1:100



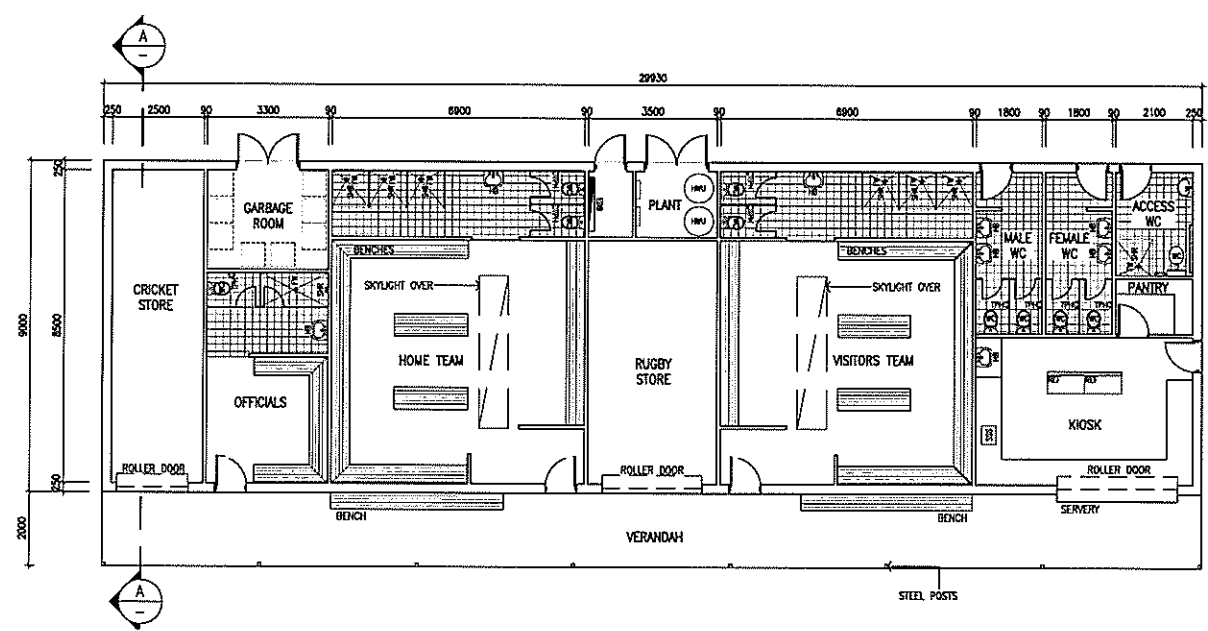
2 WEST ELEVATION
1:100



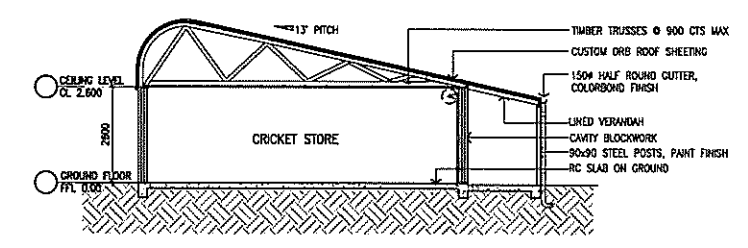
3 SOUTH ELEVATION
1:100



4 EAST ELEVATION
1:100



5 PLAN
1:100



6 SECTION A
1:100

Issue	Description	Date	CHK	APP
B	DRAWING ISSUE	31/10/07	MS	MS
A	PRELIMINARY ISSUE	29/10/07	MS	MS

© SUTERS ARCHITECTS PTY LTD
ABN 35 859 825 189
www.sutersarchitects.com.au

Project
Woongarah Sportsfield

Location
Hakone Road Woongarah

Client
Northrop Engineers

Drawing
Plan, Section & Elevations

Scale	Date	Drawn
1:100	October 2007	LL

File name
Z:\3002\55074501_Woongarah Sportsfield\0-Curves\p1.dwg

Project number	Drawing Number	Issue
8501	DA01	B

suters