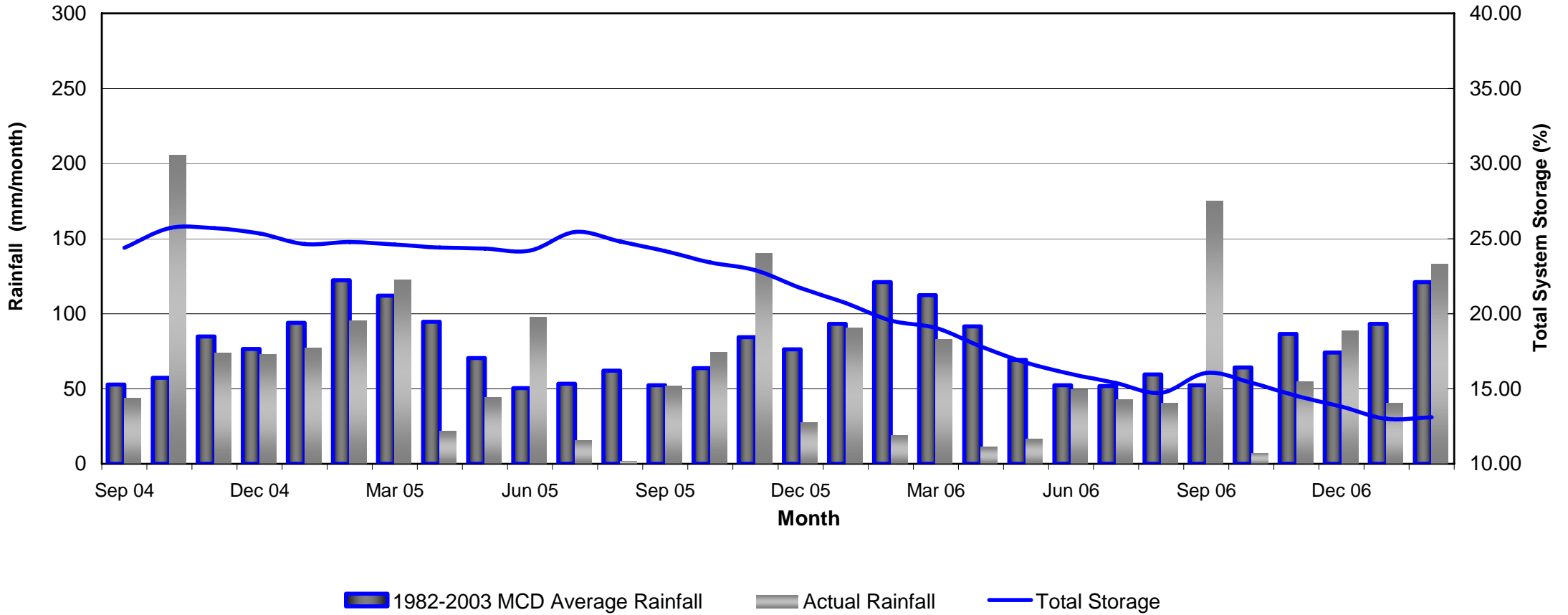
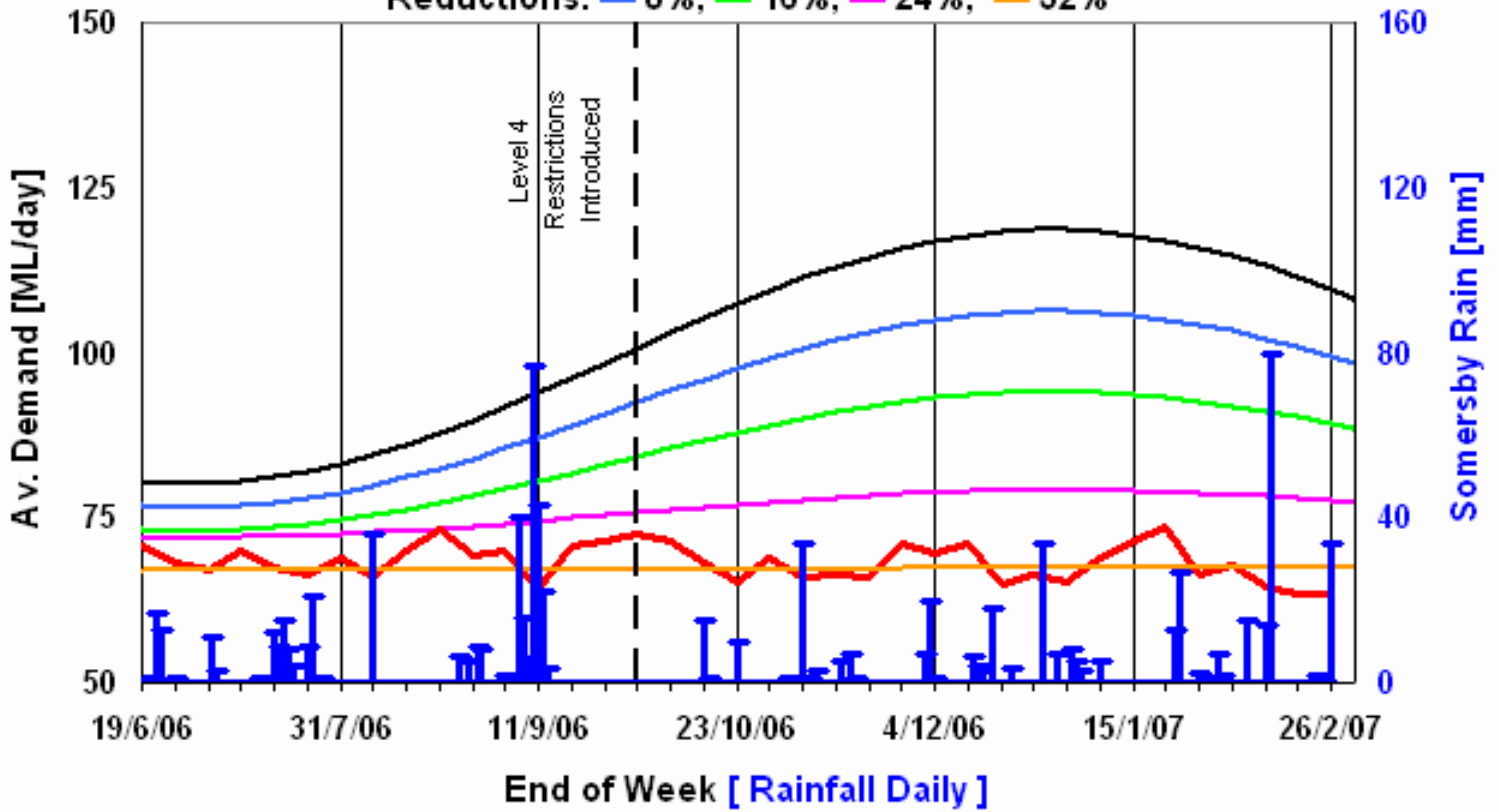


**Mangrove Creek Dam Rainfall
V's
Total System Storage**



Gosford & Wyong Weekly Average Daily Demand as at 26.2.07

— Recorded Demand, — Unrestricted Demand
 Reductions: — 8%, — 16%, — 24%, — 32%



- 1 **Black Line** Wyong Shire's normal demand when no restrictions are in place.
- 2 **Blue line** 8% reduction (based on the 'black line') over the entire year.
- 3 **Green Line** 16 % reduction (based on the 'black line') over the entire year.
- 4 **Pink Line** 24% reduction (based on the 'black line') over the entire year.
- 5 **Orange Line** 32% reduction (based on the 'black line') over the entire year.
- 6 **Blue bars** rainfall at Somersby in mm/day.
- 7 **Red line** Wyong Shire's average daily demand.