

5. IMPLEMENTATION CIVIC PLAZA

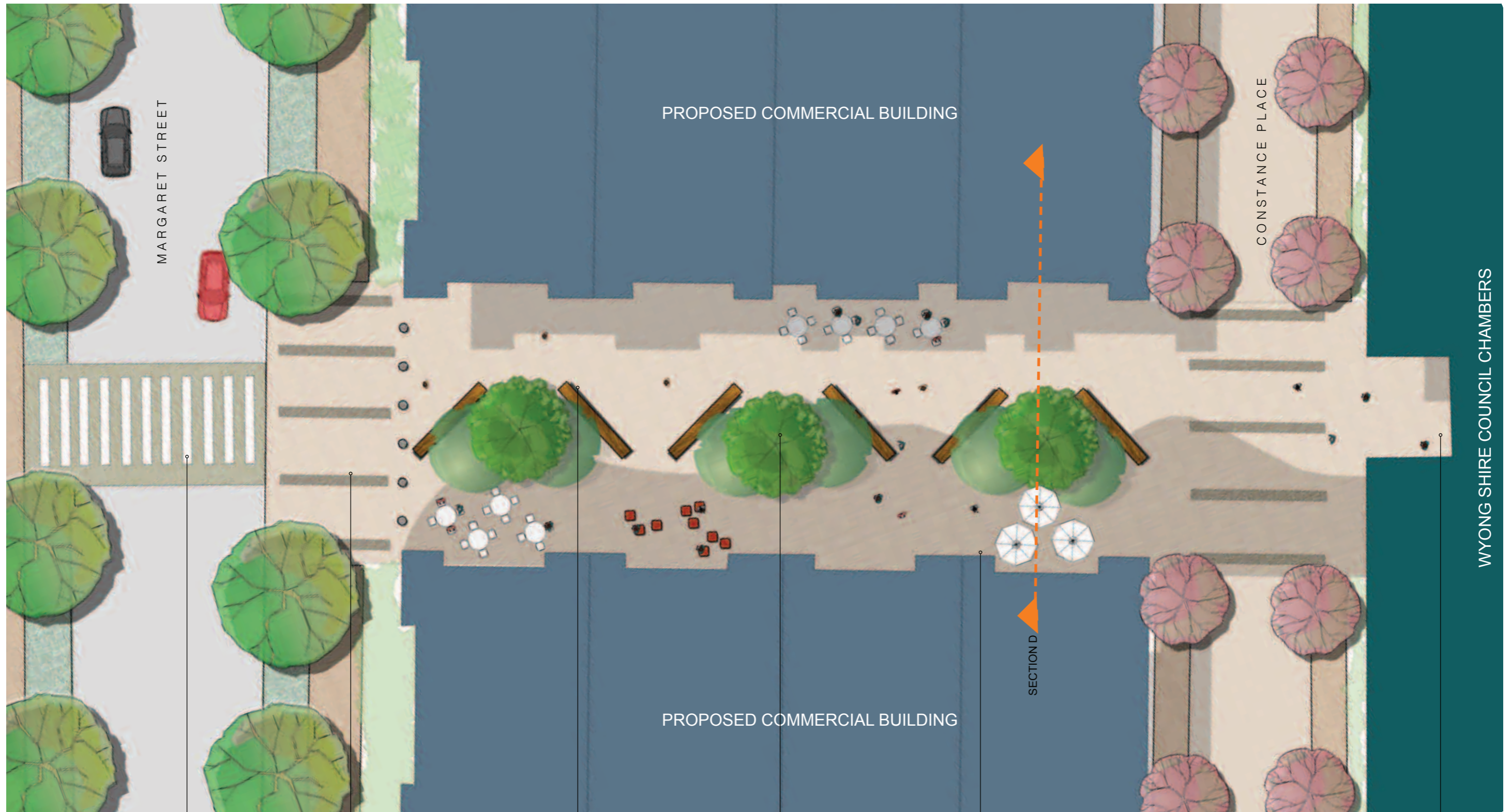
5.4 CIVIC PLAZA



FIGURE 25. ARTISTS IMPRESSION OF CIVIC PLAZA

5. IMPLEMENTATION CIVIC PLAZA

CONCEPT PLAN- CIVIC PLAZA



WYONG SHIRE COUNCIL CHAMBERS

Proposed raised pedestrian crossing across Margaret Street

Pavement detail to define extent of the plaza.

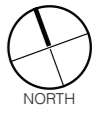
Proposed informal stacked wooden seating symbolic of the timber industry of early Wyong.

Deciduous tree planting within the plaza to provide maximum solar access.

Small retail outlets on the ground floor of commercial buildings.

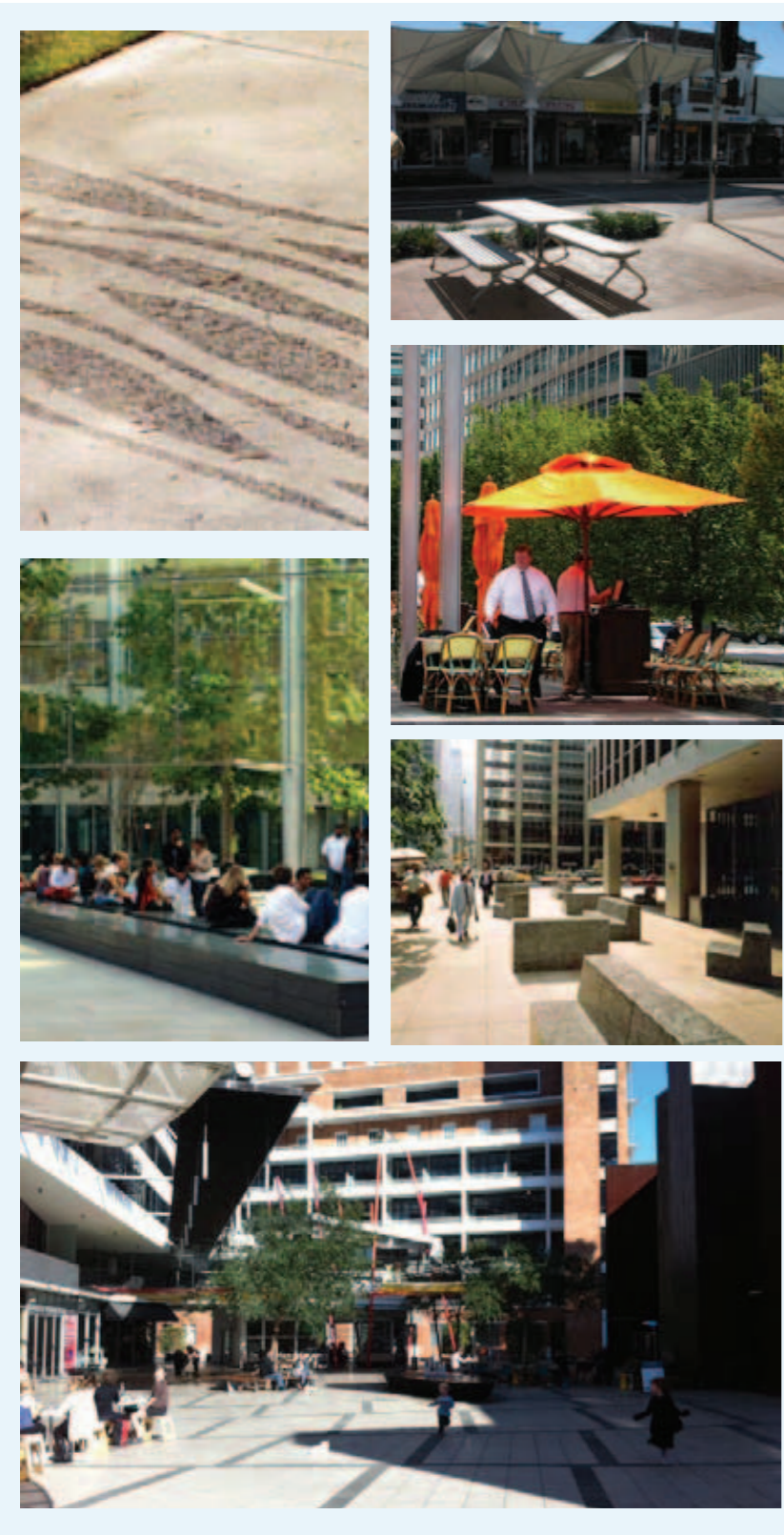
Open the western entry to Wyong Shire Council for community use.

FIGURE 26. PROPOSED CONCEPT PLAN CIVIC PLAZA



5. IMPLEMENTATION CIVIC PLAZA

THEMING IMAGES



CONCEPT SECTION



SECTION D CIVIC PLAZA

5. IMPLEMENTATION LANEWAY NETWORK



FIGURE 27. ARTISTS IMPRESSION OF LANEWAY NODE

5. IMPLEMENTATION LANEWAY NETWORK

CONCEPT PLAN- LANEWAY NODE

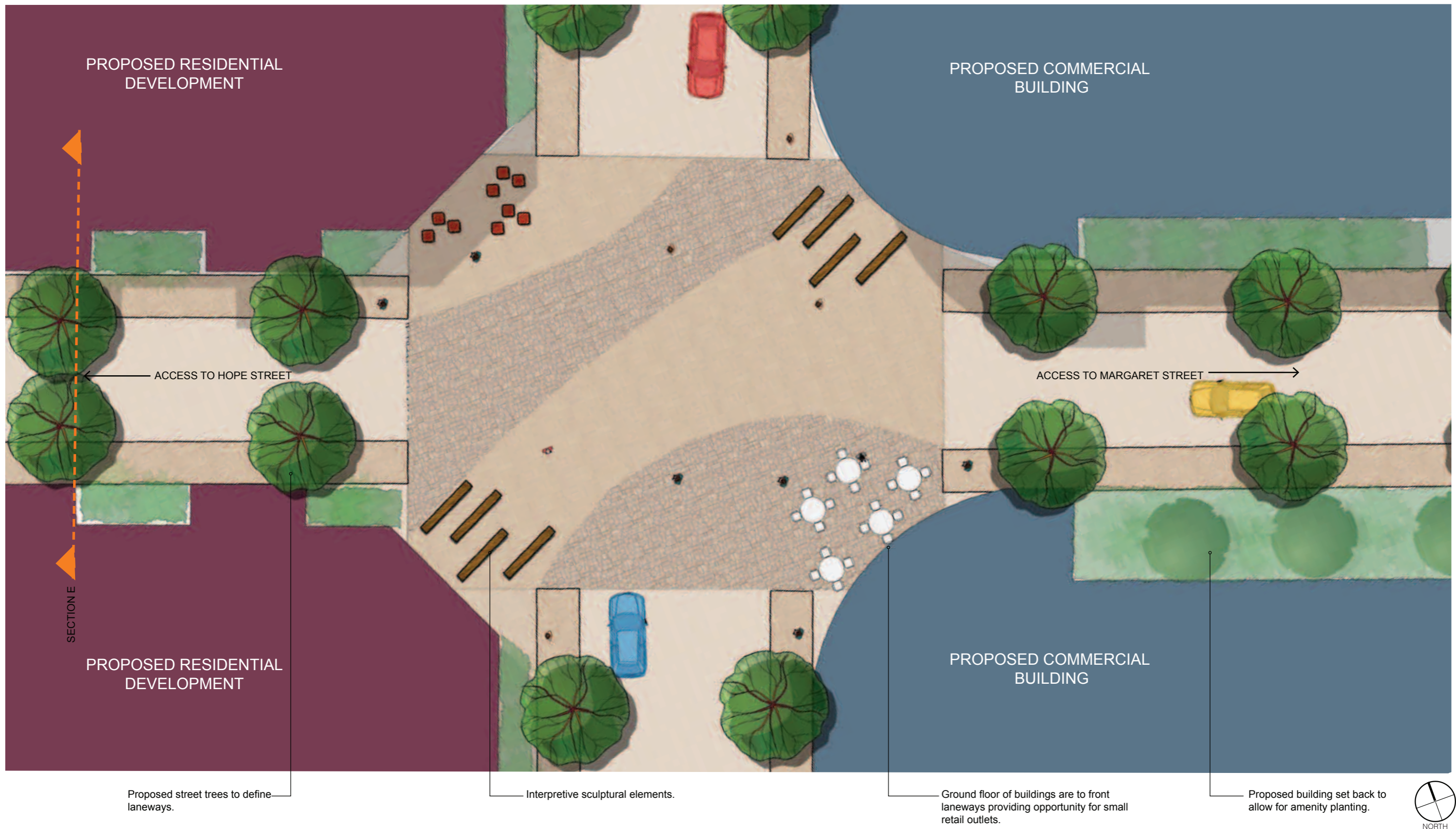


FIGURE 28. PROPOSED LANEWAY NODE CONCEPT PLAN

5. IMPLEMENTATION LANEWAY NETWORK

THEMING IMAGES



CONCEPT SECTION



SECTION E TYPICAL LANEWAY TREATMENT

5. IMPLEMENTATION STREETScape PRINCIPLES

5.6 STREETScape PRINCIPLES



FIGURE 29. ARTISTS IMPRESSION OF ANZAC AVENUE STREETScape UPGRADE