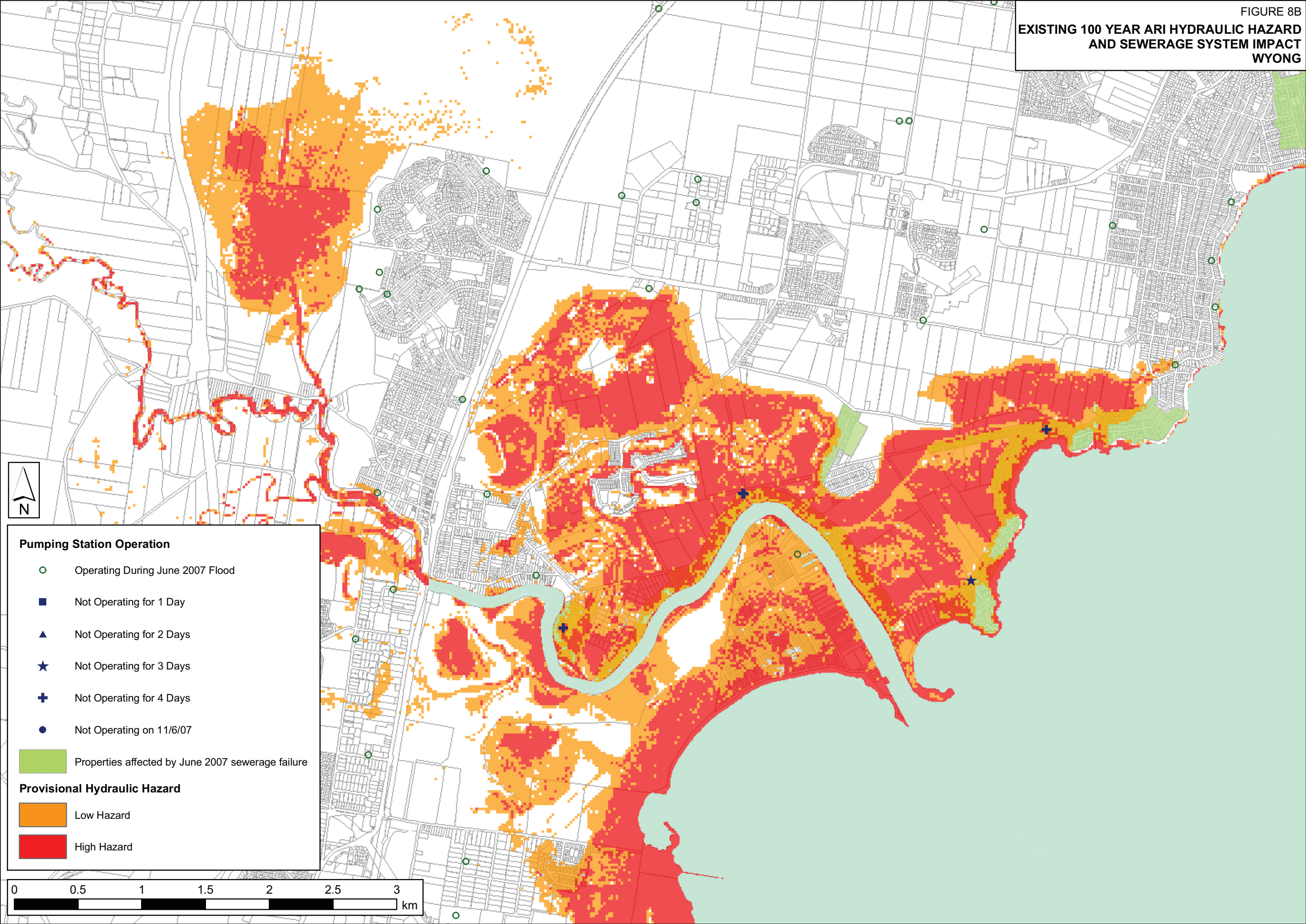


FIGURE 8B  
EXISTING 100 YEAR ARI HYDRAULIC HAZARD  
AND SEWERAGE SYSTEM IMPACT  
WYONG



**Pumping Station Operation**

- Operating During June 2007 Flood
- Not Operating for 1 Day
- ▲ Not Operating for 2 Days
- ★ Not Operating for 3 Days
- ⊕ Not Operating for 4 Days
- Not Operating on 11/6/07

■ Properties affected by June 2007 sewerage failure

**Provisional Hydraulic Hazard**

- Low Hazard
- High Hazard

