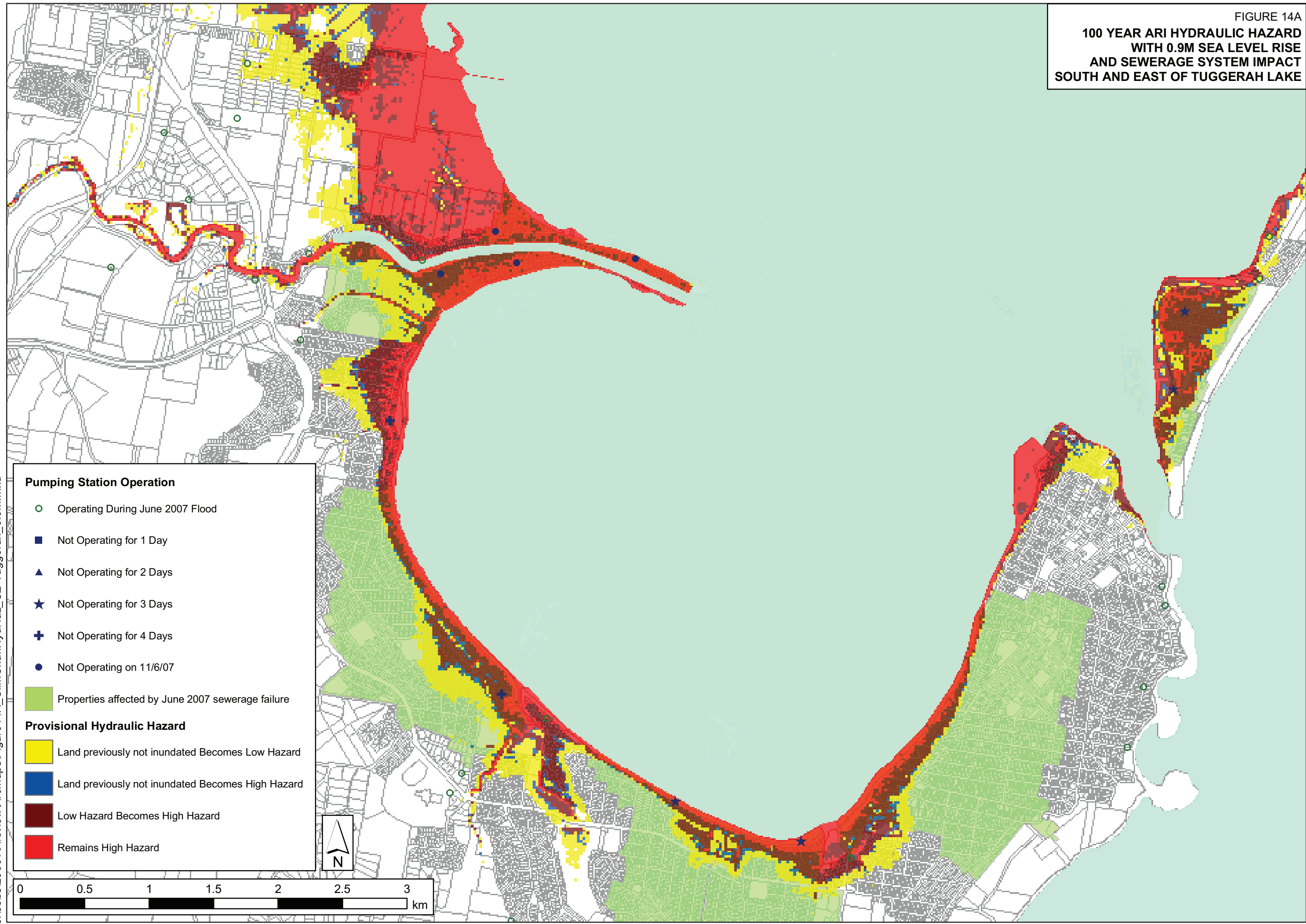


FIGURE 14A
 100 YEAR ARI HYDRAULIC HAZARD
 WITH 0.9M SEA LEVEL RISE
 AND SEWERAGE SYSTEM IMPACT
 SOUTH AND EAST OF TUGGERAH LAKE



Pumping Station Operation

- Operating During June 2007 Flood
- Not Operating for 1 Day
- ▲ Not Operating for 2 Days
- ★ Not Operating for 3 Days
- ⊕ Not Operating for 4 Days
- Not Operating on 11/6/07

■ Properties affected by June 2007 sewerage failure

Provisional Hydraulic Hazard

- Land previously not inundated Becomes Low Hazard
- Land previously not inundated Becomes High Hazard
- Low Hazard Becomes High Hazard
- Remains High Hazard

J:\Jobs\29001\Arcview\Arcmaps\Figure 14A_ClimChanHydHaz_SE-Tuggerah_0.9m.mxd