

5.3 Report of the Central Coast Water Corporation

TRIM REFERENCE: F2011/02670 - D03099413

MANAGER: Michael Whittaker; General Manager

AUTHOR: Rod Williams; Senior Manager

SUMMARY

Gosford and Wyong Councils have requested regular updates on the actions of the Central Coast Water Corporation Board.

RECOMMENDATION

That Council note the report on the activities of the Report of the Central Coast Water Corporation.

BACKGROUND

The Central Coast Water Corporation was created by an act of the NSW Government; *The Central Coast Water Corporation Act 2006* and amendments.

The Act was proclaimed by the NSW Governor on 25 February 2011 following the submission by both the Gosford City and Wyong Shire Council of a Constitution and a Voting Shareholders Agreement. On 21 December 2011 the Corporation formally came into being with the appointment of the five (5) Directors:

Chair Mr John Read
Director Margaret Haseltine
Director Abigail Goldberg
Director Peter Wilson
Director Michael Whittaker

In the absence of Peter Wilson and Michael Whittaker, Stephen Glen and Greg McDonald were nominated as Deputy Directors by the two councils.

A Senior Manager has been appointed to support the work of the Corporation and to organise and support the functioning of the meeting and activities of the Corporation and Directors. The Board has agreed to Wyong Shire Council providing secretarial and financial support. As the Corporation is a separate organisation independent of the two Councils; separate accounting, computer systems, file and document registry and company address have been established to support the work of the Corporation.

The Board is currently in an establishment phase. The Corporation does not have any staff or resources. Funding is provided by the two Councils until the Corporation has its own funding from revenue from the water and sewerage business. The Corporation is represented on the Project Control Group and is working closely with the two Councils on the implementation plan and the various stages developing the Corporation to a fully functioning water authority.

An orientation and briefing was held for the Directors in December 2011 with a tour of the Councils' water and sewerage facilities and support services on the Central Coast.

The first formal meeting was held in February 2012 and in the 2011/12 year the Corporation held 5 formal meetings.

At the CCROC meetings of Councils held on 28th June 2012 the Councils approved a Statement of Corporate Intent that had been submitted to the Councils in accordance with the legislation and Service Level and Funding Agreement. The Councils also approved a service Level and Funding Agreement which has been submitted to the Corporation for its consideration.

MONTHLY REPORT

On 27 July 2012 the corporation held a Strategic Planning Workshop professionally facilitated and attended by senior staff of both councils.

The outcome of the workshop was the development of a Vision and Mission for the Corporation. A work plan and budget for the 2012/13 year is still to be developed along with a Statement of Corporate Intent for 2012/13 financial year. The Workshop has provided the necessary support information for the preparation of these documents.

A formal meeting of the corporation was held after the workshop to consider the outcomes of the workshop.

Other matters considered by the corporation were:

- Appointment of an Auditor

The Corporation agreed to appoint PricewaterhouseCoopers as the auditor for a period of 6 years. The accounting firm has been requested to undertake audits for 2010/11 and 2011/12 to enable an Annual general Meeting to be held between the two Voting Shareholders and the Corporation (scheduled for November 2012).

- Corporate Governance Framework and Codes of Meeting Practice

The Board agreed to request the General Managers of both Councils to have the Senior Legal Advisor of Gosford City Council and the Executive Manager to the General Manager of Wyong Shire Council review the current drafts of the Governance Framework and the Codes of Meeting Practice.

- Obligations Checklist

The Board requested the Senior Manager to provide an amended Obligations checklist based on the revised corporate documents.

- Engagement Forum with the Unions

The Board agreed to hold a lunch with members of the Engagement Forum prior to the 13 September Board meeting.

- Inquiry into the adequacy of water storage in NSW

The Board noted the information provided.

- June 2012 Financial Report

The Board noted the report provided.

- Communication between the Board and the Project Control Group (PCG)

The three independent Directors of the Corporation have been invited to attend all PCG meetings and Work Group Leaders of the PCG have been requested to draw on the expertise of the CCWC Directors.

The Corporation is monitoring issues and providing advice to the Councils on matters of consequence to the councils. In the last financial year it provided advice in regard to water restrictions and in the current year will shortly be reviewing the capital works programs of both Councils to provide advice on priorities and expenditure.

ATTACHMENTS

Nil.

5.4 Joint Water and Sewer Capital Projects

TRIM REFERENCE: F2011/02197 - D03101273

MANAGER: Greg McDonald, Director Infrastructure Management

AUTHOR: Daryl Mann; Manager Water and Sewer

SUMMARY

Attached is a table which shows joint water projects currently undertaken by Wyong Shire Council.

A total of \$10.2 M has been budgeted this financial year for projects within Wyong Shire. The majority of this allocation is associated with the finalisation of the Mardi to Mangrove Link Project (\$7.3 M) which will need to be revised down at the next review and modifications to Water Pumping Station 17 at Ourimbah (\$1.3 M).

A further \$8.3 M has been allocated this year for projects within Gosford City. The majority of this expenditure (\$6.5 M) is associated with upgrades required to Somersby Water Treatment Plant.

There are no joint sewerage projects being undertaken.

It is anticipated that commencing next month, Gosford City Council's projects will also be included in the attachment.

RECOMMENDATION

That Council receive the report on Joint Water and Sewer Capital Projects.

ATTACHMENTS

- 1 Water Sewer Projects - July 2012 D03101855

Project Name	Project Budget (\$)	Current Project Expenditures (\$)	Current FY Budget (\$)	Current YTD Expenditures (\$)	Status
1. Mardi Dam Improvement Works			369,000		
a. Mardi Bush Regeneration	160,000	0	0	0	completion over 3 years
b. Security Mardi Fencing	135,000	133,063	0	0	Completed
c. New Intake Tower Rock Face	0	0	0	0	Completed
d. Mardi Road Works	145,000	186,405	0	0	Completed
e. Erosion & Sed Improvements	130,000	127,482	0	0	Completed
f. New Boom Filter	35,000	0	0	0	to be completed by June 2013
g. Miscellaneous Improvement Works	240,000	0	0	0	Completed
h. Demolition of the Old Intake Tower	430,000	20,000	0	0	to be completed by June 2013
i. Project Management (for Items a to h)	120,000		41000	691	to be completed by June 2013
2. Ourimbah Pump Station WPS 17					
a. Power Supply Upgrade to 400 Amps	270,000		310,000	28,430	to be completed by Sept 2012
b. Upgrade Pump Station WPS 17	830,000	966	910,000	0	to be completed by June 2013
c. Project Management	175,000	13,375	180,000	1,375	to be completed by June 2013
3. Mardi to Mangrove Pipe Line	120,600,000	114,000,000	7,300,000	147,861	Completed
4. Mardi Dam Curtin Concept	510,000	66,438	300,000	64,701	to be completed by June 2013
5. Mardi Water Filter Replacement	450,000	28,430	500,000	3,606	to be completed by June 2013
5. WPS 2 pump Replacement	60,000	0	60,000	0	to be completed by October 2013
6. Water Treatment Plant Fencing	75,000	0	75,000	0	to be completed by June 2013
7. Mardi Water Plant Process Improvements	150,000	0	150,000	0	to be completed by June 2013
8. Gosford Distribution Works (excludes WPS 17)	1,225,000		1,100,000		

9. Lower Mooney Dam Remediation	0	0		0	0	No longer required
10. GCC Water Trunk Mains	577,507					
11. Somersby Water Filtration Plant Upgrade	6,500,000					

5.5 Works in Progress - Water Supply and Sewerage

TRIM REFERENCE: F2004/07830 - D03075249

MANAGER: Daryl Mann; Manager Water and Sewerage Operations

AUTHOR: Vanessa Trzcinka; Technical Operations Engineer Water and Sewerage Operations

SUMMARY

Water supply and sewerage works in progress and completed for June and July 2012.

RECOMMENDATION

That Council receive the report on Works in Progress - Water Supply and Sewerage.

WATER SUPPLY

The table below is a status report of current major new and upgrade water projects.

Item Description	Est Cost \$	Start Date	% Spent	% Comp	Est Comp Date	Comments
Bateau Bay Charmhaven Killarney Vale Ourimbah The Entrance Toukley Tuggerah Watanobbi Wyong	400,000	Jul 2012	4	8	Jun 2013	This is an ongoing valve and hydrant replacement programme to improve water quality and system efficiency in the nominated areas. This work is being funded by the Water and Sewerage Operations and Maintenance Program.
Goorama Ave, San Remo – Stage 1	62,000	Jul 2012	50	50	Aug 2012	Work has been scheduled to relocate approximately 130m of 100mm, 150mm and 200mm diameter water pipe in aid of road and drainage upgrade works. This work will be completed between Richardson Rd and Catalina Rd, San Remo and is being partially funded by Roads and Stormwater and Water and Sewerage Capital Works Program.

5.5

Works in Progress - Water Supply and Sewerage (contd)

Item Description	Est Cost \$	Start Date	% Spent	% Comp	Est Comp Date	Comments
Tonkiss St Tuggerah	7,500	Jun 2012	18	80	Aug 2012	<p>Construction of the concrete pit has been completed and the fabrication of the steel pit lid is due to be completed by August 2012.</p> <p>The installation of 150mm by-pass and pressure reducing valve was completed in May and provides a secondary supply of water to Burbank Drive subdivision to improve operations and water quality.</p> <p>This work is being funded by Water and Sewerage Capital Works Program.</p>

SEWERAGE

The table below is a status report of current major new and upgrade sewerage projects.

Location	Est Cost \$	Start Date	% Spent	% Comp	Est Comp Date	Comments
Bateau Bay Berkeley Vale Blue Haven Budgewoi Buff Point Gorokan Killarney Vale Lake Munmorah Long Jetty Watanobbi Wyong	150,000	Jul 2012	5	8	Jun 2013	<p>Ongoing sewer main and manhole replacement and adjustment works are underway to improve system reliability and to reduce blockages and possible overflows.</p> <p>Council's maintenance program of CCTV inspections identifies those sections of sewer mains, manholes and junctions that cause operational problems due to root infestation and stormwater infiltration.</p> <p>This work is being funded by the Water and Sewerage Operations and Maintenance Program.</p>
Pearce Rd, Wyongah	40,000	Jul 2012	40	35	Aug 2012	<p>Sewage Pumping Station T15 has been de-commissioned and the sewage diverted to pumping station C13. This minimised the loading in the Toukley catchment and eliminated pump station operation and maintenance costs.</p> <p>The pipe work and diversion has been in operation for 4 weeks.</p> <p>Electrical and mechanical works are due to be completed by August 2012.</p> <p>This work is being funded by Water and Sewerage Capital Works Program.</p>

PROCESS**Water Treatment**

All treated water produced by Mardi Water Treatment Plant, for the period 1 to 30 June 2012 and 1 to 31 July 2012 met the health requirements of the Australian Drinking Water Guidelines produced by the National Health and Medical Research Council.

Sewage Treatment

The effluent discharged from Toukley Sewage Treatment Plant, for the period 1 to 30 June 2012 and 1 to 31 July 2012 has met Environmental Protection Authority Licence requirements.

Sewage Overflows

There were three reported sewage overflows that occurred for the period 1 to 30 June 2012.

An escape of sewage occurred on June 6, 2012 at sewage pumping station MP8 in Andrew St Lake Munmorah as a result of an unplanned power outage in the suburbs of Lake Munmorah, Toukley and Noraville. Although liquid sewage leaked through the overflow pipe at the pumping station the incident had minimal environmental impact and the affected area was cleaned.

The second sewage overflow occurred on June 8, 2012 in Brandon Cl, Budgewoi as a result of a broken pipe caused by material deterioration on sewage rising main T27. Liquid sewage leaked through the broken pipe however, the incident had minimal environmental impact and the affected area was cleaned.

The third sewage overflow occurred on June 11, 2012 on Eastern Rd, Bateau Bay as a result of a broken sewer gravity main caused by a reclaimed water pipe that was bored through Council sewer main. Although liquid sewage leaked through the broken pipe the incident had minimal environmental impact.

The above incidences were reported to Council's Environment Hotline and investigated by Council's Regulation and Compliance section, however due to the minor nature of the incidences, they were not reported to external authorities.

There was one reported sewage overflow that occurred for the period 1 to 31 July 2012.

An escape of sewage occurred on July 27, 2012 at sewage pumping station T27 in Woodland Parkway Budgewoi as a result of a broken pipe caused by material deterioration on sewage rising main T27. Liquid sewage leaked through the broken pipe which resulted in a minor overflow of sewage into Budgewoi Lake. There was minimal environmental impact on the surrounding area. The affected area was cleaned; appropriately sign posted and local pedestrians advised.

This incident was reported to Council's Environment Hotline and the Office of Environment and Heritage, NSW Department of Public Health, Work Cover and Fire and Rescue.

As sewage pumping station T27 pressure main has failed on two occasions in different locations over the last 2 months a condition assessment will be undertaken on the pipe to determine the cause of the failures.

WATER STORAGE

Sunday, 12 August 2012				
DAM STORAGES				
Storage	Capacity Full [ML]	Volume in Storage [ML]	Percent Full [%]	Storage Change over last week[ML]
Mangrove Dam	190,000	91,635	48.2	Down 213
Mardi Dam	7,400	4,395	59.4	Up 128
Mooney Dam	4,600	4,447	96.7	Down 120
Total	202,000	100,477	49.7	Down 205
Total Dam Storage this time last month was			49.1 Percent	
Total Dam Storage this time last year was			36.6 Percent	
GROUNDWATER & HUNTER TRANSFERS (ML)				
Period	Groundwater	From Hunter	To Hunter	
Week to Date	4.4	0.0	0.0	
This year to date	96.7	0.0	0.0	
RAINFALL(mm)				
Period	Somersby WTP	Mardi WTP	Mangrove Dam	
Week to Date	4	13	0	
Previous Week	0	0	0	
Current week last year	16	6	13	
This year to date	985	939	620	
Same period last year	1,268	1,149	749	
Water Usage (ML)				
Period	Usage			
Week to Date	464			
Previous Week	497			
Percent change from previous week	6.8 % less			
Current week last year	464			
Percent change from same week last year	0.1 % less			
This year to date	15,395			
Same period last year	16,411			
Percent change from same period last year	6.2 % less			

Mardi to Mangrove Dam Transfer (ML)	
Period	Transfer
Last week	0
This year to date	11,996
Total to date	13,080

ATTACHMENTS

Nil.

5.6 Central Coast Tourism Inc - Update

TRIM REFERENCE: F2004/07096 - D03061448

MANAGER: Brett Phillips, Manager Economic and Property Development

AUTHOR: Daniele Siviero; Property Development Officer

SUMMARY

Reporting on the on the March to June 2012 quarterly report on Central Coast Tourism Inc.

RECOMMENDATION

That Council receive the report on Central Coast Tourism Inc - Update .

BACKGROUND

On 1 September 2010 a Memorandum of Understanding between Wyong Shire Council and Central Coast Tourism was signed by the Chief Executive officers of both organisations.

Central Coast Tourism (CCT) has now provided a report for the June 2012 quarter of progress against actions in the Destination Management Plan and the deliverables in the MOU.

The April to June report listed the following key achievements:

1. New major events secured including World Youth Baseball 2012, NSW Regional Senior Rugby Union Championships, SEGRA Conference 2012, NSW Surf Lifesaving Championships 2013/2014 and 2012 Emirates Melbourne Cup Tour.
2. The Entrance Tourism and Economic Development Plan has been finalised. The Entrance soon to be listed on Tourism Australia investment opportunity guide.
3. Continued development of pilot mobile concierge program with Optus, Ad IQ and Wyong Shire Council for Central Coast Holiday Parks.
4. 52 Local Secrets of the Central Coast Campaign Launched with 20+ Central Coast Tourism members and Star FM Central Coast
5. Central Coast Tourism hosted Accessible Tourism Professor Simon Darcy at recent Northern Lakes Disability Tourism meeting. Three beach wheelchairs purchased and available for the community at Lakes Beach Kiosk.

Further work is still required against the deliverable to provide commitment to the Tourism strategy for the Northern part of the Shire; however this is being addressed through the development of a Regional Tourism Infrastructure and Investment Plan and Tourism Opportunity Plan.

ATTACHMENTS

- 1 Central Coast Tourism Inc. April - June 2012 Wyong Council Report Enclosure D03061435

5.7 Investment Report for July 2012

TRIM REFERENCE: F2009/01343 - D03093660

MANAGER: Stephen Naven; Chief Financial Officer

AUTHOR: Devini Susindran; Financial Accountant

SUMMARY

This report details Council's investments as at 31 July 2012.

RECOMMENDATION

That Council receive the Investment Report for July 2012.

BACKGROUND

WSC's investments are made in accordance with the Local Government Act (1993), the Local Government (General) Regulation (2005), Council's Investment Policy, Ministerial Investment Order issued February 2011 and Division of Local Government Investment Policy Guidelines published in May 2010.

Council's portfolio includes investments in managed funds held under the "grandfather" provisions of the current Ministers Order. The remaining investment in Blackrock Care and Maintenance Fund, continues to be wound up progressively and is expected to be liquidated by 2016.

CURRENT STATUS

Managed Funds

The Blackrock Care and Maintenance Fund, a "grandfathered" investment, is valued at \$5.53m, and produced an unrealised gain in July of \$0.08m or 1.14%. Further the fund made a Capital distribution of \$0.50m during the month, close to 8% of the remaining funds value.

The residual balance of the fund is held with distributions of capital being paid out, as assets in the fund mature or are sold.

The BlackRock Fund provided a mark-to-market return of +1.34% in July, comfortably outperforming bank bills. The fund's outperformance came as a result of a tightening of global credit spreads following renewed hopes of further actions undertaken by the European Central Bank (ECB) and US Federal Reserve (Fed). The fund continues to perform well over longer time periods with a return of over 6.3% p.a. since inception (3.8 years).

Cash and Term Deposit Funds

Cash flows in July were managed through investment maturities with a net out-flow of \$0.90m.

Table 1 Movement in Cash and Term deposits

Institution	Term (Approx. Months)	Interest Rate %	Maturity	Investment / (Redemption)
Movement in cash on call		3.60%		\$10,254,000
CBA	1	4.58%	July 2012	(\$6,140,000)
IMB	12	6.30%	July 2012	(\$5,000,000)
NAB	6	5.85%	July 2012	(\$5,000,000)
Bendigo Bank	6	5.85%	July 2012	(\$5,000,000)
NAB	4	5.95%	July 2012	(\$10,000,000)
NAB	4	5.90%	July 2012	(\$5,000,000)
Bendigo Bank	6	5.00%	Jan 2013	\$5,000,000
NAB	9	4.99%	Apr 2013	\$10,000,000
ING	6	5.13%	Jan 2013	\$5,000,000
ING	7	5.09%	Feb 2013	\$5,000,000
TOTAL				(\$886,000)

Return on cash and term deposits for July 2012 was \$0.66m.

Total Funds

Total net return for July 2012 was \$0.74m consisted of \$0.66m of interest earnings and \$0.08m of unrealised capital gains on the Blackrock Care and Maintenance Fund.

Table 2 Investment Portfolio by Risk Category

Investment Class	July 2012 \$ '000	YTD Return \$ '000	YTD %
Cash at Call	24,013	59	3.88
Term Deposits	123,007	604	5.79
Managed Funds	5,532	77	17.44
Total Investments	152,552	740	5.91

Year to date returns in July of 5.91% is favourable when comparing with the benchmark BBSW YTD Bank Bill Index of 3.74% and Council guidelines of BBSW + 10 basis points. The year to date return excluding capital gains on managed funds of \$0.08m is 5.28%.

Council investments are evaluated and monitored against a benchmark appropriate to the risk (Standard and Poor's BBB Long term or above) and time horizon of the investment concerned.

5.7 Investment Report for July 2012 (contd)

Cash-at-call was managed within normal levels with a further \$5m invested in Term deposits on 1 August 2012. In addition maturing term deposit with Commonwealth Bank was placed in a call account pending settlement of a long term investment in Bank of Queensland of \$6m on 2 August 2012.

The target maximum limit in each category and the current spread of investments is listed in Table 3. The portfolio is currently over-weight in A1 but this is a positive position due to these investments offering the best rates selected for the investment time frame.

Table 3 – Portfolio Credit Framework

Investment Category Short Term	Target Allocation Maximum	Portfolio Allocation July 2012	Comments
A1	10.0%	79.99%	
A2	75.0%	13.11%	
A3	10.0%	2.62%	
Unrated	15.0%	4.28%	Includes Managed Funds
TOTAL	110%	100.0%	

Investment transactions and earnings during July 2012 are shown in Table 4 - Portfolio Performance.

Table 4 – Portfolio Performance

	Full Year 2011-12 \$m	July 2012 \$m	Full Year 2012-13 \$m
Movement in Assets			
Opening Balance	136.86	153.81	153.81
Capital Gain/(Loss) – (see below)	(0.09)	0.08	0.08
Net Cash/Investments (Withdrawals)	17.04	(1.34)	(1.34)
Closing Balance	153.81	152.55	152.55
Trading Position			
Capital Gain/(Loss) Realised	-	-	-
Capital Gain/(Loss) Unrealised	(0.09)	0.08	0.08
Interest Earnings	8.14	0.66	0.66
Total Return for Period	8.05	0.74	0.74

Movements in investments comprised the changes in, valuation, new investments and redemptions during June shown in Table 5 – Changes in valuation and redemptions.

Table 5 Changes in valuation, new investments and redemptions.

Type of investment	Institution		\$m	\$m
Call deposit	Interest earned	Income	0.06	
	Net movement	Investment / (Redemption)	<u>10.25</u>	10.31
Term deposits	Ref. Table 1	Redemptions	(36.14)	
		Investments	<u>25.00</u>	(11.14)
Borrowing costs	Westpac deposit Fund	Amortisation	(0.01)	(0.01)
Managed Funds	Black Rock	Capital Distribution	(0.50)	
		Capital Gain /(Loss)	<u>0.08</u>	(0.42)
TOTAL				(1.26)

Interest and Investment Returns

Returns as at 31 July 2012 on council's investment portfolio of deposit accounts, term deposits and managed funds, show a \$0.16m or 28.70% favourable variance when compared to the budget for July 2012.

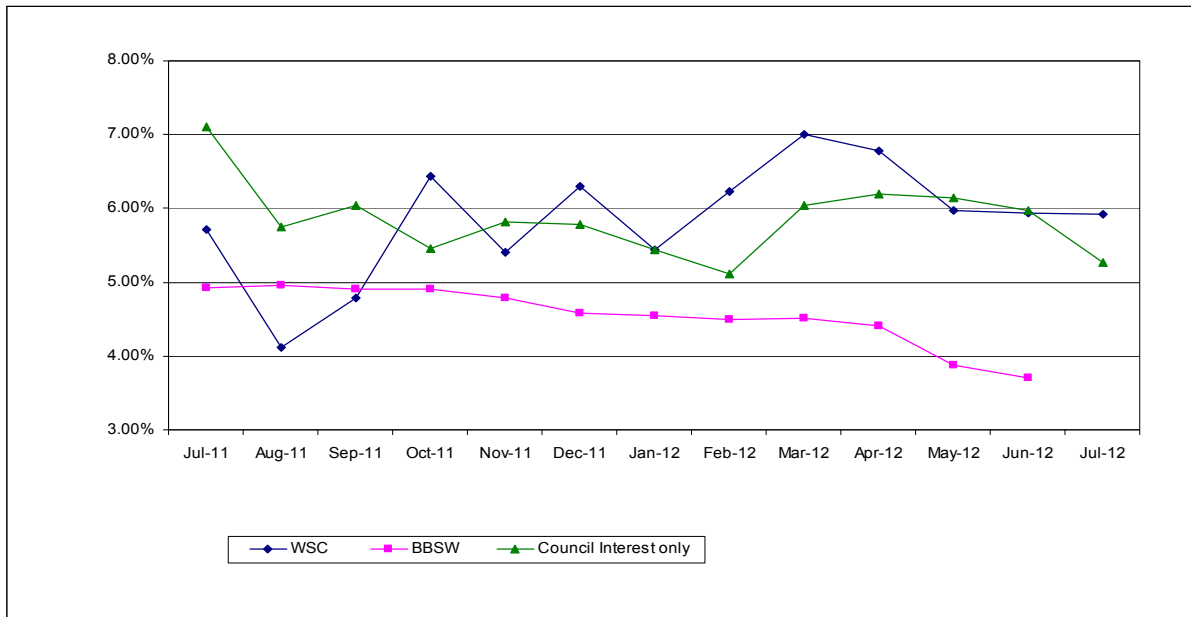
Table 6 Annual Investment Portfolio Performance as at 31 July 2012

Investment Source	FYR Revised Budget \$ '000	YTD Interest Actual \$ '000	YTD Change in valuation Actual \$ '000	YTD Net Actual \$ '000	YTD Net Budget \$ '000	Variation YTD Budget \$ '000
General Fund	4,170	393	46	439	348	91
Water	1,550	132	15	147	129	18
Sewerage	1,176	138	16	154	98	56
Total	6,896	663	77	740	575	165

Interest rates in the month, on term deposits ranged from 4.99% to 5.88% with the exception of Heritage Bank at 7.25% and these rates exceeded the benchmark Bank Bill Swap Rate (BBSW) for July of 3.58%.

Benchmark - Monthly Returns (Annualised)

Council's overall investment return is compared to the BBSW Bank Bill Index which is a cash index and therefore determines a minimum performance level. A graph detailing the monthly return on a 12 monthly basis is as follows:



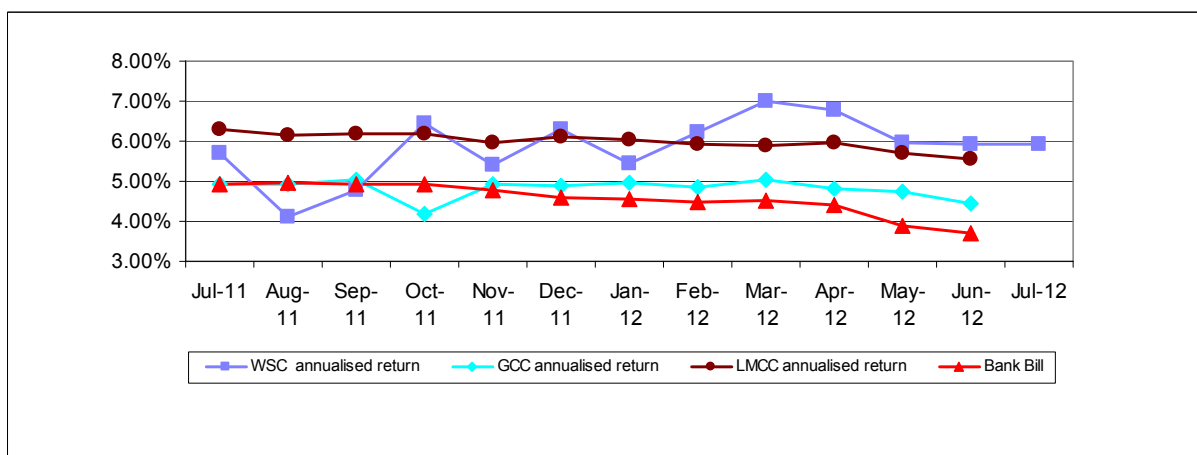
Council: *Council Total Return (Interest and Investments)*
 Bank Bill: *BBSW Bank Bill Index*
 Council Interest Only: *Council Interest Earnings*

Comparison to Neighbouring Councils

Council’s yield of 5.94% for June and 5.91% for July compare favourably to neighbouring Councils; Lake Macquarie City Council (5.55% - June) and Gosford City Council (4.44% - June).

There is a one month lag in the information available for neighbouring Councils as reports for July were not available at the time of writing this report.

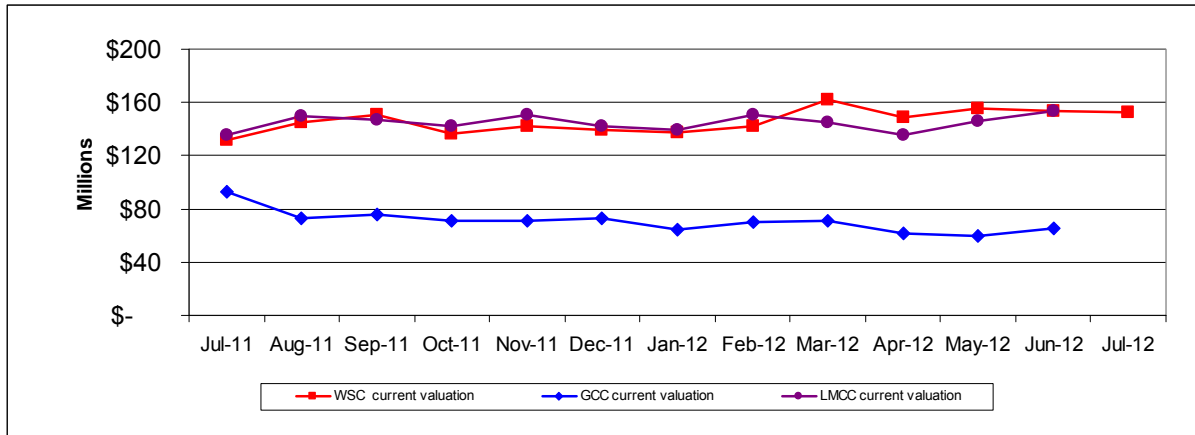
Table 8 Portfolio Return - Comparison to Neighbouring Councils



WSC’s investment portfolio at the end of June was \$153.81m and July was \$152.55m, demonstrating a strong cash position, and compares favourably with Lake Macquarie and Gosford City Councils (refer Table 9).

However Council's cash position must be viewed relative to its high debt levels (predominantly in the Water and Sewer Business) at the end of June 2012 and June 2011 amounting to \$197.58m and \$190.26m respectively. In comparison Gosford City Council and Lake Macquarie City Council held debts of \$132.75m and \$53.71m respectively at 30 June 2011.

Table 9 Total Investment – Comparison to Neighbouring Councils



INVESTMENT STATEMENT

In accordance with the Local Government (General) Regulation 2005, Part 9, Division 5, Clause 212, it is certified that the investments held as at 31 July 2012 have been made in accordance with the Act, the Regulations and Council's Investment Policies.

CONCLUSION

Council continues to allow its grandfathered managed funds to liquidate over time. The majority of investments are now held in term deposits in accordance with the provisions of the ministerial investment order.

Investments continue to be conservatively managed to ensure that value is added to the fixed interest portfolio and Council will continue to redefine its long term investment strategy as the level of managed funds in the portfolio reduces.

ATTACHMENTS

- 1 Summary of Investment by Type - July 2012 D03094089

Wyong Shire Council Summary of Investments - By Type As at 31 July 2012								
FUND MANAGER	TYPE OF INVESTMENT	RATINGS		MATURITY	PORTFOLIO	PORTFOLIO	INCOME FOR MONTH OF JULY	INTEREST RATES % p.a.
		Short Term	Long Term		BALANCE 30.06.12 \$	BALANCE 31.07.12 \$		
CASH AT CALL:								
Westpac	Corporate Investment Account (AA)	A1	AA	Daily	13,686,620	17,835,299	48,680	3.60
Commonwealth	At Call	A1	AA	Daily		6,174,342	11,229	3.50
UBS	Cash Account	A1	AA	Daily	13,513	4,004	0	
Total Cash At Call					13,700,133	24,013,645	59,909	
TERM DEPOSITS & BONDS								
<u>Short term deposits & bills</u>								
IMB	Term Deposit	A2	BBB	04/07/2012	5,000,000		2,589	6.30
Commonwealth	Term Deposit	A1	AA	13/07/2012	6,140,000		10,016	4.58
Bendigo/Adelaide	Term Deposit	A2	A	17/07/2012	5,000,000		12,822	5.85
NAB	Term Deposit	A1	AA	19/07/2012	5,000,000		14,424	5.85
NAB	Term Deposit	A1	AA	27/07/2012	10,000,000		40,754	5.95
NAB	Term Deposit	A1	AA	30/07/2012	5,000,000		23,438	5.90
Bankwest	Term Deposit	A1	AA	07/08/2012	5,000,000	5,000,000	23,356	5.50
Bendigo/Adelaide	Term Deposit	A2	A	27/08/2012	10,000,000	10,000,000	49,940	5.88
NAB	Term Deposit	A1	AA	30/08/2012	5,000,000	5,000,000	24,842	5.85
Westpac	Deposit Bond	A1	AA	24/09/2012	4,013,686	4,007,325	24,563	4.40
Bankwest	Term Deposit	A1	AA	26/09/2012	5,000,000	5,000,000	22,082	5.20
SunCorp	Term Deposit	A1	A	30/09/2012	10,000,000	10,000,000	50,279	5.92
Wyong Credit Union	Term Deposit	UNRATED	UNRATED	30/09/2012	1,000,000	1,000,000	4,756	5.60
SunCorp	Term Deposit	A1	A	24/10/2012	7,000,000	7,000,000	35,374	5.95
					83,153,686	47,007,325		
<u>Medium Term Deposits</u>								
SunCorp	Term Deposit	A1	A	02/11/2012	5,000,000	5,000,000	24,078	5.67
Bendigo/Adelaide	Term Deposit	A2	A	07/11/2012	5,000,000	5,000,000	23,993	5.65
SunCorp	Term Deposit	A1	A	22/11/2012	5,000,000	5,000,000	22,506	5.30
SunCorp	Term Deposit	A1	A	22/11/2012	5,000,000	5,000,000	22,506	5.30
ANZ	Term Deposit	A1	AA	06/12/2012	7,000,000	7,000,000	34,660	5.83
NAB	Term Deposit	A1	AA	27/12/2012	10,000,000	10,000,000	44,164	5.20
Bendigo/Adelaide	Term Deposit	A2	A	18/01/2013		5,000,000	8,219	5.00
ING	Term Deposit	A1	A	27/01/2013		5,000,000	2,811	5.13
ING	Term Deposit	A1	A	27/02/2013		5,000,000	2,789	5.09
NAB	Term Deposit	A1	AA	23/04/2013		10,000,000	5,468	4.99
					37,000,000	62,000,000		
<u>Non - Current</u>								
Westpac	Term Deposit	A1	AA	05/03/2014	10,000,000	10,000,000	49,005	5.77
Heritage	Senior Bond	A3	BBB	20/06/2017	4,000,000	4,000,000	24,630	7.25
					14,000,000	14,000,000		
Total Term Deposit & Bonds:					51,000,000	76,000,000	604,064	
CASH MANAGEMENT FUNDS:								
<u>Non - Current</u>								
BlackRock Care & Maintenance Fund		UNRATED	UNRATED	2016 (Estimate)	5,955,344	5,531,960	77,455	
Total Cash Management Funds					5,955,344	5,531,960	77,455	
Current					133,853,819	133,020,970		
Non-Current					19,955,344	19,531,960		
TOTAL					153,809,163	152,552,930	741,428	

5.8 End of Financial Year Update on Section 94 Contributions

TRIM REFERENCE: F2004/00552 - D03061625

MANAGER: Martin Johnson, Manager Land Use Planning and Policy Development

AUTHOR: Sandy Rose; Contributions Officer

SUMMARY

This report provides the current status of Council's Section 94 and drainage contributions (excluding water and sewer) for the beginning of July 2011 to the end of June 2012

RECOMMENDATION

That Council receive the report on End of Financial Year Update on Section 94 Contributions.

BACKGROUND

The following table shows the full year to date budgeted Section 94 income per Contribution Plan compared with the full year to date actual income.

Contribution Plan	Section 94		
	Actual Income YTD	Budgeted Income YTD	Variation YTD
Budgewoi**	\$38,071	\$20,000	\$18,071
The Entrance	\$77,264	\$200,000	-\$122,736
Gorokan	\$16,547	\$20,000	-\$3,453
Warnervale*	\$2,028,266	\$1,160,000	\$868,266
Ourimbah	\$26,041	\$40,000	-\$13,959
Southern Lakes	\$65,712	\$100,000	-\$34,288
San Remo	\$8,486	\$140,000	-\$131,514
Toukley	\$34,017	\$40,000	-\$5,983
Wyong	\$199,865	\$200,000	-\$135
Shire Wide	\$75,368	\$40,000	\$35,368
Northern Districts***	\$173,463	\$40,000	\$133,463
Total	\$2,743,100	\$2,000,000	\$743,100

Section 94A income for the financial year was \$195,414.

* This includes \$695,814 (S94 \$582,056 and Drainage \$113,758) contributions from the GP Super Clinic which will be included in the Warnervale Town Centre Plan when adopted.

** This includes 2 dual occupancies approved in the Buff Point area and 4 additional sites for a manufactured home village.

5.8 End of Financial Year Update on Section 94 Contributions (contd)

*** This includes payment of contributions for 2 DA's approved by the Land & Environment court in 2006 for 27 (15 +12) allotments for manufactured housing within a community subdivision.

S94 income received for the last quarter of the year was \$1,405,201. As a result Council exceeded budgeted income for 2011/12 financial year by \$743,100.

Drainage

Contribution Plan	Drainage		
	Actual Income YTD	Budgeted Income YTD	Variation YTD
Budgewoi	\$0	\$0	\$0
The Entrance	\$0	\$0	\$0
Gorokan	\$0	\$0	\$0
Warnervale*	\$588,143	\$480,000	\$108,143
Ourimbah	\$0	\$0	\$0
Southern Lakes	\$19,951	\$77,500	-\$57,549
San Remo	\$11	\$0	\$11
Toukley	\$0	\$0	\$0
Wyong	\$17,832	\$13,500	\$4,332
Shire Wide	\$0	\$0	\$0
Northern Districts	\$0	\$0	\$0
Total	\$625,937	\$571,000	\$54,937

The total projected S94 income for 2011/12 was \$2,571,000 (including drainage). Projected income was based upon forecasting development activity and the review of previous year actual income received.

Drainage income exceeded budgeted income by \$54,937.

Unfunded Liabilities

In accordance with an outcome of the Councillor workshop held 10-11 February 2012, a strategy is currently being developed to manage current and potential future unfunded liabilities. A report and a draft strategy will be presented to a future Ordinary meeting for Council's consideration.

ATTACHMENTS

Nil.

5.9 Proposed Works on Private Land at Bruce Crescent, Wallarah

TRIM REFERENCE: F2011/01739 - D03085136

AUTHOR/ MANAGER: David Ryan; Manager Estuary Management

SUMMARY

Reporting on the results of negotiations with the landowner of No 380 Bruce Crescent, Wallarah in response to Council's resolution of 13 June 2012. The landowner was unwilling to accept the terms of Council's resolution in respect of the implementation of a design which would achieve the objections of the Estuary Management Plan (EMP) or the Australia Caring for our Country targets. Therefore, no further action is proposed to be taken.

RECOMMENDATION

That Council receive the report on Proposed Works on Private Land at Wallarah.

BACKGROUND

At the Ordinary meeting of Council on 13 June 2012 Council resolved unanimously:

- "1 That Council delegate to the General Manager the authority to negotiate with the landowner an agreement on an appropriate design that achieves the objectives of the Estuary Management Plan in respect of the Caring for Our Country Parameters and respects the objectives of the landowner.*
- 2 That Council receive a report on the outcome of the negotiations.*

FOR: COUNCILLORS BEST, EATON, GRAHAM, MATTHEWS, MCBRIDE, MCNAMARA,
SYMINGTON, VINCENT, WEBSTER AND WYNN

AGAINST: NIL"

CURRENT STATUS

Senior Council Staff have had a number of discussions and subsequently met with the landholder on site 16 July 2012. Staff outlined the requirements for a project to be considered within the Caring for Our Country program of works for streambank rehabilitation and the implications for the landholder of such a project.

The criteria discussed on site and confirmed by email to the landholder on 23 July 2012 included the following design components and landholder obligations:

- 1 Near vertical rock walls would be constructed only around the culvert headwalls, these would then transition into the use of rough rock facing on the embankment which would be battered back to minimum 1 in 1.5 gradient.

5.9 Proposed Works on Private Land at Bruce Crescent, Wallarah (contd)

- 2 Rock lining protecting the streambank would be provided for approximately 15 metres from the culvert outlet.
- 3 Over-steep bank areas downstream of the rock protection would be battered back, protected using jute matting and planted out to provide vegetated bank protection.
- 4 Fencing would be required to be installed on both sides of the stream bank at a minimum of 3 metres back from the top of bank area. Fencing would need to continue along the full length of the creek on the property to protect riparian areas on the remainder of the stream bank.
- 5 Provision for a controlled stock crossing could be made however this would require stock to be moved from one side of the creek to the other under control to ensure they do not move into riparian vegetation.
- 6 Off stream watering, if required, would need to be provided by the owner.
- 7 The owner would be responsible for long term maintenance of both the vegetation and the fencing provided.

The landholder has communicated their refusal of the above design method and landholder obligations at the site meeting of 16 July 2012 formally in writing on 24 July 2012 and during a number of subsequent telephone conversations.

The resident has proposed an alternative design option which meets their objectives, however, these cannot be met by a Caring for Our Country project and no further negotiations will occur to include this project in the Estuary Management program of works.

Council is therefore unable to proceed with the proposed EM project as outlined above. Any alternative form of works cannot be funded under the EM program as it would not meet the Caring for our Country Grant conditions. It is therefore recommended that no further action be taken.

ATTACHMENTS

- | | | |
|---|------------------------------------|-----------|
| 1 | Plan of Proposed Works (A4 colour) | D03095150 |
| 2 | Letter from landowner | D03102383 |



AUSIMAGE © 2011 Council of Knight Merit Pty Ltd
 Department of Finance and Services 2012

Wyong Shire Council 2012

10/08/2012 nadixon

Wyong Shire Council ABN 47 054 613 735
 DX 7306, PO Box 20, Wyong, NSW, Australia 2259
 Ph: (02) 43 50 5555 Fax: (02) 4351 2098

Web: www.wyong.nsw.gov.au
 Email: wcsc@wyong.nsw.gov.au



MAP EXTRACT

Scale 1:1800

Note: Data is not survey accurate.
 Scale is representation only.

Projection: Transverse Mercator
 Projected Co-Ordinate System: GDA_1994_MGA_Zoned6
 Geographic Co-Ordinate System: GCS_GDA_1994

© Wyong Shire Council 2012
 © Department of Finance and Services 2012

Disclaimer

Base Cadastre is part of the Digital Cadastrial Database supplied by the NSW Land and Property Management Information, (LPMI), a division of the Department of Finance and Services. Any person whose legal rights may be affected, or intends to act on any cadastrial information shown on this plan should verify such information by consulting the LPMI before so acting.

Michael Whittaker
 General Manager



Hello Andrew,

Firstly thank you for this email, nothing has changed, we do not agree with Angela from EMP to fence off our whole creek thru the middle of our acerage, this was explained to you and Angela several months ago.

We meaning 370 & 380 Bruce Crescent have always explained to you and Greg MacDonald that we agree with the original design from Peter Sheath back in 2010. So yes we agree with you in the below email OPTION 2 to submit to us a new SIMILAR design to the one submitted by Peter Sheath.

Now that the blackberry has been 90-95% cleared in that corner you can see how bad the COUNCIL STRIP is and as I informed you there are several holes and dangerous to the public and that it is more than wide enough to get a car thru with our neighbours blessing to take out their corner fence post.

So now what Andrew? Do I have to go thru all this councillor voting again? You told me I was in the budget under BRUCE Crescent, TRUE? So what is met through Councils revenue funding mean?

Thank you and I really hope this gets on its way to being completed as promised by so many staff members.

Kylie Albanese

From: Pearce, Andrew [mailto:PEARCEA@wyong.nsw.gov.au]
Sent: Monday, 23 July 2012 5:13 PM
To: 'smileykylies@bigpond.com'
Cc: Matthews, Josette
Subject: 370 & 380 Bruce Crescent

Dear Kylie;

I refer to the Council resolution of 13 June 2012 and subsequent discussions and onsite meetings with staff.

At the Ordinary meeting of Council on June 13, 2012 Council resolved unanimously:

- 1 *That Council delegate to the General Manager the authority to negotiate with the landowner an agreement on an appropriate design that achieves the objectives of the Estuary Management Plan in respect of the Caring for Our Country Parameters and respects the objectives of the landowner.*
- 2 *That Council receive a report on the outcome of the negotiations.*

In recent years Council has been undertaking a number of stream bank rehabilitation projects under the terms of the Federal Governments caring for Our Country (CFOC) criteria. These works have been completed on both public and private land. The CFOC focus is on environmental improvement projects. Whilst rock lining and rock walls form part of the stabilisation works on some projects we have previously constructed, these have to be in conjunction with environmental improvement and stream bank protection throughout the property.

I confirm the advice from Council's Estuary Management Unit provided at the 16 July 2012 meeting that for the Bruce Crescent proposal to be consistent with the CFOC criteria then the following items would need to be agreed to as part of the works:

- 1) Near vertical rock walls would be constructed only around the culvert headwalls, these would then transition into the use of rough rock facing on the embankment which would be battered back to minimum 1 in 1.5 gradient.
- 2) Rock rip rap would be provided for approximately 15 metres from the culvert outlet.
- 3) Over-steep bank areas downstream of the rock protection would be battered back, protected using jute matting and planted out to provide vegetated bank protection.
- 4) Fencing would be required to be installed on both sides of the stream bank at a minimum of 3 metres back from the top of bank area. Fencing would need to continue along the full length of the creek on the property to protect riparian areas on the remainder of the stream bank.
- 5) Provision for a controlled stock crossing could be made however this would require stock to be moved from one side of the creek to the other under control to ensure they do not move into riparian vegetation.
- 6) Off stream watering, if required, would need to be provided by the owner.
- 7) The owner would be responsible for long term maintenance of both the vegetation and the fencing provided.

At the site meeting of 16 July 2012 you communicated your non acceptance to this scope of works. In particular there was no commitment towards the primary CFOC parameters of a landholder committing to the protection of the stream bank throughout their property, i.e. additional to the 'hot spot' areas where engineering works are completed, through such means as appropriate native plantings of the stream bank and the fencing off from stock (which would be at no upfront cost to the landowner).

Whilst onsite we then discussed an alternative option which involved the undertaking of limited stream bank works in the vicinity of the culvert outlet. These works would not be eligible for Estuary Management Plan funding or be undertaken as part of that program, but rather would need to be met through Councils revenue funding.

Such works could incorporate the construction of a hard engineering solution comprising of ~10-15m of stacked rock similar to the design submitted for comment previously. Whilst these works would protect the bank immediately at the culvert outlet, they are considered likely to lead to increased erosion downstream and in the vicinity of the bridge abutments. Reconstruction and protection of the existing bridge or relocation to an alternative access point would remain the responsibility of the landowner.

To progress this matter you are requested to confirm in writing:

- 1) Your position with respect to a solution consistent with the CFOC parameters as outlined above.
- 2) Based upon our onsite discussions, a scope of works as closely aligned with the CFOC parameters as possible, for which you would be in agreement.

Based upon this information a further report will be required to go to Council in accord with item 2 of the resolution above.

Yours faithfully

Andrew Pearce

Manager

Roads and Stormwater

Wyang Shire Council

P.O. Box 20, WYONG NSW 2259

Tel: 02 4350 5451 Fax: 02 4351 2098

E-mail: Andrew.Pearce@wyong.nsw.gov.au

WWW: <http://www.wyong.nsw.gov.au/>

5.10 Results of Water Quality Testing for Beaches and Lake Swimming Locations

TRIM REFERENCE: F2004/06822 - D03087742

MANAGER: Rob Van Hese, Manager Regulation and Compliance

AUTHOR: Jon Scorgie, Senior Environmental Health Officer

SUMMARY

Reporting on the results of bacteriological tests for primary recreation water quality for the beaches in Wyong Shire and lake swimming sites in the Tuggerah Lakes catchment for the month of July 2012.

RECOMMENDATION

That Council receive the report on Results of Water Quality Testing for Beaches and Lake Swimming Locations.

Primary Recreation Water Quality Monitoring Program

Wyong Shire beaches are regularly monitored for swimming safety in accordance with the latest National Health and Medical Research Council (*NHMRC Guidelines for Managing Risks in Recreational Water (2008)*). These guidelines have superseded NHMRC (1991), however, they still allow for beaches to be awarded a star rating based upon the potential for sewage and stormwater contamination. These star ratings are awarded as detailed in the Table 1 below.

Wyong Shire Council has been in partnership with the Office of Environment and Heritage (OEH) in implementing the "Beachwatch" program during the bathing season of summer, October through to April. During summer weekly samples are taken.

Council is currently in the Winter season for sampling, May through to September. Although the OEH Beachwatch program becomes inactive during the winter season, Council continues to sample once a month to assess any changes in water quality.

If results indicate high levels of sewage and stormwater contamination, further investigations are triggered to determine the source of its origin. Council have continued to apply Beachwatch's acceptable indicator levels for faecal contamination "enterococci" of 200cfu/100ml and apply our results to their star rating, see Table 1 below.

Additionally, Council is still required to monitor the ocean outfalls five times a month, year round. This monitoring and sampling regime is undertaken in accordance with the OEH "Environmental Protection License's", this sampling is carried out at ten sites around Norah Head and Wonga Point.

5.10 Results of Water Quality Testing for Beaches and Lake Swimming Locations (contd)

Council also monitors by way of water quality testing, lake locations that are not designated swimming locations to detect changes in water quality. The results of such testing are submitted to the Estuary Management Unit.

As a part of the National Health and Medical Research Council - Guidelines for Managing Risks in Recreational Water 2008 (NHMRC 2008), OEH’s Beachwatch program required that all sites be re-evaluated to identify their potential pollution sources and the risk that they may pose to human health. Any potential pollution sources identified in the re-evaluation lead to management strategies being developed for each site so that risk to human health can be minimised. Advisory signs have been erected at all lake sampling sites advising “This area can be affected by Stormwater Pollution for up to 3 Days after heavy rain. Swimming during this period in NOT Recommended”. The signs have been erected to advise the public that there is a potential for poor water quality at the site due to the stormwater inundation after heavy rain. It does not mean that the water quality is poor at all times.

Summary of results for July 2012 (Winter Program)

For the month of July all ocean and lake beach sites achieved a star rating that is defined as being safe for swimming under the NHMRC 2008 for all samples taken.

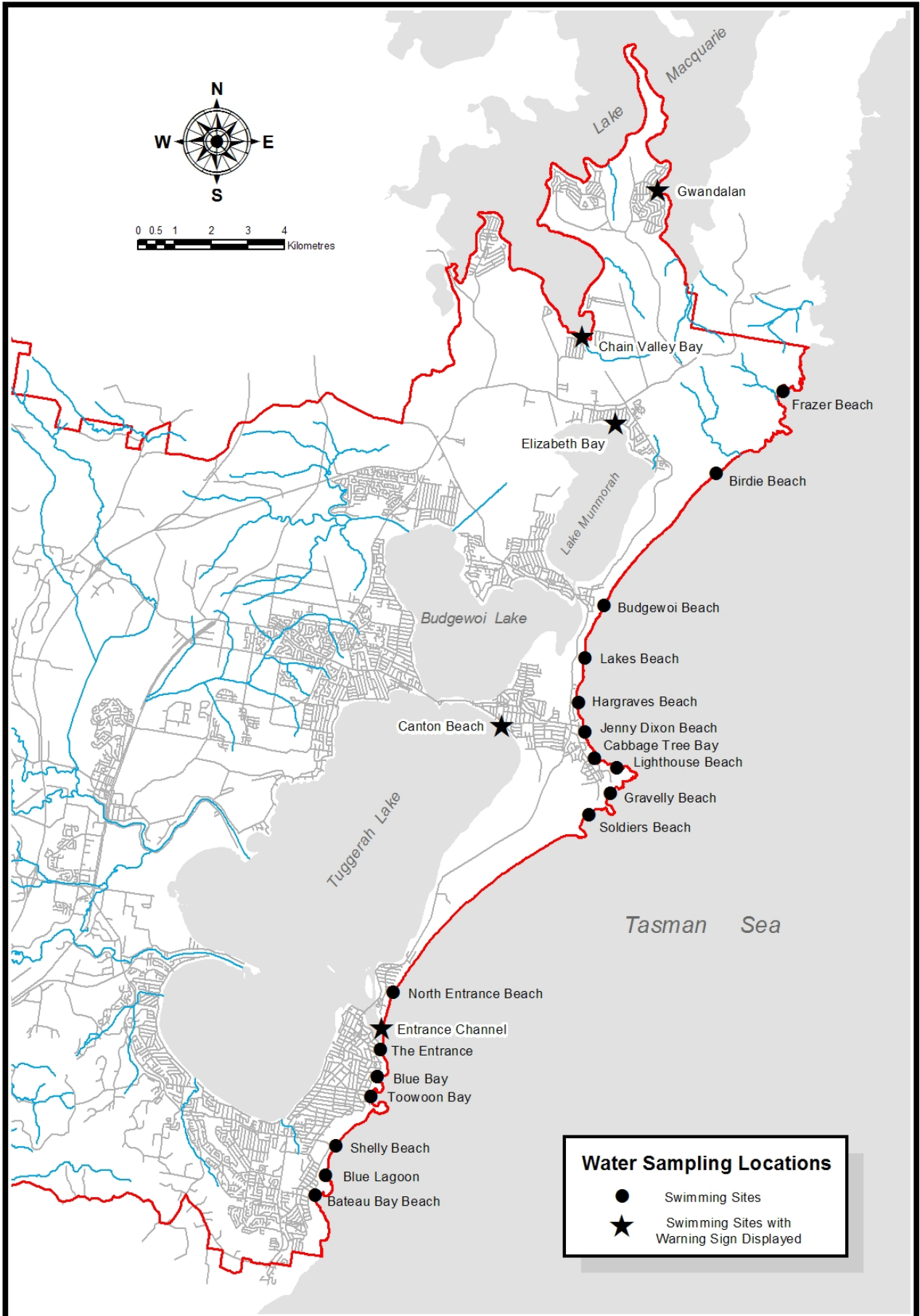
A definition of the star rating system can be seen in Table 1 below.

Table 1: NHMRC Star Rating Interpretation

Star Rating		Enterococci (cfu/100mL)	Interpretation
****	Good	≤ 40	NHMRC indicates site suitable for swimming
***	Fair	41 – 200	NHMRC indicates site is suitable for swimming
**	Poor	201- 500	NHMRC indicates swimming at site is not recommended.
*	Bad	>500	NHMRC indicates swimming at site is not recommended.

ATTACHMENTS

- 1 Water Sampling Locations D02345961



5.11 Activities of the Development Assessment and Building Certification and Health Units

TRIM REFERENCE: F2004/07830 - D03088293

MANAGER: Gina Vereker; Director

AUTHOR: Jane Doyle; Senior Administration Support Officer

SUMMARY

The report includes information and statistics regarding the operations of the Development Assessment Unit and the Building Certification and Health Unit which covers the submission and determination of development, construction and subdivision applications for the month of July 2012.

RECOMMENDATION

That Council receive the report on Activities of the Development Assessment and Building Certification and Health Units

Development Applications Received and Determined – Development Assessment Unit

Type:	Number Received:	Estimated Value \$:	Number Determined:	Estimated Value \$:
Commercial	11	3,517,819	14	1,635,200
Industrial	1	300,000	3	648,971
Residential – Dwellings, (Multiple Dwellings/Dual Occupancy)	3	782,110	6	2,477,699
Other Applications	3	3,000	3	495,000
Section 96 Applications	7	-	3	-
Total	25	4,602,929	29	5,256,870

Note: *Included in the number of development applications lodged in the “Commercial” Category was an application for a Commercial premises & education establishment (Contour College), carpark and signage at Tuggerah valued at \$2.5M.*

Development Applications Received and Determined – Building Certification and Health Unit

Type:	Number Received:	Estimated Value \$:	Number Determined:	Estimated Value \$:
Commercial	1	130,000	3	290,000
Industrial	-	-	-	-
Residential (Dwellings)	16	3,669,770	29	5,436,495
Residential – Multiple Dwellings, (Alterations and Additions)	49	2,700,529	31	1,580,512
Other Applications	-	-	-	-
Section 96 Applications	5	-	5	-
Total	71	6,500,299	68	7,307,007

Subdivision Applications Received and Determined – Development Assessment Unit

Type:	Number Received:	Number of Lots:	Number Determined:	Number of Lots:
Commercial	-	-	-	-
Industrial	-	-	-	-
Residential	2	3	3	3
Rural	-	-	1	1
Total	2	3	4	4

Net Median Turn-around Time

The net median turn-around time in working days for development applications determined during the month was **11** days. This figure now includes tree applications determined within the Development Assessment Unit. As of the new financial year, all Tree Applications will be reported as they are a development application and have previously been reported separately.

There was **1** priority development application determined during the month which took **31** days. This application was for a warehouse and transport depot at Berkeley Vale.

Other Approvals and Certificates

Type:	Number Determined:
Trees	41
Section 149 D Certificates (<i>Building Certificates</i>)	9
Construction Certificates	70
Complying Development Certificates	13

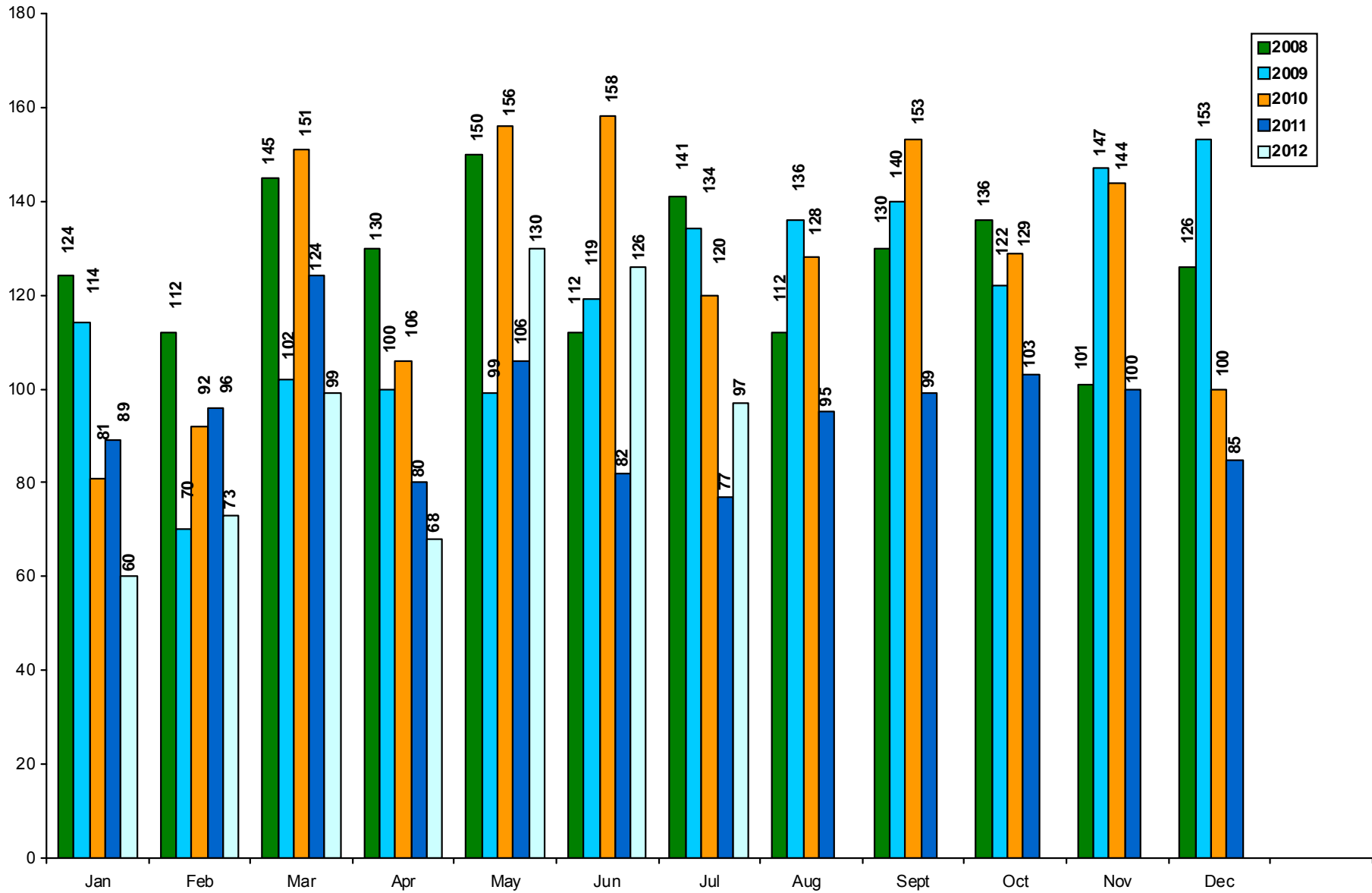
State Environmental Planning Policy No 1

There were no applications that relied on a SEPP 1 variation for the month of July.

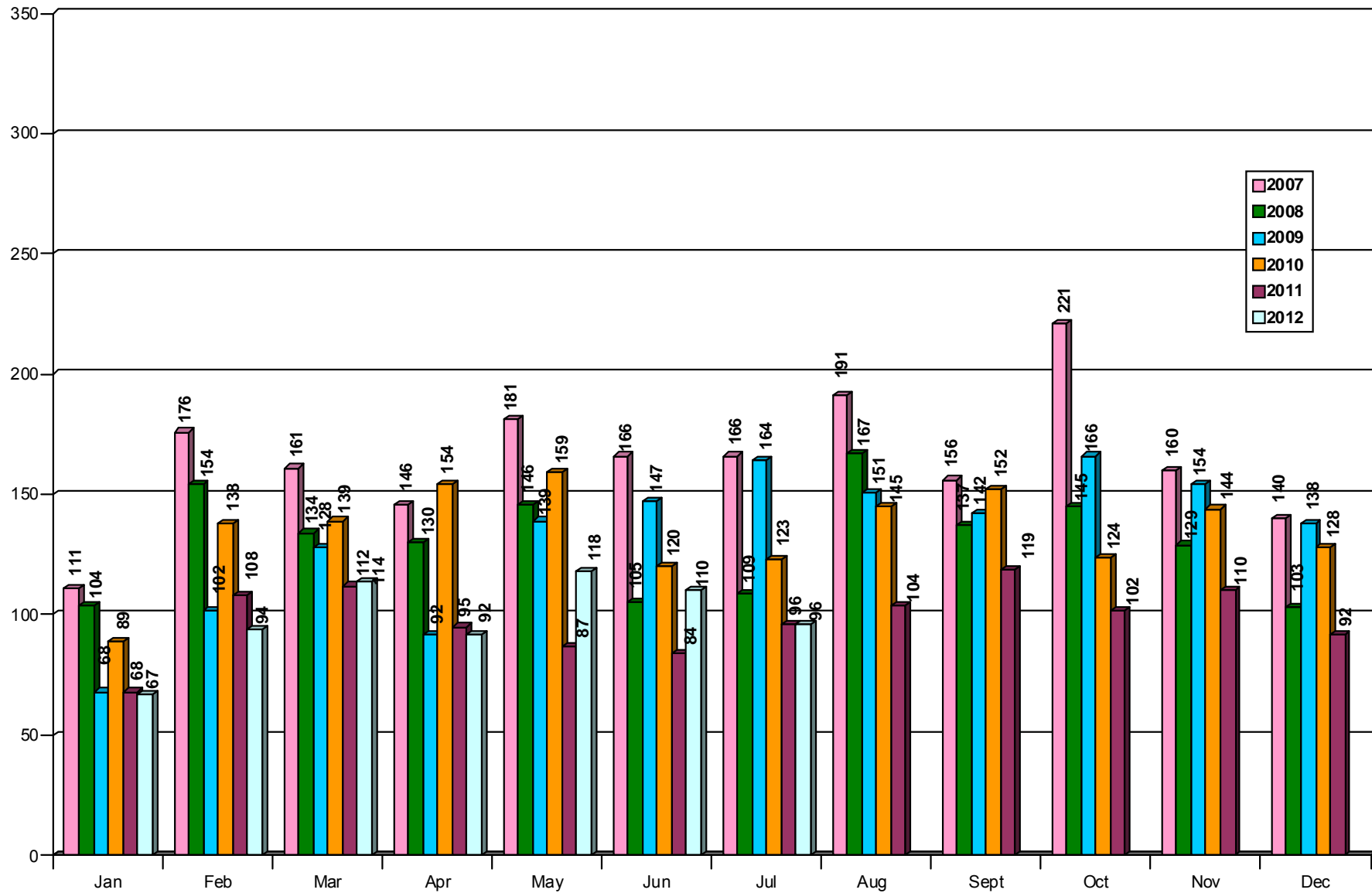
ATTACHMENTS

- | | | |
|----------|---|-----------|
| 1 | Graphs - Development Applications Lodged, Determined and Construction Certificates Determined (A4 Colour) | D03089610 |
|----------|---|-----------|

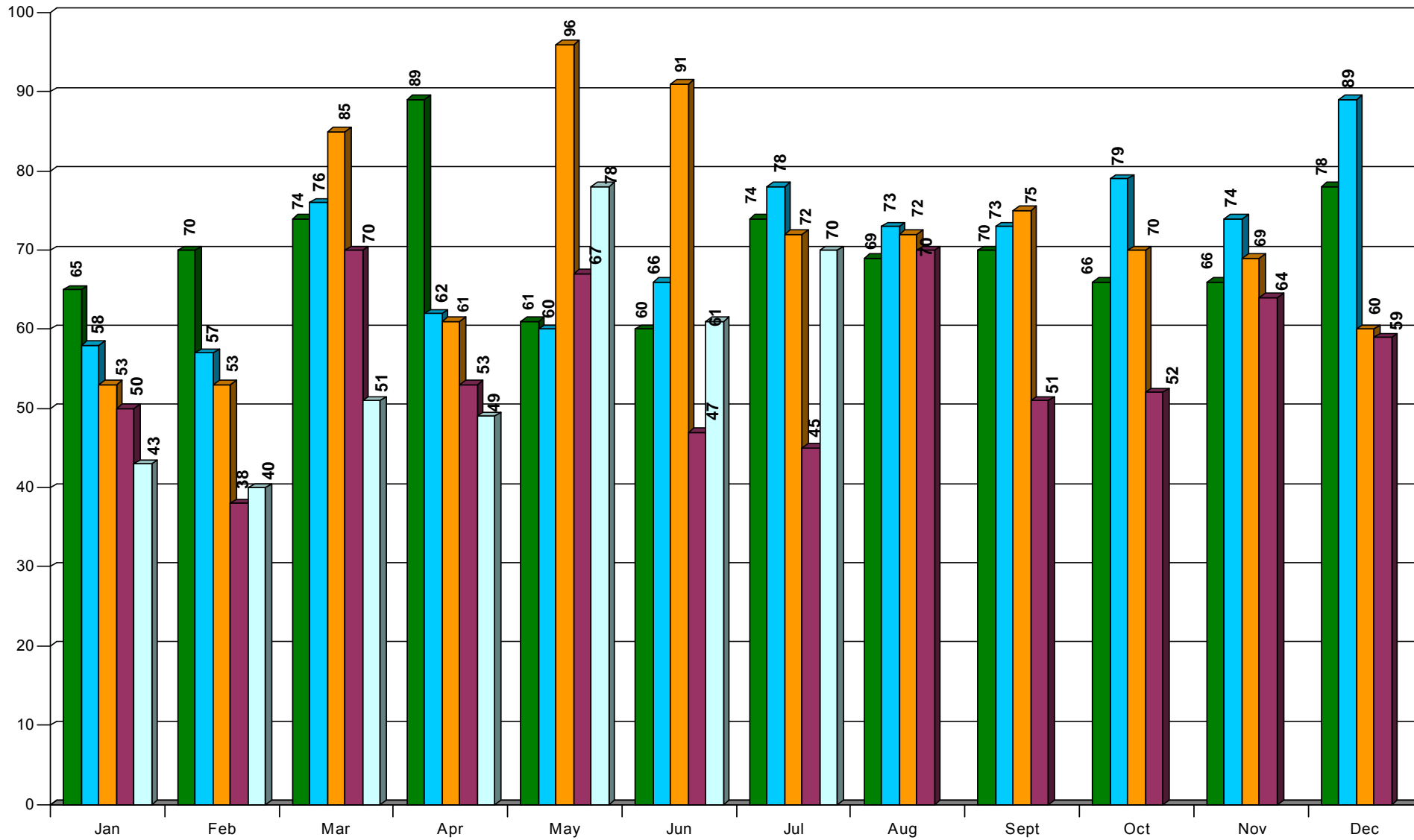
DAs DETERMINED



DAs LODGED



CCs DETERMINED



5.12 Wildlife Road Kill

TRIM REFERENCE: F2004/06946 - D03088656

MANAGER: Lyn Littlefield, Team Coordinator

AUTHOR: Jane Doyle; Senior Administration Support Officer

SUMMARY

Reporting on a response from the Hon. Duncan Gay MLC, Deputy Leader of Government in the Legislative Council, Minister for Roads and Ports in regard to wildlife crossings across major road networks on the Central Coast.

RECOMMENDATION

That Council receive the report on Wildlife Road Kill.

BACKGROUND

Council at its meeting held on 14 December 2011;

“RESOLVED unanimously on the motion of Councillor Best and seconded by Councillor Wynn:

- 1 That Council note that its planned east-west major wildlife corridor is now being formalised.*
- 2 That Council confirm that it seeks to provide safe aerial and terrestrial passage through the corridor by addressing safety in the 2 major road networks (the F3 and the Pacific Highway) that cut through the corridor causing major wild life road kill issues.*
- 3 That Council seek assistance from the NSW RTA and the Federal Government to address the issue of safer wild life corridor crossings as seen on the NSW mid north coast.*
- 4 That Council receive a report on the outcomes with regard to the request for assistance from the NSW RTA and the Federal Government.*

FOR: COUNCILLORS BEST, EATON, GRAHAM, MATTHEWS, MCBRIDE, MCNAMARA, SYMINGTON, VINCENT, WEBSTER AND WYNN

AGAINST: NIL

A response has now been received from the Hon. Duncan Gay MLC, Deputy Leader of Government in the Legislative Council, Minister for Roads and Ports in regard to wildlife crossings across major road networks on the Central Coast.

ATTACHMENTS

- 1 Response from the Hon. Duncan Gay MLC dated 30-7-2012 D03088051



The Hon. Duncan Gay MLC
Deputy Leader of Government in the Legislative Council
Minister for Roads and Ports

M12/3951

Mr Michael Whittaker
General Manager
Wyong Shire Council
PO Box 20
WYONG NSW 2259

Dear Mr Whittaker

Thank you for your letter to the Federal Minister for Infrastructure and Transport, which was referred to me, about providing safer wildlife crossings across major road networks on the Central Coast.

As you are aware, on 1 November 2011 a new organisation called Roads and Maritime Services (RMS) replaced the Roads and Traffic Authority and NSW Maritime. RMS will focus on service delivery, concentrating on delivering the key tasks of building and maintaining road infrastructure and the day-to-day compliance and safety for roads and waterways.

RMS considers the need for wildlife passage in all new road projects, including aerial and terrestrial mitigation structures where possible. I am advised that planning for road upgrades within the council's area such as Sparkes Road, Warnervale and the Central Coast Highway will include such measures in the road design. The information prepared by the council on fauna movement corridors within the region will be very helpful for this purpose.

Retrofitting such measures to existing heavily trafficked roads, such as the F3, will be difficult and expensive and must be based on a demonstrated conservation or safety need. RMS will be happy to work with the council to identify priority areas for investigating the possibility of constructing or enhancing wildlife crossing measures on major roads in the council's area.

I hope this has been of assistance. For more information please contact Mr Kevin Roberts, Senior Environmental Specialist, at RMS on (02) 8588 5745.

Yours sincerely

Duncan Gay MLC 30-7-12
Deputy Leader of Government in the Legislative Council
Minister for Roads and Ports

cc: Darren Webber MP, Chris Spence SNP

5.13 Outstanding Questions on Notice and Notices of Motion

TRIM REFERENCE: F2012/00026 - D03087729

MANAGER: Lesley Crawley, Manager Corporate Governance

AUTHOR: Monica Redmond; Councillor Services Officer

SUMMARY

Report on outstanding Questions on Notice and Notices of Motion.

RECOMMENDATION

That Council receive the report on Outstanding Questions on Notice and Notices of Motion.

ATTACHMENTS

- 1 Table of Outstanding Questions on Notice and Notices of Motion - 22 August 2012

Enclosure D03087985

22 August 2012

To the Ordinary Council Meeting

Corporate Services Department

6.1 Answers to Question on Notice

TRIM REFERENCE: F2012/01215 - D03092021

MANAGER: David Jack; Director Corporate Services

AUTHOR: Donna Andrews; PA to Director Corporate Services

6.1 Q28/12 Fairness Test

The following question was asked by Councillor Best at the Ordinary Meeting on 25 July 2012:

"I have received numerous representations from Mr Harris of Budgewoi advising that Council has rejected his claim for repairs to his vehicle as a result of a Council tree on Council land falling upon his vehicle. Personally I find it difficult to understand our position, as if this occurred through a shop awning failure or signage collapse damaging a parked vehicle the shop owner would be responsible. I table Mr Harris's correspondence of 25 July 2012 for your response?."

Mr Harris has made a number of written communications to Council via various channels prior to his letter of 25 July 2012. The most recent was to enlist the help of Ms Jill Hall MP, Federal Member for Shortland in order to persuade Council to accept his claim.

The reply to Ms Hall (July 17th) was copied to Mr Harris, Cr Best and Cr Vincent.

Council staff have empathized with Mr Harris's predicament however the legal position concerning 3rd party damage resulting from activities/events on public road property are covered specifically by the Roads Act and the Civil Liabilities Act.

Mr Harris has been advised to take the matter up with his insurance company.

ATTACHMENTS

Nil.

22 August 2012

To the Ordinary Council Meeting

Councillor

7.1 Notice of Motion - Insurance Risk Briefing

TRIM REFERENCE: F2004/07706 - D03094535

AUTHORS: Councillor G Best and Councillor D Eaton

Councillors Best and Eaton have given notice that at the Ordinary Council Meeting to be held on 22 August 2012 they will move the following Motion:

- “1 *That Council request the General Manager to arrange a briefing for the incoming Council on the wider community issues resulting from pressures on the insurance sector.*
- 2 *That Council request the General Manager to ensure the briefing includes coverage of the potential major insurance trends and the risks that will need to be addressed by residents and employers in the Shire.*
- 3 *That Council request the briefing to be held after the induction of the new Council.”*

RESOURCES

The briefing will be arranged by the Corporate Services Department.

22 August 2012

To the Ordinary Council Meeting

Councillor

7.2 Notice of Motion - Disability Friendly Miniature Railway in the North of the Wyong Shire

TRIM REFERENCE: F2004/07706 - D03101671

AUTHOR: Doug Vincent; Councillor

Councillor Doug Vincent has given notice that at the Ordinary Council Meeting to be held on 22 August 2012 he will move the following Motion:

- "1 That Council support the Northern Lakes Disability Tourism Precinct Committee in their endeavours to establish a disability friendly miniature railway system in the north of the Wyong Shire.*
- 2 That Council investigate possible locations for installing disability friendly miniature railway system in the north of the Shire in consultation and conjunction with the Northern Lakes Disability Tourism Precinct Committee and the Pioneer Dairy Model Railway Group. .*
- 3 That Council prepare a report detailing feasible sites in the north of the Shire for a disability friendly miniature railway system."*

RESOURCES

The implementation of this NOM will require a cross departmental approach. The investigation envisaged in Recommendation No 2 may involve considerable staff time if all possible sites within the northern part of the Shire are to be identified, investigated and presented to Council for consideration. The owners of relevant sites would also need to be consulted. Noting that consultation is also required with the Northern Lakes Disability Tourism Precinct Committee and the Pioneer Dairy Model Railway Group, this investigation would fall into unprogrammed work which would likely require the equivalent of 1 FTE for approximately 6 weeks.

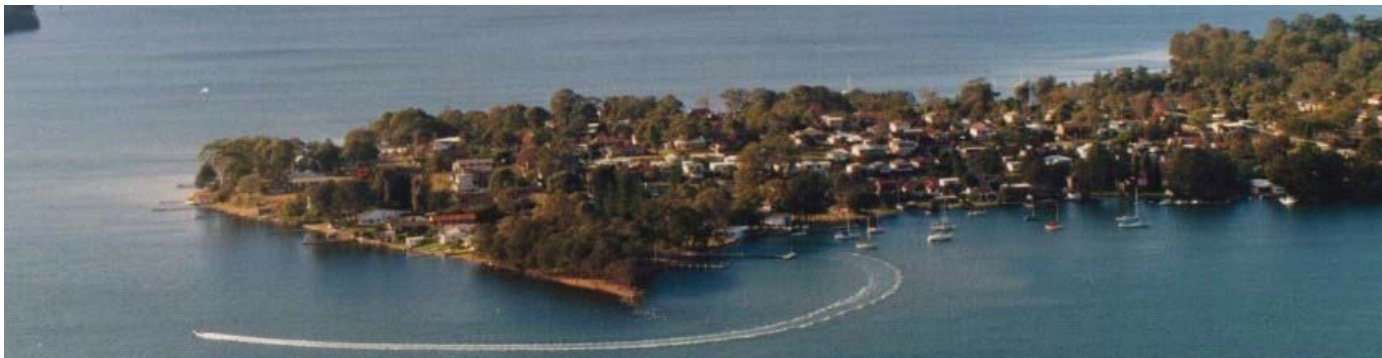
COUNCILLORS NOTE

- The motion seeks to identify the general attitude of the Council for a disability friendly miniature railway system in the north of the Shire.

ATTACHMENTS

- | | | |
|----------|-------------------------------------|-----------|
| 1 | 101116 Model railway support | D03101673 |
| 2 | 110502 Model railway request to WSC | D03101675 |
| 3 | Mayor Wyong Council | D03101677 |

MANNERING PARK COMMUNITY PRECINCT COMMITTEE



**PO Box 7061
MANNERING PARK
NSW 2259**

ABN 47054613735

16th November 2010

The General Manager
Wyong Shire Council
PO Box 20 NSW
2259

RE: PIONEER DAIRY MODEL RAILWAY USE OF RUTTLEYS ROAD LAND

Dear Sir,

Our Precinct has had a number of informal discussions with the Pioneer Dairy Model Railway Club regarding the possible site for their club facilities and track.

The initial discussions involved the use of land at the corner of Ruttleys Road and the Pacific Highway. This land has been used as a dumping ground for various types of fill for many years and we understand the council has plans to push the rubbish into a surrounding burm preventing further dumping, and to revegitate the area.

The model railway have since advised the Precinct that this parcel of land is not sufficient for their requirements and that there are two parcels of land available along Ruttleys Road, to the south of the currently located Central Coast Model Aero Club.

Since the Precinct meeting was held on the 18th October a community member has advised that a number of unique and endangered plant species have been identified on the parcels of land in question beside the model aero club. This may impact on the model railways access to this area.

If for any reason the model railway is not permitted to use either of the parcels of land beside the model aero club then the Precinct would ask that council approach Delta electricity and endeavor to have additional land made available at the Ruttleys Road/Pacific Highway intersection.

The Precinct feels that the provision of a model railway would be a tourist attraction to the area. However as we have no intimate knowledge of its operation, plans, or scope, nor are we aware of the full environmental considerations that may need to be considered we can only offer our in principle support.

Therefore the Precinct would ask that the councilors and staff endeavor to have this project investigated and brought to fruition on a suitable parcel of land to the benefit of the model railway club and the tourism in our area.

Regards



Andrew Whitbourne

Chairperson Mannering Park Precinct Committee

MANNERING PARK COMMUNITY PRECINCT COMMITTEE



**PO Box 7061
MANNERING PARK NSW 2259**

ABN 47054613735

2nd May 2011

General Manager,
Wyong Shire Council,
POP Box 20,
Wyong NSW.
2259

PIONEER DAIRY MODEL RAILWAY ASSOCIATION

Dear Sir,

The Mannering Park Community Precinct has been in discussions for some time now in an attempt to find a suitable location in our area for the establishment of the Pioneer Dairy Model Railway Association's railway site. Your Manager Corporate Governance Lesley Crawley has also been in communication with the Model Railway group and ourselves

The initial discussions came about when Councillor Vincent asked if we knew of any suitable land for the model railway to establish. The Pioneer Dairy Model Railway Association had been in negotiations with the Pioneer Dairy for over three years without any success and had resolved to commence a search for an alternative site. The Precinct had recently been speaking with councillor Andrew Pearce about the restoration of the parcel of land at the intersection of Ruttleys Road and the Pacific Highway. The Precinct felt this site might be ideal for the Association to establish their railway as it is currently only a waste land and would add another tourist attraction to our area.

The Association subsequently resolved that this parcel of land was not large enough for them to install the track and the associated amenities, workshop, parking etc. On further investigation the Association found a parcel of land on the southern side of Mannering Colliery on Ruttleys Road and commenced discussions with council to make this site available. Council has since informed the Association that the land in question is home to some endangered species of plants. The Association felt the endangered species presented a great challenge to continue with the development and recommenced their search for other suitable land.

The Precinct was made aware of the Associations plight and suggested to the Association that the original location at the intersection of Ruttleys Road and The Pacific Highway should be suitable if a portion of the neighbouring Delta land could be utilised. At our April meeting the Precinct agreed to approach Delta to put forward the proposal that they make some of the buffer zone land at the end of Ruttleys Road available to the Model Railway Association. The Precinct subsequently sent correspondence to Delta with the proposal.

As any agreement with Delta needs to be with council, we are seeking councils assistance in negotiating some form of land use agreement with Delta that would allow the Model Railway Association to finally be given a home.

The Precinct would appreciate your advice and assistance in achieving a successful outcome for this voluntary group.

Regards



Andrew Whitbourne

Chairperson MPCPC

Regards



Andrew Whitbourne

Chairperson Mannering Park Precinct Committee

12 Deakin Street
Kurri Kurri
NSW 2327

22 September 2008

Dear Mr Mayor and Councillors

I am writing to you on behalf of the members of a new miniature railway group that has been formed in the Wyong LGA. Over the past several I have been in contact with Mr Stephen Prince discussing the possibility of finding some suitable land in Wyong LGA to establish a miniature railway. I believe that Mr Prince has already spoken to you about this matter having visited the miniature railway at Gosford. Several of our members recently conducted a tour of the local area scouting for suitable sites and we have identified those listed below.

Our basic proposal is to build a miniature railway of three different gauges and to operate once a month for the public. These miniature railways exist all over Australia and are governed by a national body. We will of course provide our own public liability insurance. As has been the case in the past once a piece of land is found the members over time turn the unused land into a public park which simply has a railway running around it. The park is available for use by the general public at all times and the association merely maintains the grounds and infrastructure in return for the use of the land.

Many societies also run a second day each month which are used for members play days but may also be used by various groups through a booking system either for private functions or for fund raising activities. Our association is very supportive of charitable groups and looks forward to a close association with them.

The other two remaining Sundays are used for ground and track maintenance. During the month of December it is a common occurrence to run a Santa special for young and old alike.

As the members already have over 600 metres of track initial construction time would be minimal to first trains running. All monies raised from the operation of the railway are reinvested into the railway enabling a more interesting operation to be established.

As a general guide we will charge \$2 per ride and on a normal operating public day we would expect to move over 1000 people. Our time of operation would generally be from 10AM to 4PM although members would be there considerably longer.

Our primary concerns were toilet facilities (we also need water for the steam locomotives) and parking. The following sites contain these features. We would like to discuss these sites and the proposal in general with you in the near future. Our first preference is Redhill Hilltop Park, Roper Road, Blue Haven. We would be pleased to meet with you to discuss this issue in the

near future as we believe that the establishment of such a facility will only be of benefit to the people of the Wyong Community.

We thank you for your attention to this matter and we look forward to hearing from you soon. Please feel free to contact me on 02 4937 4740 at any time.

Kelly Maybury
Secretary
Pioneer Dairy Steam Railway Inc.