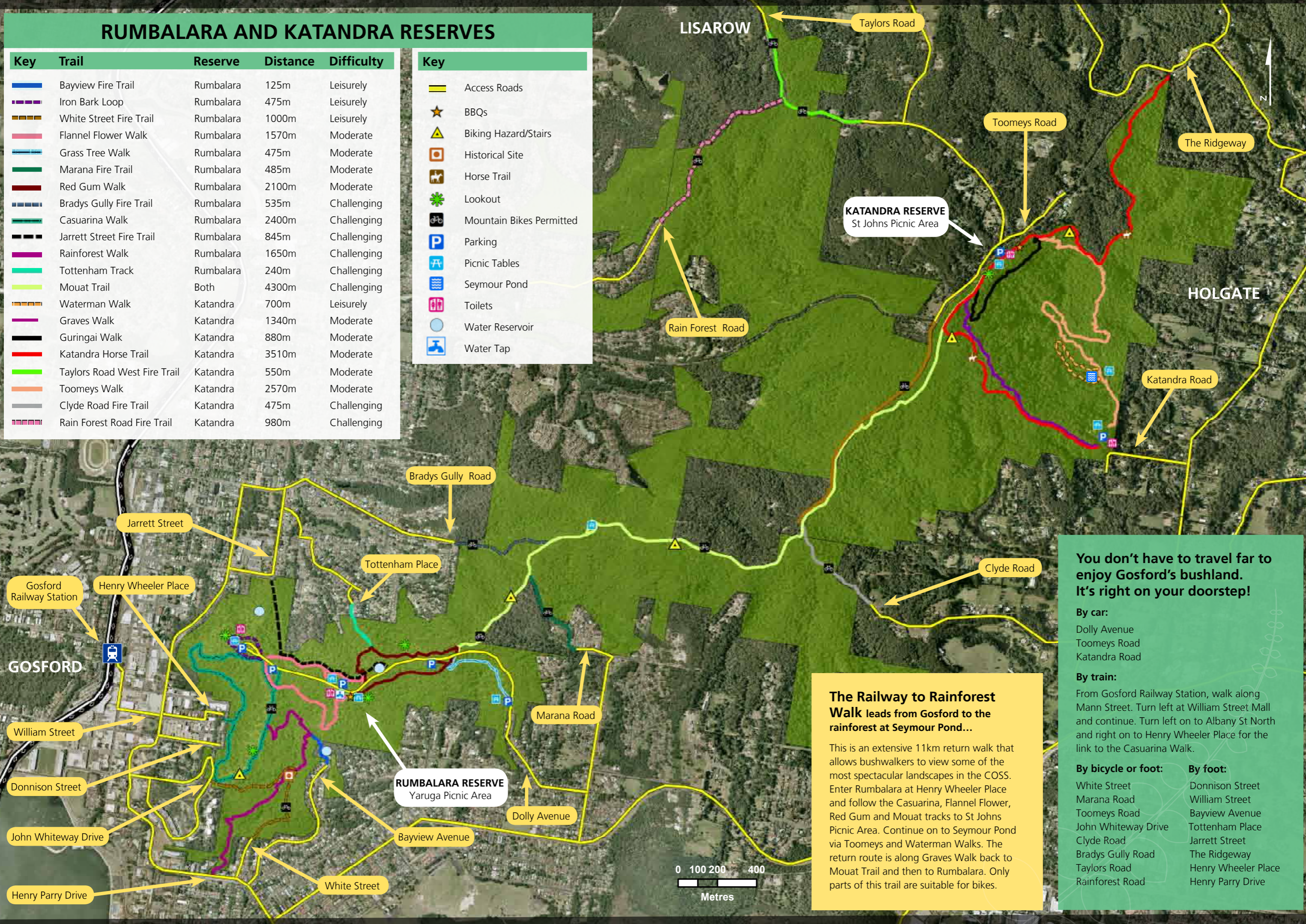


# RUMBALARA AND KATANDRA RESERVES

Key	Trail	Reserve	Distance	Difficulty
	Bayview Fire Trail	Rumbalara	125m	Leisurely
	Iron Bark Loop	Rumbalara	475m	Leisurely
	White Street Fire Trail	Rumbalara	1000m	Leisurely
	Flannel Flower Walk	Rumbalara	1570m	Moderate
	Grass Tree Walk	Rumbalara	475m	Moderate
	Marana Fire Trail	Rumbalara	485m	Moderate
	Red Gum Walk	Rumbalara	2100m	Moderate
	Bradys Gully Fire Trail	Rumbalara	535m	Challenging
	Casuarina Walk	Rumbalara	2400m	Challenging
	Jarrett Street Fire Trail	Rumbalara	845m	Challenging
	Rainforest Walk	Rumbalara	1650m	Challenging
	Tottenham Track	Rumbalara	240m	Challenging
	Mouat Trail	Both	4300m	Challenging
	Waterman Walk	Katandra	700m	Leisurely
	Graves Walk	Katandra	1340m	Moderate
	Guringai Walk	Katandra	880m	Moderate
	Katandra Horse Trail	Katandra	3510m	Moderate
	Taylor's Road West Fire Trail	Katandra	550m	Moderate
	Toomeys Walk	Katandra	2570m	Moderate
	Clyde Road Fire Trail	Katandra	475m	Challenging
	Rain Forest Road Fire Trail	Katandra	980m	Challenging

Key	Feature
	Access Roads
	BBQs
	Biking Hazard/Stairs
	Historical Site
	Horse Trail
	Lookout
	Mountain Bikes Permitted
	Parking
	Picnic Tables
	Seymour Pond
	Toilets
	Water Reservoir
	Water Tap



**The Railway to Rainforest Walk leads from Gosford to the rainforest at Seymour Pond...**

This is an extensive 11km return walk that allows bushwalkers to view some of the most spectacular landscapes in the COSS. Enter Rumbalara at Henry Wheeler Place and follow the Casuarina, Flannel Flower, Red Gum and Mouat tracks to St Johns Picnic Area. Continue on to Seymour Pond via Toomeys and Waterman Walks. The return route is along Graves Walk back to Mouat Trail and then to Rumbalara. Only parts of this trail are suitable for bikes.

**You don't have to travel far to enjoy Gosford's bushland. It's right on your doorstep!**

**By car:**  
 Dolly Avenue  
 Toomeys Road  
 Katandra Road

**By train:**  
 From Gosford Railway Station, walk along Mann Street. Turn left at William Street Mall and continue. Turn left on to Albany St North and right on to Henry Wheeler Place for the link to the Casuarina Walk.

**By bicycle or foot:**

White Street	Donnison Street
Marana Road	William Street
Toomeys Road	Bayview Avenue
John Whiteway Drive	Tottenham Place
Clyde Road	Jarrett Street
Bradys Gully Road	The Ridgeway
Taylor's Road	Henry Wheeler Place
Rainforest Road	Henry Parry Drive

